



Hose End Assembly Tool Set (4AN,6AN,8AN,10AN,12AN)

PART NUMBER: 60-58368

OPERATION INSTRUCTIONS

This Hose End Tool Set is designed to help install a hose end socket onto a hose. If you need any assistance during use or if you have questions about this process, call our Tech Help Line at (254) 848-4300.

Tools Included with Kit:

- 4AN, 6AN, 8AN, 10AN, 12AN Socket Clamp Guides
- 1 - Jig Holder
- Padded hard shell carrying case

Tips:

- Compatible with all Flo Supply Hose Ends that fall within the designated size range.
- When cutting your hose make sure to include the length of the hose end to your overall hose length.
- Give yourself a bit of extra hose to work with to ensure there is no tension on the hose end.
- Make sure that none of the hose casing material is hanging out from the hose end. If this happens remove the hose and reseal it within the hose end. This could be a sign that the hose is not assembled properly and could pose a safety risk.



- Determine the correct length of your hose and mark the location for your cut.



- Using a low residue tape wrap the area of the hose that you want to cut and then mark your cut length on the tape.



Stainless Braided Hose (60-58201 & 60-58201-BLK)

- Once you have a clear mark on the tape, secure the hose in vise jaws (60-58364, 60-58365) or anywhere that you can safely use a fine toothed hacksaw or angle grinder's cutoff wheel.

NOTE: A clean cut will make the remaining steps go much more smoothly, so take your time to make a clean cut.

IMPORTANT: All appropriate safety equipment (gloves, tools etc.) must be used during the installation of this product(s).

Nitro Dave's LLC accepts NO responsibility for injuries or damages resulting during and/or from the installation of any product(s). All products are intended for off-road use only.

WWW.FLOSUPPLY.COM/PAGES/INSTALLATION-GUIDES



Hose End Assembly Tool Set (4AN,6AN,8AN,10AN,12AN)

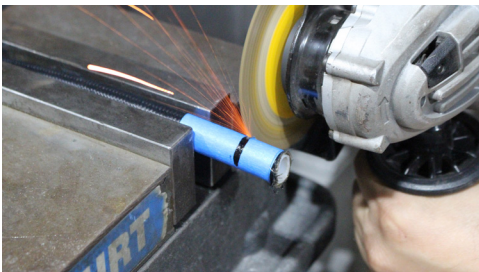
PART NUMBER: 60-58368

OPERATION INSTRUCTIONS



Nylon Covered Stainless Braided Hose (60-58202-BLK)

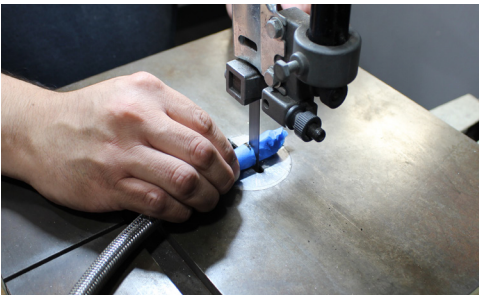
- Use a Hose Cutting Tool to cut in the desired location.



Stainless Braided PTFE Hose (60-58201 & 60-58201-BLK)

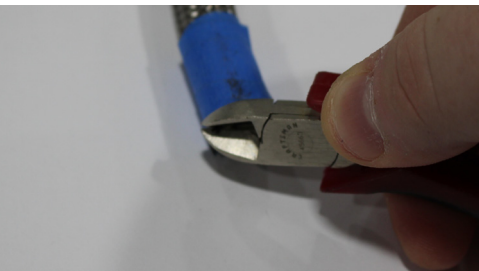
- Once you have a clear mark on the tape, secure the hose in vise jaws (60-58364, 60-58365) or anywhere that you can safely use an angle grinder or die grinder with a thin cutoff wheel.

NOTE: A fine tooth hacksaw can be used but extra fraying requiring extra cleanup may be required. A clean cut will make the remaining steps go much more smoothly, so take your time to make a clean cut.



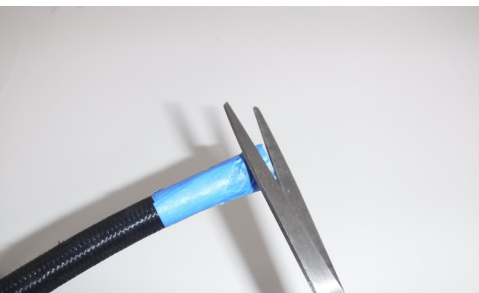
Nylon Covered Stainless Braided PTFE Hose (60-58202-BLK)

- Use a Hose Cutting Tool to cut in the desired location.



Stainless Braided Hose

- Use wire cutters to trim any frayed stainless steel exterior of the hose so that the hose can easily slide into the hose socket.



Nylon Covered Stainless Braided Hose

- Use scissors to trim any frayed nylon on the exterior of the hose so that the hose can easily slide into the hose socket.

IMPORTANT: All appropriate safety equipment (gloves, tools etc.) must be used during the installation of this product(s).

Nitro Dave's LLC accepts NO responsibility for injuries or damages resulting during and/or from the installation of any product(s). All products are intended for off-road use only.

WWW.FLOSUPPLY.COM/PAGES/INSTALLATION-GUIDES



Hose End Assembly Tool Set (4AN,6AN,8AN,10AN,12AN)

PART NUMBER: 60-58368

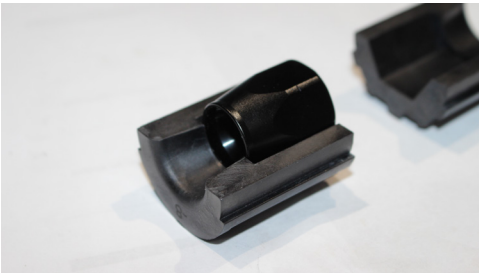
OPERATION INSTRUCTIONS



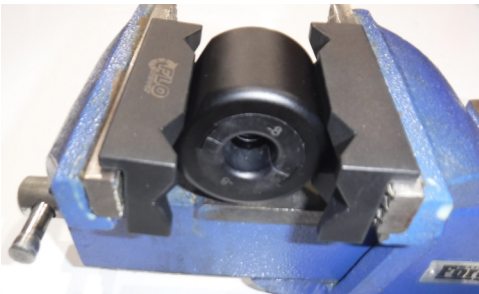
- Secure the Jig Holder in a vise or hold it in your hand.



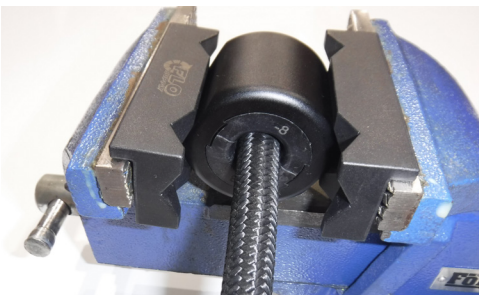
- Select the correctly sized Socket Clamp Guides for your hose assembly.



- Place your hose end socket into the socket clamp guide with the narrow end of the socket toward the tapered end of the socket clamp guide.



- Slide the socket clamp guide and socket assembly into the jig holder with the tapered end of the clamp guides facing out.



- Using a twisting and pushing motion, push the hose into the clamp guide and jig holder until the hose seats firmly in the hose end.

IMPORTANT: All appropriate safety equipment (gloves, tools etc.) must be used during the installation of this product(s).

Nitro Dave's LLC accepts NO responsibility for injuries or damages resulting during and/or from the installation of any product(s). All products are intended for off-road use only.

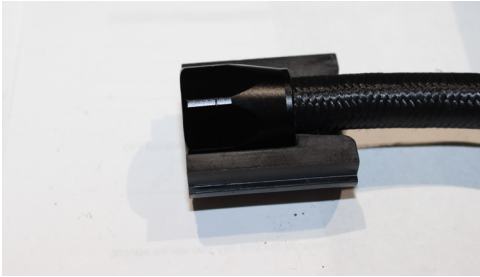
WWW.FLOSUPPLY.COM/PAGES/INSTALLATION-GUIDES



Hose End Assembly Tool Set (4AN,6AN,8AN,10AN,12AN)

PART NUMBER: 60-58368

OPERATION INSTRUCTIONS



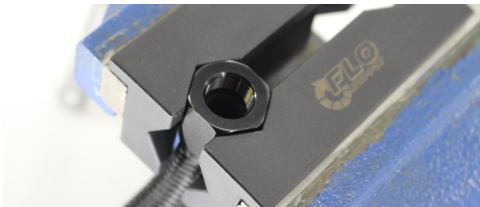
- Remove the socket clamps and hose from the jig holder and set them aside.



- Carefully inspect the hose making sure that the hose is firmly seated in the hose end. If it is not seated properly repeat the installation steps.



- Clean your hose and socket.



- Using the Flo Supply Vise Jaws and AN Wrenches, continue on with the instructions for the hose end that you are using.



IMPORTANT: All appropriate safety equipment (gloves, tools etc.) must be used during the installation of this product(s).

Nitro Dave's LLC accepts NO responsibility for injuries or damages resulting during and/or from the installation of any product(s). All products are intended for off-road use only.

WWW.FLOSUPPLY.COM/PAGES/INSTALLATION-GUIDES