



# Race-Light Single 5lb Bottle Roll Bar & Vertical Mounting Bracket

PART NUMBERS: 60-32038-V, 60-32038-RB

## ASSEMBLY INSTRUCTIONS

The Flo Supply Race-Light bottle mounting bracket is designed to provide a light weight and rigid mounting option for a 5lb CO2 aluminum bottle. If you need any assistance during installation or if you have questions about this bottle mounting bracket, call our Tech Help Line at (254) 848-4300.

### Tools Needed for Assembly:

- 3/16" Allen Wrench
- 1/4" Allen Wrench
- 1/2" Wrench
- Loctite



### Installation Tip:

Red Loctite is recommended on all threaded fasteners.



### Step 1:

Have the Flo Supply logo located in the center of the bottom plate. Using the supplied 5/16-18 x 1/2" button head cap screws, attach the two short support bars to the bottom plate, above and below the Flo Supply logo.



### Step 2:

Using the supplied button head cap screws, install the longest support bars on the bottom plate in the remaining two locations.

**IMPORTANT:** All appropriate safety equipment (gloves, tools etc.) must be used during the installation of this product(s).

Nitro Dave's LLC accepts NO responsibility for injuries or damages resulting during and/or from the installation of any product(s). All products are intended for off-road use only.

[WWW.FLOSUPPLY.COM/INSTALLATION-GUIDES](http://WWW.FLOSUPPLY.COM/INSTALLATION-GUIDES)



# Race-Light Single 5lb Bottle Roll Bar & Vertical Mounting Bracket

PART NUMBERS: 60-32038-V, 60-32038-RB

## ASSEMBLY INSTRUCTIONS



### Step 3:

Position the lower support ring so that the mounting tab and Flo Supply Logo are facing to the opposite direction of the bottom plate. Clock the lower support ring so that the two long support bars slide through the larger diameter holes across from one another. Using the supplied button head cap screws attach the front of the lower support ring to the short support bar.

*Note: Make sure you have the Flo Supply logo facing in the direction you prefer.*



### Step 4:

Install the supplied 5/16-18 x 3/4" long threaded stud through the rear hole in the lower support ring and into the short support bar. Screw the stud in 4 complete turns.



### Step 5:

Thread the mid length support bar onto the stud at the rear of the lower support ring.

**IMPORTANT:** All appropriate safety equipment (gloves, tools etc.) must be used during the installation of this product(s).

Nitro Dave's LLC accepts NO responsibility for injuries or damages resulting during and/or from the installation of any product(s). All products are intended for off-road use only.

[WWW.FLOSUPPLY.COM/INSTALLATION-GUIDES](http://WWW.FLOSUPPLY.COM/INSTALLATION-GUIDES)



# Race-Light Single 5lb Bottle Roll Bar & Vertical Mounting Bracket

PART NUMBERS: 60-32038-V, 60-32038-RB

## ASSEMBLY INSTRUCTIONS



### Step 6:

Position the top cradle support mount so that the mounting tabs are facing towards the lower support ring and the Flo Supply logo in the opposite direction. Slide the top cradle support mount down the long support bars. Using a supplied button head cap screw attach the cradle to the mid length support bar.



### Step 7:

Apply red Loctite to only one end of the supplied 5/16-18 x 1" long studs.



### Step 8:

Thread the end with Loctite into the two long support bars.

### Step 9:

Place the Flo Supply bottle in the Race-Light bracket.



**IMPORTANT:** All appropriate safety equipment (gloves, tools etc.) must be used during the installation of this product(s).

Nitro Dave's LLC accepts NO responsibility for injuries or damages resulting during and/or from the installation of any product(s). All products are intended for off-road use only.

[WWW.FLOSUPPLY.COM/INSTALLATION-GUIDES](http://WWW.FLOSUPPLY.COM/INSTALLATION-GUIDES)



# Race-Light Single 5lb Bottle Roll Bar & Vertical Mounting Bracket

PART NUMBERS: 60-32038-V, 60-32038-RB

## ASSEMBLY INSTRUCTIONS



### Step 10:

Position the bottle neck support so that it contours the front of the nitrous bottle neck and slides down the rod studs.



### Step 11:

Install the screw knobs on to the studs.



### Conclusion:

You have finished the Race-Light bracket assembly. Now bolt it into the desired location.

**IMPORTANT:** All appropriate safety equipment (gloves, tools etc.) must be used during the installation of this product(s).

Nitro Dave's LLC accepts NO responsibility for injuries or damages resulting during and/or from the installation of any product(s). All products are intended for off-road use only.

[WWW.FLOSUPPLY.COM/INSTALLATION-GUIDES](http://WWW.FLOSUPPLY.COM/INSTALLATION-GUIDES)



# Race-Light Single 5lb Bottle Roll Bar & Vertical Mounting Bracket

PART NUMBERS: 60-32038-V, 60-32038-RB

## INSTALLATION INSTRUCTIONS

The Flo Supply Race-Light bottle mounting brackets are designed to provide a light weight and rigid mounting option for a 5lb CO2 aluminum bottle. If you need any assistance during installation or if you have questions about this bottle mounting bracket, call our Tech Help Line at (254) 848-4300.

### Tools Needed for Installation:

- 1/4" Allen Wrench
- 1/2" Wrench
- Marker

### Notes:

1. Most CO2 controlled accessories require usage of the CO2 gas vapor rather than the CO2 liquid, for this reason CO2 bottles do not utilize an internal pick up tube and require mounting the bottle vertically with the bottle valve placed upward.
2. The Race-Light Single 5lb Mounting Bracket is designed for roll bar mounting or surface mounting. For roll bar mounting, use steps 2-9. For surface mounting, use steps 10-15.



### Step 1:

Determine the correct mounting location for your bottle. With your bottle in the bracket, hold it in the desired location.



**IMPORTANT:** All appropriate safety equipment (gloves, tools etc.) must be used during the installation of this product(s).

Nitro Dave's LLC accepts NO responsibility for injuries or damages resulting during and/or from the installation of any product(s). All products are intended for off-road use only.

[WWW.FLOSUPPLY.COM/INSTALLATION-GUIDES](http://WWW.FLOSUPPLY.COM/INSTALLATION-GUIDES)



# Race-Light Single 5lb Bottle Roll Bar & Vertical Mounting Bracket

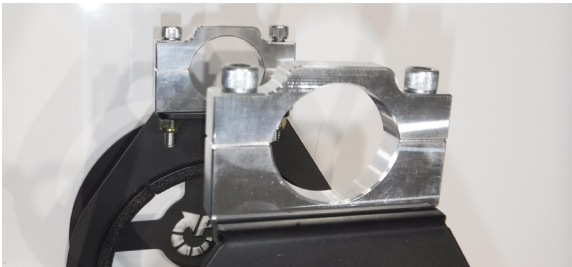
PART NUMBERS: 60-32038-V, 60-32038-RB

## INSTALLATION INSTRUCTIONS



### Step 2:

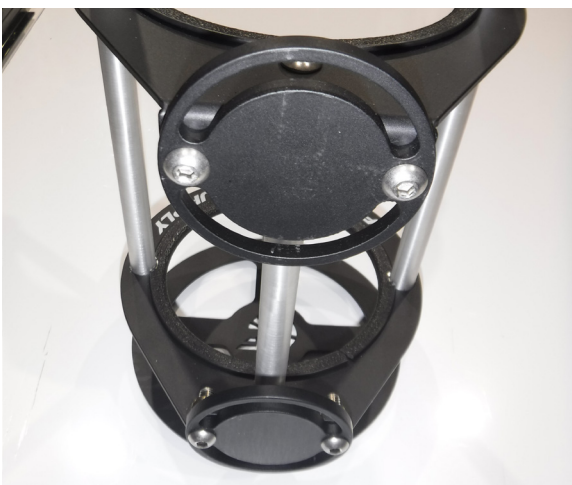
Once your location has been determined, you will need to position the roll bar brackets in the correct orientation. The roll bar brackets bolted directly to the bottle bracket will work on a vertical roll cage bar. For angled bar mounting, use of the provided pivot plates is required.



### Step 3:

#### Vertical Bar:

Using a 1/4" Allen wrench and 1/2" wrench, install the roll bar mounts to the flanges on the lower support ring and top cradle support.



#### Angled Bar:

Align the roll bar pivot plate holes with the mounting flange of the bottle bracket. Using a 3/16" Allen wrench and 1/2" wrench, bolt the plates in place with the provided 5/16-18 x 1" socket head cap screws.

**IMPORTANT:** All appropriate safety equipment (gloves, tools etc.) must be used during the installation of this product(s).

Nitro Dave's LLC accepts NO responsibility for injuries or damages resulting during and/or from the installation of any product(s). All products are intended for off-road use only.

[WWW.FLOSUPPLY.COM/INSTALLATION-GUIDES](http://WWW.FLOSUPPLY.COM/INSTALLATION-GUIDES)



# Race-Light Single 5lb Bottle Roll Bar & Vertical Mounting Bracket

PART NUMBERS: 60-32038-V, 60-32038-RB

## INSTALLATION INSTRUCTIONS



### Step 4:

#### Vertical Bar:

Remove the bottle from the bracket, then mark the desired bracket location on the roll cage bar.



#### Angled Bar:

After determining the correct orientation that matches the bar angles, bolt the bar mounts to the pivot plates in order to mark the roll bar.



### Step 5:

Remove the roll bar mounts from the bottle bracket, then position the roll bar mount around the bar with the provided 5/16-18 x 2 1/2" machine screw in the marked location. One bar mount is recessed for the screw head.



**IMPORTANT:** All appropriate safety equipment (gloves, tools etc.) must be used during the installation of this product(s).

Nitro Dave's LLC accepts NO responsibility for injuries or damages resulting during and/or from the installation of any product(s). All products are intended for off-road use only.

[WWW.FLOSUPPLY.COM/INSTALLATION-GUIDES](http://WWW.FLOSUPPLY.COM/INSTALLATION-GUIDES)



# Race-Light Single 5lb Bottle Roll Bar & Vertical Mounting Bracket

PART NUMBERS: 60-32038-V, 60-32038-RB

## INSTALLATION INSTRUCTIONS



### Step 6:

#### Vertical Bar:

Position the bottle bracket with the machine screws through the corresponding holes in the bottom ring and top cradle of the bottle bracket.



#### Angled Bar:

Position the mounting bracket roll bar pivot plates over the roll bar mount screws. Using a 1/4" Allen wrench and 1/2" wrench, tighten the bracket in place.



**IMPORTANT:** All appropriate safety equipment (gloves, tools etc.) must be used during the installation of this product(s).

Nitro Dave's LLC accepts NO responsibility for injuries or damages resulting during and/or from the installation of any product(s). All products are intended for off-road use only.

[WWW.FLOSUPPLY.COM/INSTALLATION-GUIDES](http://WWW.FLOSUPPLY.COM/INSTALLATION-GUIDES)





# Race-Light Single 5lb Bottle Roll Bar & Vertical Mounting Bracket

PART NUMBERS: 60-32038-V, 60-32038-RB

## INSTALLATION INSTRUCTIONS



### Step 7:

Using a 1/2" wrench and 1/4" Allen wrench, tighten the bracket and clamps to the roll cage bar.



### Step 9:

Place the bottle in the bracket. The neck bracket will slide over the threaded studs at the top of each side bar with the loop in the bracket toward the front of the bottle. Screw the knobs on to the studs.



### Conclusion:

You have finished the bottle bracket installation.

**IMPORTANT:** All appropriate safety equipment (gloves, tools etc.) must be used during the installation of this product(s).

Nitro Dave's LLC accepts NO responsibility for injuries or damages resulting during and/or from the installation of any product(s). All products are intended for off-road use only.

[WWW.FLOSUPPLY.COM/INSTALLATION-GUIDES](http://WWW.FLOSUPPLY.COM/INSTALLATION-GUIDES)



# Race-Light Single 5lb Bottle Roll Bar & Vertical Mounting Bracket

PART NUMBERS: 60-32038-V, 60-32038-RB

## INSTALLATION INSTRUCTIONS

### Additional Tools Needed for Surface Installation:

- Drill
- Drill Bit
- Wrench
- Ratchet
- Socket

**\*These are the tools required for installation of this bracket. You will need to specify the hardware to mount the bracket in your vehicle. The Race-Light bracket is designed for 5/16" diameter hardware.**



### Step 10:

Place your bottle in the bracket then place it in the desired location.



### Step 11:

Mark the location on the car panel.

**IMPORTANT:** All appropriate safety equipment (gloves, tools etc.) must be used during the installation of this product(s).

Nitro Dave's LLC accepts NO responsibility for injuries or damages resulting during and/or from the installation of any product(s). All products are intended for off-road use only.

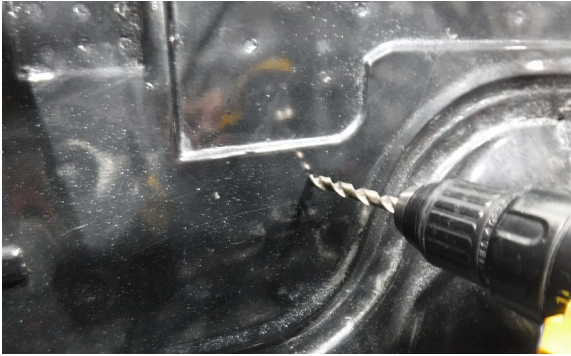
[WWW.FLOSUPPLY.COM/INSTALLATION-GUIDES](http://WWW.FLOSUPPLY.COM/INSTALLATION-GUIDES)



# Race-Light Single 5lb Bottle Roll Bar & Vertical Mounting Bracket

PART NUMBERS: 60-32038-V, 60-32038-RB

## INSTALLATION INSTRUCTIONS



### Step 12:

Check under the area you are drilling to ensure it is clear of any electrical or fuel systems components. If it is clear, use a center punch to mark the center of your mark, then drill the correct hole size for the hardware you are using.



### Step 13:

Remove the bottle from the mounting bracket, then fasten the bracket in place.



### Step 14:

Place the bottle back in the bracket in the correct position.

**IMPORTANT:** All appropriate safety equipment (gloves, tools etc.) must be used during the installation of this product(s).

Nitro Dave's LLC accepts NO responsibility for injuries or damages resulting during and/or from the installation of any product(s). All products are intended for off-road use only.

[WWW.FLOSUPPLY.COM/INSTALLATION-GUIDES](http://WWW.FLOSUPPLY.COM/INSTALLATION-GUIDES)



# Race-Light Single 5lb Bottle Roll Bar & Vertical Mounting Bracket

PART NUMBERS: 60-32038-V, 60-32038-RB

## INSTALLATION INSTRUCTIONS



### Step 15:

Place the neck bracket over the threaded studs at the top of each side bar with the loop in the bracket toward the front of the bottle. Screw the knobs on to the studs.



### Conclusion:

You have finished the bottle bracket installation.

**IMPORTANT:** All appropriate safety equipment (gloves, tools etc.) must be used during the installation of this product(s).

Nitro Dave's LLC accepts NO responsibility for injuries or damages resulting during and/or from the installation of any product(s). All products are intended for off-road use only.

[WWW.FLOSUPPLY.COM/INSTALLATION-GUIDES](http://WWW.FLOSUPPLY.COM/INSTALLATION-GUIDES)