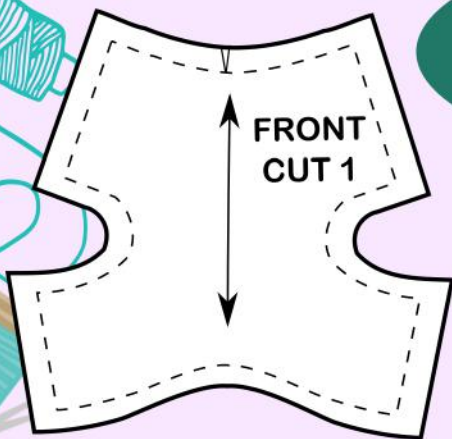
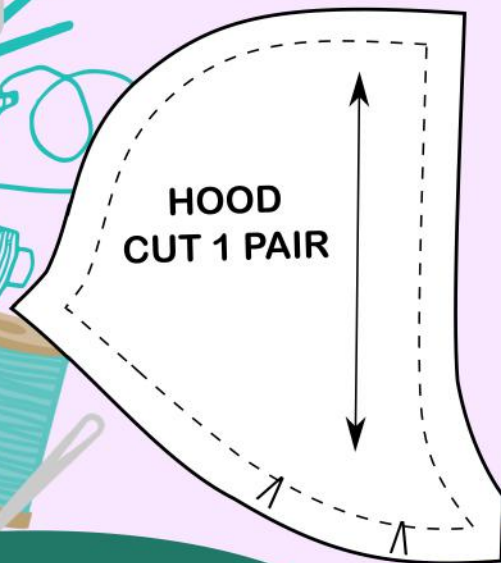
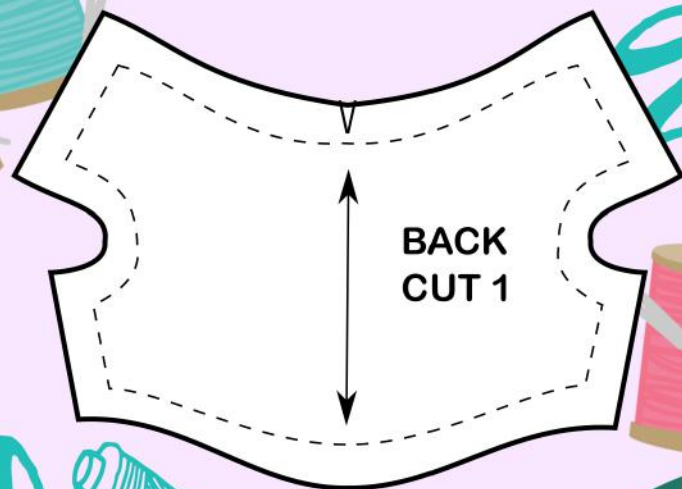


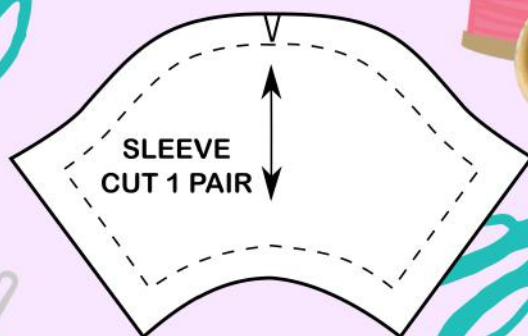
Make your own!

Zuma the Dog loves dressing up, his wardrobe is full of fun and funky clothes. Add to Zuma's pawsome fashion style by making your own hoodie for him



Make this cool hoodie for Little Stuffed Zuma!

Carefully cut out these pattern pieces as they will be the basic shapes you need for your hoodie



Making Instructions

After cutting out your pattern pieces in paper, pin them to a t-shirt / stretchy fabric of your choice and carefully cut around each piece making sure you have a pair of sleeves and hood pieces.

HOOD
CUT 1 PAIR

CB

SS

CF

Cut a small slit on the edge of the fabric indicated with a 'V' symbol. This will help to match up the pieces when stitching them together. These are called 'notches'.

3: Place front piece on to the back piece making sure correct sides face each other. Match up the shoulder seams and stitch both shoulder seams together indicated by the blue line to make the neck hole.

4: Stitch hood on to the neck seem on both front and back pieces along the orange line, matching the notches and making sure the front crosses over at the center front point.

5: Stitch the sleeve hem on both sleeves follow the purple line.

6: Stitch each sleeve in to each armhole, see turquoise line, matching the notch with the shoulder seem.

7: Stitch along the sleeve seem and body side on both sides making sure the armhole points are matched, see yellow line.

8: Stitch up the hem at the bottom. Et voila!

Code Key

CB = Center Back

CF = Center Front

SS = Shoulder Seem

Note: When stitching each piece together make sure they are placed with the correct side facing each other.

SLEEVE
CUT 1 PAIR

SS

CF

SS

FRONT
CUT 1

1: Stitch hood seems together along the red line.

2: Stitch hood hem along the green line.

SS

CB

BACK
CUT 1

