



Aquarius Fountain Set Eco

250, 550, 825, 1100

Operating instructions
Notice d'emploi
Instrucciones de uso

English

Français

Español

IMPORTANT SAFETY INSTRUCTIONS

- READ ALL INSTRUCTIONS BEFORE USING (THIS UNIT).
- SAVE THESE INSTRUCTIONS.
- Only connect the unit if the electrical data of the unit and the power supply match.
- Do not use the unit as a toy. Close attention is necessary when the product is used by or near children.
- Do not use the unit, if electrical lines or the housing are damaged.
- A damaged connection cable cannot be replaced. Dispose of the unit.
- Do not carry or pull the unit by its power cable.
- Route lines in such a way that they are protected from damage and do not present a tripping hazard.
- Protect the plug connections from moisture.
- Do not handle plug with wet hands.
- Grasp the plug to unplug it. Do not grasp on the cable.
- Never carry out technical changes to the unit.
- Only carry out work on the unit that is described in this manual.
- Always unplug the unit before working on it.
- Only use clear water and a soft brush to clean the unit.
- Only use original spare parts and accessories.
- Should problems occur, please contact the authorised customer service or OASE.

⚠ WARNING

Serious injury or death due to dangerous electrical voltage is possible with an electrical device in water operated with a voltage $U > 12 \text{ V AC}$ or $U > 30 \text{ V DC}$.

- ▶ Disconnect the unit from the mains before reaching into the water.
- ▶ Disconnect the unit from the mains before you start working on it.

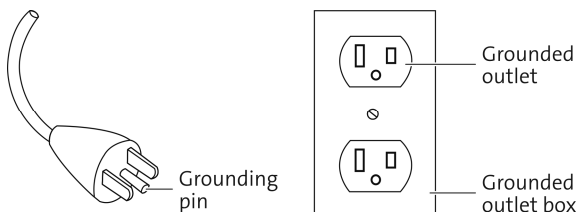
⚠ WARNING

There is a risk of electric shock if the unit's grounding conductor is not connected properly.

The unit must be grounded to ensure that in the event of a malfunction or breakdown, the electric current is discharged through the grounding and the risk of electric shock is reduced.

Grounding instructions:

- ▶ The unit is equipped with a power cord with a grounding conductor and a plug with a grounding pin. The plug must be plugged into a appropriate outlet that is installed and grounded in accordance with local codes and ordinances and is protected by a ground circuit interrupter (GFCI).
- ▶ Do not modify the plug. If the plug does not fit into the outlet, consult a qualified electrician for installation of a proper outlet.
- ▶ Check with a qualified electrician if you are in doubt as to whether the unit is properly grounded.

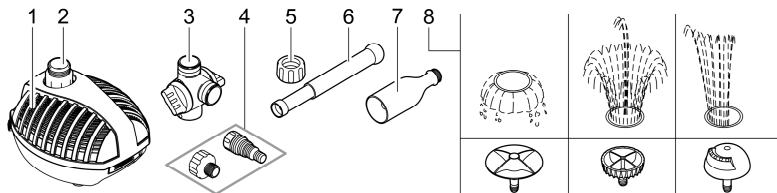


Contents

IMPORTANT SAFETY INSTRUCTIONS.....	2
Product Description.....	5
Intended use.....	6
Installation and connection.....	6
Commissioning/start-up.....	8
Maintenance and cleaning.....	8
Storage/winter protection.....	9
Malfunction remedy.....	9
Technical data.....	10
Wear parts.....	11
Disposal.....	11

Product Description

Overview



ARS0037

- | | |
|---|---|
| 1 | Filter housing with filter pump |
| 2 | Transition piece, fastens the filter pump to the filter cover |
| 3 | Branch valve with flow-rate regulators |
| 4 | Stepped hose adapter ½, ¾, 1 in for connection of a rivulet or a waterspout |
| 5 | Union nut for fastening the nozzle pipe on the branch valve |
| 6 | Nozzle pipe |
| 7 | Nozzle mount |
| 8 | Nozzle inserts (Vulkan, Lava, Magma) for different water patterns |

Symbols on the unit

IP68 

The unit is dust-tight and water-tight down to 6.6 ft (2 m).



Remove the unit in the event of freezing temperatures.



Danger for persons with pacemakers. The unit contains a strong magnet.



Do not dispose of the unit with the normal household waste.



Read the operating instructions.

Intended use

Only use the product described in this manual as follows:

- For pumping normal pond water for filter systems, waterfall systems and water course systems.
- For household use only.
- Operate in accordance with instructions. (→Technical data)

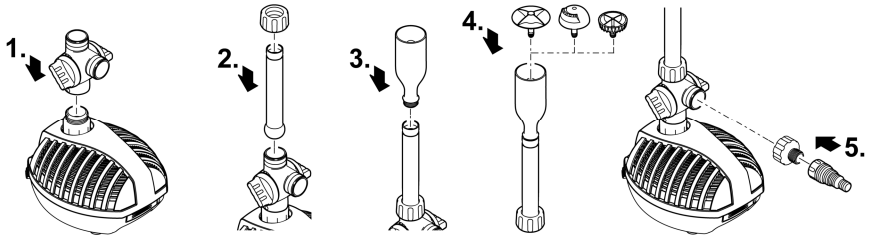
The following restrictions apply to the unit:

- Do not use in swimming ponds.
- Never use the unit with fluids other than water.
- Never run the unit without water.
- Do not use for commercial or industrial purposes.
- Do not use in conjunction with chemicals, foodstuff, easily flammable or explosive substances.

Installation and connection

Installing the water feature

In addition to the water feature, you can connect a rivulet or waterspout to the stepped hose adapter (hose diameter ½, ¾ or 1 in).



ARS0038

Installing the pump

⚠ WARNING

Severe injuries or death due to operation of this unit in a swimming pond. Defective electrical components will electrify the water with dangerous electrical voltage.

- ▶ Never operate the unit in a swimming pond.

⚠ WARNING

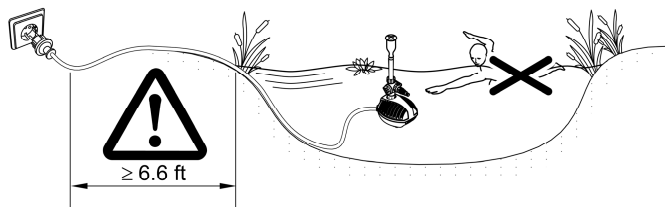
The unit is subject to dangerous voltage and must not be installed directly adjacent to the water. Otherwise there is a risk of severe injuries or death by electrocution.

- ▶ Install the unit at a distance of at least 2 m from the water to ensure that it is protected against flooding.

- Ensure that the connection to the power supply is at least 6.6 ft from the pond.
- Place the pump horizontally on a stable, mud-free surface.
- The pump is under water, the nozzle intake emerges from the water.

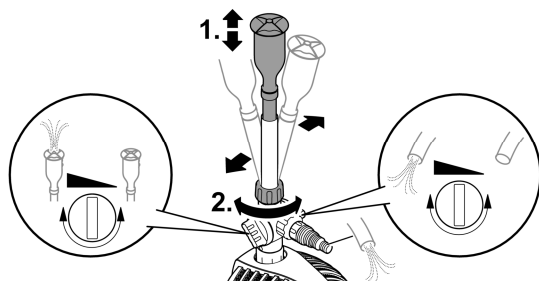
TIP! Thoroughly clean the pond or pool and place the pump approx. 200 mm above the bottom of the pond, so that no muddy water runs through the pump.

- Muddy water will cause the nozzle to clog faster and the impeller unit to become worn prematurely.



ARS0045

Adjusting the water feature



ARS0040

Commissioning/start-up

⚠ WARNING

Risk of electric shock. This unit is supplied with a grounding conductor and ground-type attachment plug.

- ▶ To reduce the risk of electric shock, be certain that the unit is connected only to a properly grounded, ground-type receptacle.

NOTE

Never connect the pump to a dimmer. Otherwise the pump will be destroyed.

- **Switching on:** Plug the power plug into the outlet.
 - The unit switches on immediately.
- **Switching off:** Pull the power plug from the outlet.

Maintenance and cleaning

NOTE

Never use chemical cleaning agents. These are hazardous to animals, plants and the environment.

- ▶ Only use clear water and a soft brush to clean the unit.

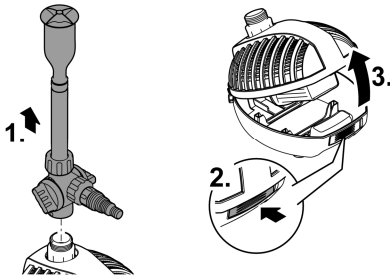
Recommendation regarding cleaning:

- ▶ Clean the unit as required, but at least twice a year.
- ▶ When cleaning the pump, pay particular attention to the impeller unit and the pump housing.

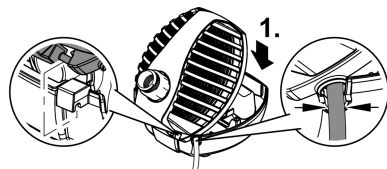
Opening/closing the housing

Before closing the housing, place the power cable in the recess in the housing to prevent it from being crushed.

Opening the housing



Closing the housing

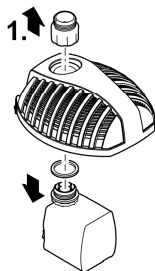


ARS0041

ARS0042

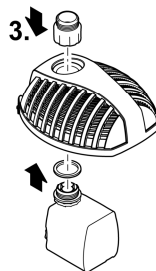
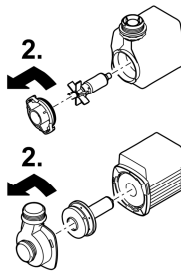
Cleaning/replacing the impeller unit

- Remove the pump cover or pump housing from the motor housing by turning it counter-clockwise (bayonet catch).
- After removing the impeller unit, clean all parts under running tap water.
- Replace a worn or damaged impeller unit.
- Assemble in the reverse order.



Aquarius
Fountain Set Eco
250

Aquarius
Fountain Set Eco
550, 825, 1100



ARS0046

Storage/winter protection

The unit is not frost-proof and has to be removed and put into storage if minus temperatures are expected.

How to correctly store the unit:

- Thoroughly clean the unit, check it for damage and replace any damaged parts.
- Store the pump submerged and in a frost-free environment.

Malfunction remedy

Malfunction	Possible cause	Remedy
Pump does not run	No mains voltage	Check the mains voltage.
	Impeller unit blocked	Clean the impeller unit
Insufficient delivery rate	Impeller unit running sluggishly	Clean the impeller unit
	Filter housing clogged	Clean the filter housing.
	Pressure loss in the hose too high	<ul style="list-style-type: none"> • Reduce the hose length and connecting pieces to a minimum • Route hose in a straight line
Unit switches off after a short running period	Water temperature too high	Adhere to the maximum water temperature of +77 °F (+35 °C)
	Unit is overloaded	<ul style="list-style-type: none"> • Remove blockage • The unit will switch on again automatically as soon as it has cooled down.

The water pattern is uneven or Nozzle is blocked incomplete

- Clean nozzle

Technical data

Unit data

Aquarius Fountain Set Eco		250	550	825	1100	
Connection voltage	AC V	120	120	120	120	
Mains frequency	Hz	60	60	60	60	
Max. power consumption	W	12	16	27	42	
Max. current consumption	A	0.2	0.3	0.4	0.6	
Max. pump capacity	gph	250	550	825	1100	
	l/h	940	2100	3120	4180	
Max. water column	ft	4.2	6.9	8.5	9.8	
	mwc	1.3	2.1	2.6	3.0	
Max. pump immersion depth	m	2	2	2	2	
	ft	6.56	6.56	6.56	6.56	
Water feature connection	in	1	1	1	1	
Stepped hose adapter	in	½, ¾, 1	½, ¾, 1	½, ¾, 1	½, ¾, 1	
Dimensions	Length	in	8.1	8.1	8.1	8.1
	Width	in	7.1	7.1	7.1	7.1
	Height	in	5.5	5.5	5.5	5.5
Weight	kg	1.8	1.8	2.0	2.2	
	lbs	4.0	4.0	4.4	4.9	

Permissible water values

		Fresh water, pond water
pH value		6.8 ... 8.5
Hardness	ppm	0.45 ... 0.48
	°dH	8 ... 15
Free chlorine	moz/gal	<0.04
	mg/l	<0.3
Chloride content	moz/gal	<33.4
	mg/l	<250
Salt content	%	<0.4
Overall dry residue	moz/gal	<6.67
	mg/l	<50
Temperature	°F	+39 ... +77
	°C	+4 ... +35

Wear parts

- Impeller unit

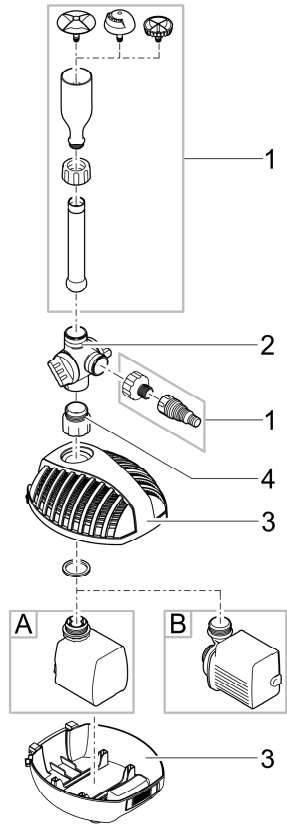
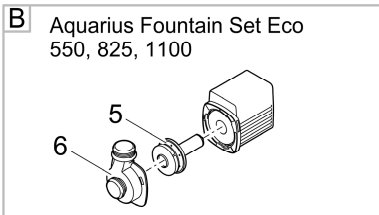
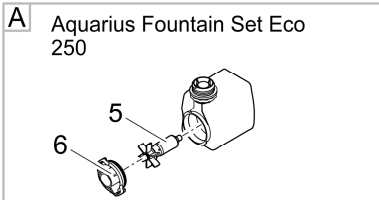
Disposal

NOTE

Do not dispose of this unit with household waste.

- ▶ Dispose of the unit by using the return system provided for this purpose.
 - ▶ Render the unit unusable by cutting the cables.
-

Aquarius Fountain Set Eco				
Pos.	250	550	825	1100
1	77948	77948	77948	77948
2	43290	43290	43290	43290
3	18237	18237	18237	18237
4	13427	13427	13427	13427
5	40981	78279	78280	78281
6	35762	78277	71810	78278



OASE North America Inc.
330.274.8317

www.atlantic-oase.com