



**SmokeGENIE V1 +  
SmokeGENIE remote V1  
FCC ID: 2A35T-G0916**

# **SmokeGENIE**

## **Theatrical Fog Generator**

### **INSTRUCTION MANUAL**

*Distributed By:*  
*Practical Magic & Innovation Co. Ltd.*  
*9A Leapont Centre, Fotan, Hong Kong*  
*Made in China*

*Date of Publication: Jan 2022*

This device complies with part 15 of the FCC Rules. Operation is subject to the following two conditions: (1) This device may not cause harmful interference, and (2) this device must accept any interference received, including interference that may cause undesired operation.



# TABLE OF CONTENTS

About this Manual  
Important Warnings  
List of Attachments  
About the Machine  
Atomizing Smoke Chamber  
Operational Instructions  
Safety Information

## ABOUT THIS MANUAL

This Manual provides instructions on how to prepare the SmokeGENIE and its accessories for making smoke, and to walk the user through all the features as well as all safety information. PLEASE READ THIS MANUAL and familiarize yourself with the rules before using the machine. You may also watch our video tutorial here (SCAN QR CODE):

VIDEO TUTORIAL



FACEBOOK  
USER GROUP



## IMPORTANT WARNINGS

Turn OFF the  
SmokeGENIE  
before storage.



Smoke is HOT.  
Do NOT point  
at the eyes!



HOT CHAMBER.  
Do not touch  
When Cap is PINK.



NOT A TOY.  
Children users need  
ADULT supervision.



AVOID any  
SENSITIVE Smoke  
Detectors nearby.



FOR VISUAL EFFECTS  
Only. Do NOT Directly  
ingest smoke.



# LIST OF ATTACHMENTS FOR SMOKEGENIE

1. Atomizing Smoke Chamber x 2
2. Silicone Extension Tube - 30cm
3. Precision Nozzle (Long)
4. Precision Nozzle (short)
5. Precision Nozzle (60 Degree turn) x 2
6. High Pressure Jet-Tip
7. 1/4 inch Universal Mount Adapter
8. Liquid Nozzle
9. Wireless Remote – requires one 23A 12V battery (NOT INCLUDED)

Some attachments may not be in your particular package.  
You may buy additional attachments at [www.pmigear.com](http://www.pmigear.com)



# ABOUT THE MACHINE

## SMOKE OUTPUT

DO NOT POINT directly at people without a nozzle.

## CHAMBER DISPLAY AREA

To check for level of fog Liquid left. Must refill when less than 1/3 liquid is left.

## POWER BUTTON

Press once to check battery, then Press 3 times to toggle on/off

## UP BUTTON

Increase the power level

## TOGGLE BUTTON

Toggle between modes: Smoke / Wind Level

## DOWN BUTTON

lower the power level

## USB-C PORT

For Fast Charging (Won't generate smoke while charging)

## LCD DISPLAY



## POWER LEVEL

Left: smoke level (1-5)  
Right: wind level (1-5)

## TIMER

for smoke output

## BATTERY LEVEL

Left and Right batteries

## HEAT SHIELD

magnetically attached

## SMOKE BUTTON

Press to make smoke

## BATTERY COMPARTMENT

Fits two 18650-type batteries (NOT INCLUDED)

## OTHER ITEMS IN THE BOX:

- REMOTE (433mHz RF)
- CLOUD FORMULA Fog liquid (VG + PG)
- Attachment and Accessories

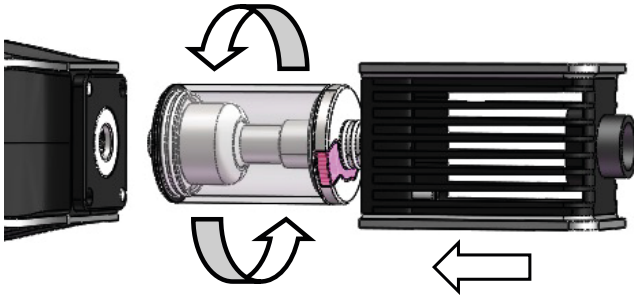
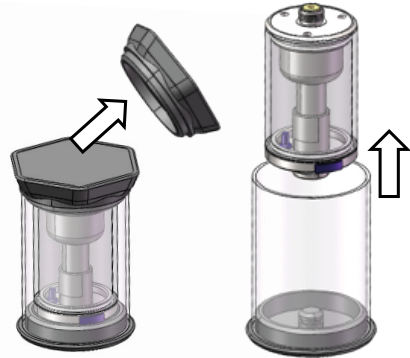


# ATOMIZING SMOKE CHAMBER

## AIRTIGHT STORAGE CAPSULES

REMOVE the Chamber from the air-sealed capsule by removing the bottom cap, and lifting the chamber out.

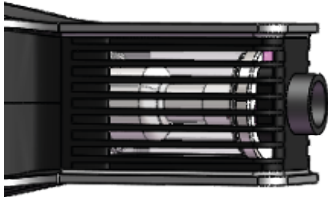
ALWAYS keep chambers in air-sealed capsules when in storage.



## INSTALLING THE CHAMBER

ROTATE Clockwise to screw the chamber on to the Genie. DO NOT OVER-TIGHTEN the chamber.

When turned on, the display will show "TANK CONNECTED" when chamber is detected. Then tighten it for one more HALF turn, this is optimal tightness.

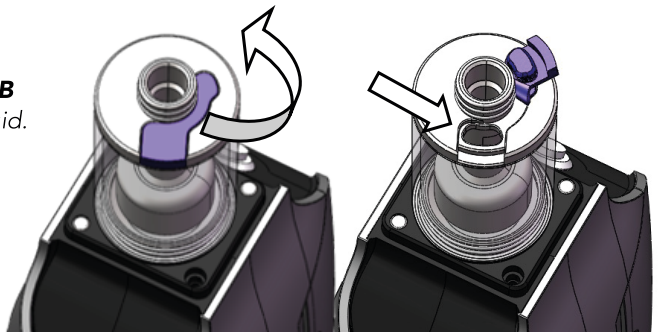


## MAGNETIC HEAT SHIELD

Always keep the Heat Shield on. Do not hold the machine by the heat shield area.

## HEAT-SENSITIVE SILICONE TAB

Gently peel back to refill fog Liquid. When chamber goes over 60 DEGREES CELCIUS, The cap will turn PINK against burning hazard.



# OPERATIONAL INSTRUCTIONS

*The SmokeGENIE is designed to be easy to use with minimal maintenance. With a simple 3-step setup, it will be ready to serve you with a long service time.*

## SET-UP

1. *Open the Silicone cap on top of the Oil Chamber and fill it with the supplied "Cloud formula" Fog Liquid supplied with the package.  
IMPORTANT: When Opening a BRAND NEW Chamber, please fill the chamber to full, keep the Silicone Tab open and leave for 15 minutes. This allows the chamber to be properly soaked before operation.*
2. *Screw the Chamber on top of the SmokeGENIE (see previous page)*
3. *Install the Batteries (2 x 18650 for GENIE, and 1 x 23A battery for the remote, see previous page)*

*And now you are all set!*

## OPERATION

1. *Turn on SmokeGENIE by pressing the ON/OFF button 3 times (refer to "ABOUT THE MACHINE")*
2. *Adjust the power and wind output with the buttons if needed*
3. *Press the Smoke Button/Remote button to make smoke*
4. *Remember to turn off SmokeGENIE by pressing the ON/OFF button 3 times  
Auto-Power off - The Screen will turn off after 10 seconds, and the machine will turn off if left idle for 120 minutes*

## BATTERY

1. *Charging – the SmokeGENIE is capable of 3 hours fast-charging through the USB-C charging port. (Battery level is displayed on the LED screen. We recommend charging when the battery is below 2 bars.)*
2. *Battery Replacement - SmokeGENIE operates on 2 x 18650 batteries. For replacement, simply open the magnet battery cover and replace batteries.*

## FOG LIQUID REFILL

1. *The liquid level is visible at all times through the heat shield in the Chamber. Refill whenever the liquid level drops below 1/3.*
2. *Open the Silicone cap on top of the Oil Chamber and fill it with the cloud formula supplied with the package.*

## MAINTENANCE

1. *Unscrew the old Chamber*
2. *Screw On new Chamber (follow set-up instruction if using a new chamber)*

# SAFETY INFORMATION

*We have designed SmokeGENIE to be as user friendly as possible. However, due to the heat-related nature of smoke generation, it does require proper handling to ensure the safety of users and everyone on set.*

*With proper handling, SmokeGENIE is a safe and reliable tool for professionals.*

*AVOID pointing the machine downward. While the chamber can produce short bursts of smoke in all orientations, tilting the machine downward may affect the flow of the liquid. If you want to make smoke continuously, keep the machine pointing at least horizontally, or use an adapter to point the smoke downward.*

*DO NOT point the smoke directly at people! The smoke right out of the chamber is hot, and occasionally, hot droplets of liquid may escape when machine have operated for a long period. Keep a minimum distance of 3m away from the nozzle.*

*DO NOT touch the chamber during operation! The Chamber is HOT during smoke generation.*

*DO NOT touch the chamber when the silicone cap turns PINK. The Silicone cap for refilling is coloured with heat sensitive paint. It will turn PINK when the chamber is hot. Wait until the cap turns back to dark purple before removing the chamber.*

*DO NOT operate the machine near flammable, combustible materials, or materials that s is extra sensitive to heat. Keep a minimum distance of 50cm.*

*DO NOT point the smoke near source of ignition, like fires or sparks. Keep a minimum distance of 50cm.*

*DO NOT use other fog liquids with SmokeGENIE. The PMI cloud formula is designed to optimize the machine's performance and durability. Due to the unique design of our chamber, liquid form other smoke machines will NOT WORK and may cause undesired effects. Unless you are 100% sure what you are doing, we strongly recommend only using our smoke formula with SmokeGENIE.*

*DO NOT inhale the smoke directly. While our formula is non-toxic, it is not made for direct inhalation and the high temperatures may cause burns.*

*DO NOT let children play with SmokeGENIE without adult guidance. As user friendly as it is, SmokeGENIE is NOT a toy and could be a fire hazard for children if not handled properly.*

*DO NOT operate SmokeGENIE near smoke detectors. Due to the nature of smoke generation, the smoke made by SmokeGENIE will trigger smoke detectors that are designed to detect small particles.*