

certificate ID
2BB03

Emerald Kush Farms
Energy Vape Cart CBD

HB701 Certificate of Compliance



prod. date 1/28/2022
issue date 2/4/22 9:23 AM

This Product Has Been Tested and Meets the Quality Assurance Requirements of the State of Montana

Stillwater Laboratories

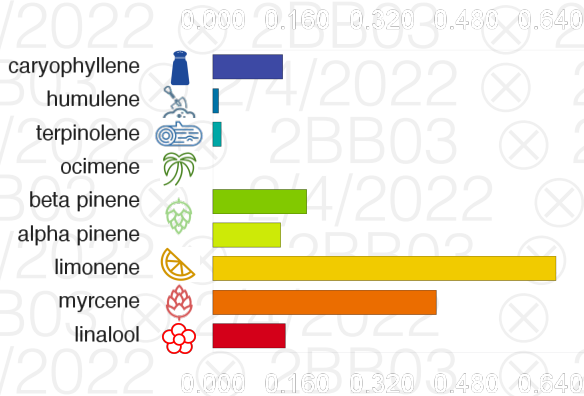
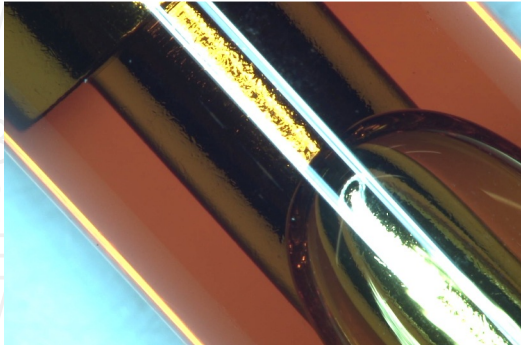
12981
order

total cannabinoids **54.47%** per **1/2 gram**

total THC ‡ **ND**
total CBD ‡ **52.67%**

Incoming Inspection MSP-7.5.1.2

DESCRIPTION: Vape cartridge sample (2.00g) received 2/1/2022 12:14:28 PM in a client-labeled Plastic Box, collected at dispensary/grow. Two per container. 1 and sample tag S2EIG.



SECURITY FEATURE: WATERMARK MUST MATCH CERTIFICATE ID AND ISSUE DATE

Potency MSP-7.5.1.4

		LOD	LOQ	error
total cannabinoids	54.47%	0.001	0.004	±1.279%
total THC (decarbed)	ND	0.001	0.004	±0.004%
total THC (THC+THCa)	ND	0.001	0.004	±0.004%
total CBD (decarbed)	52.67%	0.001	0.004	±1.237%
total CBD (CBD+CBDA)	52.67%	0.001	0.004	±1.237%
tetrahydrocannabinolic acid (THCa)	ND	0.001	0.004	±0.004%
Δ9-tetrahydrocannabinol (Δ9 THC)	ND	0.001	0.004	±0.004%
Δ8-tetrahydrocannabinol (Δ8 THC)*	ND	0.002	0.005	±0.005%
tetrahydrocannabivarin (THCv)	ND	0.002	0.005	±0.005%
cannabidiolic acid (CBDA)	ND	0.001	0.004	±0.004%
cannabidiol (CBD)	52.67%	0.001	0.004	±1.237%
cannabivarin (CBDv)	0.15%	0.001	0.004	±0.008%
cannabigerolic acid (CBGA)	ND	0.001	0.004	±0.004%
cannabigerol (CBG)	ND	<0.001	0.001	±0.001%
cannabinol (CBN)	0.48%	0.001	0.002	±0.014%
cannabichromene (CBC)	1.17%	0.001	0.004	±0.032%

Terpenes MSP-7.5.1.6

		LOD	LOQ	error
total terpenes	1.737%	0.0009	0.0026	±0.0489%
linalool	0.137%	<0.0010	0.0012	±0.0049%
β-myrcene	0.423%	0.0009	0.0028	±0.0141%
D-limonene	0.650%	0.0006	0.0017	±0.0190%
α-pinene	0.128%	<0.0010	0.0011	±0.0045%
β-pinene	0.177%	0.0008	0.0023	±0.0071%
ocimene	<LOQ	0.0016	0.0048	±0.0049%
terpinolene	0.015%	0.0011	0.0034	±0.0038%
α-humulene	0.010%	0.0008	0.0023	±0.0025%
β-caryophyllene	0.132%	0.0021	0.0064	±0.0099%
α-bisabolol	ND	0.0017	0.0051	±0.0051%
camphene	0.026%	0.0010	0.0029	±0.0036%
Δ3-carene	0.037%	0.0042	0.0127	±0.0137%
caryophyllene oxide	ND	0.0027	0.0082	±0.0082%
para-cymene	ND	0.0160	0.0480	±0.0480%
eucalyptol	ND	0.0022	0.0067	±0.0067%
geraniol	ND	0.0067	0.0201	±0.0201%
guaiaol	ND	0.0021	0.0064	±0.0064%
isopulegol	ND	0.0021	0.0063	±0.0063%
cis-nerolidol	ND	0.0036	0.0108	±0.0108%
trans-nerolidol	ND	0.0018	0.0054	±0.0054%
α-terpinene	ND	0.0011	0.0033	±0.0033%

Pass / Fail Criteria

Microbial (Plating) MSP-7.5.1.10

FAIL: no failures
PASS: E.coli, Salmonella sp., molds

Pesticides MSP-7.5.1.8

not required / not requested

Solvents MSP-7.5.1.7

not required / not requested

Mycotoxins MSP-7.5.1.8

not required / not requested

Moisture MSP-7.5.1.3

not required / not requested

Metals MSP-7.5.1.7

not required / not requested

Analysis Location: L-00001

Certified by:



https://customer.a2la.org/index.cfm?event=directory.detail&labPID=423635B2-5128-4C6F-871A-419DCF43B0D7

Stillwater Laboratories Inc.

MT License L0001, L00007, L00010
6073 US93N Suite 5, Olney MT 59927
1408 Unit 4 Gold Ave, Bozeman MT 59715
Ph 406-881-2019. www.stwlab.com

These results are only valid for the samples tested. • Potency (cannabinoid concentration) is calculated as: [cannabinoid] = [cannabinoid]_{HPLC} x volume_{dilution}/m_{dry}. •• Decarboxyated cannabinoid concentration is calculated XXX_{total} = 0.877 x XXX_a + XXX ••• Standards are used to calibrate the resulting data and estimate error using a standard estimate of error method; LOD is the limit of detection (3.3s), LOQ is the limit of quantification (3xLOD), and experimental error is calculated from weighing, dilution, and interpolation error using the formula s_g² = Σ (∂f/∂i)² s_i² where i is the contributor to error. The 95% confidence range is calculated from: (concentration) ± t_{CL90} x s_g. Sampling error is not considered in error calculations. ND = not detected (< LOD), NT = not tested, NL = no limit, NA = not applicable. ‡ = decarbed, * = analyte is off-scope.

certificate ID
2BB03

Emerald Kush Farms
Energy Vape Cart CBD

ANALYTICAL DATA

**Stillwater
Laboratories**

Report Version: 1
Analysis Location: L-00001



12981
order

order 12981
rec'd date 2/1/2022 12:14:28 PM
issue date 2/4/2022 9:23:31 AM

Methods and Instruments

MSP-7.3.1.1	BAL-05	2/1/2022	MSP-7.5.1.7	QP2020/HS20	2/2/2022	L-00001
MSP-7.5.1.2	YSC HD801m12	2/2/2022	MSP-7.5.1.8	LCMS8060	2/2/2022	
MSP-7.5.1.3	6MOC63u	2/2/2022	MSP-7.5.1.8	LCMS8060	2/2/2022	
MSP-7.5.1.4	LC-2030C	2/2/2022	MSP-7.5.1.10A	Hardy Diag	2/2/2022	
MSP-7.5.1.6	QP2020/HS20	2/2/2022	MSP-7.5.1.11	ICPMS2030	2/2/2022	

Microbial (Plating) MSP-7.5.1.10

	limit	LOD	LOQ	error	result
E. coli	ND	0CFU	0.0 0.11	±0.1CFU	PASS
Salmonella sp.	ND	0CFU	0.0 0.11	±0.1CFU	PASS
molds	ND	10000CFU	1.9 5.6	±5.6CFU	PASS

SECURITY FEATURE: WATERMARK MUST MATCH CERTIFICATE ID AND ISSUE DATE

These results are only valid for the samples tested. • Standards are used to calibrate the resulting data and estimate error using a standard estimate of error method; LOD is the limit of detection (3.3s_i), LOQ is the limit of quantification (3xLOD), and experimental error is calculated from weighing, dilution, and interpolation error using the formula $s_g^2 = \sum (\partial f / \partial i)^2 s_i^2$ where i is the contributor to error. The 95% confidence range is calculated from: (concentration) ± t_{CL90} × s_g. Sampling error is not considered in error calculations. ND = not detected (< LOD), NT = not tested, NL = no limit, NA = not applicable.

Certified by:



Stillwater Laboratories Inc.
MT License L0001, L00007, L00010
6073 US93N Suite 5, Olney MT 59927
1408 Unit 4 Gold Ave, Bozeman MT 59715
Ph 406-881-2019. www.stwlab.com