

Detection Characteristics

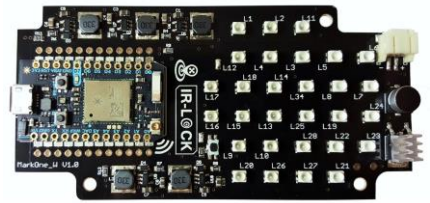
MarkOne w/ Wifi (V1.0) ⁽¹⁾

IR-LOCK Sensor

The **MarkOne** beacon system enables reliable target detection and tracking in any lighting condition, including bright sunlight and complete darkness. The **IR-LOCK Sensor** can interface with virtually any electronics hardware via I2C, SPI, UART, USB, or Analog.



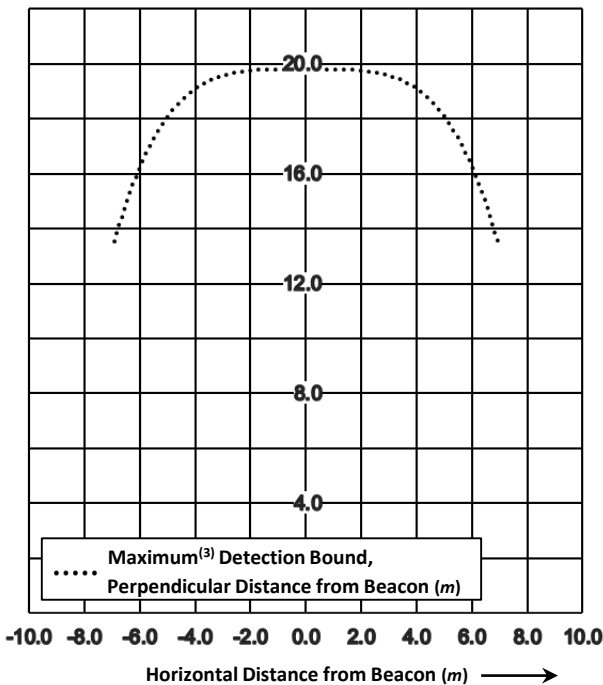
IR-LOCK Sensor



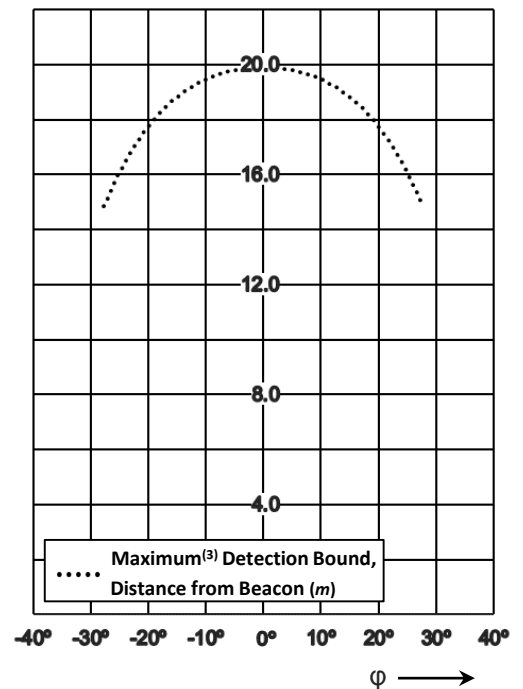
MarkOne w/ Wifi (V1.0)

Detection half angle, φ : $>30^\circ$
Maximum detection range at $\varphi=0^\circ$: 19.8m
Lens focal length: 3.6mm

Detection Characteristics⁽²⁾, Cartesian



Detection Characteristics⁽²⁾, Angular



(1) The IR-LOCK Case is recommended for optimal outdoor performance.

(2) Test Conditions:

- Outdoors in moderate sunlight
- Sensor Firmware: *MarkOneBeta_1.0.1.hex*
- Max detection range decreases slightly in bright sunlight conditions. Use case for optimal performance.

(3) Detection range may extend further than maximum detection bound, but with reduced detection rate.

Website: www.irlock.com

Product Information: <http://bit.ly/MarkOneW10>

Commercial Inquiries: sales@irlock.com

Technical Questions: info@irlock.com

