

The SMARTFEED MB-PP is a wire feeder with Brushless motor for robotic MIG-MAG welding, designed to work effectively with most robotic arms on the market. It is able to maximise the speed of the arm and its orientation thanks to its small size and low weight.



Aluminium chassis

Wire-end sensor socket

Four manual controls for maximum control:

- Wire inch forward
- Wire inch reverse
- Gas purge
- Air Blow

Digital communication socket



Compatible Push-Pull torches



24-pin connector for robotic Push-Pull torch and collision sensor

10-pin socket allowing access to four additional inputs as well as four additional outputs for even more PLC options

Euro Connector Socket



- Motorised drive with four powered rollers for precise wire feed between 0.6 to 1.2 mm
- Brushless motor 42 V (100 W), max. speed: 25m/min
- No tools required to change the spools

Supply with:



- 1 wire connector - 3 contacts
- 1 male wire connector - 24 points



COMPATIBLE POWER SOURCES

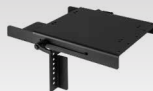
- NEOPULSE 320 C (062474)
- NEOPULSE 400 CW (062061)
- NEOPULSE 400 G (014497)
- NEOPULSE 500 G (014503)

OPTIONAL EXTRAS

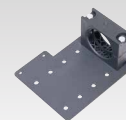


Robotic MIG connection cables - water

4 m	8 m	12 m
95 mm ²		
073517	069725	078581



Wire feeder mounting kits robotic



Interconnection cable fixing kit 075429

U ₁₁ / U ₁₂		Suitable Wires				Electronic Control	m/min	Supplied as standard		EN60974-5 (40°C)	IP	mm/kg
U ₁₁	U ₁₂	Stainless Steel	Alu.	CuSi CuAl	Flux-cored wires			Type				
48 V 2 A	24 V 1 A	0.6 → 1.6	0.8 → 1.6	0.8 → 1.2	0.9 → 2.4	100 W	1 → 25	1.0 1.2	F 061873	500 A @ 60% 460 A @ 100%	21	244 x 207 x 152 / 4.9