

Electric slitting machine RFD

Electric slitting machine RFD

This machine is specially designed for the longitudinal slitting of parallel trays and conical trays

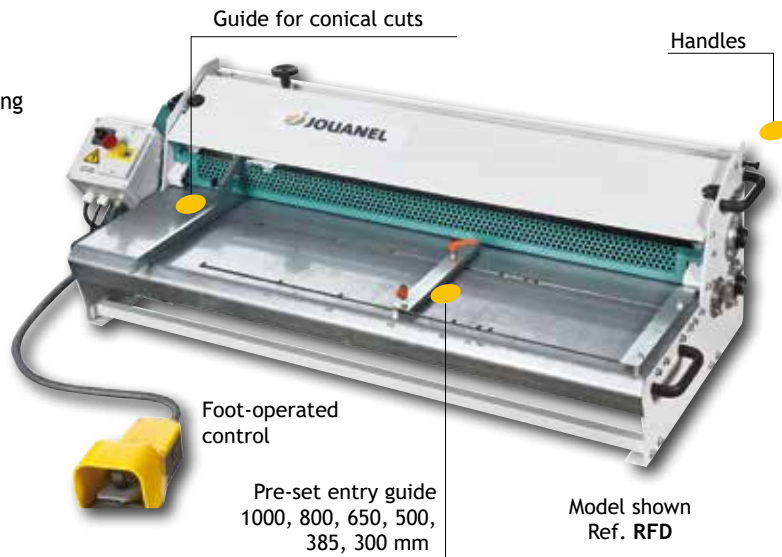
- Distance between columns (maximum width of the sheet) 1 350 mm
- 1 set of blades Ø 118 mm
- Drive by rubber rollers
- Foot-operated control
- Ground shaft Ø 60 mm

Options

- 1 additional set of blades Ref. RFD-CTSU* (to be planned with the order)
- Set of 4 braked wheels Ref. RFD-ROUL

Features	RFD
Weight (kg)	95
Speed (m/mn)	9
Power supply (V)	220 v single-phased
Power of the motor (kW)	0,37
Dimensions (mm)	1600 x 700 x 500
Capacity with one set of cutters* (mm)	lacquered steel: 0,65 aluminium: 1 zinc/copper: 0,8 stainless steel: 0,5
Operating height	420 /200
With / without wheels	

* Adding an extra set of blades reduces the cutting capacity



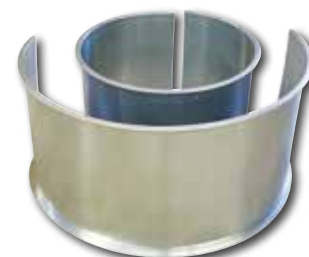
Electric arch-folding machine RCBPRO

Electric arch-folding machine RCBPRO

Machine designed for the bending of standing seam trays

- Equipped with 2 motors with variable speed to best adjust the bending on each side and the overall speed.
- Control by foot pedal and by switch (standard) allowing controlling the machine with hands free
- Forward/backward motion, step by step or continuous use

Features	RCBPRO
Weight (kg)	375
Minimum radius (mm), under condition and acc. to material	350
Dimensions (mm)	800 x 800 x 1 500
Power supply	220 v single-phased
Min-max capacity (mm)	zinc, copper, alu: 0,6-0,8



Examples of works