

# CGI/A-BAE Models



## Product **PLUS**

The new generation of electric shears CGI will know how to meet the quality requirements inherent to the businesses of metal protection of buildings and industrial metal sheet working. Besides its modern construction, the CGI was designed and manufactured for an intense use.

Its sturdy and practical design, as well as its excellent cutting quality come from more than 70 years of experience in the shearing business. The multiple functions of the numerical control developed by Jouanel Industrie, make it today one of the most efficient shear on the market.



Electric guillotine shears with electric back gauge  
Available in lengths 2m, 2.5m, 3m and 4m



CGI3080A-BAE Model  
shown with options

### Application areas

- Roofing
- Facade / cladding
- Metal carpentry
- Metal framework
- Metalwork and ironwork
- Maintenance workshops

### Advantages

- Reinforced rigidity, more cutting power
- Optimised for series production
- High operating comfort
- Possibility to cut to 5mm
- Powerful LED-lighting of the cutting line
- Control console on swivel arm (optional)

### Numerical control and electric back gauge

- Numerical Control with touchscreen 7"
- Quick programming of lengths and quantities
- Several programming menus of your choice
- Electric back gauge with fast movements
- Back gauge stroke from 5 to 750mm
- Conicity device for cross-cuts



## Features

CGI shears also available without numerical control: model with belt-type back gauge and front control (CGI-BCAV) or with rack-operated back gauge and right-sided control (CGI-BCREM)

	CGI2050A-BAE	CGI2550A-BAE	CGI3080A-BAE	CGI4080A-BAE
Useful cutting length (mm)	2 050	2 550	3 080	4 080
Max. capacity Zinc (mm)	3.0	3.0	2.0	1.5
Max. capacity Aluminum 1050-H44 (mm)	3.0	3.0	2.0	1.5
Max. capacity Steel S235JR (mm)	2.0	2.0	1.5	1.2
Max. capacity Stainless steel 304L (mm)	1.3	1.3	1.0	0.8
<i>Note: for cuts from 5 to 25mm, capacity reduction of -50%</i>				
Cutting rate (cuts / min)	25	25	25	25
Electric back gauge stroke (mm)	From 5 to 750	From 5 to 750	From 5 to 750	From 5 to 750
Power (kW)	2.2	2.2	2.2	2.2
Power supply *(V)	400V Three-ph + neutral + earth	400V Three-ph + neutral + earth	400V Three-ph + neutral + earth	400V Three-ph + neutral + earth
Dimensions (mm)	2 740 x 1 730 x 1 460	3 240 x 1 730 x 1 460	3 770 x 1 730 x 1 460	4 770 x 1 730 x 1 460
Weight (kg)	1 400	1 550	1 700	2 250

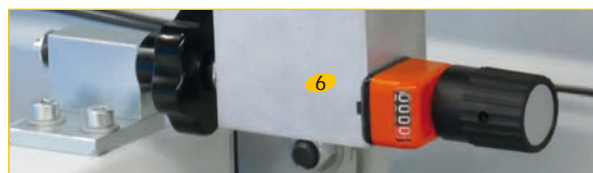
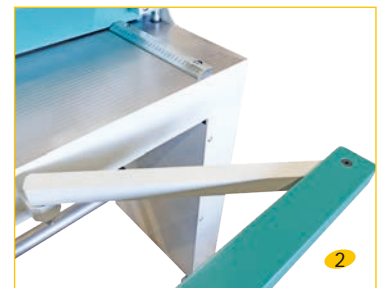
\* Choice of the voltage to be specified with the order / possible 220V power supply as an option



# CGI/A-BAE Models

## Standard equipment

- Front table, 300mm wide **1** and 800mm high, grooved every 10mm to facilitate cuts made without the back gauge
- Retractable front table + 480mm **2** to support large sizes
- Retractable back sheet support 120mm (option plate excluded)
- Graduated square gauge, 300mm on the left **3** 500mm on the right
- Automatic clamping system
- Foot-operated control
- Reversible one-piece blades
- Counter of number of cuts with reset possibly
- Photocells providing safe access to the back of the machine **4**
- Powerful lighting of the cutting line with LED strip **5** integrated in the sheet holding system (permanent lighting, better visibility)
- Slinging rings

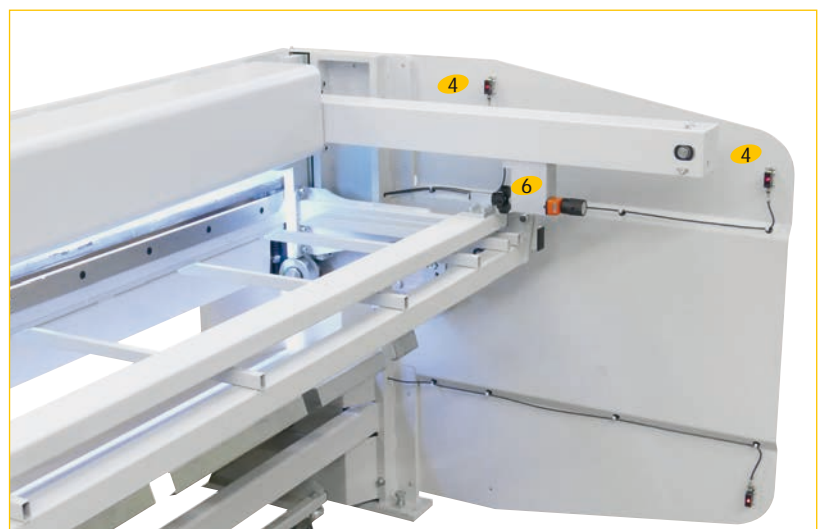


### • Electric back gauge

- Stroke from 5 to 750mm
- Conicity device enabling a slanted position of the back gauge with a counter (accurate to  $\pm 0.1\text{mm}$ ) **6**

### • Numerical control with color touchscreen 7" 16/9

(see details on the next page)



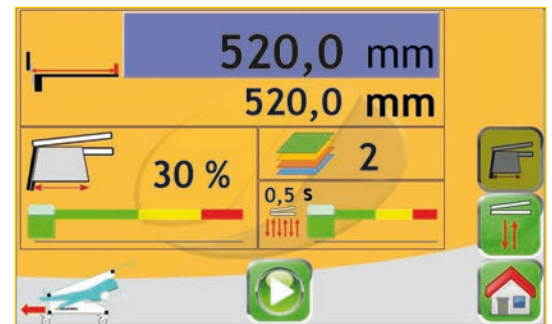
**Numerical control with color touchscreen 7" 16/9**

- Programming several lengths and quantities
- Adjustment of the cutting length, to increase the cutting rate of small parts
- Maintenance menu informing the operator of preventing maintenance actions to be carried out, depending on the total number of cuts
- Possibility of remote assistance from the factory through Internet
- Counter of the number of cut completed, daily or in total, with reset possibility
- Possible locking of the machine by password with several layers of access (operator, maintenance, administrator)



**To the operator's choice:**

- **Manual mode:** 1 back gauge movement, several cuts
- **Program mode:** each program can be named, saved, and contains several back gauge movements and several cuts which will automatically follow one another during production
- **Automatic mode:** run program, which were previously created in the program menu.



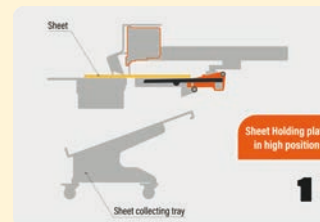
**Additional equipment**

- **Right side square gauge 1000mm**  
Ref. CGI-EQUER-1000



- **Left side square gauge 1000mm**  
Ref. CGI-EQUER-1000G

- **Automatic sheet holding plate 7**  
Automatic sheet holding plate, to support large sheets. Connected with the lowering of the blade, it also carries the sheets to the front in the collecting tray once the cut is made. (See references in the table below)

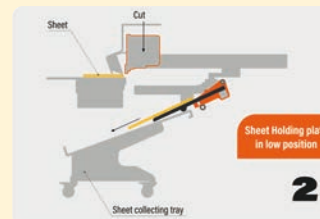


Automatic sheet holding plate

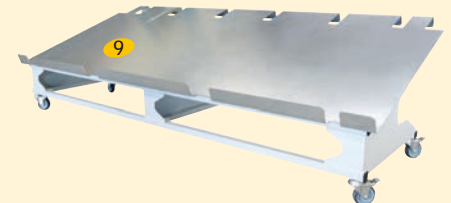


7

- **Control console on swivel arm 8**  
Swivel arm for viewing the controls on the screen regardless of the position of the operator (Length 1M) Desk located on the right side of the machine. Ref. CGI-POTOR



- **Moveable sheet collecting tray 9**  
On wheels with brakes and with two positions to collect the metal sheet up to 750 mm wide (except for the 4-meter model, Ref. CGI4080-BL) (See references in the table below)



**OPTIONS Features**

Automatic sheet holding plate (Ref.)	CGI2050A-PEIGNE	CGI2550A-PEIGNE	CGI3080A-PEIGNE	CGI4080A-PEIGNE
Maximum distance between 2 fingers (mm)	370	370	495	495
Minimum distance between 2 fingers (mm)	40	40	40	40
Number of fingers	10	11	12	14
Maximum format of sheets (mm)	750	750	750	750
Sheet collecting tray on wheels (Ref.)	CGM2050-BL	CGM2550-BL	CGM3080-BL	CGI4080-BL
Number of wheels with brakes	4	4	6	8

