

HOW TO APPLY GHOST BRICK MURALS

Thank you for purchasing a Retro Planet graphic decal. If you have any questions about applying your decal, give us a call at 888-242-6633 or 603-318-7200. We'll be glad to help. For more info and helpful tips, be sure to check our informative videos and FAQ section on www.retroplanet.com/wall-decals-info.html



Painter's Tape

Scissors/Utility Knife



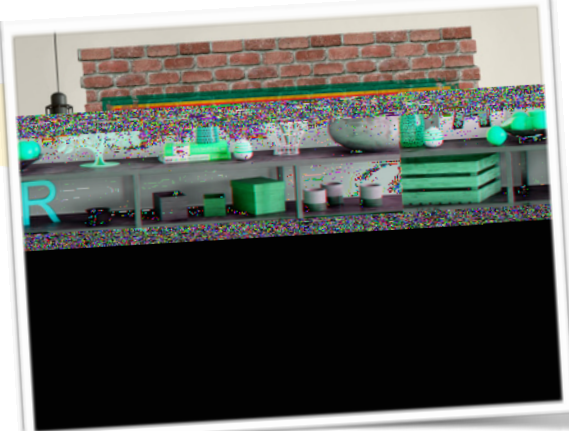
Measuring Tape

Squeegee/Credit Card



Level

Ladder/Step-stool



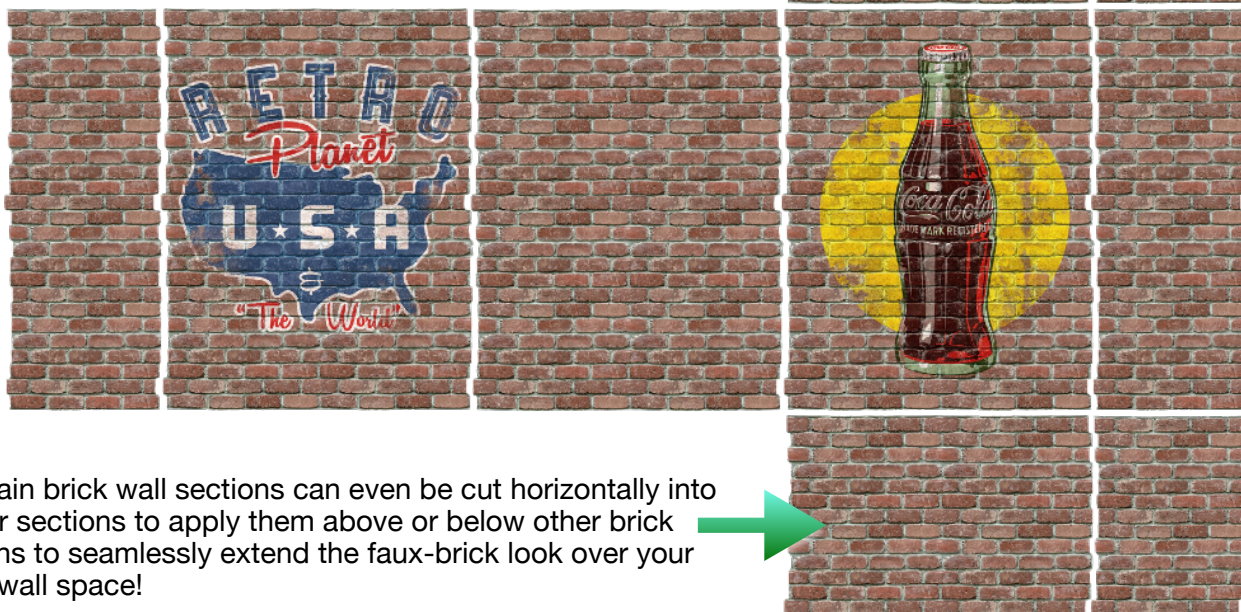
Before applying :

Our wall graphics feature a low-tack adhesive that makes them very easy to apply and reposition. However due to the large size of these graphics and multiple pieces that need to be aligned, we're offering some tips to help with your application.

- Lay your graphic on a flat surface overnight to straighten out any curl that occurred in the shipping tube.
- Clean your wall with a dust cloth.
- Allow newly painted walls to completely dry before applying any decals (3-6 months - See FAQ)

Arrangement :

Our brick designs feature interlocking sections that can be combined any way you need for a completely seamless look.



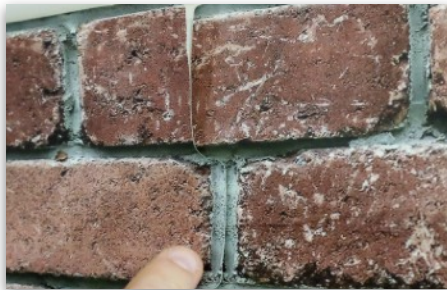
Our plain brick wall sections can even be cut horizontally into shorter sections to apply them above or below other brick sections to seamlessly extend the faux-brick look over your entire wall space!

On the plain brick sections we've added labels for TOP and BOTTOM to orient them properly.



Applying the mural to your wall :

- Set up any guidelines for leveling or centering on the wall ahead of time to help with overall placement. We recommend low-tack painters tape.
- When applying large multi-part murals, it's easiest to work with the center-most section first.
- Peel 4" or 5" of the backing from the top of the graphic. The exposed adhesive side will be used to hold the graphic in place as you roll the backing off and work your way down the graphic.
- Use a squeegee or credit card to flatten the graphic to the wall while rolling down sections of the backing as you go along. Work from the top down and out toward the sides to work any bubbles out past the edges.
- **We've included about 1/2" overlap at the edge of each section of the mural. Simply overlay the side section over the middle section and visually align the images. This overlap eliminates any chance of gaps when aligning the sections to each other.**



The uneven seam of our brick designs is very forgiving of slight mis-alignments and blends well when you look at the entire mural.

- Gently flatten the section to the wall with a squeegee or credit card by working from the seam outward. Don't press the decal hard to the wall as you may need to lift and reposition the tile to align it correctly all the way down the seam. If you need to reposition the section, gently peel it back from the wall. The low-tack adhesive of our graphics makes this easy to do as many times as needed.
- Once all the sections are applied and you are happy with the result, go over the entire graphic with your squeegee or credit card, to work out any bubbles and to press it more firmly in place.

