



# HAIRFOOD<sup>®</sup>

CLEANSE • CONDITION • CARE



# HAIRFOOD<sup>®</sup>

CLEANSE • CONDITION • CARE

## Cleanse, Condition & Care

Natural Look Hair Food is a complete Professional Hair Care range formulated with natural ingredients to deliver superb results whilst cleansing, conditioning, protecting and styling any hair type, in the salon or at home.

Developed by demand, from the needs of the professional hairdresser, for optimum client satisfaction, performance and value in the salon and at home.

Natural Look Hair Food combines three key, natural ingredients well-known to hydrate, nourish and strengthen the hair day after day.

- ✓ Active Botanical Extracts
- ✓ Wheat Amino Acids
- ✓ Quinoa Protein

Each formula is carefully developed to meet and adapt to the needs of each hair type. With Natural Look Hair Food, beautiful and healthy hair is easy!



Discover More



## Our three key ingredients for healthy hair are:



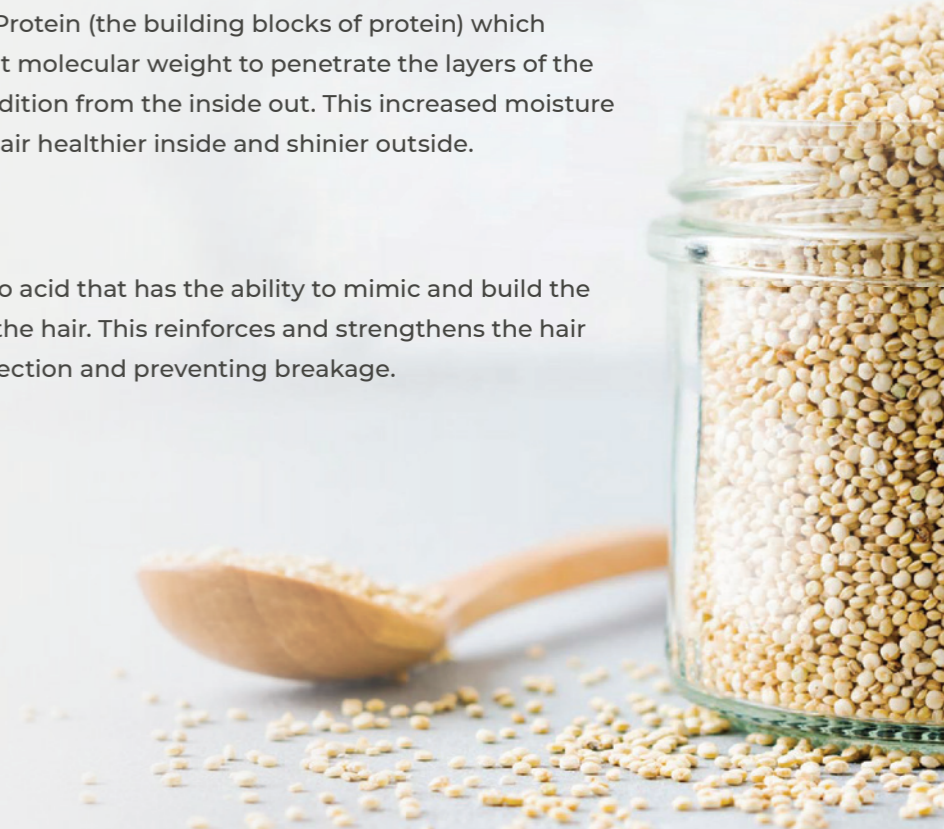
Natural Look Australia's exclusive herbal complex of leaves, flowers, fruit, herbs and roots (Extracts of Alfalfa, Red Clover, Arnica, Gentian Root, Juniper Fruit, Lemon Balm, Pine).



Known as Wheat Protein (the building blocks of protein) which contain the correct molecular weight to penetrate the layers of the hair shaft and condition from the inside out. This increased moisture retention makes hair healthier inside and shinier outside.



A hydrolysed amino acid that has the ability to mimic and build the natural keratin of the hair. This reinforces and strengthens the hair shaft, adding protection and preventing breakage.



# INTENSIVE®

DAMAGED HAIR THERAPY

Breathe new life into dry, damaged hair.

Is your hair in distress and in need of extra love? Cherish it with Intensive Damaged Hair Therapy and revitalise it from root to tip.

Intensive's blend of Natural and Organic Ingredients\* work from the inside out to revive your hair and protect it from breakage. No matter how the damage was done, your hair will feel healthy, soft and full of shine once more.



Discover More

## \*Active Botanical Extracts

Natural Look Australia's exclusive herbal complex of leaves, flowers, fruit, herbs and roots (Balm Mint, Juniper, Pine Leaf, Gentian, St John Wart, Arnica Montana, Red Clover, Alfalfa).



### FORTIFYING SHAMPOO

Quinoa Protein, Bamboo Leaf Extract, Active Botanical Extracts.

#### DEEP CLEANSING FOR DRY, STRAIGHTENED, PERMED OR COLOURED HAIR

Cleanses and protects dry, straightened, permed or coloured hair, stressed or parched by the harmful effects of environmental pressures, thermal styling and chemical treatments. Quinoa Protein and Active Botanical Extracts will strengthen hair bonds and restore body and shine to the hair, providing lasting style support.

#### ●● DIRECTIONS

Massage Intensive Fortifying Shampoo into wet hair and scalp to create a rich lather. Rinse thoroughly and repeat as desired.

We recommend to follow with Intensive Silk Enriched Conditioner and Intensive Pro-Vitamin Leave-In Treatment for ongoing support and protection.

60mL, 375mL, 1L, 5L



### SILK-ENRICHED CONDITIONER

Quinoa Protein, Chamomile, Active Botanical Extracts.

#### MOISTURISES DRY, STRAIGHTENED, PERMED OR COLOURED HAIR

Restores the moisture content in hair stressed or parched by the effects of environmental pressures, thermal styling, and chemical treatments. Quinoa Protein and Camomile Extract will strengthen hair bonds and provide support and nourishment to restore body and shine.



After cleansing the hair, distribute a small amount of Intensive Silk Enriched Conditioner evenly through hair with the use of a wide tooth comb. For maximum penetration, leave in hair for approximately 1-2 minutes. We recommend Intensive Pro-Vitamin Leave-In Treatment for ongoing protection.

60mL, 300mL, 1L, 5L



### BALSAM 2.5 FINISHING RINSE

Aloe Vera, Quinoa Protein, Active Botanical Extracts.

#### MOISTURISES AND NOURISHES CHEMICALLY TREATED HAIR / LOW PH FORMULA

With Acid rinse action formulated with organic ingredients, Balsam 2.5 Finishing Rinse is designed to restore the hair's natural pH level by closing the cuticle surface after chemical services. The low pH is extremely effective in its neutralising action, thus reducing tangles, extending treatment life and leaving the hair smooth, shiny, and more manageable.



Use immediately after all chemical services to the hair. Follow at home with your favourite Natural Look Shampoo, alternating with a regular pH balanced conditioner. Massage Balsam 2.5 Finishing Rinse gently through hair and distribute evenly with a wide tooth comb, leaving for approximately 1-2 minutes for maximum penetration, before rinsing thoroughly.

375mL, 1L, 5L



### CONCENTRATED TREATMENT VIALS

Panthenol (Vitamin B5), Active Botanical Extracts.

#### RESTRUCTURES, FORTIFIES & HYDRATES OVERSTRESSED, DAMAGED HAIR

Specifically formulated to repair overstressed and damaged hair from the frequent use of heat styling tools. A targeting treatment enriched with Pro-Vitamin B5 and Plant Extracts to nourish and hydrate, deeply penetrating the hair fibre to reconstruct from the inside. Strength is rebuilt, moisture is replenished and shine is restored. The hair looks visibly healthier, stronger and luminous.



After cleansing the hair, apply one vial on washed, towel-dried hair. Distribute evenly and massage gently, leaving for 2-5 minutes and rinse thoroughly. We recommend to use weekly or more often as necessary for hair that is overstressed and damaged. After Intensive Concentrated Treatment no additional conditioner is needed.

12 vials x 10mL



### RECONSTRUCTIVE TREATMENT

Aloe Vera, Quinoa Protein, Active Botanical Extracts.

#### FORTIFIES AND PROTECTS DRY, STRAIGHTENED, PERMED OR COLOURED HAIR

Fortifies and protects all hair types stressed or parched by the harmful effects of environmental pressures, thermal styling and chemical treatments. Quinoa Protein and the blend of Botanical Extracts will strengthen and restore moisture to the hair while equalizing the hair's porosity, and reducing split or broken ends.



After cleansing the hair with Intensive Fortifying Shampoo, apply Intensive Reconstructive Treatment liberally as required. Comb through to ends and leave for 5 - 15 minutes for maximum penetration. We recommend covering the hair with a towel or use steam to improve results, then rinse thoroughly.

25mL, 60mL, 200mL, 1L, 5L



### PRO-VITAMIN LEAVE-IN TREATMENT

Panthenol, Olive Leaf Extract, Quinoa Protein.

#### ONGOING PROTECTION FOR DRY, STRAIGHTENED, PERMED OR COLOURED HAIR

Leave-in protection for hair stressed or parched by the harmful effects of environmental pressures, thermal styling and chemical treatments. Panthenol and Olive Leaf Extract provide detangling properties and the ability to restore moisture and the correct natural pH balance to the hair. Used daily to condition and strengthen all hair types without adding extra weight.



Following the cleansing and conditioning of the hair apply by spraying a liberal amount of Intensive Pro-Vitamin Leave-In Treatment over the hair. To ensure maximum distribution the use of a wide tooth comb is recommended. For ongoing protection do not rinse out.

250mL



### HAIR SHEEN ENHANCEMENT

Vegetable Oils, Wheat Protein, Active Botanical Extracts.

#### NATURAL HEALTHY SHINE FOR DRY, STRAIGHTENED, PERMED OR COLOURED HAIR

Designed to give a natural healthy shine through its unique formulation of ingredients. Hair Sheen is a perfect substitute for sebum (hair's natural conditioner) often missing in dry or stressed hair types. It will not make hair oily, but will create a protective film against constant exposure to the sun's damaging rays and other environmental pressures.



Spray a fine mist of Intensive Hair Sheen Enhancement onto dry hair, holding the can approximately 30cm from the hair. Do not allow the hair to become saturated.

175g

# OASIS<sup>®</sup>

## MOISTURE THERAPY

Thirst relief for dry, dehydrated hair types.

Does your hair feel as dry as a desert? Give it some much-needed hydration with Oasis to make it glossy and healthy again.

Oasis' unique formulation containing Natural Oils, Active Botanical Extracts\* and Wheat Amino Acids nourishes and strengthens your hair, making it soft, smooth and manageable.



Discover More

### \*Active Botanical Extracts

Natural Look Australia's exclusive herbal complex of leaves, flowers, fruit, herbs and roots (Balm Mint, Juniper, Pine Leaf, Gentian, St John Wart, Arnica Montana, Red Clover, Alfalfa).



### MOISTURISING SHAMPOO

Shea Butter, Wheat Amino Acids, Active Botanical Extracts.

#### FOR NORMAL TO THICK, DRY, DEHYDRATED HAIR

Gently cleanses and moisturises normal to thick hair types through its unique formulation containing Shea Butter and Wheat Protein. Oasis Moisturising Shampoo will both nourish and strengthen the hair with regular usage leaving it soft and manageable with a wondrous shine.

#### ●● DIRECTIONS

Apply a small amount of Oasis Moisturising Shampoo to wet hair, massaging lightly to achieve a rich lather. Rinse well and repeat if necessary. For added moisturising effect follow with Oasis Moisturising Conditioner.

375mL, 1L, 5L



### BOOST HYDRATING SHAMPOO

Quinoa Protein, Avocado Oil, Peach Nut Oil.

#### FOR NORMAL TO FINE, DRY, DEHYDRATED HAIR

Containing Peach Nut Oil and Quinoa Protein, Oasis Boost Hydrating Shampoo will cleanse, moisture and energise fine limp or oily hair without weighing it down, leaving it feeling soft, and shiny with increased body and improved manageability.

#### ●●

Apply a small amount of Oasis Boost Hydrating Shampoo to wet hair, massaging lightly to achieve a rich lather. Rinse well and repeat if necessary. For added hydration follow with Oasis Moisturising Conditioner.

375mL, 1L, 5L



### MOISTURISING CONDITIONER

Peach Nut Oil, Avocado Oil, Wheat Amino Acids.

#### FOR ALL DRY, DEHYDRATED HAIR TYPES

Provides much needed moisture to dry, dehydrated hair types thus reducing the stress placed upon it by thermal styling and environmental pressures. Oasis Moisturising Conditioner unique formula contains Peach Nut Oil, Avocado Oil and Wheat Protein, to eliminate tangles and prevent fly-away hair, leaving it soft and shiny.

#### ●●

After cleansing the hair, apply Oasis Moisturising Conditioner as required by the degree of need and the hair's length. Using a wide tooth comb distribute evenly throughout hair, leaving for approximately 1-2 minutes for maximum penetration. On completion rinse thoroughly and style as desired.

300mL, 1L, 5L



### pH HAIR MOISTURISING CREAM

Panthenol, Wheat Amino Acids, Vitamin E, Active Botanical Extracts.

#### UV PROTECTION AND INTENSIVE MOISTURISER/ LEAVE-IN FOR DRY, DEHYDRATED HAIR

Includes UV protection to seal and protect the hair cuticle while restoring natural pH balance. Wheat Protein and Vitamin-E eliminate dry, split ends and fly away hair whilst providing protection from chemical treatments, thermal styling and the sun's harmful ultraviolet rays.

#### ●●

Apply Oasis pH Hair Moisturising Cream to the hair evenly and leave in. Use daily or before swimming to prevent colour fade caused by salt or chlorinated water. Suitable for use on wet or dry hair.

200mL, 500mL

# COLOURANCE®

SHINE ENHANCING

Retain your colour's original shine.

Do you want to protect your colour from fading? Colourance Shine Enhancing range maintains the vibrancy of your colour and protects hair from heat styling and moisture loss suffered due to colouring by nourishing the hair, resulting in increased hair strength and lustrous, silky soft finish.

Colourance Shine Enhancing range is enriched with Active Botanical Extracts and colourless Henna (also known as Neutral Henna), an excellent hair conditioner and a natural follicle repair that makes it soft, shiny and does not add any colour to the hair but enhances it's natural power and beauty.



Discover More

### \*Active Botanical Extracts

Natural Look Australia's exclusive herbal complex of leaves, flowers, fruit, herbs and roots (Balm Mint, Juniper, Pine Leaf, Gentian, St John Wart, Arnica Montana, Red Clover, Alfalfa).



### SHINE ENHANCING SHAMPOO

Colourless Henna, Aloe Vera, Wheat Amino Acids.

#### DEEP CLEANSING FOR COLOURED, BLEACHED OR HIGHLIGHTED HAIR

Gently cleanses and protects hair improving both its condition and manageability with regular usage. Enriched with Henna, a colourless natural organic protein, and Wheat Amino Acids. The pH formula will help prevent colour fade while improving the natural body and texture of the hair, often stressed through the colour process.

#### ●● DIRECTIONS

Apply a small amount of Colourance Shine Enhancing Shampoo to wet hair, massaging lightly to achieve a rich lather. Rinse well and repeat if necessary. For best results, we recommend to follow with Colourance Shine Enhancing Conditioner.

375mL, 1L, 5L



With Henna Extracts

### SHINE ENHANCING CONDITIONER

Colourless Henna, Wheat Amino Acids, Active Botanical Extracts.

#### MOISTURISES AND PROTECTS COLOURED, BLEACHED OR HIGHLIGHTED HAIR

Protects hair from colour fade and the moisture loss suffered due to regular colouring. The pH balanced formula will help maintain the natural body of the hair while improving shine and manageability. Enriched with Henna, a colourless natural organic protein, and Wheat Amino Acids.



Following cleansing the hair with Colourance Shine Enhancing Shampoo, apply a small amount of Colourance Shine Enhancing Conditioner to wet hair as required. The use of a wide tooth comb will help in distributing Conditioner evenly throughout hair avoiding unwanted tangling.

300mL, 1L, 5L



### SHINE ENHANCING MASK SPRAY

Vitamin F, Wheat Protein, Active Botanical Extracts.

#### UV FILTER & THERMAL PROTECTION LEAVE-IN, INSTANT DETANGLING

Colourance Shine Enhancing Mask Spray nourishes the hair cuticle and contains light reflecting ingredients that will provide colour protection from heat styling and UV rays, helping to maintain colour vibrancy. Instantly detangles the hair making combing easier. Regular usage will control frizzy hair and prevent split ends.



Following the cleansing and conditioning of the hair, towel dry, then spray evenly over the hair. To prevent colour fade and moisture loss, spray directly onto dry hair at any time. Comb through and leave-in.

250mL

## INTERVAL COLOUR REFRESHMENT - SHAMPOOS



### INTENSE RED | INTENSE COPPER | INTENSE VIOLET | INTENSE BROWN | VIOLET RED | FIRE RED | RICH CHOCOLATE | COOL CHOCOLATE | CREAM CARAMEL | ROSE BLONDE | BEIGE BLONDE

Colour Enhancing | Prevent Colour Fade | Intense Vibrant Results | Free from SLS, Ammonia or Peroxide

Highlights rich red tones in brunette, mahogany, red & brown hair types.

Highlights rich orange tones in coloured or natural hair types.

Enhances rich violet/blue tones in medium-dark violet brown hair types.

Enhances natural brown tones in coloured or natural hair types.

Highlights violet tones in burgundy, brown & dark brown hair types.

Highlights red/orange tones in brunette, mahogany, red & brown hair types.

Enhances rich chocolate tones in medium & dark brown hair types.

Reduces brassy tones & adds ash brown into all brown hair types.

Highlights the colour of golden blonde, auburn, red & brown hair types.

Enhances rose & violet pastel tones in blonde, white or grey hair types.

Enhances soft beige tones in blonde, white & grey hair types.

# COLOURANCE®

INTERVAL COLOUR REFRESHMENT

**Colourance Interval Colour Refreshment is a colour enhancing range designed to give a more vibrant look for your hair. Builds colour gradually, can be used as a top up between salon visits or daily for a more intense colour. Contains no SLS, Ammonia or Peroxide.**

All kinds available in 250mL



#### ●● DIRECTIONS

Apply to dry hair for an instant intense colour change or use like a regular shampoo. Massage into wet hair to create a lather, leave for 2-3 Minutes for a more intense result, rinse thoroughly. Repeat if desired. Follow with Colourance Shine Enhancing Conditioner and Mask Spray to protect and lock-in colour.

# CURLY BOOST®

WAVY, CURLY, COILY HAIR

## Embrace Naturally Curly Hair.

Curly Boost is a compact range carefully formulated to enhance and embrace naturally curly hair, featuring high quality ingredients to protect and maintain those shiny, soft and luscious curls.

The humectant-binding properties of Hyaluronic Acid help retain the proper balance of lipids and proteins required for healthy hair, providing a smooth and less frizzy appearance.

Curly Boost is also enriched with Quinoa Protein and Australian Native Desert Lime, active ingredients that work in conjunction to provide deep hydration and shine while strengthening hair to promote elasticity.



Discover More



### HYDRATING SHAMPOO

Hyaluronic Acid, Quinoa Protein, Australian Native Desert Lime.



### HYDRATING CONDITIONER

Hyaluronic Acid, Quinoa Protein, Australian Native Desert Lime.



### HYALURONIC CURL ACTIVATOR

Hyaluronic Acid, Quinoa Protein, Australian Native Desert Lime.



#### GENTLE CLEANSER FOR WAVY, CURLY, COILY HAIR

Curly Boost Hydrating Shampoo gently cleanses all wavy, curly and coily hair types. Revitalises and defines curls. Enriched with Hyaluronic Acid for deep hydration, leaving the hair with a frizz-free, weightless bounce. Quinoa Protein and Desert Lime strengthens and protects hair from environmental stress while restoring sheen and helping to prevent colour fade, providing lasting curly style support.

#### ● ● DIRECTIONS

Apply a small amount of Curly Boost Hydrating Shampoo to wet hair. Begin massaging both hair and scalp to create a rich lather, then rinse thoroughly. Repeat if desired. Follow with Curly Boost Hydrating Conditioner and Curly Boost Hyaluronic Curl Activator to create bouncy, defined curls and voluminous styles without stickiness or crunch.

375mL, 1L

#### INSTANT HYDRATION FOR WAVY, CURLY, COILY HAIR

Softens & detangles wavy, curly, coily hair while restoring moisture and shine without weighing curls down. Hyaluronic Acid intensely moisturises and leaves hair with a frizz free weightless bounce, providing lasting curly style support. Quinoa Protein strengthens and protects hair from environmental stress. Desert Lime fortifies the hair and scalp with antioxidants to promote elasticity and shine.

#### ● ●

Apply Curly Boost Hydrating Conditioner following the use of Curly Boost Hydrating Shampoo. Massage and comb through to ends. Rinse thoroughly. Follow with Hyaluronic Curl Activator to create bouncy, defined curls and voluminous styles without stickiness or crunch.

300mL, 1L

#### ANTI-FRIZZ DETANGLING MIST FOR WAVY, CURLY, COILY HAIR

Formulated to soften and define curls, eliminating frizz and providing frictionless control. For bouncy, controlled curls and voluminous styles without stickiness or crunch. Enriched with Hyaluronic Acid and Quinoa Protein to deep moisturise and leave curly hair with a weightless bounce. Desert Lime fortifies the hair and scalp with antioxidants to promote elasticity and shine.

#### ● ●

Cleanse the hair with Curly Boost Hydrating Shampoo and Conditioner. Spray Curly Boost Hyaluronic Curl Activator concentrating on the most porous areas. Use a wide tooth comb to distribute evenly and style as desired.

250mL

# ANTI-FRIZZ®

FRIZZ MAINTENANCE PROGRAM

No more broken ends or frizzy bits.

Are your tresses misbehaving? Anti-Frizz nourishes even the driest strands and gives you total control. Enriched with Jojoba Oil, an excellent moisturiser that improves the hair texture and appearance, conditioning the hair follicles and protecting them against further damage.

Combining Natural Organic ingredients such as Active Botanical Extracts and Shea Butter, Anti-Frizz nourishes the hair shaft from the inside and envelops it to repel frizz-inducing moisture in the air, without weight or greasiness.

- ✓ Smooths kinks, tames unruly fly-aways.
- ✓ Improves manageability.
- ✓ Protects against thermal styling and environmental pressures.



Discover More

**\*Active Botanical Extracts**  
Natural Look Australia's exclusive herbal complex of leaves, flowers, fruit, herbs and roots (Balm Mint, Juniper, Pine Leaf, Gentian, St John Wart, Arnica Montana, Red Clover, Alfalfa).



**ANTI-FRIZZ SHAMPOO**

Jojoba Oil, Wheat Amino Acids, Active Botanical Extracts.

**SMOOTHING CLEANSER  
CONTROLS DRY, FRIZZY HAIR**

Created especially to smooth and cleanse the hair; controlling unwanted frizz and static, providing a lustrous sheen to all hair types. Free from Sodium Laureth Sulphates (SLS) and Parabens.

● ● **DIRECTIONS**

Apply Anti-Frizz Shampoo to wet hair. Massage hair and rinse. Repeat if desired. Follow with Static Free Anti-Frizz Conditioner for maximum protection from frizz and ease when styling.

300mL, 1L



**ANTI-FRIZZ CONDITIONER**

Jojoba Oil, Wheat Amino Acids, Vitamin E, Coconut Oil, Active Botanical Extracts.

**SMOOTH AND SHINE  
CONTROLS DRY, FRIZZY HAIR**

Smooths and protects the hair from unwanted frizz and static. It's an excellent detangler and will enhance sheen in all hair types. Free from Sodium Laureth Sulphates (SLS) and Parabens.

● ●

Cleanse hair with Static Free Anti-Frizz Shampoo, apply conditioner to damp hair and comb through evenly. Leave in hair for 2-5 minutes for maximum protection and rinse thoroughly.

300mL, 1L



**ANTI-FRIZZ RECONSTRUCTIVE MASK**

Shea Butter, Wheat Amino Acids, Jojoba Oil, Vitamin E, Active Botanical Extracts.

**SMOOTHING DEEP TREATMENT**

Provides maximum protection and shine while eliminating frizz and static. Anti-Frizz Reconstructive Mask is a deep penetrating reconstructor for stressed, chemically treated, coloured, dry & sun damaged hair. Free from Sodium Laureth Sulphates (SLS) and Parabens.

● ●

After cleansing the hair with Static Free Anti-Frizz Shampoo, apply the Reconstructive Mask liberally as required. Comb through to ends and leave in for 5-15 minutes for maximum penetration, then rinse. Covering the hair with a towel or the use of steam will improve results.

25mL, 400mL, 1L



# PURIFY®

HAIR & SCALP THERAPY

## ANTI-DANDRUFF TREATMENT

Purify's Anti-Dandruff treatment is a targeted program with Tea Tree Oil, Natural Look Australia's exclusive herbal complex of Botanical Extracts\*, Active Piroctone Olamine and Zinc Pyrithione to prevent and treat dandruff.

### Benefits of using Anti-Dandruff Treatment

- ✓ Prevents the build up of dandruff.
- ✓ Helps relieve the scalp.
- ✓ Moisturises the scalp.



Discover More

### \*Active Botanical Extracts

Natural Look Australia's exclusive herbal complex of leaves, flowers, fruit, herbs and roots (Balm Mint, Juniper, Pine Leaf, Gentian, St John Wart, Arnica Montana, Red Clover, Alfalfa).

## ANTI-DANDRUFF TREATMENT



### EXFOLIATING SCALP SCRUB

Natural Shell Micro Granules, Peppermint Oil, Jojoba Oil.

### PRE-TREATMENT/REMOVES BUILD-UP, IMPURITIES, OILINESS & DANDRUFF

Pre-shampoo scalp treatment to purify and detoxify your scalp. Removes product build-up, dirt and oil, to relieve dryness, flaking and itching, leaving your scalp feeling clean and fresh. Blended with natural Walnut Shell Powder, cooling Peppermint and nourishing Jojoba Oil to exfoliate, cleanse and soothe the scalp, promoting healthy hair growth. Primes the hair and scalp for all Purify Treatments: Anti-Hair-Loss, Anti-Dandruff and Sebum Balancing.

### DIRECTIONS

Apply before shampooing to damp, towel-dried hair. Section the hair and apply Purify Exfoliating Scalp Scrub to the centre of the scalp massaging in a circular motion for 3-4 minutes. Repeat all over until scalp is covered. Rinse and follow with Purify Shampoo. Use once or twice weekly.

125mL

### ANTI-DANDRUFF SHAMPOO

Zinc Pyrithione, Quinoa Protein, Active Botanical Extracts.

### TREATS, CLEANSES AND MOISTURISES HAIR AND SCALP FOR ALL HAIR TYPES / COOLING FORMULA

Anti-Dandruff Shampoo gently cleanses all hair types while controlling the irritating effects of heavy or persistent dandruff. Contains Piroctone Olamine, an ingredient clinically proven to relieve the itching and flaking of the scalp. **Purify Hair & Scalp Conditioner** restores the hair & scalps natural pH level with it's dual feature of moisturising and neutralising any unwanted alkaline or acidic residues. A cooling formula enriched with Quinoa Protein and Active Botanical Extracts.

### DIRECTIONS

Apply a small amount of Purify Anti-Dandruff Shampoo to hair and scalp massaging firmly. Rinse well and repeat if necessary. Leave second lather in the hair for 1-2 minutes to maximise effects. Use at least twice a week until dandruff is controlled.

Follow with Purify Hair and Scalp Conditioner.

Shampoo 375mL, 1L | Conditioner 300mL, 1L

### ANTI-DANDRUFF CONCENTRATED TREATMENT VIALS

Tea Tree Leaf Oil, Piroctone Olamine, Urtica Dioica (Nettle) Extract, Active Botanical Extracts.

### ELIMINATES, PREVENTS & HYDRATES

Anti-Dandruff Concentrated Treatment is formulated to gently cleanse the scalp while controlling the irritating effects of heavy or persistent dandruff. Contains Piroctone Olamine, Nettle Extract and Tea Tree Oil to help relieve itching and flaking providing a healthy scalp and re-nourished hair.

### DIRECTIONS

After cleansing the hair with Purify Anti-Dandruff Shampoo, massage the contents of one vial evenly over the scalp for at least three minutes and then comb hair as usual. Do not rinse. We recommend applying and massaging the lotion twice a week on damp hair for at least three weeks for an intense treatment, then reducing to once a week.

10mL x 12 Vials

### HAIR & SCALP BIO-TONIC

Biotin, Vitamin F, Tea Tree Oil, Lavender, Camomile.

### TREATS, SOOTHES AND CLEANSES DANDRUFF, OILINESS, ITCHY SCALP OR HAIR LOSS

Specially formulated to help in the reduction and control of flakiness, oiliness, dandruff and an itchy scalp. With Biotin to stimulate keratin production, Seaweed Extract, Lavender and Tea Tree, to cleanse and invigorate, improving blood circulation. The addition of Camomile soothes and protects the natural pH balance of the skin.

### DIRECTIONS

Following the cleansing and conditioning of the hair with Purify Anti-Dandruff regime, spray Hair & Scalp Bio-Tonic evenly on towel dried hair, then begin massaging the scalp gently for a few minutes. Leave-in, style as desired. Initial usage: daily until results are achieved. Maintenance: 1-2 times per week.

250mL



# PURIFY®

## HAIR & SCALP THERAPY

### ANTI-HAIR LOSS TREATMENT

Purify's Anti-Hair Loss treatment is a targeted program with Tea Tree Oil and Natural Look Australia's exclusive herbal complex of Botanical extracts to prevent and treat hair loss with visible results in just 8 weeks\*.

#### Benefits of using Anti-Hair Loss Treatment

- ✓ Prevents the weakening of the hair shaft.
- ✓ Stimulates the hair bulb action.
- ✓ Protects the scalp.



\*Dermatologically tested by the University of Pavia on male and female volunteers aged between 24 and 65 years.



#### EXFOLIATING SCALP SCRUB

Natural Shell Micro Granules, Peppermint Oil, Jojoba Oil, Bambo Extract.

#### REMOVES BUILD-UP, IMPURITIES, OILINESS & DANDRUFF NATURAL MICRO-GRANULES

Pre-shampoo scalp treatment to purify and detoxify your scalp, Removes product build-up, dirt and oil, to relieve dryness, flaking and itching, leaving your scalp feeling clean and fresh. Blended with natural Walnut Shell Powder, cooling Peppermint and nourishing Jojoba Oil to exfoliate, cleanse and soothe the scalp, promoting healthy hair growth. Primes the hair and scalp for all Purify Treatments: Anti-Hair-Loss, Anti-Dandruff and Clarifying.

#### ●● DIRECTIONS

Apply before shampooing to damp, towel-dried hair. Section the hair and apply Purify Exfoliating Scalp Scrub to the centre of the scalp massaging in a circular motion for 3-4 minutes. Repeat all over until scalp is covered. Rinse and follow with PURIFY Shampoo. Use once or twice weekly.

125mL

#### ANTI-HAIR LOSS SHAMPOO

Biotin, Quinoa Protein, Active Botanical Extracts.

#### GENTLE CLEANSING FOR FINE, THINNING HAIR / SLS FREE / FOR ALL HAIR TYPES / COOLING FORMULA

Anti Hair Loss Shampoo gently cleanses the skin surface around the delicate hair follicle, while promoting healthy hair growth. The potent blend of active ingredients stimulate the hair follicles, to strengthen the hair and help to stop premature hair loss. **Purify Hair & Scalp Conditioner** restores the hair & scalps natural pH level with it's dual feature of moisturising and neutralising any unwanted alkaline or acidic residues. A cooling formula enriched with Menthol and Botanical Extracts.

#### ●●

Apply to wet hair. Massage into hair and scalp for minimum of 1 minute. Rinse thoroughly and repeat if required. It's recommended using the shampoo twice a week for 6 to 12 weeks for best results.

Follow with Purify Hair and Scalp Conditioner.

Shampoo 250mL, 500mL, 1L | Conditioner 300mL, 1L

#### ANTI-HAIR LOSS CONCENTRATED TREATMENT VIALS

Arnica Montana, Capsicum Frutescens, Tea Tree Leaf Oil, Active Botanical Extracts.

#### STIMULATING HAIR GROWTH COMPLEX\*, PREVENTS, STRENGTHENS & PROTECTS

\*Our exclusive hair growth complex combines Tea Tree Oil and a blend of Active Botanical Extracts including powerful regenerating Arnica Montana and Capsicum Fruit Extract to fight hair loss from the very first application. Purify Anti-Hair Loss Concentrated Treatment gently cleanses the skin surface around the hair follicle, while promoting healthy hair re-growth.

#### ●●

After cleansing the hair with Purify Anti-Hair Loss Shampoo, massage the contents of one vial evenly over the scalp for at least three minutes and then comb hair as usual. Do not rinse. We recommend applying and massaging the lotion twice a week on damp hair for 6-12 weeks.

10mL x 12 Vials

#### ANTI-HAIR LOSS SERUM

Arnica Montana, Capsicum Frutescens, Tea Tree Leaf Oil, Active Botanical Extracts.

#### STIMULATING HAIR GROWTH COMPLEX\*, PROMOTES HEALTHY HAIR GROWTH

\*Our exclusive hair growth complex combines Tea Tree Oil and a blend of Active Botanical Extracts including powerful regenerating Arnica Montana and Capsicum Fruit Extract to fight hair loss from the very first application.

The potent blend of active ingredients stimulates the hair follicles, which will strengthen the hair and help in the prevention of it falling out prematurely.

After cleansing the hair with Purify Anti-Hair Loss Shampoo, apply a few drops of Anti-Hair Loss Serum to the scalp. Massage gently for 1-2 minutes throughout. Do not rinse. Comb and dry. We recommend applying and massaging the serum twice a week on damp hair for 6-12 weeks.

50mL

#### HAIR & SCALP BIO-TONIC

Biotin, Vitamin F, Tea Tree Oil, Lavender, Seaweed Extract, Camomile, Active Botanical Extracts.

#### TREATS, SOOTHES AND CLEANSSES DANDRUFF, OILINESS, ITCHY SCALP OR HAIR LOSS

Specially formulated to help in the reduction and control of flakiness, oiliness, dandruff and an itchy scalp. With Biotin to stimulate Keratin production, Seaweed Extract, Lavender and Tea Tree, to cleanse and invigorate, improving blood circulation. The addition of Camomile soothes and protects the natural pH balance of the skin.

#### ●●

Following the cleansing and conditioning of the hair with Purify Anti-Hair Loss regime, spray Hair & Scalp Bio-Tonic evenly on towel dried hair, then begin massaging the scalp gently for a few minutes. On completion do not rinse, style as desired. Initial usage: daily until results are achieved. Maintenance: 1-2 times per week.

250mL

## ANTI-HAIR LOSS TREATMENT

# PURIFY®

HAIR & SCALP THERAPY

## SEBUM BALANCING TREATMENT

Purify's Scalp Care treatment is a targeted program with Tea Tree Oil and Natural Look Australia's exclusive herbal complex of Botanical extracts to eliminate excess sebum and restore the balance of your scalp.

### Benefits of using Sebum Balancing Treatment:

- ✓ Purifies the scalp.
- ✓ Normalizes excessive sebum secretion
- ✓ Improves the microcirculation.



Discover More

### \*Active Botanical Extracts

Natural Look Australia's exclusive herbal complex of leaves, flowers, fruit, herbs and roots (Balm Mint, Juniper, Pine Leaf, Gentian, St John Wart, Arnica Montana, Red Clover, Alfalfa).

## SEBUM BALANCING TREATMENT



### EXFOLIATING SCALP SCRUB

Natural Shell Micro Granules, Peppermint Oil, Jojoba Oil, Bambo Extract.

### REMOVES BUILD-UP, IMPURITIES, OILINESS & DANDRUFF NATURAL MICRO-GRANULES

Pre-shampoo scalp treatment to purify and detoxify your scalp, Removes product build-up, dirt and oil, to relieve dryness, flaking and itching, leaving your scalp feeling clean and fresh. Blended with natural Walnut Shell Powder, cooling Peppermint and nourishing Jojoba Oil to exfoliate, cleanse and soothe the scalp, promoting healthy hair growth. Primes the hair and scalp for all Purify Treatments: Anti-Hair-Loss, Anti-Dandruff and Clarifying.

### ●● DIRECTIONS

Apply before shampooing to damp, towel-dried hair. Section the hair and apply Purify Exfoliating Scalp Scrub to the centre of the scalp massaging in a circular motion for 3-4 minutes. Repeat all over until scalp is covered. Rinse and follow with PURIFY Shampoo. Use once or twice weekly.

125mL

### CLARIFYING SHAMPOO

Quinoa Protein, Active Botanical Extracts.

### DEEP CLEANSING AND REMOVAL OF BUILD UP, IMPURITIES OR OILINESS

Clarifying Shampoo is especially designed with Quinoa Protein as an oil free cleanser to gently remove accumulated deposits and build up on all hair types. It will remove deposits of chlorine, chemicals, hard water minerals and medications all of which can create troublesome obstacles when colouring, straightening and perming.

### ●● DIRECTIONS

Apply a small amount of Clarifying Shampoo to wet hair, massaging lightly to achieve a rich lather. Leave for 1-2 minutes for maximum effect, rinse thoroughly. Alternate Clarifying Shampoo with your regular Natural Look Shampoo 1-2 times weekly.

375mL, 1L

### HAIR AND SCALP CONDITIONER

Quinoa Protein, Active Botanical Extracts, Menthol.

### FINISHING RINSE FOR DANDRUFF, OILINESS, ITCHY SCALP OR HAIR LOSS • LOW PH • COOLING FORMULA

Purify Conditioner has been especially designed to restore the hair & scalps natural pH level with it's dual feature of moisturising and neutralising any unwanted alkaline or acidic residues. The Quinoa Protein helps build keratin and strengthen the hair while the botanical extracts and menthol cools and conditions thus reducing tangles and leaving the hair smooth shiny and more manageable.

### ●●

Following the cleansing of the hair with Purify Clarifying Shampoo apply an adequate amount of Purify Conditioner, as required by the degree of need or the hairs length. Massage gently through hair and scalp, then comb evenly throughout hair, leaving for approximately 1-2 minutes for maximum effect. On completion rinse thoroughly and style as desired.

300mL, 1L

### HAIR & SCALP BIO-TONIC

Biotin, Vitamin F, Tea Tree Oil, Lavender, Seaweed Extract, Camomile, Active Botanical Extracts.

### TREATS, SOOTHES AND CLEANSES DANDRUFF, OILINESS, ITCHY SCALP OR HAIR LOSS

Specially formulated to help in the reduction and control of flakiness, oiliness, dandruff and an itchy scalp. With Biotin to stimulate Keratin production, Seaweed Extract, Lavender and Tea Tree, to cleanse and invigorate, improving blood circulation. The addition of Camomile soothes and protects the natural pH balance of the skin.

### ●●

Following the cleansing and conditioning of the hair with Purify Clarifying regime, spray Hair & Scalp Bio-Tonic evenly on towel dried hair, then begin massaging the scalp gently for a few minutes. On completion do not rinse, style as desired. Initial usage: daily until results are achieved. Maintenance: 1-2 times per week.

250mL



# DAILY<sup>®</sup>

## HERBAL EXTRACTS

Gently maintain healthy, shiny hair.

Do you need to wash your hair every day? Daily Herbal range naturally removes impurities and conditions your hair without drying it out.

Daily's lightweight and non-oily formula gently cleanses, conditions and protects to keep all hair types soft and moisturised.

Enriched with Active Botanical Extracts\*, Daily delivers a beautiful healthy finish to your hair, whilst adding body and improving manageability. Daily is non-irritating and designed for use on sensitive skin.



Discover More

### \*Active Botanical Extracts

Natural Look Australia's exclusive herbal complex of leaves, flowers, fruit, herbs and roots (Balm Mint, Juniper, Pine Leaf, Gentian, St John Wart, Arnica Montana, Red Clover, Alfalfa).



### HERBAL SHAMPOO

Cocamide Dea (Derived From Coconut Oil), Wheat Protein, Active Botanical Extracts.

#### FOR REGULAR GENTLE CLEANSING OF ALL HAIR TYPES

Gently cleanses all hair types with a particular emphasis on hair that is cleansed and blow dried regularly. Contains Natural Herbal Extracts and Wheat Protein to help in restoring and maintaining the lustre found in healthy hair, while adding body and improving overall manageability. Light weight and non-oily.

#### ● ● DIRECTIONS

Apply a small amount of Daily Herbal Shampoo to wet hair, massaging lightly to achieve a rich lather. Rinse well and repeat if necessary.

375mL, 1L, 5L



### HERBAL CONDITIONER

Cetearyl Alcohol (Derived from Coconut Oil), Wheat Protein, Active Botanical Extracts.

#### FOR REGULAR GENTLE CONDITIONING OF ALL HAIR TYPES

Conditions and protects all hair types from the rigours of regular cleansing and thermal styling. Contains Natural Herbal Extracts and Wheat Protein to help in restoring and maintaining the lustre found in healthy hair while adding body and improving overall manageability. Light weight and non-oily.



After cleansing the hair with Daily Herbal Shampoo, apply an adequate amount of Conditioner as required by the degree of need and the hairs length. Use a wide tooth comb to distribute evenly throughout hair, leaving for approximately 1-2 minutes for maximum penetration. On completion rinse thoroughly and style as desired.

300mL, 1L, 5L



### DRY SHAMPOO

Rice Powder, Bamboo Leaf Extract, Starch (Plant Derived), Propellant: Hydrocarbon

#### REFRESH HAIR BETWEEN WASHES WITH BAMBOO LEAF EXTRACT

Dry Shampoo is a waterless cleanser that contains softening, protective, Bamboo Leaf Extract and natural micronised powders with intense oil absorbing properties, to clean the hair without the need for water. Leaves the hair feeling clean and full of body. Ideal for busy people and those wanting to extend the life of their hair style. Can be used as often as required. Simply spray on and brush out.



Spray evenly approximately 30cm from the hair. Leave for 2 minutes and brush out residue from the hair thoroughly.

175g



# EXPAND<sup>®</sup>

INCREASED VOLUME

Bring flat, limp hair to new heights.

Is your hair desperate for a lift? Achieve greater volume and texture without fly-aways by using Expand Volumising range.

Expand contains Witch Hazel to stimulate hair growth and create volume, fullness and sheen in all hair types, especially fine textures, without adding weight.

Expand's lightweight mix of Active Botanical Extracts\* and Wheat Proteins thoroughly cleanses, deeply moisturises and effectively lifts your hair. Expand will leave hair feeling soft, strong and full of body.



Discover More

**\*Active Botanical Extracts**

Natural Look Australia's exclusive herbal complex of leaves, flowers, fruit, herbs and roots (Balm Mint, Juniper, Pine Leaf, Gentian, St John Wart, Arnica Montana, Red Clover, Alfalfa).



## VOLUMIZING SHAMPOO

Witch Hazel, Wheat Protein, Active Botanical Extracts.

### INCREASED VOLUME FOR ALL HAIR TYPES

Designed with organic ingredients to provide increased volume in all hair types especially fine hair, through its unique formulation containing rich Mint, exotic Sandalwood, an aromatic blend of Herbal Extracts, Pro-Vitamins and Wheat Protein to gently cleanse the hair imparting strength, body and a feeling of vitality to both the hair and scalp.

● ● **DIRECTIONS**

Apply a small amount of Expand Volumizing shampoo to wet hair, massaging lightly to achieve a rich lather. Rinse well and repeat if necessary.

375mL, 1L



## VOLUMIZING CONDITIONER

Wheat Amino Acids, Vitamin E, Pro-Vitamins, Active Botanical Extracts.

### INCREASED VOLUME AND SHEEN FOR ALL HAIR TYPES

Provides increased volume and sheen in all hair types especially fine hair. Contains exotic, rich Mint, exotic Sandalwood, an aromatic blend of Herbal Extracts, Pro-Vitamins and Wheat Protein to impart strength, body and a feeling of vitality to both the hair and scalp leaving it shiny and voluminous.

● ●

Following the cleansing of the hair with Expand Volumizing Shampoo apply an adequate amount of Volumizing Conditioner as required. Using a wide tooth comb distribute evenly throughout hair, leaving for approximately 1-2 minutes for maximum penetration. Rinse thoroughly, style as desired.

300mL, 1L



## VOLUMIZING LEAVE-IN TREATMENT

Witch Hazel, Wheat Protein, Vitamin E, Vitamin F, Active Botanical Extracts.

### CREATES VOLUME, FULLNESS AND SHEEN FOR ALL HAIR TYPES

Strengthens and thickens the hair's internal structure through its unique formulation. Containing Witch Hazel, Herbal Extracts, Pro-Vitamins and Wheat Protein, Expand Volumizing Leave-In Treatment will create volume, fullness and sheen in the hair without weighing it down. Expand Leave-in Treatment will revitalise and protect the hair while improving overall manageability.

● ●

Following the cleansing and conditioning of the hair with Expand Volumizing Shampoo and Conditioner, spray a liberal amount of expand Volumizing Treatment on to towel dried hair, comb through for even distribution. Leave-in.

250mL



## NATURAL LOOK AUSTRALIA HAIR & BEAUTY CARE

Natural Look Australia is Artav Australia's most influential brand and represents the best of our mission: to deliver the purest, high quality standard products, to be environmentally safe and cruelty free, at competitive prices, globally.

Natural Look Australia's passion and dedication is to create ranges with naturally derived bases that deliver quality beauty and hair care solutions along with the best service and support for salons, clients and businesses. This process includes a global network of distributors based over 20 countries worldwide.

### **Artav Australia's story started in Adelaide, Australia, in the 1950s.**

Started in the 1950s by qualified hairdresser and beautician Arturo Taverna with a salon in the city of Adelaide - developing into a group of 30 salons throughout South Australia - Artav Australia is now firmly established as a respected manufacturer and supplier of professional hair care and beauty products developed to a consistently high standard, following a natural approach and a strong sustainability commitment.

From its inception as market-leading salons in the city of Adelaide to the successful business it is today, Artav Australia has continued to remain a proudly Australian, family owned and run company, continuing to expand its Adelaide-based business with a emphasis on protecting the environment.

## NATURAL LOOK H A I R

- Cleanse, Condition & Care
- Treatments
- Interval Colour Refreshments
- Professional Colour
- Styling
- Hair Extensions Care
- Anti-Lice
- Earth Friendly Hair Tools
- Professional Support

## NATURAL LOOK B E A U T Y

- Body Treatments
- Professional & Self-Tanning
- Waxing
- Pre & Post Hair Removal
- Pedicure
- Manicure
- Skin Care
- Paraffin Treatments
- Ear Piercing



## NATURAL LOOK ETHOS

Natural Look Australia is committed to reducing our effect on the environment. We believe that the future of sustainable hair care begins with the careful selection of pure ingredients, which include:

- ✓ Natural
- ✓ Organic
- ✓ Plant-Based
- ✓ Certified Organic
- ✓ Sustainably Farmed and Sourced

**As a family-operated business, we will ensure that Arturo Taverna's vision is passed on to the generations to come. Our goal is to create products that our customers love, which won't harm our environment.**



Natural Look has a proud history of being a South Australian owned and operated company, bringing with them over 60 years of industry knowledge and experience in hair care and beauty treatments.

Started in the early 1950s by qualified hairdresser and beautician Arturo Taverna with market-leading salons in the city of Adelaide, Australia, the business has grown to what it is today and is still family owned and run.



Natural Look products are made with natural, organic plant-based ingredients without the use of Parabens or Sodium Lauryl Sulphate (SLS) and they are formulated using only the finest ingredients including Pro-Vitamins, Quality Herbal Extracts and Essential Oils, making them not only a sheer pleasure to use but also sure to give results that will delight.



Natural Look believes that all life is precious. That's why we are against any form of animal testing and all Natural Look products are totally cruelty free, because innocent animals should never pay the price for our beauty and feeling good.

Natural Look do not use any animal derived ingredients in the manufacture of its products. The complete range is proudly cruelty free and vegan friendly.



Natural Look Australia is committed to reducing our impact on the environment. In 2020 we initiated a Clean Energy Project, installing a 200kW Solar System, powering through 4 Invertors. Natural Look premises now proudly houses 600 Solar Panels to capitalize on the greatest, most sustainable energy resource on the planet, sunlight, providing the company with between 50-80% of its daily consumption of energy from renewable clean sources, greatly reducing our carbon footprint and in turn our overall impact on the environment.

## NATURAL LOOK SUSTAINABLE



As members of the Australian Packaging Covenant Organisation (APCO) we collaborate with Government and industry organisations about sustainable initiatives for our industry.



**We take great pride in contributing to more sustainable practices and recovery of packaging. We are actively working on environmentally friendly designs and reducing our carbon footprint, including the usage of packaging made of recycled materials or post consumer resin (PCR).**



# HAIRFOOD<sup>®</sup>

CLEANSE • CONDITION • CARE



ARTAV AUSTRALIA

575 South Road, Regency Park, 5010, SA | Free call (Aust): 1800 805 276 • Tel (Int): +61 8 8300 1999 | [naturallook.com.au](http://naturallook.com.au)

VEGAN / MADE IN AUSTRALIA

This brochure is made from recycled materials and paper sourced from renewable plantations.