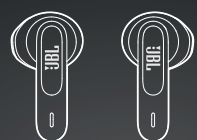
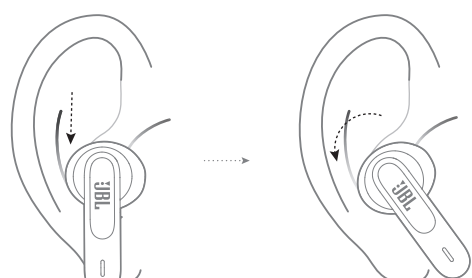


GUIDA RAPIDA D'USO

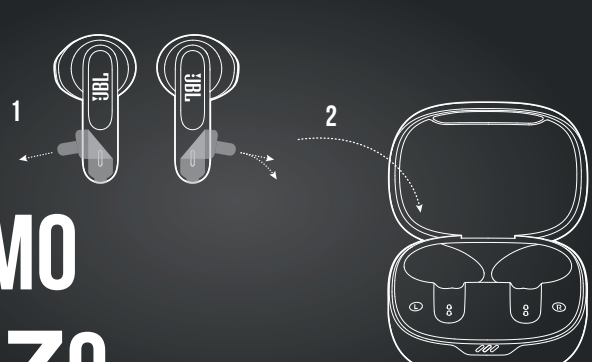
CONTENUTO DELLA CONFEZIONE



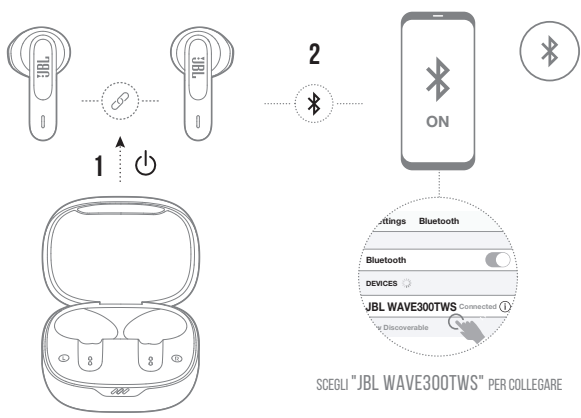
COME INDOSSARLI



AL PRIMO UTILIZZO

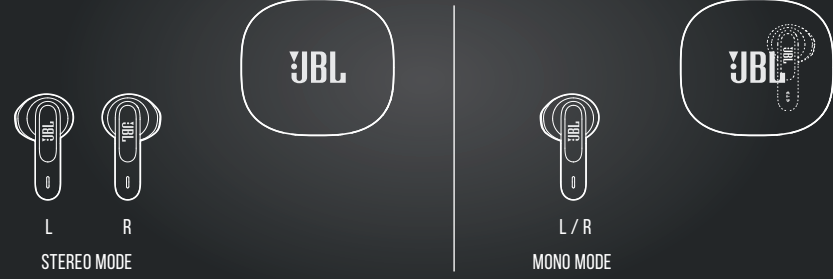


ACCENSIONE E COLLEGAMENTO



SCEGLI "JBL WAVE300TWS" PER COLLEGARE

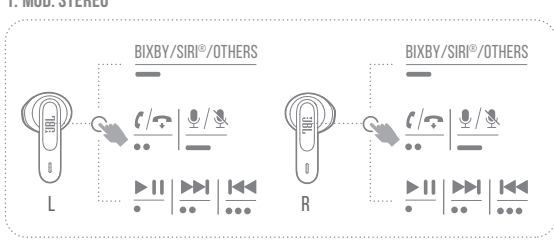
DUAL CONNECT



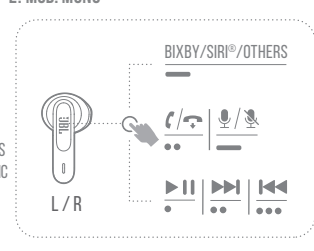
CONTROLLI

- TOCCA x 1
- TOCCA x 2
- TOCCA x 3
- TIENI (2s)

1. MOD. STEREO

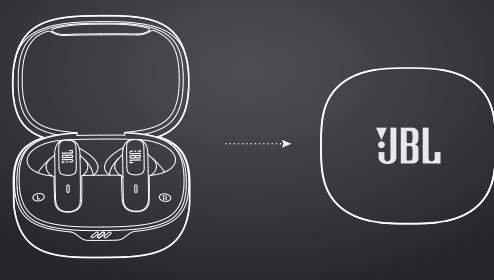


2. MOD. MONO



SEAMLESS AUTOMATIC SWITCH

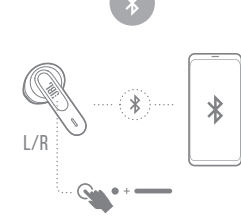
SPEGNIMENTO



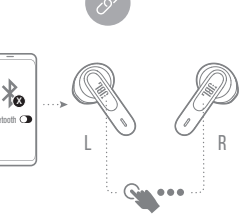
CONFIG. MANUALE

- TOCCA x 1
- TOCCA x 2
- TOCCA x 3
- TIENI (5s)

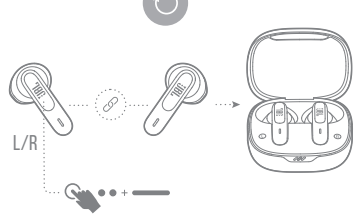
COLLEGA AD UN NUOVO DISPOSITIVO BT



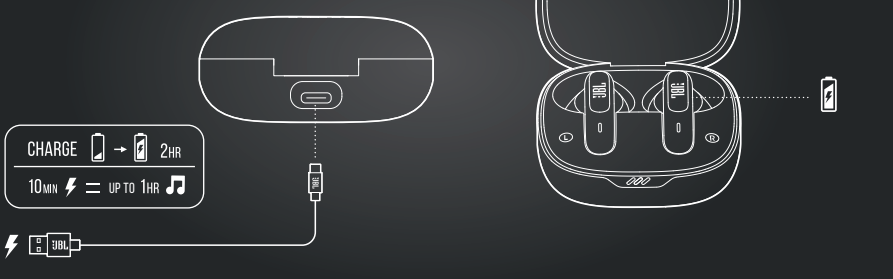
RICOLLEGA SIN. & DEST.



RESET

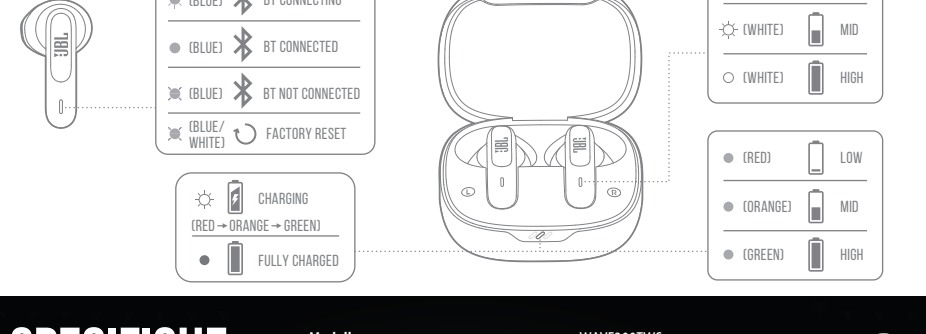


RICARICA



CHARGE 10MIN → 2HR
10MIN ⚡ = UP TO 1HR 🎵

COMPORTEMENTO LED



SPECIFICHE TECNICHE

Modello: WAVE300TWS
Dimensione del driver: Driver dinamico da 12 mm / 0,47"
Alimentazione: 5V = 1A
Auricolari: 3,85 g per pz (7,7 g combinato) / 0,009 lb per pz (0,017 lb combinato)
 36 g / 0,079 lbs
Custodia di ricarica: Polimero agli ioni di litio (40 mAh/3,85 V)
Tipo di batteria degli auricolari: Polimero agli ioni di litio (550 mAh/3,8 V)
Tempo di ricarica: < 2 ore da scarichi
Autonomia in riproduzione con BT attivo: fino a 6 ore
Risposta in frequenza: 20 Hz – 20 kHz
Impedenza: 32 ohm
Sensibilità: 105 dB SPL@1 kHz
SPL massimo: 95 dB
Sensibilità del microfono: -38±2 dBV/Pa@1 kHz
Versione Bluetooth: 5.2
Versione profilo Bluetooth: HSP, HFP, HFP V1.7
Intervallo di frequenza del trasmettitore Bluetooth: 2.4 GHz - 2.4835 GHz
Potenza del trasmettitore Bluetooth: <12 dBm
Modulazione del trasmettitore Bluetooth: GFSK, π/4-DQPSK, 8-DPSK
Temperatura d'esercizio massima: 45 °C



