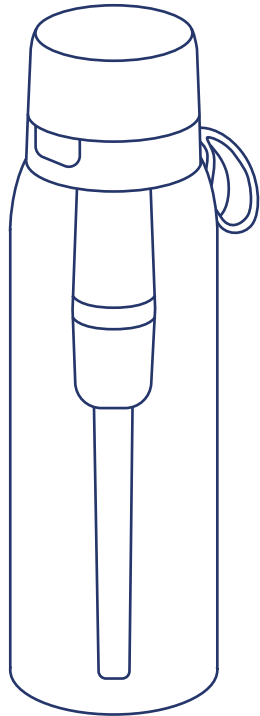




Ultra Water Filter Bottle



IMPORTANT - Read Before Use

1. Activate the filter element by immersing it in water for 2 minutes before use.
2. Depending on the water quality in your area, we recommend replacing the filter every 2-3 months.
3. When tightening the lid, avoid filling the container with water to its maximum capacity to prevent overflow.
4. When cleaning the cup body, please use a soft sponge and avoid detergent.
5. When using the filter to drink water, it is recommended not to exceed 60°C to prevent scalding.
6. Cool or room temperature water is recommended for prolonged filter life.
7. The product is sealed at the factory, so it is normal to experience a slight smell when first opened.
8. For product maintenance or replacement filter elements, please contact customer service.

Store the cartridge in the fridge if not using it for more than 1 week

1. Clean and gently shake out the remaining water inside, then dry it in a cool place.
 2. Wrap the filter cartridge in a plastic bag or film. Storing the filter cartridge in refrigerator will avoid blockages and bacteria forming.
- Do not place in the freezer, as this may break the unit.
 - Do not place acidic substances, to avoid corroding the product.
 - Do not add boiling water or microwave, to avoid deforming of the cup body.
 - Do not use steel wire, corrosive liquid cleaning products, or any chemicals that may damage the unit.
 - Do not filter juice to avoid blocking the filter.

Our Ultra Water Filter Bottle Cartridges

Urban Filter Cartridge



Perfect for:
Urban settings with municipal tap water

Removes:

- Suspended solids like sand, dust and rust
- Residual water pollutants
- Chlorine and chloramine
- Copper, lead, aluminium, cadmium, and mercury
- Bad taste, odor & water harshness

Nature Filter Cartridge



Perfect for:
Nature settings with lake, creek & spring water

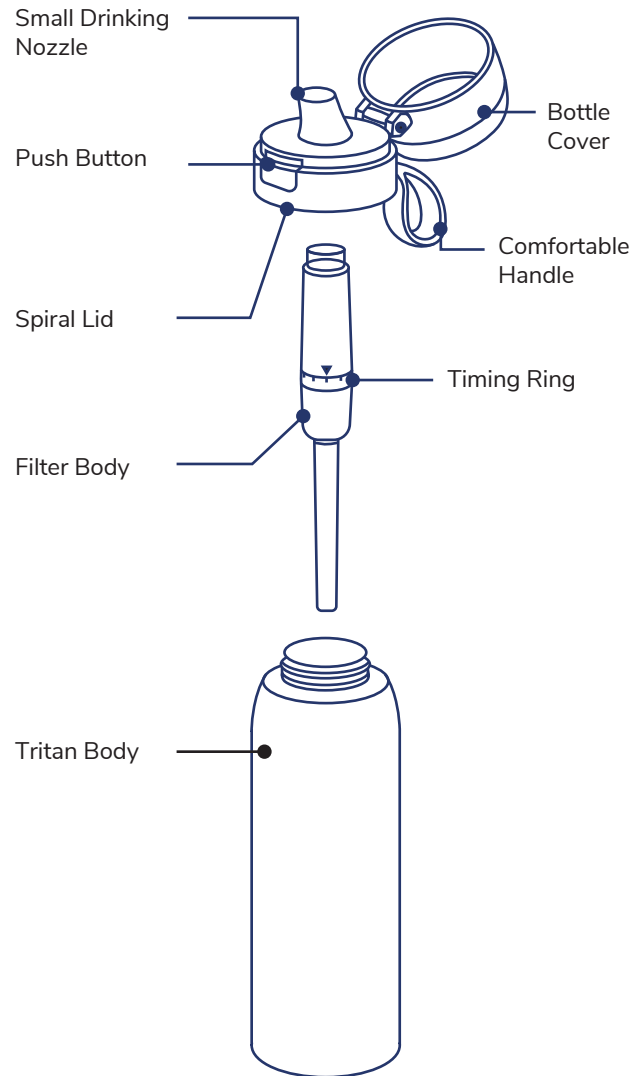
Removes:

- **Bacteria & viruses**
- Suspended solids like sand, dust and rust
- Residual water pollutants
- Chlorine and chloramine
- Copper, lead, aluminium, cadmium, and mercury
- Bad taste, odor & water harshness

Make Your Water Earthly.

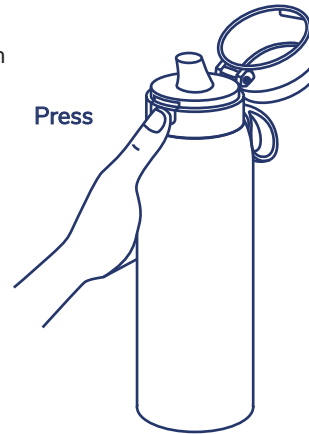
EARTHWATER.COM

Part Details



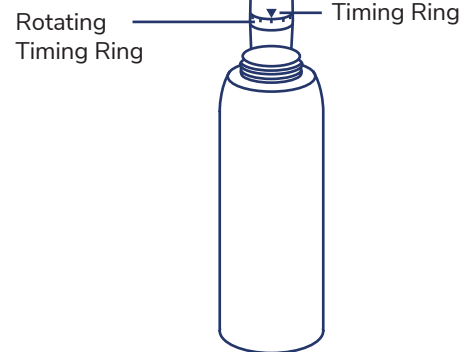
How to Use

One hand opening function makes drinking on the go easy. Suitable for walking, sports, office, school, hiking.



Filter Reminder / Timing Ring

Turn counter-clockwise and unscrew



When replacing the cartridge, adjust the ring so that the number is aligned with the current month. This will help you track when the filter should be replaced.

Add Water



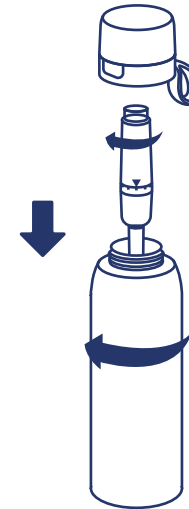
Remove lid and filter, then add water. Careful not to fill to avoid spilling when filter is added.

Filter Replacement

1. Open Bottle

Step 2
Rotate 90° clockwise and pull out downward

Step 1
Turn clockwise to unscrew the base



2. Remove old cartridge 3. Add new cartridge

The silicone ring is upward, cannot be reversed

Step 2
Pull out the cartridge downward

Step 1
Rotate 90° clockwise and pull out downward

Step 1
Push it up to the end

Step 2
Align first, then rotate 90° counter-clockwise upwards

