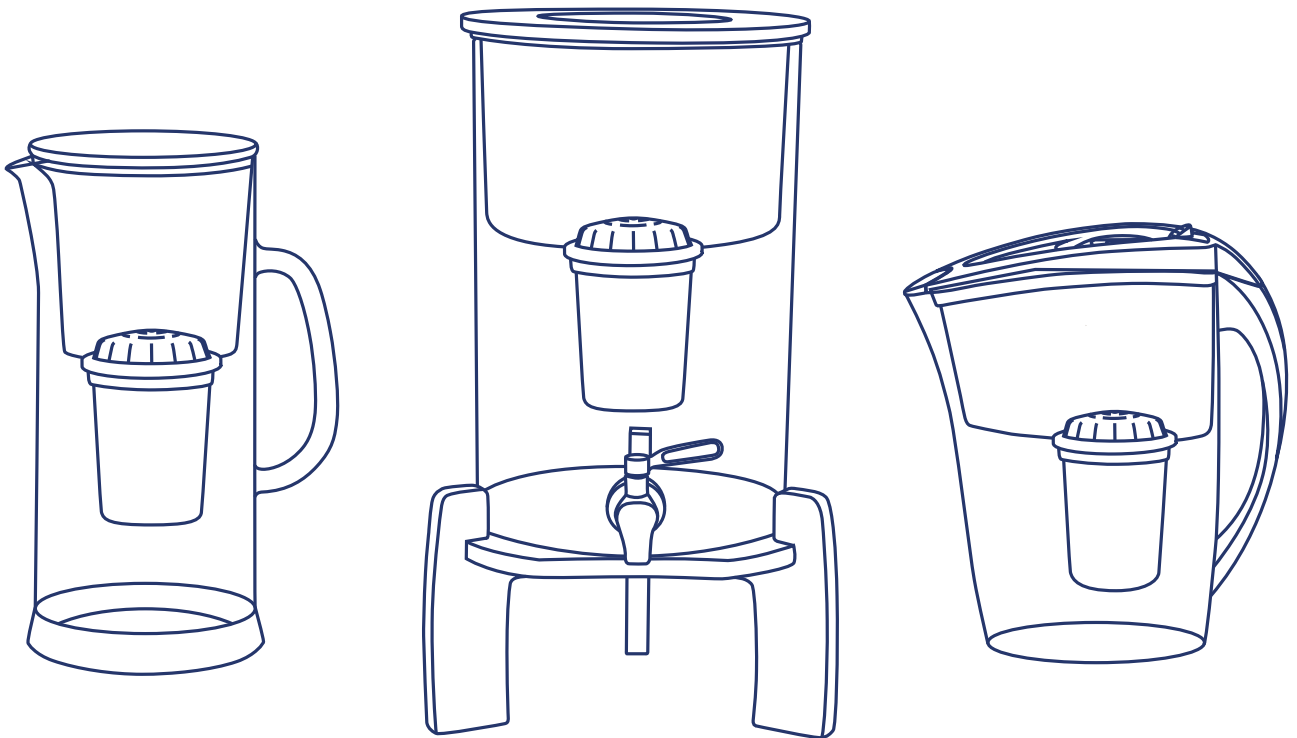




Earth's
WATER

Alkaline Water Filters



Make Your Water Earthly.

[EARTHSWATER.COM](https://earthswater.com)

The Human Body Is Made Up of up to 80% Water

Our water filters turn normal tap water into mineralised alkaline water which greatly increases the body's hydration. The higher pH of alkaline water not only neutralises the body's acidity, it keeps the body healthy.

Our filters are specifically designed to eliminate dangerous contaminants and nourish it with all the necessary nutrients to turn them into alkaline water. Our filters are guaranteed to make your water taste silky and truly refreshing.



Remove Up To 98% of Contaminants

Our natural alkaline water system uses a proprietary process to remove up to 98% of contaminants. Our industry leading water filtering process includes the use of natural coconut shell activated carbon & ion exchange resin to remove:

1. Suspended solids like sand, dust, and rust
2. Pesticides and endrin
3. Residual water pollutants
4. Organic contaminants
5. Free radicals
6. Chlorine, chloramine, and fluoride
7. Copper, lead, aluminium, cadmium, and mercury
8. Bad taste and odour
Water harshness

Increase pH Levels, Minerals & Antioxidants

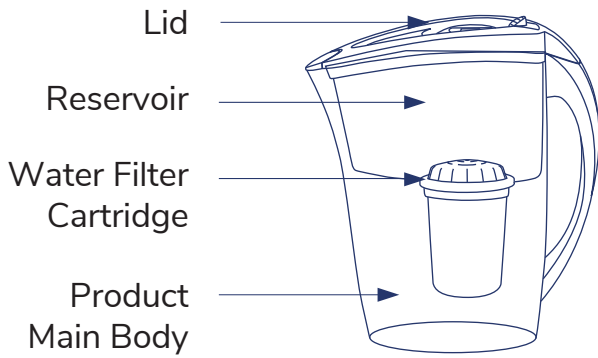
Only the best alkaline water system adds this many health benefits to your everyday drinking water.

Our water filters increase:

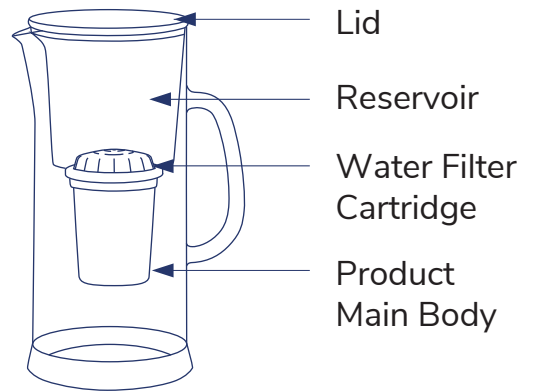
1. pH levels to 7.4-8.5
2. Alkalinity
3. Antioxidants
4. Ionised Water
5. Minerals
6. 20+ trace elements
7. Water taste and smell
8. Water Softness

Product Parts

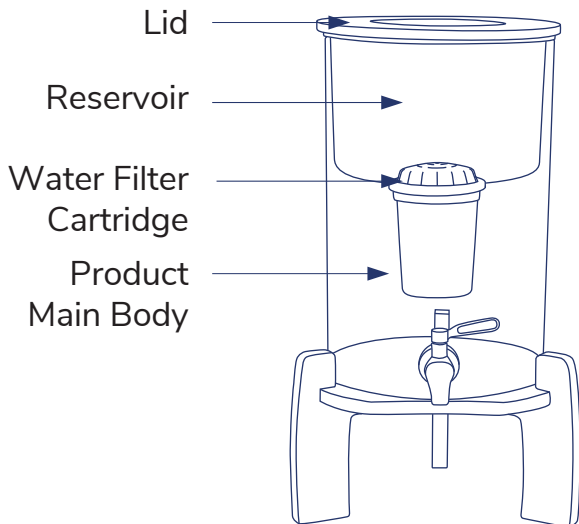
2.4L Water Filter Jug



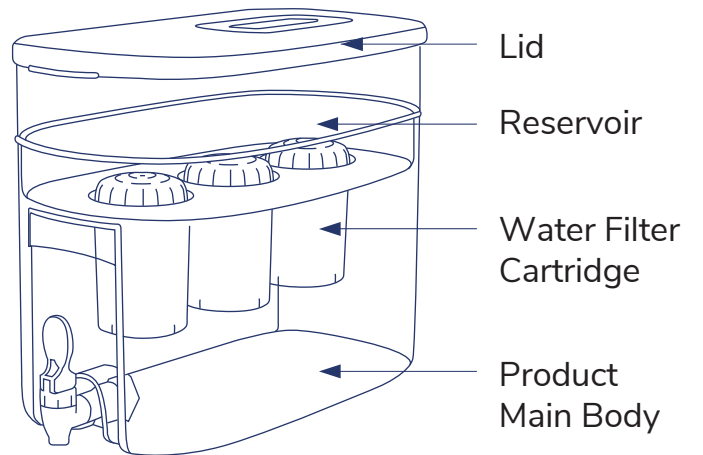
3.5L Glass Carafe Water Filter



9L Glass Benchtop Water Filter



Multi-filter Benchtop Water Filter



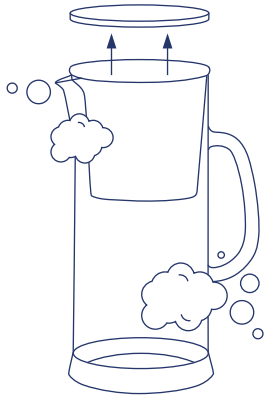
Important Tips for Best Performance

- Always keep enough water in the product body to maintain the bottom of the filter cartridge in the water. This prevents the filter from drying out. If the filter has not been in contact with water for two days, resoak it for ten minutes and reinstall.
- Once a filter cartridge has been removed from its package, it should be installed within two weeks. Using after this period may compromise filtration quality.
- The filter cartridge should always be kept in water. If you are going to be away for a few days, it's best to keep your wet filter in a sealed zip bag, in the fridge.
- If filtered water has been sitting in the product body for several days, discard it and refill the water reservoir.

Caution

- Only place cold or room temperature water into the product for filtering - do not place hot or warm water.
- Always allow all the water in the reservoir to pass through the filter cartridge before adding more water.
- This product is specially designed to filter tap water and bottled water only. Do not put water of unknown quality into the product.
- People with weak immune systems such as babies or the elderly should consult with their medical practitioner before drinking alkaline water.
- People that have been advised by a medical practitioner to boil tap water before consuming it, should continue to boil water and then ensure it has cooled down before placing the water into the product body.
- While the benefits of alkaline water are undeniable, some specific breeds of plants and animals may not do well on alkaline water. We recommend consulting a veterinarian or horticulturist for any concerns.
- Do not apply concentrated cleaning agents like heavy oxidants, bleach, chlorinated solvents, or the like to any part of this product. Do not use abrasive pads on the product.
- This product is NOT dishwasher safe.

How to Set Up & Use



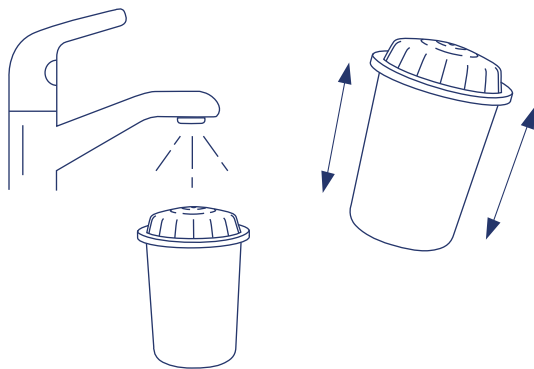
1. Clean Product

Remove the lid with two hands and lift both from the sides. Hand wash the product body, reservoir, and lid with a soft cloth/sponge using a mild liquid soap. Rinse then let dry.



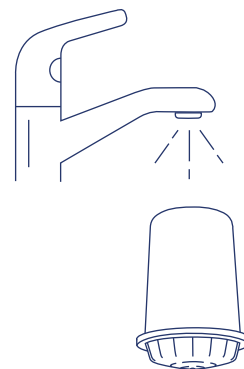
2. Prepare Filter

Wash your hands and remove the filter cartridge from its package. Soak the filter cartridge upright fully submerged in water for ten minutes.



3. Rinse Filter

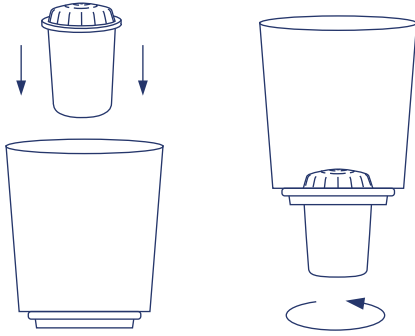
Remove the filter cartridge from the water and hold it under running water for ten seconds. Shake the filter up and down a few times.



4. Rinse Filter Again

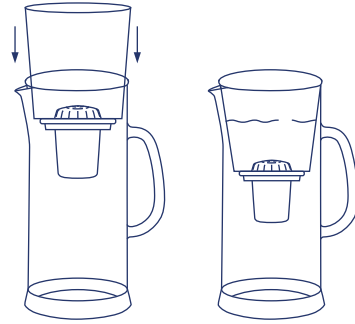
Turn the filter cartridge upside down and hold it under running water again for another ten seconds. Shake the filter up and down a few times.

How to Set Up & Use



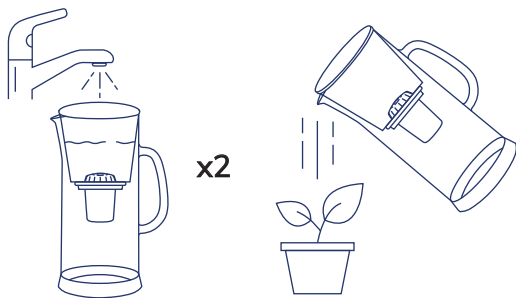
5. Insert Filter

Place the filter cartridge in the reservoir while the reservoir is not in the product main body. While holding the filter cartridge and the reservoir, gently push/twist the filter down from the top of the filter into the reservoir until the top of the filter is almost flush with the inside of the reservoir.



6. Fill Reservoir

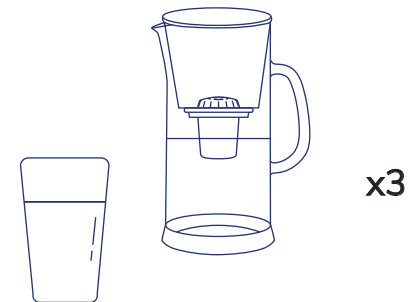
Insert the reservoir & filter into the product main body and ensure it is correctly assembled. Fill the reservoir with cold or room temperature water. You may notice dark or grey water due to elements of dust from the activated carbon. This is completely normal/safe and will clear in the next stages.



x2

7. Discard Water

Once the water has passed through the water filter, discard the water. Repeat this process 2-3 more times. Make sure that you filter 2-3 full reservoirs of water through your new filter cartridge to ensure that any remaining carbon dust is removed before consumption.



x3

8. Final Check

Once the water has passed through the water cartridge for the third time, check your water to ensure it is clear and there is no grey residue. If it is clear, it is now ready to drink. If you see any dust or grey residue, filter more water through the filter cartridge until you get clean, transparent water.