

TABLE OF CONTENTS

[Copyright Notice](#)

[Warnings, Cautions and Notes](#)

[Safety Information](#)

[Dealer Inspection and Service](#)

[Warranty Information](#)

[Basic Setup](#)

[Donning and Adjustment Procedures](#)

[Weight Integration Features](#)

[Inflation Methods](#)

[Deflation Methods](#)

[Special Features](#)

[Pre-Dive Inspection](#)

[Post-Dive Care and Maintenance](#)

[Storage](#)

Pearl





COPYRIGHT NOTICE

This manual is copyrighted, all rights reserved. It may not, in whole or in part, be copied, photocopied, reproduced, translated or reduced to any electronic medium or machine-readable form without prior consent in writing from Aqua Lung. It may not be distributed through the internet or computer bulletin board systems without prior consent in writing from Aqua Lung.

© 2014 Aqua Lung International BC Owner's Manual

Aqua Lung is a registered trademark of Aqua Lung International

WARNINGS, CAUTIONS AND NOTES

Pay special attention to information provided in warnings, cautions and notes that are accompanied by one of these symbols:



WARNINGS: Indicate a procedure or situation that may result in serious injury or death if instructions are not followed correctly.



CAUTIONS: Indicate any situation or technique that will result in potential damage to the product, or render the product unsafe if instructions are not followed correctly.



NOTES: Are used to emphasize important points, tips and reminders.



SAFETY INFORMATION

This manual provides essential instruction for the proper fitting, adjustment, inspection and care of your new BC. Because Aqua Lung BC's utilize patented technology, it is very important to take the time to read these instructions in order to understand and fully enjoy the features that are unique to your specific model. Improper use of this BC could result in serious injury or death.

Before using this buoyancy compensator (BC), you must receive instruction and certification in SCUBA diving and buoyancy control from a recognized training agency. Use of SCUBA equipment by uncertified or untrained persons is dangerous and can result in injury or death.

Read this owner's manual completely before attempting to use your BC, and become familiar with it first in a controlled environment such as a swimming pool, in order to weight yourself properly and to become comfortable with using its many features and adjustments.

Before every dive, perform a complete pre-dive inspection according to the procedure prescribed in this manual, to ensure that all components are functioning properly and no signs of damage or leaks are present. If you find that your BC is not functioning properly or is damaged, remove it from service until it can be repaired by an Authorized Aqua Lung Dealer or Distributor.

Your BC is not a lift bag. **DO NOT** use it to bring heavy objects to the surface. Doing so may cause permanent damage to the BC, and could also result in serious injury or death due to embolism or decompression sickness.

In an emergency such as an out of air situation or uncontrolled descent, it is important to remove and jettison weight immediately. **DO NOT** depend solely on using your BC's power inflator to lift you to the surface.

In the event of an uncontrolled, rapid ascent, it is important to immediately begin venting air from the BC. Continue venting air to slow your ascent rate if neutral buoyancy cannot be reestablished.

DO NOT inhale from your oral inflator. The BC may contain harmful contaminants or gases, which could cause suffocation or injury.



Table of Contents

Factory prescribed service for this BC must be performed at least once annually by a factory trained technician who is employed by an Authorized Aqua Lung Dealer or Distributor. Annual service consists of a complete overhaul of the power inflator, and a general air leak inspection of the bladder and valve connections.

Disassembly, repair, or lubrication must not be attempted by persons who are not factory trained and authorized by Aqua Lung. Unauthorized service will render the warranty null and void.

This BC is designed for use with compressed air or Nitrox/EAN (enriched air nitrox) mixtures not exceeding 40% oxygen. Any use of gas mixtures with increased oxygen content or the addition of helium or other substances may cause corrosion, deterioration and/or premature aging of the BC leading to component failure of the metal and rubber parts. The component failures could lead to a loss of buoyancy control and/or pressure integrity of the BC resulting in injury or death. Non-standard breathing mixtures may also present a risk of fire or explosion. The use of Nitrox/EAN requires additional training. Failure to observe this warning may result in injury or death. Use only nitrogen/oxygen mixtures containing no more than 40% oxygen.

CE Conformity - This BC conforms to EN 1809: 1997.

It was controlled by the l'Institut National de Plongée Professionnelle, organisme notifié n°0078, entrée n°3 port de la pointe rouge 13008 Marseille -France.

TEMPERATURE LIMITATIONS: This BC should be used in temperatures no lower than -4°F (-20°C) and no higher than 150°F (65°C).



WARNING: This is NOT a life jacket: It does not guarantee a head up position of the wearer at the surface. It is not designed to provide face-up flotation in all situations; therefore it does not meet U.S. Coast Guard regulations for a life preserver or personal flotation device (PFD). If you become unconscious in the water without a buddy present to immediately give assistance, you may suffer serious injury or death from drowning.



Table of Contents

Your buoyancy compensator is primarily designed to help you maintain neutral buoyancy while in a comfortably balanced, face-down swimming position underwater. It is also designed to provide you with flotation so that you can rest on the surface, but it is not designed to function as a life preserver or personal flotation device (PFD). In order to meet U.S. Coast Guard regulations, a PFD must be designed so that it automatically rights you to a face-up position and holds your head out of the water on the surface. The design characteristics of a personal flotation device are different from those of a buoyancy compensator. The ability of any flotation device to float you in a face-up position can also be affected by other diving equipment you wear, including a cylinder, weight or exposure suit, and whether it can be inflated before you lose consciousness.

For this reason, it is important to always dive with and maintain close proximity to your buddy at all times. Do not depend on any flotation device to hold your face above the surface in the event that you are rendered unconscious in the water while diving.

If you have any questions regarding your Buoyancy Compensator or the information found in this manual, please contact your regional Aqua Lung Dealer or Distributor. Distributor information is available on the Aqua Lung website at: www.aqualung.com



WARNING: Although this manual provides some basic guidelines for certain buoyancy control techniques, it is not a substitute for training from a professional diving instructor. Failure to weight yourself properly may create a hazardous condition that could lead to serious injury or death. If you are unsure how to weight yourself in order to achieve optimum buoyancy underwater and on the surface, do not dive until you have obtained the necessary instruction from your diving instructor or an Authorized Aqua Lung Dealer or Distributor.



DEALER INSPECTION AND SERVICE



WARNING: DO NOT attempt to perform any disassembly or service of your BC. Service requiring disassembly must only be performed by a factory-trained Aqua Lung technician. To obtain service or repair, such as power inflator service or replacement of the bladder, see your local Authorized Aqua Lung Dealer or Distributor.

1. It cannot be assumed that the BC is in good working order on the basis that it has received little use since it was last serviced. Remember that prolonged or improper storage can still result in internal corrosion and/or deterioration of o-ring seals and valve springs, as well as bladder seam degradation.
2. It is imperative that you obtain prescribed dealer service for your BC at least once a year from an authorized dealer, including a general air leak inspection, visual inspection of the SureLock weight pouch handles (if equipped) and complete overhaul of the power inflator and OPR valve. Your BC may require this service more frequently, depending on the amount of use it receives and the environmental conditions it is used in.
3. If the BC is used for rental or training purposes in salt, chlorinated, or silted fresh water, it will require prescribed dealer service every three to six months. Use in chlorinated water will greatly accelerate the deterioration of most components, and require more frequent service.
4. **DO NOT** attempt to perform any disassembly or overhaul service of your BC. Doing so may cause the BC to dangerously malfunction, and will render the warranty null and void. All service must be performed by an Authorized Aqua Lung Dealer or Distributor.



NOTE: *It is important to obtain prescribed dealer service for your BC at least once annually, from an Authorized Aqua Lung Dealer or Distributor, your personal safety and the mechanical integrity of your BC depends on it.*



WARRANTY INFORMATION

All warranty transactions must be accompanied by proof of original purchase from an Authorized Aqua Lung Dealer or Distributor. Be sure to save your sales receipt, and present it whenever returning your BC for warranty service.


LIMITED LIFETIME WARRANTY

Warranty coverage on buoyancy compensators covers the product throughout its useful life, subject to the conditions listed below and utilizes a pro-rated replacement policy*.

Aqua Lung warrants to the original purchaser for the useful life of the product, from the date of purchase, that the product will be free from defects in materials and workmanship, provided that it receives normal use, proper care and prescribed dealer service subject to the limitations listed below. The Limited Lifetime Warranty is extended only to the original purchaser for purchases made from an Authorized Aqua Lung Dealer or Distributor and is not transferable. This warranty is limited to repair or replacement only at the discretion of Aqua Lung.

* PRODUCT REPLACEMENT ON A PRORATED BASIS

Products under the Limited Lifetime Warranty that malfunction due to material or manufacturer defects that have also had a significant amount of use will be replaced on a prorated basis. Prorating will be determined by a percentage factor based on the condition of the product and how long the product was used prior to the warranty claim. This can be useful to evaluate Limited Lifetime Warranty claims since the warranty period is for the “useful life of the product” and not a set length of time. The following guidelines should be used in determining what prorated percentage will be used.

 **NOTE:** *This can be a subjective evaluation. Fair and reasonable judgment should be used.*

Prorated Values of Products Sold at Retail	Aqua Lung Pays	Customer Pays
Like new and less than 2 years old	100%	0%
Slightly used and less than 5 years old	75%	25%
Very used and /or more than 5 years old	50%	50%
Worn out	0%	100%



WARRANTY LIMITATIONS

Warranty coverage does not extend to damages caused by improper use, improper maintenance, neglect, unauthorized repairs, modifications, accidents, fire, casualty or normal wear and aging.

Cosmetic damage(s), such as scratches, nicks and fraying are not covered under warranty except when the product is new, out of the original packaging.

This warranty does not extend to equipment used for rental, commercial or military purposes.

This warranty gives you specific legal rights. You may have rights which vary from state to state and country to country.

AQUA LUNG DISCLAIMS AND EXCLUDES ANY LIABILITY FOR INCIDENTAL OR CONSEQUENTIAL DAMAGES. SOME STATES IN THE U.S. AND CERTAIN FOREIGN COUNTRIES DO NOT ALLOW EXCLUSIONS OR LIMITATIONS OF LIABILITY FOR INCIDENTAL OR CONSEQUENTIAL DAMAGES, SO THIS MAY NOT APPLY TO YOU.



WARNING: It is dangerous for untrained and uncertified persons to use the equipment covered by this warranty. Therefore, use of this equipment by an untrained person renders any and all warranties null and void. Use of SCUBA equipment by anyone who is not a trained and certified diver, or receiving training under the supervision of an instructor, could lead to serious injury or death.



BASIC SETUP

Aqua Lung recommends that you bring your buoyancy compensator, together with your regulator, to your authorized dealer for the installation of the MP inflator hose and other accessories. The retailer can also answer any questions you may have pertaining to the information in this manual.



NOTE: *The terms “hook”, “loop” and “hook & loop” are used throughout this manual. Hook & Loop is commonly known as Velcro®, which is a trademarked brand of hook & loop. Many of the BC’s components have hook & loop attachments, including the waistband, cylinder bands, weight pouch flaps and inflator hold down.*

If it is not possible to return the BC with your regulator to your authorized dealer, you may install the MP quick disconnect inflator hose by carefully performing the steps in the following procedure. Please note that the procedure varies based on the presence or absence of the i3 Control Unit.



ATTACHING THE MP HOSE TO THE FIRST STAGE

1. Remove the inflator hose from the power inflator body by gripping the grooved sleeve over the quick disconnect coupling with your thumb and forefinger. Slide the sleeve back.



2. Remove the port plug from an MP port on the regulator using an appropriately sized wrench.



WARNING: DO NOT connect the inflator hose to a high pressure (HP) port (greater than 200 psi / 14 bar). This may cause the hose to burst when pressurized, which can result in serious injury. If you are unsure which regulator port is medium pressure (MP) or high pressure (HP), consult your regulator owner's manual or your dealer before attaching the hose.

3. Check to ensure the o-ring is present and in good condition. Screw the threaded end of the hose into the port and tighten to 40 in-lbs (4.5 Nm) with a 9/16" wrench.





THREADING THE CYLINDER BAND

Your BC ships from the factory with the cylinder band already threaded, but in the event it becomes unthreaded, please follow the directions below:

1. Firmly grasp the metal D-ring with your left hand.



2. While firmly holding the metal D-ring, rotate the back towards the webbing. The buckle should form an angle with the metal D-ring as shown in the top view.

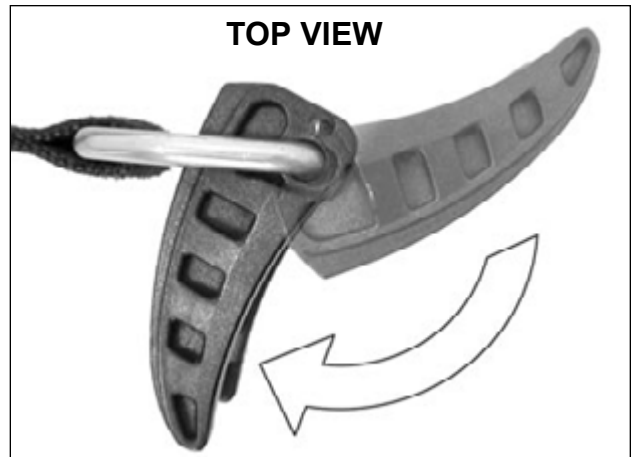




Table of Contents

3. Insert band through the metal D-ring, then through the middle slot.



4. Insert band through the inside slot.





SECURING THE BAND TO THE CYLINDER



NOTE: BC cylinder bands adjust for all standard cylinder diameters: 6.9 in (17.5 cm), 7.25 in (18.5 cm), and 8.0 in (20.3 cm). The cylinder bands are properly threaded to the buckles when the BC leaves the factory. If rethreading is necessary, follow the procedure in the section: *Threading the Cylinder Band*.



WARNING: The cylinder band will initially stretch as it becomes wet. Always wet the band before making the final adjustment; apply enough tension to ensure that the cylinder is completely secure. Test this connection before every dive. If the cylinder slips free from the BC during the dive, you may lose your air supply, which could lead to serious injury or death.

1. Wet the cylinder band and then slide it over the cylinder so that the BC is at the desired position in relation to the cylinder valve. Make sure the cylinder valve air outlet is facing the back of the BC.



2. While holding the cylinder secure, pull the free end of the cylinder band until there is a very tight fit between the pack and the cylinder.

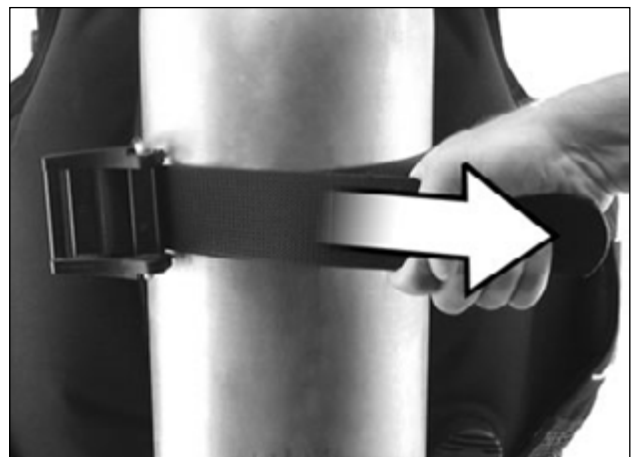




Table of Contents

3. Close the buckle half way to hold the cylinder band taut, and thread the free end of the band through the open slot in the end of the buckle.



4. Pull the cam buckle closed so that it lies flat against the cylinder. Secure the end of the cylinder band with the hook & loop attachment.



5. Test the tightness by pushing/pulling the back frame and cradle.



WARNING: Verify the tension of the cylinder band prior to every dive. Failure to do so may result in the cylinder slipping during the course of a dive.



DONNING AND ADJUSTMENT PROCEDURES

1. Remove the weight pouches from the BC, if applicable.
2. Disconnect the waist buckle and waistband.
3. Ensure that the quick release buckles (if equipped) on both torso straps are securely fastened. While firmly holding the torso strap where it connects to the BC lobe, fully extend each torso strap to its maximum length by pushing straight up on the slide buckle.
4. While your dive buddy lifts and holds the BC/cylinder behind you, place your arms through the BC torso straps as if you were putting on a jacket.
5. While your buddy continues to hold the cylinder, connect the waistband and waist buckle. The weight of the cylinder should rest on the lumbar region (lower part) of your back.
6. Connect the chest strap buckle. Pull on the free end of the strap to tighten. The chest strap should feel comfortable across the chest; it should not be overtightened so that it feels restrictive.
7. After your buddy has released the cylinder and the BC feels comfortably supported on your hips and shoulders, bend forward at the waist and adjust the torso straps to a comfortable length by pulling on the torso strap D-rings (if equipped).



NOTE: *Adjusting the shoulder straps too tightly will transfer the cylinder weight from the hips to the shoulders, restricting your arm movement and decreasing comfort.*

8. If necessary, readjust the waistband and waist buckle so that they are comfortably snug, but not restricting.



ADJUSTING THE SHOULDER BUCKLE POSITION

For optimum comfort, the shoulder buckles can be raised or lowered. This also allows you to extend or reduce the length of the shoulder straps.

1. Remove the free end of the upper torso strap that is tucked away between the bladder and shoulder lobe.



2. To lower the buckle, tilt the buckle inward and pull straight down.





Table of Contents

3. To raise the buckle, hold the buckle with one hand and pull on the free end of strap.



4. Repeat steps 1 & 2 for the other buckle.

5. After each adjustment, try the BC on to ensure a proper fit.

6. Once the BC is properly adjusted, tuck the free ends of the straps between the bladder and shoulder lobes.



ADJUSTING THE WAISTBAND LENGTH - HOOK AND LOOP SYSTEM

Lay your BC so that the front of the BC is facing you. Disconnect the waistband buckle, the waistband, and shoulder straps so you have open access to the back pad.

1. There is a retaining flap located on the bottom backside of the back pad. Disconnect the flap and lift up the back pad to expose the waistband.



2. For each side of the waistband, detach the hook & loop and adjust to the desired position, then re-secure the hook & loop. The hook and loop must overlap a minimum of four inches, but not extend past the end of the loop.



3. Re-secure the back pad and try on the BC to make sure the waistband length is correct. Repeat this procedure until the proper length is achieved.



WEIGHT INTEGRATION FEATURES

SureLock II™ Integrated Weight Release System

Your BC features the SureLock II Integrated Weight System. The SureLock II weight system pouches are secured with a mechanical locking mechanism. The SureLock II weight system either supplements or replaces a conventional weight belt. This unique feature allows you to quickly jettison either one or both weight pouches in the event of an emergency, thereby maintaining better control over your rate of ascent. The weight pouches can be easily reloaded into the BC pockets while you are wearing the BC.



NOTE: *It is very important to read the following instructions, and become thoroughly familiar with the correct methods for installing and releasing weight before you dive with your BC.*

Maximum Weight Capacity

The SureLock II weight system features two interchangeable weight pouches which can be filled with either block weights or “soft weight” (pouches containing lead shot), in increments of 5 pounds or less. For ease of operation, low-profile block weight is strongly recommended. Refer to the **BC Weight Capacity Chart** for your specific model of BC for maximum weight pouch capacity.




WARNING: For smaller BC's, the lift capacity may not exceed the weight pouch carry capacity. The negative buoyancy of the lead, plus the negative buoyancy of the cylinder (when full), should not exceed the BC's positive buoyancy. The inability to achieve positive buoyancy while at depth or on the surface may lead to a hazardous situation that could lead to serious injury or death. Refer to the model-specific label, usually found in the pocket of your BC, to find the designated lift capacity, and load weight pouches accordingly.



WEIGHT INTEGRATION FEATURES

Loading Weight into the SureLock II™ Weight Pouches

 **NOTE:** Your BC may not be able to float by itself on the surface if your BC is loaded with weight at or near its maximum buoyancy. In water weight of cylinders and other equipment may contribute to negative buoyancy of your full set of SCUBA equipment.

Pearl BC Weight Capacity Chart

Pearl			
BC Size	Trim Weight	Releasable Weight	Weight Pocket Type
XS	N/A	20 lb/9 kg	10 lb (4.5 kg) X 2
SM	6 lb/3 kg	20 lb/9 kg	10 lb (4.5 kg) X 2
MD	10 lb/4.5 kg	20 lb/9 kg	10 lb (4.5 kg) X 2
ML	10 lb/4.5 kg	20 lb/9 kg	10 lb (4.5 kg) X 2
LG	10 lb/4.5 kg	20 lb/9 kg	10 lb (4.5 kg) X 2



WARNING: The non-releasable weight pockets are intended strictly for containing non-releasable weight, used in addition to releasable weight. Do not fill either pocket with weight unless you are certain you can achieve positive buoyancy at depth by releasing your weight pouches or weight belt while your BC is completely deflated.



WEIGHT INTEGRATION FEATURES

Loading Weight into the SureLock II™ Weight Pouches

Aqua Lung recommends that each pouch is loaded with equal amounts of weight for optimum balance, preventing the tendency to roll to one side during the dive. Also, it is strongly recommended that each weight pouch is fully loaded with two separate weight blocks for the 10 lb pouch (load horizontally), three separate weight blocks for the 15 lb pouch (load vertically) or four separate weight blocks for the 16 lb pouch (load horizontally). For example, if you want to load a 10 lb pouch with 10 pounds, use two separate 5 pound blocks, if you want to load a 15 lb weight pouch with 15 pounds, use three separate 5 pound blocks, if you want to load a 16 lb pouch with 16 pounds, use four separate 4 pound blocks.

Loading Weight into the 10 lb SureLock II™ Weight Pouches

Lift up each pouch's flap (**a**), and lay it back over the handle (**b**). While holding the pouch fully open, insert the weight (horizontally) and then close the flap. When each pouch has been loaded with weight, firmly run your hand over the flaps to securely fasten the hook & loop (**c**).



Loading Weight into the 15 lb SureLock II™ Weight Pouches

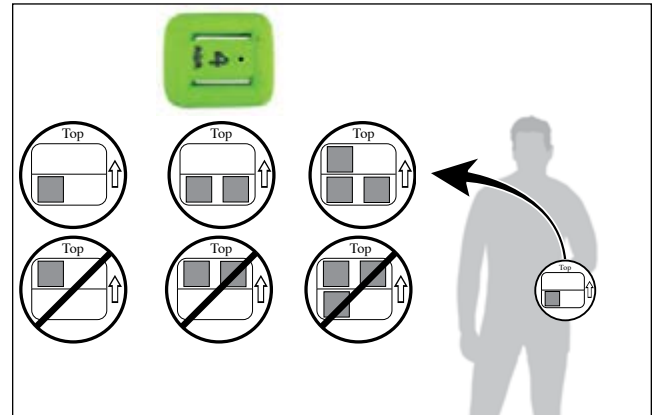
Lift up each pouch's flap (**a**), and lay it back over the handle (**b**). While holding the pouch fully open, insert the weight (vertically) and then close the flap. When each pouch has been loaded with weight, firmly run your hand over the flaps to securely fasten the hook & loop (**c**).





Loading Weight into the 16 lb SureLock II™ Weight Pouches

The procedure for loading the 16 lb weight pouch is the same as the 10 lb weight pouch, except that the 16 lb weight pouch has an upper and lower weight compartment. Aqua Lung recommends that the pouches be completely filled with four separate weight blocks (two per compartment); however, if you need to partially fill the pouch, load the bottom compartment first. Use the diagram for proper weight placement. (This diagram is also sewn on the weight pouch flap).



Loading Soft Weight into the SureLock II™ Weight Pouches

Aqua Lung recommends block weights be used in the SureLock II weight pouch for the best fit and ease of insertion. Soft weights may be used, but it is critical that the weights be loaded and secured correctly. The procedure for loading soft weights is the same as block weights, but it is important to ensure the soft weights are completely fitted into the weight pouch. This will ensure that the SureLock II locking mechanism can properly engage.



NOTE: Some weight pouches are specially pre-formed to fit the contour of your waist. Do not attempt to bend or straighten a pre-formed pouch.



INSTALLING THE SURELOCK II™ WEIGHT POUCHES ON YOUR BC

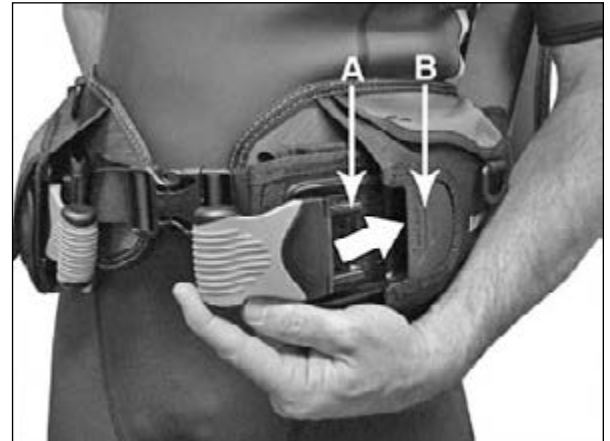


CAUTION: Aqua Lung strongly recommends that you do not attempt to don your BC when it is fully loaded with weight. You may otherwise risk injury due to muscle strain or a temporary loss of balance.

The SureLock II pouches are installed with the plastic panel facing outward (pouch flap facing toward the BC). To install either pouch, grasp the Lobe Retaining D-ring (if equipped) with your opposite hand and slide the closed end of the pouch into the opening of the holster. Insert the male portion of the SureLock II buckle (a) into the female receptacle (b) on the BC until you can hear/feel it click into place.



WARNING: Before every dive, it is important to make sure each weight pouch is secure, in order to prevent the pouches from falling out. Involuntary release of both weight pouches underwater can cause a sudden increase in buoyancy causing a rapid ascent, which could lead to serious injury or death due to arterial gas embolism, decompression sickness or drowning.



WARNING: Ensure the soft weight is inserted all the way into the SureLock II pouch. If any excess of the soft weight is protruding out of the weight pouch, it can prevent the SureLock II pouch from being properly secured. Involuntary release of both weight pouches underwater can cause a sudden increase in buoyancy causing a rapid ascent, which could lead to serious injury or death due to arterial gas embolism, decompression sickness, or drowning.





RELEASING SURELOCK II™ WEIGHT POUCHES

Unlike a weight belt, which has only one release mechanism, each weight pouch is connected to the BC independently of the other and must be released separately. This provides you with the option of being able to jettison one pouch at a time, thereby maintaining better control of your ascent rate in an emergency.

In the event that you need to jettison weight, simply pull the release handle of each pouch towards the center of the waist buckle. When the pouch is completely disengaged from its holster, hold it out and away from your body before dropping it.



WARNING: Ensure that your weight pouches are not obstructed by any straps, lines, etc. DO NOT add weight to the BC's pockets, as this may interfere with the removal of the pouches in an emergency. Failure to ditch weight in an emergency may lead to serious injury or death due to drowning.



WARNING: To avoid injuring other divers, always look below you before dropping weight.



NOTE: In addition to becoming familiar with the weight system yourself, it is very important to explain its function to your dive buddy so that he/she is equally familiar with it.



NON-RELEASABLE WEIGHT

To supplement the releasable weight, some BC's are designed to carry non-releasable weight in two fixed pocket locations (Zuma trim pockets are sold separately and may be added onto the cylinder band).

To install weight into the non-releasable weight pockets, simply disconnect the flap buckle, slide in the weight block, fold the flap over the pocket, and reconnect the buckle. Weight should be added to the non-release (trim) pockets after the BC has been secured to the cylinder.

The non-releasable weight pockets are designed to hold single rectangular weight blocks. To avoid accidental loss of weight, Aqua Lung strongly advises against using small bullet-shaped weights and shot weight.

Refer to the **BC Weight Capacity Chart** for maximum non-releasable (trim) weight capacity.

Because the weight is non-releasable, it must not be used as your primary source of ballast. After filling the fixed pockets with weight, it is extremely important to check your buoyancy in the water while wearing the BC attached to a fully charged cylinder and your exposure suit. While standing in chest deep water, deflate the BC completely and check to ensure that you can easily achieve positive buoyancy by jettisoning your releasable weight.



WARNING: The non-releasable weight pockets are intended strictly for containing non-releasable weight, used in addition to releasable weight. Do not fill either pocket with weight unless you are certain you can achieve positive buoyancy at depth by releasing your weight pouches or weight belt while your BC is completely deflated.



INFLATION METHODS USING THE POWERLINE INFLATOR

Your BC has been fitted with a Powerline Inflator. This section covers inflation using this system.

Power Inflation using a Powerline Inflator

For the power inflator to operate, the MP inflator hose must be connected. To connect the MP hose, grip the grooved sleeve at the connection fitting with your thumb and forefinger, and slide the sleeve back. Place the fitting over the quick disconnect plug (c), and firmly push inward while releasing the sleeve. Check to ensure that the hose is securely attached. After the hose is attached to the power inflator, pressurize the first stage regulator by slowly opening the cylinder valve.

The working pressure of the power inflator is as follows: 103 PSI (7 BAR) minimum - 294 PSI (20 BAR) maximum.

To inflate your BC with low pressure air, depress the power inflator button (d). Do not hold the inflator button depressed continuously underwater, as this could cause you to become excessively buoyant. Instead, depress the button in short bursts until you become neutrally buoyant.



WARNING: Do not rely on the power inflator as the only means to inflate your BC. It is important to practice the technique for orally inflating your BC so that you are prepared for any type of malfunction or out of air situation that could render the power inflator inoperable. You may otherwise be unable to achieve positive buoyancy in an emergency, which could lead to serious injury or death.

Oral Inflation using a Powerline Inflator

To orally inflate your BC, place your lips on the oral inflator mouthpiece (a) and exhale a small amount of air into the mouthpiece to purge any water that may still be in the housing. While continuing to exhale into the mouthpiece, depress the oral inflator button (b) to inflate the BC. Immediately after exhaling, release the oral inflator button to prevent air from escaping.





DEFLATION METHODS FOR BC'S WITH A POWERLINE INFLATOR

Throughout the course of a dive, it will be necessary to release air from the BC using one of the three methods described in the following instructions. Each method uses a valve that is in a different location. The method you choose at any time may depend on whether you are making your initial descent feet first, headfirst, or maintaining neutral buoyancy underwater. Always remember to utilize the valve that is at the highest point on the bladder, depending on your position in the water.

Deflation Via Oral Inflator

To deflate the BC using the oral inflator, lift the Powerline inflator body to its highest possible position (above the head). Press the oral inflator button (**a**) to start venting air. This method is most effective on the surface when starting the initial descent.



Deflation Via Powerline Dump Valve

Inside the power inflator's corrugated hose is a cable that attaches the power inflator to the Powerline Dump Valve at the top of the airway assembly. You can vent air from the BC by firmly pulling straight down on the power inflator. This dump valve provides an effective and convenient way to vent air from the BC while in either an upright or facedown swimming position.



Deflation Via Dump Valve / Flat E-Valve / Flat Valve

BC's have either one, two or three additional Dump Valves / Flat E-Valves / Flat Valves, depending on the specific BC model. Their primary function is to relieve excess air pressure inside the bladder, but some may be equipped with a knob and cord assembly and can be opened manually by pulling on the knob and cord assembly to quickly dump air.

To dump air as quickly as possible, always use the dump valve / Flat E-Valve / Flat valve at the highest point in the water column. For example, the lower rear valve works best while making a headfirst descent, or swimming in a facedown position; the right shoulder valve works best when in an upright position.



Dump Valve



Flat E-Valve



Flat Valve



CAUTION: The proper function of the over pressure relief (OPR) valve is vital to prevent damage to the BC bladder. Unauthorized service or tampering may render this valve inoperable, and could cause the bladder to leak or burst. This type of damage is not repairable, and is not covered under warranty.



WARNING: Most training agencies recommend that you should descend in an upright, feet-first position, in order to maintain a slower and more controlled descent. This is especially true if you experience difficulty equalizing your ears, or if you are descending in low visibility conditions.



SPECIAL FEATURES

Knife Grommets

Your BC has two grommet holes designed to accept many of the specialty BC knives available from Aqua Lung. For information on available knife models, consult an Authorized Aqua Lung Dealer or Distributor. To attach or remove the knife and sheath from the BC, refer to the instructions provided with the knife.



Octo Pocket™

Your BC features an Octo Pocket located on the inside of one or both of the BC lobes which allows you to easily place your octopus (alternate air source) in a highly visible, easy to access location. Fold the hose back on itself and insert downward into the pocket.





Console Pocket

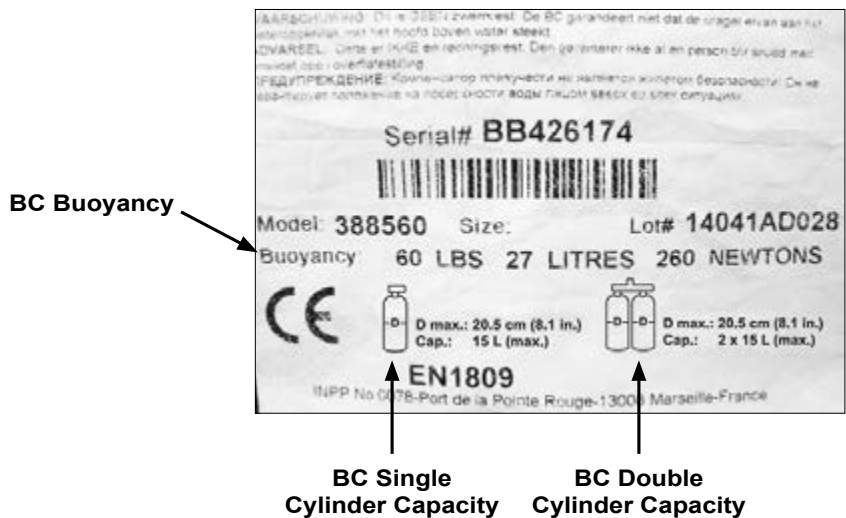
The scooped style octo pocket on either BC lobe can also be used as a console pocket. The divers console can be run behind the pocket and out the scooped opening on the top, front of the lobe.





BC Buoyancy and Cylinder Capabilities

Each BC has a tag in one of the following locations: inside the BC pocket, on the inward side of the harness or inside the outer bag of the buoyancy cell. This tag contains specific information regarding the characteristics of your particular model BC, such as buoyancy and cylinder capabilities. It is important to review this information in order to know the proper cylinder sizes that may be used (single and double cylinders) and to ensure the amount of weight being used does not exceed the buoyancy of the BC.



NOTE: The BC tag above is an example only. Reference the specific tag located on your model BC.

Pearl	
BC Size	Cylinder Capacity
XS	
SM	
MD	
ML	
LG	



Double Cylinder Setup - Not Available

This BC is designed to be a recreational BC used primarily by traveling divers. It is not designed to be used with double cylinders.



WARNING: DO NOT use double cylinders with this BC. When fully charged and worn together as doubles, some cylinders may create enough negative buoyancy to counteract the amount of buoyancy your BC can provide. At depth, this can lead to a dangerous situation if your wetsuit becomes compressed and you can no longer achieve positive buoyancy by jettisoning weight. The excess weight of some twin cylinders may also lead to structural failure of the backpack or harness. Such an event while diving may separate you from your primary air source, and could lead to serious injury or death.



PRE-DIVE INSPECTION FOR BC'S USING POWERLINE INFLATOR

Before each use, the BC must be given a thorough visual inspection and functional test. NEVER dive with a BC that shows signs of damage to its bladder or valves until it has received a complete inspection and service from an Authorized Aqua Lung Dealer or Distributor.

1. Connect the power inflator to a source of clean, compressed air via the MP quick disconnect hose. Depress and release the inflator button intermittently to ensure that the airflow is unobstructed, and that the airflow stops completely when the button is released.
2. Manually operate the overpressure relief (OPR) valve by pulling on the attached knob and cord to release air from inside the BC, and then fully inflate the BC until the OPR valve opens. Examine the operation of the OPR valve by repeatedly inflating the BC to ensure that it opens to relieve excess pressure, yet closes immediately afterward to allow the bladder to remain taut and fully inflated.
3. Check the function of the oral inflator button and Powerline Dump Valve, to ensure a rapid and unobstructed exhaust from each valve. Fully inflate the BC once again, and disconnect the power inflator from the compressed air supply and listen closely for any leaks.



WARNING: If you can hear any leaks, or if the bladder begins to deflate within 5-10 minutes, DO NOT attempt to use the BC until it has received service from an Authorized Aqua Lung Dealer or Distributor.

4. Make a final check of the cylinder band's tension to ensure that been secured properly. Re-tighten if necessary.
5. Before entering the water, check both weight pouches, if applicable, to ensure that they are correctly fastened to the BC.



WARNING: Loss of the releasable weight pouches can occur if they are not properly secured. Involuntary release of both weight pouches can cause a sudden increase in buoyancy causing a rapid ascent, and could lead to serious injury or death due to arterial gas embolism, decompression sickness, or drowning.



POST-DIVE CARE AND MAINTENANCE

With proper care, your BC will provide many years of reliable service. The following preventive maintenance must be performed to extend the life of your BC:

1. Avoid prolonged exposure to direct sunlight and extreme heat. Nylon fabric can quickly fade when exposed to the sun's ultraviolet rays, and extreme heat may damage the welded bladder seams.
2. Avoid repeated or prolonged use in heavily chlorinated water, which can cause the BC fabric to discolor and decay prematurely.
3. Do not allow the BC to chafe against any sharp objects or rough surfaces that could abrade or puncture the bladder. Do not set or drop heavy objects such as block weights on the BC.
4. Avoid any contact with oil, gasoline, aerosols, or chemical solvents.
5. To preserve the life of the bladder, rinse it inside and out with fresh water after every day of use, using the following procedure:
 - a) Pressurize the power inflator with medium pressure (MP) air via the MP hose.



CAUTION: Before rinsing, ensure that the inflator is pressurized with air. This will prevent debris and contaminants from entering the valve mechanism if the inflator button is accidentally depressed.

- b) Using a garden hose, direct water through the oral inflator mouthpiece to flush the interior of the bladder, and then thoroughly rinse the exterior of the BC.
- c) Completely drain the bladder of water, either through the oral inflator or through the over-pressure relief valve.
- d) After rinsing, inflate the BC, and allow it to dry inside and out.

STORAGE

Store the BC partially inflated, away from direct sunlight and in a clean, dry area. Do not store the BC in an enclosed space, such as a car trunk, where temperatures may fall below 0°F (-18°C) or rise above 120°F (49°C).