

REGULATOR

# LEG3ND

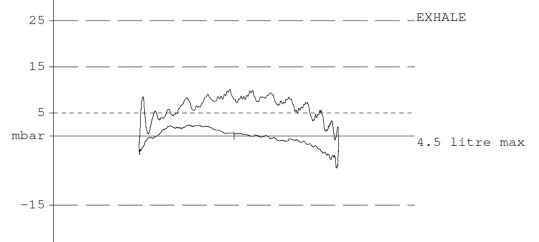
RELEASE DATE: JANUARY 2020



## Breathing performance

Average work of breathing  $W = 0.70$  J/Liter, with a 62.5 l/min (2.21 cubic feet/min) breathing cycle, at a depth of 50 m (164 ft) and with a 50 bar (725 psi) working pressure.

PRESSURE - VOLUME DIAGRAM AT DEPTH OF : 49,8 msw (163,4 fsw)



## FEATURES

### 1<sup>st</sup> stage

1 <sup>st</sup> Stage Technology	Auto-balanced
Mechanism	Diaphragm, compensated upstream valve, T-shaped
Wet/Dry chamber	Dry Chamber
Maximum Working Pressure	300 bar on DIN version (4350 psi) 232 bar on yoke version (3360 psi)
ACD system	Automatic Closure Device included
Number of HP ports	2 (7/16" UNF)
Number of MP ports	4 (3/8" UNF)
Medium Pressure	8.5 bar $\pm$ 0.5 bar (123 psi $\pm$ 7,25 psi)
Flow rate (surface, hose)	1500 l/min (53.0 cubic feet/min) with HP = 200 bar (2900 psi)
Body	Satin chrome plated brass body
Protector	Rubber
Insert seat, spring	Stainless steel
Conical filter	Nickel-plated bronze
O-rings	EPDM

### 2<sup>nd</sup> stage

2 <sup>nd</sup> stage technology	Pneumatically balanced
Mechanism	Compensated downstream valve
Pressure relief	3.3 to 4.3 mbar (0.05 to 0.06 psi)
Venturi effect adjustment	Yes
Cracking effort adjustment	No
Housing, venturi switch	ABS-PC and elastomer overmolded venturi switch
Deflector	ABS-PC and elastomer overmolded venturi switch
Cover, washer	ABS-PC and elastomer overmolded venturi switch
Mouthpiece, exhaust valve, valve, diaphragm, lip shield	Silicone
Adjustable seat	Chrome-plated brass

## Weight

	In grams	In pounds
Complete yoke regulator	1316	2.90
Complete DIN regulator	1106	2.44
HP Yoke	957	2.11
HP DIN	747	1.65
LP Leg3nd	227	0.50
Octopus	368	0.81
Hose	132	0.29
Octopus hose	154	0.34

## Hose

Aqua Flex braided thermoplastic hose with heat exchanger Length: black = 730 mm (2.39 ft), yellow = 1 m (3.28 ft)

## Certification

Certification EN250A for cold water (< 10 °C (50 °F))

## Nitrox compatibility

40% O<sub>2</sub> max. for yoke or DIN version outside EC

## Content

Regulator box	Leg3nd + instructions
Regulator kit box	Leg3nd + Octopus + instructions
Octopus box	Octopus + instructions

## Packaging

	In centimeters (l x h x d)	In inches (l x h x d)
Regulator box	34,5 x 17,8 x 9,5	13.4 x 6.7 x 3.6
Regulator kit box	34,5 x 24 x 10	13.4 x 9.4 x 3.9
Octopus box	17,7 x 9,0 x 17,4	6.7 x 3.5 x 6.7

## PRODUCT BENEFITS

### 1<sup>st</sup> stage

#### ACD

Patented ACD system protects the regulator inner mechanism from the ingress of water and particles.

#### Resistance to freezing:

- The dry chamber keeps inner components clean and dry by isolating them from the outside environment.
- Deep ribs create a large heat exchange surface area that helps to prevent ice forming on the mechanism (Surface area +30% compared to Glacia and +70% compared to Legend 2)
- The new over-molded cap delays ice forming over the diaphragm.

#### Auto-balanced:

Progressive increase of the MP depending on depth to keep a consistent work of breathing despite the increased gas density.

**Triangular-shaped DIN and yoke handwheel** made of two materials with a Soft Grip surface which makes gripping easier when mounting and dismantling.

**Open yoke handwheel** to avoid water retention.

**Anti-dust cap** adjoining the regulator body to protect the inlet fitting and the ACD system from impacts. Valid for both the DIN and yoke versions.

#### MP and HP ports:

Perfectly positioned MP and HP ports provide ideal house routing.

#### Aqua Flex braided hose with two protectors:

- Flexible and light, only 132 g (0.29 lb)
- Enhances mouth comfort
- Makes storage easier.

### 2<sup>nd</sup> stage

**New Venturi lever:** ergonomic and over-molded with "soft-touch" elastomer. Prevents free flows when out of the mouth.

**New design** of the cover's vents enabling water to flow on the diaphragm:

- radial openings to avoid free-flows when diving in currents
- Openings widened to reduce peak inspiratory flow.

**New bubble deflector:** over-molded with "soft-touch" elastomer.

#### Over-molded purge cover

- Controls the regulator releasing air through the firm stop of the movement of the cover
- Easy regulator purging thanks to its wide surface area.

**Comfobite mouthpiece:** Mouthpiece with bridge (patented system): reduces jaw fatigue.

#### Detachable and reusable mouthpiece clamp:

Allows for a quick and tool-free mouthpiece change.

**Heat exchanger:** delays the freezing of the mechanism.

#### Deflector in the mouthpiece tube:

- Channels the airflow evenly in the mouthpiece during the inhalation phase
- Two-material deflector reduces its thickness and decreases the exhalation effort.

## PRODUCT REFERENCES, ACCESSORIES & KITS

	CPN		
LEG3ND YOKE	RG148000	EAN	3664372179961
		UPC	
LEG3ND DIN	RG148001	EAN	3664372179978
		UPC	
OCTOPUS	RS119005	EAN	3664372190454
		UPC	
LEG3ND YOKE KIT	RQ132115	EAN	3665771002379
		UPC	
LEG3ND DIN KIT	RQ132116	EAN	3665771002386
		UPC	
LEG3ND HP YOKE	RT146000	EAN	3664372190409
		UPC	
LEG3ND HP DIN	RT146001	EAN	3664372190416
		UPC	
LEG3ND LP	RS119002	EAN	3664372190423
		UPC	

	CPN		
Black Aqua Flex 3/8" MP 0.70 m hose with 2 protectors	RH119117	EAN	
		UPC	
Yellow Aqua Flex 3/8" MP 1 m hose with 2 protectors	RH119116	EAN	
		UPC	
Overbalanced diaphragm HP maintenance kit	RA121126	EAN	
		UPC	
Balanced LP maintenance kit	RA121128	EAN	
		UPC	

REGULATOR

# LEG3ND MBS

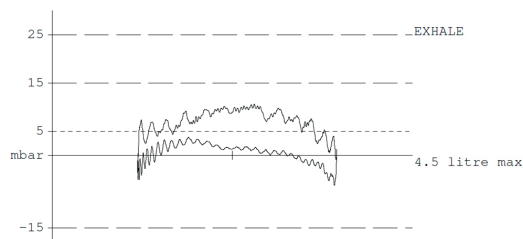
RELEASE DATE: JANUARY 2020



## Breathing performance

Average work of breathing  $W = 0.70$  J/Liter, with a 62.5 l/min (2.21 cubic feet/min) breathing cycle, at a depth of 50 m (164 ft) and with a 50 bar (725 psi) working pressure.

PRESSURE - VOLUME DIAGRAM AT DEPTH OF : 49,6 msw (162,6 fsw)



## FEATURES

### 1<sup>st</sup> stage

1 <sup>st</sup> Stage Technology	Auto-balanced
Mechanism	Diaphragm, compensated upstream valve, T-shaped
Wet/Dry chamber	Dry Chamber
Maximum Working Pressure	300 bar on DIN version 232 bar on yoke version
ACD system	Automatic Closure Device included
Number of HP ports	2 (7/16" UNF)
Number of MP ports	4 (3/8" UNF)
Medium Pressure	8.5 bar $\pm$ 0.5 bar (123 psi $\pm$ 7,25 psi)
Flow rate (surface, hose)	1500 l/min (53.0 cubic feet/min) with HP = 200 bar (2900 psi)
Body	Satin chrome plated brass body
Protector	Rubber
Insert seat, spring	Stainless steel
Conical filter	Nickel-plated bronze
O-rings	EPDM

### 2<sup>nd</sup> stage

2 <sup>nd</sup> stage technology	MBS - Master Breathing System
Mechanism	Compensated downstream valve
Pressure relief	3.3 to 4.3 mbar (0.05 to 0.06 psi)
Venturi effect adjustment Cracking effort adjustment	Yes: combined patented MBS system
Housing, venturi switch	ABS-PC and elastomer overmolded venturi switch
Deflector	ABS-PC and elastomer overmolded venturi switch
Cover, washer	ABS-PC and elastomer overmolded venturi switch
Mouthpiece, exhaust valve, valve, diaphragm, lip shield	Silicone
Adjustable seat	Chrome-plated brass

## Weight

	In grams	In pounds
Complete yoke regulator	1319	2.91
Complete DIN regulator	1109	2.44
HP Yoke	957	2.11
HP DIN	747	1.65
Leg3nd MBS LP	230	0.51
Octopus	368	0.81
Hose	132	0.29
Octopus hose	154	0.34

## Hose

Aqua Flex braided thermoplastic hose with heat exchanger Length: black = 730 mm (2.39 ft), yellow = 1 m (3.28 ft)

## Certification

Certification EN250A for cold water (< 10 °C (50 °F))

## Nitrox compatibility

40% O2 max. for yoke or DIN version outside EC

## Content

Regulator box	Leg3nd MBS + instructions
Regulator kit box	Leg3nd MBS + Octopus + instructions
Octopus box	Octopus + instructions

## Packaging

	In centimeters (l x h x d)	In inches (l x h x d)
Regulator box	34,5 x 17,8 x 9,5	13.4 x 6.7 x 3.6
Regulator kit box	34,5 x 24 x 10	13.4 x 9.4 x 3.9
Octopus box	17,7 x 9,0 x 17,4	6.7 x 3.5 x 6.7

## PRODUCT BENEFITS

### 1<sup>st</sup> stage

#### ACD

Patented ACD system protects the regulator inner mechanism from the ingress of water and particles.

#### Resistance to freezing:

- The dry chamber keeps inner components clean and dry by isolating them from the outside environment.
- Deep ribs create a large heat exchange surface area that helps to prevent ice forming on the mechanism (Surface area +30% compared to Glacia and +70% compared to Legend 2)
- The new over-molded cap delays ice forming over the diaphragm.

#### Auto-balanced:

Progressive increase of the MP depending on depth to keep a consistent work of breathing despite the increased gas density.

**Triangular-shaped DIN and yoke handwheel** made of two materials with a Soft Grip surface which makes gripping easier when mounting and dismantling.

**Open yoke handwheel** to avoid water retention.

**Anti-dust cap** adjoining the regulator body to protect the inlet fitting and the ACD system from impacts. Valid for both the DIN and yoke versions.

#### MP and HP ports:

Perfectly positioned MP and HP ports provide ideal hose routing.

#### Aqua Flex braided hose with two protectors:

- Flexible and light, only 132 g (0,29 lb)
- Enhances mouth comfort
- Makes storage easier.

### 2<sup>nd</sup> stage

#### MBS (Master Breathing System) :

2-in-1 adjustment: a single knob to adjust the cracking effort and the Venturi effect for a controlled breathing effort. Quick adjustment by turning just once. Bi-material with a soft-grip surface for easier gripping.

#### New design of the cover's vents enabling water to flow on the diaphragm:

- Radial openings to avoid free-flows when diving in currents
- Openings widened to reduce peak inspiratory flow.

**New bubble deflector:** over-molded with "soft-touch" elastomer.

#### Over-molded purge cover

- Controls the regulator releasing air through the firm stop of the movement of the cover
- Easy regulator purging thanks to its wide surface area.

**Comfobite mouthpiece:** Mouthpiece with bridge (patented system): reduces jaw fatigue.

#### Detachable and reusable mouthpiece clamp:

Allows for a quick and tool-free mouthpiece change.

**Heat exchanger:** delays the freezing of the mechanism.

#### Deflector in the mouthpiece tube:

- Channels the airflow evenly in the mouthpiece during the inhalation phase
- Two-material deflector reduces its thickness and decreases the exhalation effort.

## PRODUCT REFERENCES, ACCESSORIES & KITS

	CPN		
LEG3ND MBS YOKE	RG148002	EAN	3664372179985
		UPC	
LEG3ND MBS DIN	RG148003	EAN	3664372179992
		UPC	
OCTOPUS	RS119005	EAN	3664372190454
		UPC	
LEG3ND MBS YOKE KIT	RQ132113	EAN	3664372187522
		UPC	
LEG3ND MBS DIN KIT	RQ132114	EAN	3664372187539
		UPC	
LEG3ND HP YOKE	RT146000	EAN	3664372190409
		UPC	
LEG3ND HP DIN	RT146001	EAN	3664372190416
		UPC	
LEG3ND MBS LP	RS119003	EAN	3664372190430
		UPC	

	CPN		
Black Aqua Flex 3/8" MP 0.70 m hose with 2 protectors	RH119117	EAN	
		UPC	
Yellow Aqua Flex 3/8" MP 1 m hose with 2 protectors	RH119116	EAN	
		UPC	
Overbalanced diaphragm HP maintenance kit	RA121126	EAN	
		UPC	
Balanced LP maintenance kit	RA121128	EAN	
		UPC	

REGULATOR

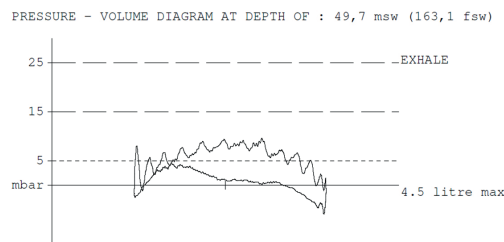
# LEG3ND ELITE

RELEASE DATE: JANUARY 2020



## Breathing performance

Average work of breathing  $W = 0.70$  J/Liter, with a 62.5 l/min (2.21 cubic feet/min) breathing cycle, at a depth of 50 m (164 ft) and with a 50 bar (725 psi) working pressure.



## FEATURES

### 1<sup>st</sup> stage

1 <sup>st</sup> Stage Technology	Auto-balanced
Mechanism	Diaphragm, compensated upstream valve, T-shaped
Wet/Dry chamber	Dry Chamber
Maximum Working Pressure	300 bar on DIN version 232 bar on yoke version
ACD system	Automatic Closure Device included
Number of HP ports	2 (7/16" UNF)
Number of MP ports	4 (3/8" UNF)
Medium Pressure	8.5 bar $\pm$ 0.5 bar (123 psi $\pm$ 7,25 psi)
Flow rate (surface, hose)	1500 l/min (53.0 cubic feet/min) with HP = 200 bar (2900 psi)
Body	Satin chrome plated brass body
Protector	Rubber
Insert seat, spring	Stainless steel
Conical filter	Nickel-plated bronze
O-rings	EPDM

### 2<sup>nd</sup> stage

2 <sup>nd</sup> stage technology	Pneumatically balanced
Mechanism	Compensated downstream valve
Pressure relief	3.3 to 4.3 mbar (0.05 to 0.06 psi)
Venturi effect adjustment	Yes
Cracking effort adjustment	Yes
Housing, venturi switch	ABS-PC and elastomer overmolded venturi switch
Deflector	ABS-PC and elastomer overmolded venturi switch
Cover, washer	ABS-PC and elastomer overmolded venturi switch
Mouthpiece, exhaust valve, valve, diaphragm, lip shield	Silicone
Adjustable seat	Chrome-plated brass

## Weight

	En gramme	En livre
Complete Leg3nd ELITE yoke regulator	1349	2.97
Complete Leg3nd ELITE DIN regulator	1139	2.51
HP Yoke	957	2.11
HP DIN	747	1.65
Leg3nd ELITE LP	260	0.57
Octopus	368	0.81
Hose	132	0.29
Octopus hose	154	0.34

## Hose

Aqua Flex braided thermoplastic hose with heat exchanger Length: black = 730 mm (2.39 ft), yellow = 1 m (3.28 ft)

## Certification

Certification EN250A for cold water (< 10 °C (50 °F))

## Nitrox Compatibility

40% O2 max. for yoke or DIN version outside EC

## Content

Regulator box	Leg3nd Elite + instructions
Regulator kit box	ELITE+ Octopus + instructions + AL50 pressure gauge + Explorer bag 2020
Octopus box	Octopus + instructions

## Packaging

	En centimètre (l x h x p)	En pouce (l x h x p)
Regulator box	34,5 x 17,8 x 9,5	13.4 x 6.7 x 3.6
Regulator kit box	34,5 x 24 x 10	13.4 x 9.4 x 3.9
Octopus box	17,7 x 9,0 x 17,4	6.7 x 3.5 x 6.7

## PRODUCT BENEFITS

### 1<sup>st</sup> stage

#### ACD

Patented ACD system protects the regulator inner mechanism from the ingress of water and particles.

#### Resistance to freezing:

- The dry chamber keeps inner components clean and dry by isolating them from the outside environment.
- Deep ribs create a large heat exchange surface area that helps to prevent ice forming on the mechanism (Surface area +30% compared to Glacia and +70% compared to Legend 2)
- The new over-molded cap delays ice forming over the diaphragm.

#### Auto-balanced:

Progressive increase of the MP depending on depth to keep a consistent work of breathing despite the increased gas density.

**Triangular-shaped DIN and yoke handwheel** made of two materials with a Soft Grip surface which makes gripping easier when mounting and dismantling.

**Open yoke handwheel** to avoid water retention.

**Anti-dust cap** adjoining the regulator body to protect the inlet fitting and the ACD system from impacts. Valid for both the DIN and yoke versions.

#### MP and HP ports:

Perfectly positioned MP and HP ports provide ideal hose routing.

#### Aqua Flex braided hose with two protectors:

- Flexible and light, only 132 g (0,29 lb)
- Enhances mouth comfort
- Makes storage easier.

### 2<sup>nd</sup> stage

**New Venturi lever:** over-molded with "soft-touch elastomer". Prevents free flows when out of the mouth.

**Cracking effort control knob:** allows the diver to adjust the opening effort sensitivity:

- in the "Min" position, the effort of the valve on its seat is increased, breathing resistance is high and inhalation is therefore harder
- in the "Max" position, the effort of the valve on its seat and breathing resistance are low. Inhalation is therefore easier and comfort is optimal.

**New design of the cover's vents enabling water to flow on the diaphragm:**

- Radial openings to avoid free-flows when diving in currents
- Openings widened to reduce peak inspiratory flow.

**New bubble deflector:** over-molded with "soft-touch" elastomer.

#### Over-molded purge cover

- Controls the regulator releasing air through the firm stop of the movement of the cover
- Easy regulator purging thanks to its wide surface area.

**Comfobite mouthpiece:** Mouthpiece with bridge (patented system): reduces jaw fatigue.

#### Detachable and reusable mouthpiece clamp:

Allows for a quick and tool-free mouthpiece change.

**Heat exchanger:** delays the freezing of the mechanism.

#### Deflector in the mouthpiece tube:

- Channels the airflow evenly in the mouthpiece during the inhalation phase
- Two-material deflector reduces its thickness and decreases the exhalation effort.

## PRODUCT REFERENCES, ACCESSORIES & KITS

	CPN		
LEG3ND ELITE YOKE	RG148004	EAN	3664372180004
		UPC	
LEG3ND ELITE DIN	RG148005	EAN	3664372180011
		UPC	
OCTOPUS	RS119005	EAN	3664372190454
		UPC	
LEG3ND ELITE YOKE KIT	RC124112	EAN	3664372187546
		UPC	
LEG3ND ELITE DIN KIT	RC124113	EAN	3664372187553
		UPC	
LEG3ND HP YOKE	RT146000	EAN	3664372190409
		UPC	
LEG3ND HP DIN	RT146001	EAN	3664372190416
		UPC	
LEG3ND ELITE LP	RS119004	EAN	3664372190447
		UPC	

	CPN		
Black Aqua Flex 3/8" MP 0.70 m hose with 2 protectors	RH119117	EAN	
		UPC	
Yellow Aqua Flex 3/8" MP 1 m hose with 2 protectors	RH119116	EAN	
		UPC	
Overbalanced diaphragm HP maintenance kit	RA121126	EAN	
		UPC	
Balanced LP maintenance kit	RA121128	EAN	
		UPC	