

miniwell®

Collapsible Water Filter

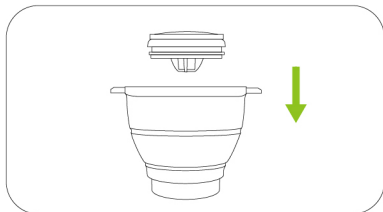
Manual For Model L901



B002159

How to back-wash the filter cartridge?

Due to the filtered pollutants and impurities increasing, the water flow will become smaller and smaller, in order to improve this situation, please back-wash the filter cartridge by following method.



1.Place the filter cartridge at the bottom of silicon body in the opposite direction and squeeze it tightly



2.Wash the cartridge slowly with hot water (above 80°C) for about 2-3 minutes.

Attention:

- 1.Please replace with the new filter cartridge if back washing has no effect.
- 2.The cartridge lifetime will be shortened if the quality of local water is poor.

Product Specification

Product name	Collapsible water filter
Product Model	L901
Product Size	L8.07 x W6.69 x H2.56 Inch (Folded) L8.07 x W6.69 x H6.30 Inch (Unfolded)
Net weight	440g
Filtration media	Composite Activated carbon fiber
Shell Material	Food-grade silicon and plastic
Filtered capacity	100 Gallons (About 8 weeks)
Operative Norm	Q/(GZ)GZLQ001-2017

Manufacturer: Guangzhou Lanquan Household Electric Appliance Co., Ltd.
Address: No.16, Guang Xing Hongmian Road, Nancun Town, Panyu District,
Guangzhou, Guangdong, China (Mainland)

Website: www.miniwell.net Email: service@miniwell.net

Product Illustration



Product Warranty

What is covered. Miniwell warrants this product and its hardware (not including the replaceable filter element) against defects in materials and workmanship under normal use for one year from the date of original purchase by the end user.

What is not covered. This limited warranty does not apply to normal wear and tear, breakage from dropping or contact with other objects, or damage from accidents, misuse (including failure to follow product documentation), neglect, disassemble, alterations, and external causes such as thermal or environmental conditions.

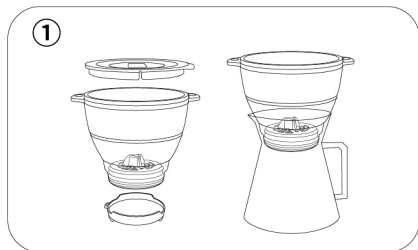
Exclusive Remedy. If a defect arises and you return the product during the 60 days warranty period, we will in our sole discretion and to the extent permitted by law either replace the defective part with a new or refurbished one that is functionally at least equivalent to yours, or refund all or part of the amount you paid.

You must present the following information to make a warranty claim:

- Model number of your product
- Your full address and contact information
- Your purchase receipt or other proof of the date purchased

To make a warranty claim, please contact by email: service@miniwell.net.

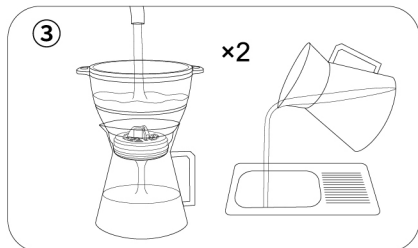
How to use?



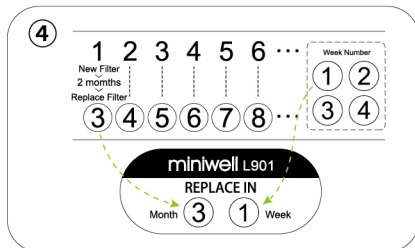
1. Unfold the water filter: Open the cover and take off the base, unfold the filter and place on the suitable container.



2. Pour water into the filter: Filter activation will be much quicker by filtering the water over 80°C during the first using.



3. Activate the filter cartridge: Discard the filtered water of the previous 2 times before drinking directly (The initial filter water is undrinkable).



4. Replacement reminder sticker: According to the first using date, select the appropriate month and week number (8 weeks later) and stick on the replacement reminder window. (E.g.: The first using date is 1ST JAN, please replace the filter on the first week of March.)

Attention:

- The lifetime of the filter cartridge depends on the local water quality.
- The top cover and filter cartridge cannot be cleaned in the dishwasher.
- If there is limescale on the top cover and silicon body (caused by carbonate in the water), please use the citric acid descaling cleaning solution to clean.
- Please keep the spare filter cartridges in the original packaging and stored in a cool place.
- The source of the filtered water should be municipal tap water treated by the water plant, or non-tap water that has been tested as safe and drinkable. If the relevant authority instructs that tap water must be boiled before drinking, then MINIWELL filtered water should be boiled too. However, when the drinking water requirement is no longer implemented, please clean the entire product and install a new filter cartridge before using. For the certain populations (such as immunocompromised persons or infants), it is generally recommended to boil water before drinking.