

# bodywand™

## curve

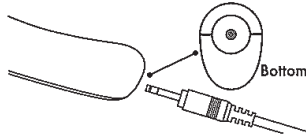
Compact Powerful  
Rechargeable  
Massager



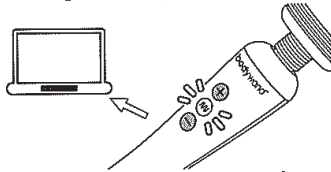
**IMPORTANT SAFETY INSTRUCTIONS:**  
All safety and operating instructions should be carefully read before use.

**CAUTION:** to reduce the risk of electric shock, do not remove cover or open the device. There are no serviceable parts inside.

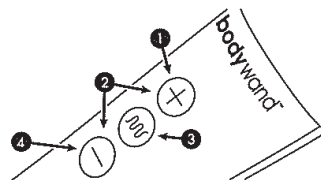
1. Plug the mini jack plug of the charging USB cord onto the socket at the bottom of the massager.



2. Plug the USB end of the cord into the USB port of your computer or other power source. A white light will be blinking on the middle button of the massager indicating battery charging.

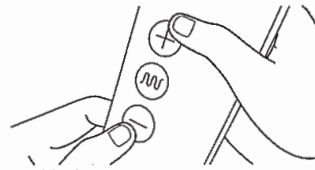
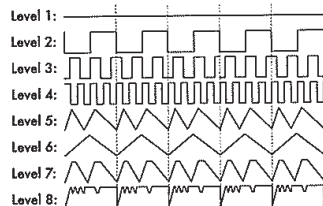


3. The light will become constant when the battery is fully charged. Unplug the USB charging cord. It takes approx 1 hour for full charge (depends on the power supply).



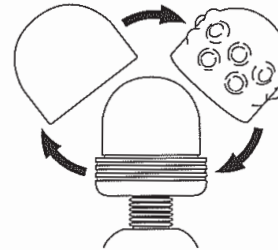
1. Pressing the + button on the massager will power-on the massager.
2. Use the + and - buttons to increase or decrease intensity. Buttons can be pressed or continuously held to increase or decrease intensity.
3. Press center function button to change the massage mode. Push once to move to the next program. In total there are eight (8) massage modes.
4. To power-off the massager, hold down the - button until massager reaches lowest speed and powers off.

### Vibration Levels:



### Travel lock:

- This Bodywand product features a travel lock for safe and convenient travel.
- Simultaneously press and hold the + and - buttons for 3 seconds. Flashing light will indicate the massager is locked.
- To unlock, simply repeat by pressing and hold the + and - buttons for 3 seconds. Flashing light will indicate the massager is unlocked.



Removable & interchangeable  
silicone head  
Hygienic, easy to clean and  
variety of sensations

**WARNING:** For adult use only. For external use only. Remove all scarves, neckties, necklaces, and jewelry before using this massager.

**IMPORTANT:** Any individual who may be pregnant, has a pacemaker, suffers from diabetes, phlebitis and/or thrombosis, is at an increase risk of developing blood clots, or who has pins/screws/artificial joints or other medical devices implanted in his/her body should consult with a physician before using a massaging device designed for home use.

1. Do not reach for an appliance that had fallen into water. Unplug immediately.
2. Do not use while bathing or in the shower.
3. Do not place or store appliance where it can fall or be pulled into a tub or sink.
4. Do not place in or drop into water or other liquid.
5. Always unplug this appliance from the electrical outlet immediately after use or before cleaning.

### CARE AND MAINTENANCE

Clean the massager with a soft, damp cloth. **DO NOT** clean with an alcohol or chemical-based cleaner.

### STORAGE:

Store at 20°C - 25°C  
Store at cool dry place.

### SPECIFICATIONS:

- Power - 3.7V/ 320mA USB 2.0
- Battery Life: Up to 1 hour use depending on speed and massage platform chosen.
- Waterproof: IPX5, for clearing the wand only, can not play under water.

### DISCLAIMER:

BODYWAND SHALL NOT BE LIABLE FOR INCIDENTAL OR CONSEQUENTIAL DAMAGES RESULTING FROM THE MISUSE OF THIS PRODUCT.



Generation Products™  
Horsham, PA 19044  
All Rights Reserved