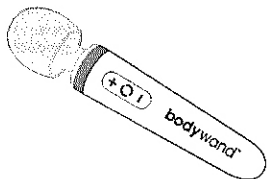


# bodywand™

Aqua Mini  
Rechargeable Massager

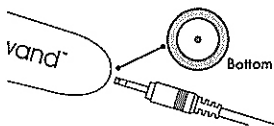


## IMPORTANT SAFETY INSTRUCTIONS:

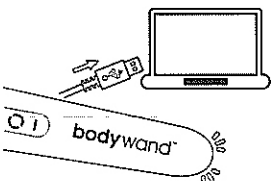
All safety and operating instructions should be carefully read before use.

**CAUTION:** to reduce the risk of electric shock, do not remove cover or open the device. There are no serviceable parts inside.

1. Plug the mini jack plug of the charging USB cord onto the socket at the bottom of the massager.



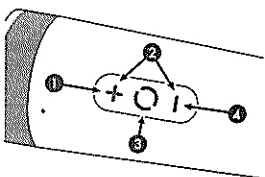
2. Plug the USB end of the cord into the USB port of your computer or other power source. A blue light will appear near the end of the massager indicating battery charging.



3. When the blue light turns off, battery is fully charged. Unplug the USB charging cord. It takes approx 1.5 hour for full charge (depends on the power supply).

## USING THE MASSAGER:

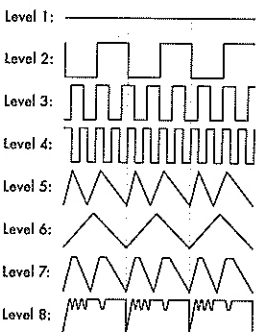
Use the massager to relieve tension, relax tired muscles and stimulate by pressing the massage head against different parts of the body, as needed.



The Bodywand Aqua Mini Rechargeable is designed to be used in the bath or shower, however is not intended for extended or excessive submersion.

1. Pressing the + button on the massager will power-on the massager.
2. Use the + and - buttons to increase or decrease intensity. Buttons can be pressed or continuously held to increase or decrease intensity.
3. Press center function button to change the massage mode. Push once to move to the next program. In total there are eight (8) massage modes.
4. To power-off the massager, hold down the - button until massager reaches lowest speed and powers off.

## Vibration Levels:



## CARE & MAINTENANCE:

- Clean the massager with a soft, damp cloth. DO NOT clean with abrasive or corrosive materials.
- DO NOT tamper with the product's internal components.
- DO NOT subject the product to excessive force, shock, dust, temperature or humidity.

**WARNING: FOR NOVELTY EXTERNAL USE ONLY. REMOVE ALL SCARVES, NECKTIES, NECKLACES, AND JEWELRY BEFORE USE.**

**IMPORTANT:** Any individual who may be pregnant, has a pacemaker, suffers from diabetes, phlebitis and/or thrombosis, has an increased risk of developing blood clots, has artificial joints or other "implanted" medical devices should consult with a physician before use.

## BATTERY PRECAUTIONS:

- Dispose of old batteries properly.
- DO NOT leave batteries where a child could potentially play and/or swallow.
- DO NOT attempt to dis-assemble the batteries.
- The item is not able to be used while charging.

## SPECIFICATIONS:

- Power - 3.7V/300mA USB2.0
- Battery Life: Up to 45 minutes of use depending on speed and massage pattern chosen.
- Waterproof Function: wand is not intended for extended or excessive submersion. After use in the bath or shower, make sure to completely and thoroughly dry before storage.
- For best product performance, limit bathtub use to 30 minutes. Excessive or prolonged underwater exposure can lead to damage or failure of the product.

## DISCLAIMER:

**BODYWAND AND ITS AFFILIATES SHALL NOT BE LIABLE FOR INCIDENTAL OR CONSEQUENTIAL DAMAGES RESULTING FROM THE MISUSE OF THIS PRODUCT.**

Generation Products™  
Horsham, PA 19044  
All Rights Reserved

UK Responsible Person:  
ArangaRanga UK LTD, 20-22 Wenlock Road, London,  
N17 6UJ, UK.  
Phone: +44 2037692960,  
E-Mail: UKresponsibleperson@arangaranga.com  
EU Responsible Person:  
ArangaRanga SL, Paseo de la Castellana 194, Madrid,  
28046, Spain.  
Phone: +34 910054258,  
E-Mail: EUresponsibleperson@arangaranga.com



This product is CE certified.  
CE2200