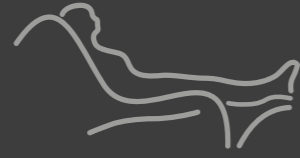




Repose

Specialist Seating Solutions

Specialist Seating



Repose are **proud of our family values** which are at the very heart of everything we do.

This has enabled us to grow significantly since 1999 to be a **major supplier** in the marketplace.

We've created an established brand with a reputation for **exceptional quality and service**.



Lisa Wardley
Managing Director



Ergonomics

Expert specialist knowledge is a crucial aspect in the design of any chair.

Kate Sheehan is well respected for her work in seating, helping people to select chairs that suit their specific needs and environments. We have been utilising this expert knowledge in the design of our chairs to deliver the ultimate customer comfort and satisfaction, so that people are truly able to experience the benefits of good seating.

Kate Sheehan
Independent Occupational Therapist



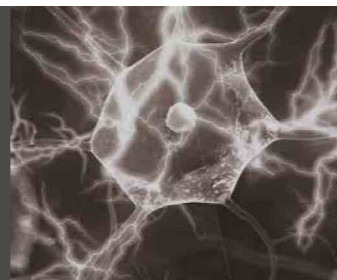
Achieving good posture (Always ensure that all measurements are accurate)

Anterior pelvic tilt	Consider the use of tilt in space in conjunction with a reclined backrest to support a neutral pelvic position.
Posterior pelvic tilt	An angle and height adjusting footplate may be useful in allowing the client to apply appropriate and directed pressure through their feet (foot loading) to support a more neutral position. Seat depth is important in creating this neutral position. Tilt in space supports pressure redistribution and alleviates tension which will also help with pelvic positioning.
Pelvic rotation	Seat width is crucial to ensure that the client is supported sufficiently. Additional lateral postural supports may be required to help bring the pelvis into a more neutral position.
Wind-sweeping	Essentially this is the abduction / external rotation of one hip and adduction / internal rotation of the other. It is important to determine whether this is fixed or correctable. If fixed you need to ensure that the client is supported and skin integrity maintained. If correctable then the goal should be for the seat to support this correction. Both can be achieved using the angle of recline and leg rest angle adjustment in conjunction with cushions to support midline alignment.
Lordosis	Seat height and depth are critical to ensure appropriate foot loading, ensuring that anterior pelvic tilt is not created. Consider the use of a profile headrest with a waterfall back cushion for additional postural support and comfort.
Kyphosis	As with Lordosis the critical elements are accurate sizing, in particular depth and height, alongside use of a waterfall backrest.
Pelvic obliquity	This can often be caused by an unstable base so consider the seat cushion options. Ensure that the armrests are not too low or high so that the client can support themselves laterally which makes seat width critical. Consider a backrest such as - the comfort lateral back (page 18), but determine whether the obliquity is fixed or correctable as trying to correct the posture when fixed could cause unnecessary discomfort to the client.

Sensory Processing

This refers to the client's ability to receive sensory stimuli and process them in a way which supports appropriate expression of said stimuli. For example, the client may not be able to tolerate the feeling of certain materials or sounds during movement of the chair.

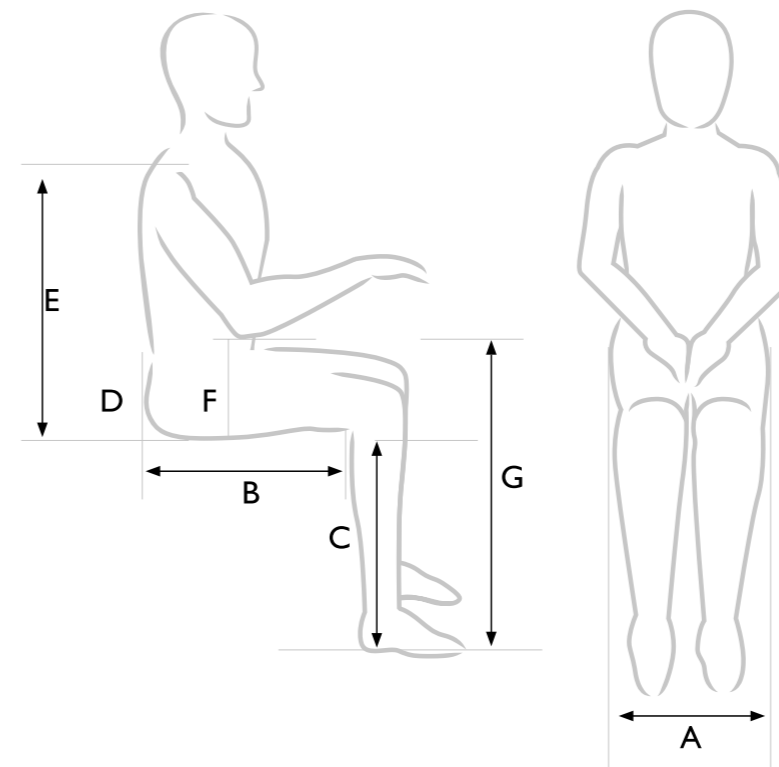
Consider material, control and motor options to minimise impact of negative sensory stimulation.



Required measurements

It is important that the measurements you take are consistent, accurate and clear to the seating provider. Be clear whether the measurements you are providing are that of the client or the chair you require, they are different.

Use inches or centimeters as is your preference, but again make that clear to the provider and if using a material measure make sure that the measurements are 'straight line' rather than being shaped around the client as this will give you a different result.



Measurements

A	
B	
C	
D	
E	
F	
G	

Specialist seating at a glance

Pricing and full details of our specialist seating are available on request

	Page	Weight limit (stone/KG)	Leg rest weight limit (stone/KG)	Different back styles	Removable back cushions	Pressure care seat options	Fabric options	Size options	Portering chair large HD Wheels	Tilt in Space	Rise to feet function	Various mechanism options	Electric	D rings fitted for lap strap	Wireless option
Arden	8	50/317	25/160	✗	✓	✓	✓	✓	✗	✓	✓	✗	✓	✗	✗
Boston	10	20/130	9/60	✓	✓	✓	✓	✓	✓	✓	✗	✗	Optional	✓	Std on electric
Brooklyn	12	20/130	9/60	✓	✓	✓	✓	✓	✓	✓	✗	✗	✓	✓	Optional
C-air	14	25/160	9/60	✓	✓	✓	✓	✓	✗	✓	✓	✓	✓	✗	Optional
Harlem	16	25/160	9/60	✓	✓	✓	✓	✓	✓	✓	✗	✗	✗	✓	✗
Haven	18	20/130	9/60	✗	✓	✓	✓	✓	✗	✓	✓	✓	✓	✗	Optional
Madison	20	20/130	9/60	✓	✓	✓	✓	✓	✓	✓	✓	✗	✓	✗	Optional
Melrose	22	20/130	9/60	✓	✓	✓	✓	✗	✓	✓	✗	✗	✗	✓	✗
Multi Bari	24	40/254	25/160	✓	✓	✓	✓	✓	✗	✗	✓	✗	✓	✗	✗
Multi C-air	26	20/130	9/60	✓	✓	✓	✓	✓	✗	✓	✓	✓	✓	✗	Optional
Protac Sensit	28	n/a	n/a	✗	✗	✗	✓	✓	✗	✗	✗	✗	✗	✗	✗
Stargazer	30	25/160	9/60	✗	✗	✗	✓	✗	✗	✗	✗	✗	✗	✗	✗
Stamford	32	20/130	9/60	✗	✗	✓	✓	✗	✗	✓	✓	✓	✓	✗	Optional
Riser Recliner	34	70/444	25/160	✓	✓	✓	✓	✓	✗	✓	✓	✓	✓	✗	✓



Beautifully
Made in Britain



The Arden is an innovative Bariatric chair that through its unique four motor technology is able to combine Independent Tilt in Space (TIS) movement with Independent Backrest Recline, Independent Leg Rest and Rise movements. In addition, it comes with a low-profile seating option and an extendable leg rest. This 50 stone chair, with a 25 stone leg rest capacity, offers luxurious comfort with maximum adaptability.

For more information on the **ARDEN** contact us for the full brochure.

Key features at a glance:

- Four motor mechanism with independent Tilt in Space, rise, backrest recline and leg rest movements
- Removable and adjustable waterfall back cushion
- Fixed or optional interchangeable pressure management seat cushion and chaise
- Optional leg rest extension
- 16" (406mm) low profile seating height available
- Seat and leg rest generously padded with memory foam chaise
- Heavy duty glides are built in as standard
- Simple to use handset
- Handset loop and deep side pocket on RHS of the chair
- 50 stone chair (317kg), with a 25 stone (158kg) leg rest capacity

Additional options:

- High wear protection covers in matching fabric
- Positioning of the handset loop and pocket
- Arm padding upgrades
- Carer handset loop on the back of the chair
- Additional safety features
- Range of headrests.

The Arden chair has been designed and manufactured to meet the needs of the plus size client with particular emphasis on the leg rest to support large and/or oedematous legs.

Suitable for conditions:

- Plus size clients





Beautifully
Made in Britain



The Boston has a unique combination, of Tilt in Space and independently controlled back recline and leg elevation, so that carers can constantly adjust the user's position to relieve pressure and provide all-day comfort. Engineered to meet the needs of semi-ambulant and non-ambulant users with a range of additional support features to modify the chair to individual needs. Aesthetics have been at the forefront of the design to reduce stigma and increase acceptance. The Boston is available in either a manual or electric model.

For more information on the **BOSTON** contact us for the full brochure.

Key features at a glance:

- Independent Tilt in Space, independent backrest recline, independent leg rest adjustment
- Choice of interchangeable and adjustable back cushions
- Choice of interchangeable pressure management seat cushions
- Full seat cover to remove pinch points and increase comfort
- Seat depth adjustment
- Full profile leg rest for added support
- Optional height and angle adjustable footplate
- Heavy-duty push handle with rubber grips
- Wing handles for ease of manoeuvring
- D-rings fitted as standard
- Four heavy duty lockable castors
- Pocket on rear for client case documents
- Removable chaise and footplate covers
- The electric model comes with a rechargeable battery system for mains free usage.

Additional options:

- Replacement chaise and footplate cover
- Lap strap and pad
- Seat depth adjustment pads
- Wedge adjustment blockers
- Detachable footplate pad for extra comfort
- Range of headrests.

The Boston is ideal for life limiting conditions, palliative care, deteriorating conditions and those clients with have issues with agitation and wandering.

Suitable for conditions:

- Parkinson's Disease
- Motor Neurone Disease
- Dementia
- Multiple diagnoses





Beautifully
Made in Britain



The Brooklyn porter chair comes with all the support and comfort features of our healthcare chairs but with the added advantage of an electric, single tilt in space recline, for ease of movement. Controlled from an easy to use handset the chair can be smoothly reclined and repositioned by the user or the carer.

For more information on the **BROOKLYN** contact us for the full brochure.

Key features at a glance:

- Choice of interchangeable back cushions
- Choice of interchangeable pressure management seat cushions
- Single Motor Tilt in Space recline only mechanism
- Seat depth adjustment
- Sliding footplate with removable cover
- D-rings fitted as standard
- Heavy-duty push handle with rubber grips and a hook for the handset
- Seat and leg rest generously padded with memory foam and with a removable cover
- Simple to use handset
- Four heavy duty lockable castors.

Additional options:

- Full length arm covers
- Lap strap and pad
- Replacement chaise cover and memory foam
- Range of headrests
- Handset loop on arm
- Accupak rechargeable battery system for mains free operation.

The Brooklyn has been designed to be moved around a care environment to reduce the amount of moves a client has to make but to also encourage independence by supporting sit to stand transfers and rest and relaxation. The chair can be easily altered to meet the individual needs.

Suitable for conditions:

- Frail elderly
- Rheumatoid arthritis
- Neurological conditions
- Stroke





Beautifully
Made in Britain



The C-air is one of our most popular healthcare chairs, because it combines bespoke construction, being built to a user's specific requirements, with a range of pressure management and posture solutions providing the comfort and style of a chair that would fit in any environment.

For more information on the **C-AIR** contact us for the full brochure.

Key features at a glance:

- A bespoke rise recliner chair made to fit the user
- Choice of fixed, or interchangeable and adjustable back cushions
- Choice of interchangeable pressure management seat cushions
- Choice of rise recliner mechanisms
- Seat depth adjustment
- Choice of arm styles
- Seat and leg chaise generously padded with memory foam
- Durable castors built-in as standard
- Simple to use handset with loop and pocket on side of chair.

Additional options:

- Covers for high wear areas
- Replacement chaise cover and memory foam
- A choice of heavy duty lockable castors or glides
- Additional safety features
- Range of headrests.

An all purpose healthcare chair that supports the management of good pressure and posture management.

Suitable for conditions:

- Frail elderly
- Osteoarthritis
- Rheumatoid arthritis





Beautifully
Made in Britain



Every aspect of the Harlem Porter has been researched and engineered to provide a feeling of comfort, safety and security. Each element of the design is tailored to support those with conditions associated with severe or involuntary movement. It is also an excellent porter chair for the frail and elderly.

For more information on the **HARLEM** contact us for the full brochure.

Key features at a glance:

- Choice of interchangeable back cushions
- Choice of interchangeable pressure management cushions
- Independent back rest recline
- Seat angle adjustment
- Seat depth adjustment
- Heavy-duty push handle with rubber grips
- Deep padded seat area
- D-rings fitted as standard
- Sliding footplate with a central castor for maximum stability
- Four heavy duty lockable castors.

Additional options:

- Leg support block and connecting straps
- Lap strap and pad
- Full length arm covers
- Range of headrests.

The Harlem was designed with the support of experts in the field of Huntington's disease to manufacture a chair that provides a feeling of comfort, safety and security. The key to its success is its robust construction and the ability to replace all parts of the chair if required.

Suitable for conditions:

- Huntington's disease
- Clients with Ataxic movements, such as Cerebral Palsy





Beautifully
Made in Britain



The Haven is a healthcare rise recliner with unique air pressure cushioning in the lower backrest, seat cushion and leg rest all aimed at delivering significant pressure management. The air cushions work constantly to evenly distribute the user's weight ensuring that there are no pressure points that might restrict circulation. An ideal chair for any healthcare environment, it comes in three sizes.

For more information on the **HAVEN** contact us for the full brochure.

Key features at a glance:

- Unique air bag construction used in the backrest, seat cushion and leg rest
- Split contoured back with Dacron fibre filled head cushion for easy adjustment
- Removable back and seat cushions for cleaning
- Chaise to support pressure management
- A choice of either a Single or Dual Tilt in Space mechanism
- Durable castors built-in as standard
- Simple to use handset with pocket on the RHS side of the chair.

Additional options:

- Coolform Gel in the arm tops
- Handset loop and pocket positioning
- Covers for high wear areas
- Lockable castors
- Glides for use on wooden or laminated floors
- Additional safety features
- Range of headrest

The Haven riser recliner chair has been designed to provide the highest level of pressure relief with its insitu air cushion in both the seat and legs area of the chair. The chair also comes with a rise option to maintain client independence when they wish to get up and walk, choice and control to change position to support rest and purposeful activity.

Suitable for conditions:

- Motor Neurone disease and other neurological conditions
- End of life clients e.g. cancer
- Frail elderly





The Madison Porter chair comes with a Dual Tilt in Space rise recline mechanism maximising the postural and pressure management options for the carer with independent backrest and leg rest movement as well as rise function to aid ease of standing. This chair aims to encourage and support independence and choice for users.



Beautifully
Made in Britain



For more information on the **MADISON** contact us for the full brochure.

Key features at a glance:

- Choice of interchangeable back cushions
- Choice of interchangeable pressure management seat cushions
- Dual Motor Tilt in Space rise and recline mechanism
- Optional seat depth adjustment
- Heavy-duty push handle with rubber grips
- Seat and leg rest generously padded with memory foam and with a removable cover
- Simple to use handset with hook for safety
- Four heavy duty lockable castors.

Additional options:

- Sliding footplate
- Full length arm covers
- Handset loop on arm
- Replacement chaise cover and memory foam
- Range of headrests
- Accupak rechargeable battery system for mains free operation.

The Madison chair has been designed to support safe manoeuvring and reduce the number of moves required for those clients who can become distressed or have significant pain during hoisting

- Suitable for conditions:**
- Parkinson's Disease
 - Motor Neurone disease
 - End of life clients e.g. cancer





Beautifully
Made in Britain



The Melrose has been specifically engineered to meet the comfort needs of individuals with pressure management issues and to provide adaptable support for neurological and postural conditions. With a unique combination, of Tilt in Space and independently controlled back recline and leg elevation, carers can constantly adjust the user's position to relieve pressure and provide all-day comfort.

For more information on the **MELROSE** contact us for the full brochure.

Key features at a glance:

- Independent Tilt in Space
- Independent backrest recline
- Independent leg rest adjustment
- Choice of interchangeable and adjustable back cushions
- Choice of interchangeable and adjustable pressure management seat cushions
- Seat depth adjustment
- Seat width adjustment
- Choice of adjustable footplates
- All covers are fully removable for cleaning or replacement
- Heavy-duty push handle with rubber grips
- Contoured and padded leg rest to support legs from splaying
- D-rings fitted as standard
- Four heavy duty castors, lockable at rear.

Additional options:

- Range of replacement covers
- Replacement arm pads
- Lap strap and pad
- Range of headrests.

The Melrose has been designed with a high level of pressure and postural features and benefits to meet the needs of those with significant symptoms that affect their skin integrity and postural needs.

- Suitable for conditions:**
- Parkinson's Disease
 - Motor Neurone disease
 - Life limiting conditions





Designed for comfort and pressure management control, the Multi Bari has removable waterfall back cushions that can be individually positioned and re-positioned for comfort with the option to add or remove fibres to alter their firmness. Couple this with individually positioned back blockers offering further lumbar adjustments, plus the option for the seat and width measurements to be built to the user's requirements, and this chair is ideal for people seeking deep comfort and enhanced posture control.



Beautifully
Made in Britain



For more information on the **MULTI-BARI** contact us for the full brochure.

Key features at a glance:

- Standard Dual Motor rise and recline mechanism
- Overall 254kg (40 stone) weight limit, and elevated leg rest weight limit of 160 kg (25 stone), ensures maximum support
- Adjustable and removable waterfall back cushions
- Back blockers for additional lumbar support
- Choice of interchangeable pressure management seat cushions
- Made to measure seat height, width and depth
- Flat wide arms for deep comfort and support
- Seat and leg rest generously padded with memory foam and removable cover
- Loop for handset control and deep side pocket
- Heavy duty glides are built in as standard

Additional options:

- Full length arm covers
- Head and seat covers
- Replacement chaise cover and memory foam
- Additional adjustment blockers for back cushions
- Enclosure skirt
- Range of headrests.

The Multi Bari rise and recline chair has been designed to meet the needs of plus size client, who need some support to stand independently and to manage their pressure care. The chair supports the raising of the legs for lower limb fluid management and to provide additional comfort and support in a reclined position.

Suitable for conditions:

- Plus size clients
- Plus sized client with oedematous legs
- Plus sized client who struggle to get from a seated to standing position to walk





The success of the Multi C-air lies in its complete adaptability. This rise recliner puts the healthcare team, in the home or the ward, in ultimate control, providing a full range of options to tailor the chair precisely for each individual's comfort and care.



Beautifully
Made in Britain

For more information on the **MULTI C-AIR** contact us for the full brochure.

Key features at a glance:

- Choice of interchangeable back cushions
- Choice of interchangeable pressure management seat cushions
- Choice of rise and recline mechanisms with the option of VAL technology
- Seat depth adjustment
- Seat height adjustment
- Seat and leg rest generously padded with memory foam
- Heavy duty glides built-in as standard
- Simple to use handset.

Additional options:

- Loop for handset control
- Full length arm covers
- Replacement chaise cover and memory foam
- Additional safety features
- Range of headrests.

The Multi C Air is ideal for clients whom require pressure and postural management whilst wanting to be supported to stand independently.

Suitable for conditions:

- Stroke
- Muscular sclerosis
- Frail elderly
- Lower limb oedema





The weighted Protac balls give a light pressure distributed across numerous points, helping the brain to register the body to a far greater extent than through uniform pressure. The balls will move through slight changes in position and the skin is continuously stimulated in new ways and updates the brain about the body and surrounding environment.



For more information on the **PROTAC** contact us for the full brochure.

What our Expert says:

The Protac products contain the unique Protac balls, which provide a deep touch pressure and constant contact with the body to provide tactile sensory input for both adults and children of all ages. Sensory stimulation helps relieve restlessness in the body and head.

These unique sensory integration products have been used by people with many physical disabilities and sensory impairments and have gained international usage in many environments including care homes, hospitals, hospices, charities, schools and special schools, psychiatric departments, waiting rooms, sensory rooms, treatment and therapy rooms, as well as in people's homes.

Suitable for conditions:

- ADHD
- Anxiety
- Autism
- Mental Health and Neurological Disorders
- Development Disorders
- Multiple Sclerosis
- Parkinson's
- Sensory Disturbances
- Sleep Disorders.





Beautifully
Made in Britain



Making the most of available space, the compact Stargazer allows rooms to become multi-functional; an innovative solution to the problem of short term bed provision where space is minimal. An extremely comfortable seating and sleeping solution for visitors at a patient's bedside, affording them a very comfortable night's rest as they support family or friends.

For more information on the **STARGAZER** contact us for the full brochure.

Key features at a glance:

- Modern design and colour choices that will complement any environment
- Smooth flow pull and push action
- Fully washable, bleach cleanable, anti-MRSA vinyl upholstery, in various designs and colours of your choice
- Built in lockable castors for easy movability for cleaning purposes
- Deep Reflex foam cushioning to give the ultimate comfort when sitting or sleeping for long periods
- Easy pull mechanism releases the bottom section of the bed, to provide a comfortable sitting or resting position with a long leg rest
- To extend further, simply pull the base out a little further and tilt the headrest down to provide a full, flat adult length bed

Ideal for:

- Maternity Units
- Childrens Ward
- Care Homes
- Hospice
- Relatives Room

The Stargazer is a bed/chair to enable a client's loved ones to be able to sleep or rest comfortably next to them and to provide the essential physical and emotional support they need at a critical time during the necessary medical treatment.





Beautifully
Made in Britain



The Stamford is one of our healthcare recliner chairs, designed for everyday comfort with a contoured support back and a choice of electric or manual Tilt in Space mechanisms. Ideal for general use next to a bed or in the lounge of a care home or hospital.

For more information on the **STAMFORD** contact us for the full brochure.

Key features at a glance:

- Choice of an electric Single Motor Tilt in Space mechanism recline only or recline with a rise function.
- Choice of a manual Tilt in Space
- Seat cushion fixed as standard
- Contoured back designed for every day comfort
- Four heavy duty lockable castors.

Additional options:

- Choice of pressure management seat cushions
- Range of headrests
- Accupak rechargeable battery system for mains free operation
- Full length arm covers.

The Stamford has been designed to meet the needs of clients in hospital who need a chair for out patient treatment or a bedside chair for inpatient care. It has been designed to provide comfort and support; it can be cleaned with ease.

Suitable for conditions:

- Client on dialysis
- Clients with cancer under going chemotherapy
- Use on orthopaedics and general medical wards.



Riser recliner



Our broad range of bespoke riser recliner chairs come in an array of sizes, styles, colours and movements, all bespoke to your requirements, to ensure the chair is manufactured to the correct size and specifications needed.



Beautifully
Made in Britain



For more information on the **RISER RECLINER** contact us for the full brochure.

Key features at a glance:

- Bespoke sizing from seat heights of 14" to 22" and up to a seat width of 34"
- 12 different styles of chairs
- 8 different mechanism movements
- Various mechanism user weights from 15 stone up to 70 stone
- Vast array of fabric styles from domestic, leather and healthcare waterproof
- Luxury seating options, with pressure care if required

Additional options:

- Optional extras available on all models i.e. Heat & massage, Wireless chair options and USB charging ports to reading lamps.

An all purpose rise recline chair that supports the management of good posture with the option to upgrade the pressure management.

- Suitable for conditions:**
- Frail elderly
 - Osteoarthritis
 - Rheumatoid Arthritis





Repose Furniture Limited

Attwood House
Cokeland Place
Cradley Heath
West Midlands
B64 6AN

Tel: 0844 7766001 / 01384 567401

Fax: 0844 7766002

Email: info@reposefurniture.co.uk

www.reposefurniture.co.uk



Beautifully
Made in Britain

