

Textured Knits

Espedito

p.21

At Yoke

220 (260, 340, 420, 500) sts in total.

Diamantine

p.30

Please, do not consider the last rows from the Neckline section, "Next Rnd: K all sts".

The Back neck shaping section is worked over the Ribbing pattern.

Viana

p. 40

At Neckline:

Next Row (RS): K2, (p1, k1) 3 times, k to last 8 sts, (k1, p1) 3 times, sl2 wyib.

At Back neck shaping

Short Row 1 (RS): K2, (p1, k1) 3 times, k 60 (62, 68, 72, 76) (76, 84, 84, 84) sts, w&t.

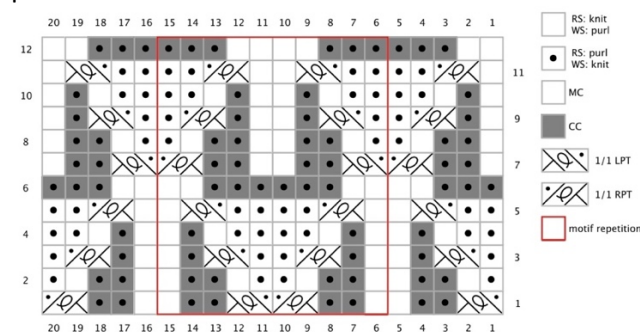
At Joining Front Plackets and Increase Row/Rnd: K2, (k1, p1) 3 times

Cobogó

p. 49

1/1 RPT: Slip 1 st to cn and hold in back, k1 tbl, p1 from cn.

p.55



Milhazes

p. 61

28 sts x 44 rows to 5.5" X 6" / 14 cm X 15 cm (one chart repetition) on US 7 / 4.5 mm needles in st pattern, after blocking.

p. 62

CO 172 (196, 210, 228, 260) (278, 284, 324, 346) sts.

Change to US 7 / 4.5 mm needles and work as follows: Next Row (RS): K2, *k1, p1*, repeat *-* over 14 (16, 18, 14, 16) (18, 14, 16, 18) sts, work row 1 from the chart to last 16 (18, 20, 16, 18) (20, 16, 18, 20) sts, *k1, p1*, repeat *-* to last 2 sts, sl2 wyif.

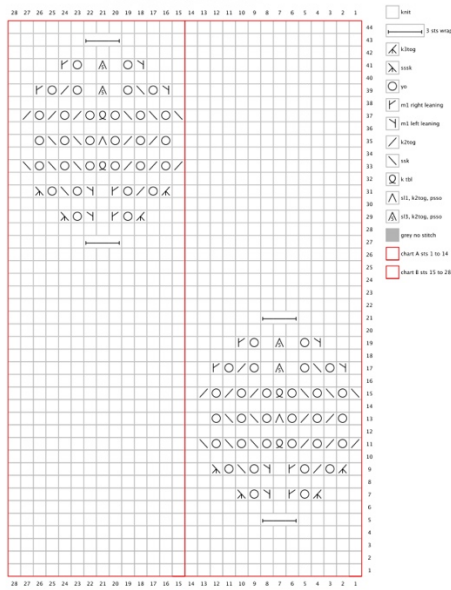
Next Row (WS): P2, *k1, p1*, repeat *-* over 14 (16, 18, 14, 16) (18, 14, 16, 18) sts, work row 2 from the chart to last 16 (18, 20, 16, 18) (20, 16, 18, 20) sts, *k1, p1*, repeat *-* to last 2 sts, sl2 wyif.

p. 65

Chart A

10th stitch at row/rnd 9: it is an SSK instead of a M1L.

The white square represents knit sts at RS and purl sts at WS.

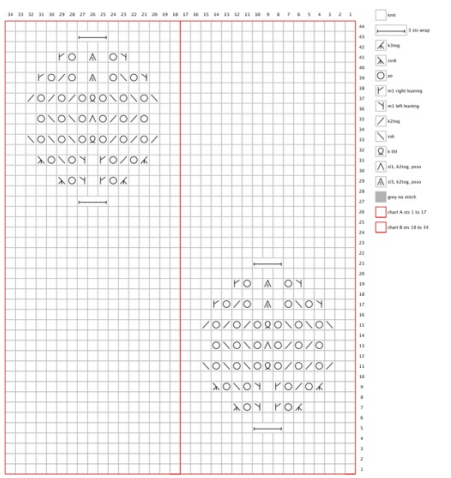


p.67

Chart C

6th stitch at row/rnd 9: it is an k2tog instead of a M1R.

The white square represents knit sts at RS and purl sts at WS.



Lygia

p. 74

Inc Row (WS): P3, SM, yo, *PM, p18, repeat *-* **8 times**, SM, p1 (center st), SM, *PM, p18, repeat *-* **8 times**, yo, SM, sl3 wyif. You should have 297 sts.

Franzidinho

p.144

At YOKE.

Change for US 5 / 3.75 mm needles.

Next Rnd: K all sts.

Mesclada

p.167

Short Row 7: K to end.

Next Row 8: P all sts.

p.171

Repeat last 2 rows more 4 (3, 4, 5, 5) (5, 5, 5, 5) times. 10 (8, 10, 12, 12) (12, 12, 12, 12) total rows.