

# Grand Shetland Adventure

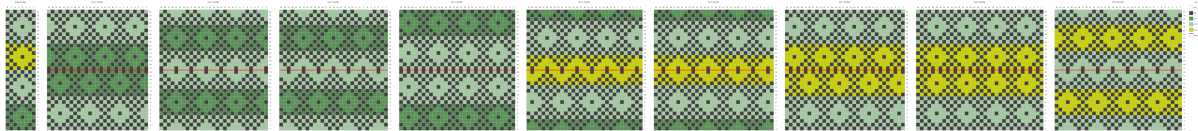
## – Mary Jane Mucklestone, Gudrun Johnston

### ISLAND TO ISLAND VEST

p. 73

Note: Island to Island is designed in a vintage style. Odd numbered sizes do not match up “diamond to diamond” at the shoulders like the even sizes, they finish off-set with a zig-zag. Here are charts that show pretty shoulder joins for every size. In some cases you may want to eliminate a row or add one for a join that pleases you.

*The charts show the last 16 rows of the Left front shoulder below the red line, and the last 16 rows of the Left back shoulder above the red line, how they would look when joined.*



### STANEYDALE SCARF

p.40

**Set-Up Row 1 (RS):** K 1, \*k1, p1; rep from \* to last 2 sts, k2.

p. 42

**Eyelid lace chart written instructions**

**Row 2 and all ws rows:** K9, \*(p1, k1) x3, p1, k9; rep from \* to end of row.

### LUCKY LINES PULLOVER

p. 64

**Chart A**

Stitch numbers should begin from the first stitch (and end on stitch 24).

### PEERIE SHOP CARDI

p. 90 second column

Sizes 5-9

Should read “Proceed to Shape Back Yoke with German Short Rows” not All Sizes Resume.

p. 94

**Yoke Chart Sizes 1-5**

Round 3 - M1 in stitch column 5, as indicated on the chart for sizes 6-8.

Both charts should be identical through Round 7.

### LING V-NECK

p. 123

**Neckband - correction in red**

... p&k 45 (45, 45, 45, 45) (57, 57, 57, 57) sts for back neck, then p&k 6 sts for left shoulder. [156 (156, 180, 180, 180) [204, 204, 216, 216] sts]

p. 124

**Top left**

Omit “Dec Round”

p.125

**Colorwork Chart**

Round 5: st 68 & 71 should be CC2, st 69 should be CC3.

Note: Remember to continue working repeat outlined in red.

**HERITAGE YOKE PULLOVER**

p. 161

**Colorwork Chart**

On row 61, stitches 6+7 are shown in CC4. These stitches should be worked using CC3.