

Grand Shetland Adventure

– Mary Jane Mucklestone, Gudrun Johnston

STANEYDALE SCARF

p.40

Set-Up Row 1 (RS): K 1, *k1, p1; rep from * to last 2 sts, k2.

p. 42

Eyelid lace chart written instructions

Row 2 and all ws rows: K9, *(p1, k1) x3, p1, k9; rep from * to end of row.

LUCKY LINES PULLOVER

p. 64

Chart A

Stitch numbers should begin from the first stitch (and end on stitch 24).

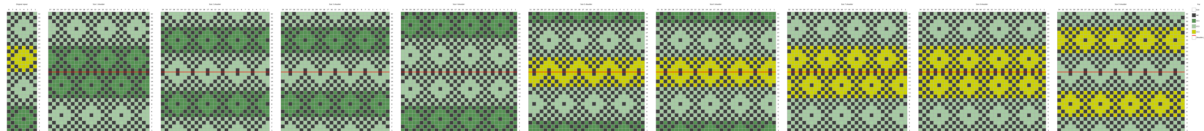
ISLAND TO ISLAND VEST

p. 73

Note: Island to Island is designed in a vintage style. Odd numbered sizes do not match up “diamond to diamond” at the shoulders like the even sizes, they finish off-set with a zig-zag.

Here are charts that show pretty shoulder joins for every size. In some cases you may want to eliminate a row or add one for a join that pleases you.

The charts show the last 16 rows of the Left front shoulder below the red line, and the last 16 rows of the Left back shoulder above the red line, how they would look when joined.



PEERIE SHOP CARDI

p. 94

Yoke Chart Sizes 1–5

Round 3 - M1 in stitch column 5, as indicated on the chart for sizes 6-8.

Both charts should be identical through Round 7.

HERITAGE YOKE PULLOVER

p. 161

Colorwork Chart

On row 61, stitches 6+7 are shown in CC4. These stitches should be worked using CC3.