

# Technical data sheet

## wedi *Tools* | fixings set

- For mechanically fixing heavy objects to tiled or plastered wedi building boards



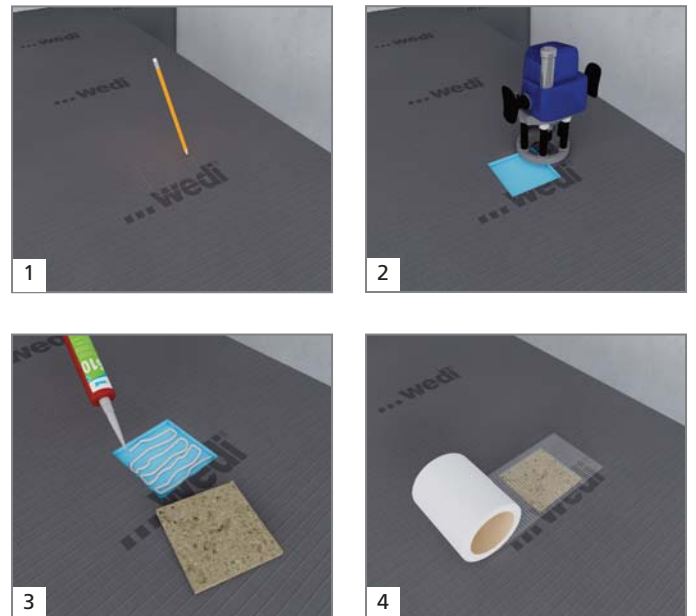
### General product description

Mounting plate to fix heavy objects to tiled or plastered wedi building boards or wedi frameworks. Thanks to its resistance against humidity, the material may also be applied in highly demanding wet areas.

### Applications

For mounting of heavy objects such as heated towel racks, handles, cabinet elements or glass doors on tiled or plastered wedi walls/constructions.

### Processing steps



\* Information sur le niveau d'émission de substances volatiles dans l'air intérieur, présentant un risque de toxicité par inhalation, sur une échelle de classe allant A+ (très faibles émissions) à C (fortes émissions).

## Technical properties

---

Bonding tensile value of mounting board at 100 x 100 x 8 mm wedi construction board	800 N
Bonding tensile value of mounting board at 400 x 50 x 15 mm wedi construction board	1600 N
Resistance to withdrawal of screws with a 4.5 mm thick wooden screw with 8 mm material thickness	ca. 400 N
Resistance to withdrawal of screws with a 4.5 mm thick wooden screw with 15 mm material thickness	ca. 1000 N
Swelling in thickness after 24 h storage in water	ca. 1.1 %
Coefficient of linear expansion	ca. $28.375 \cdot 10^{-6} \text{ K}^{-1}$
Building material class according to	B2

If the adhesive value is exceeded by the screw retention value with the use of multiple screws per mounting plate then the adhesive value should be taken into account as a limiting factor.

## Packing

---

2 boards, 400 x 50 x 15 mm, and 12 boards, 100 x 100 x 8 mm, packed in a box.

## Storage

---

Store dry.

## Safety notice

---

none