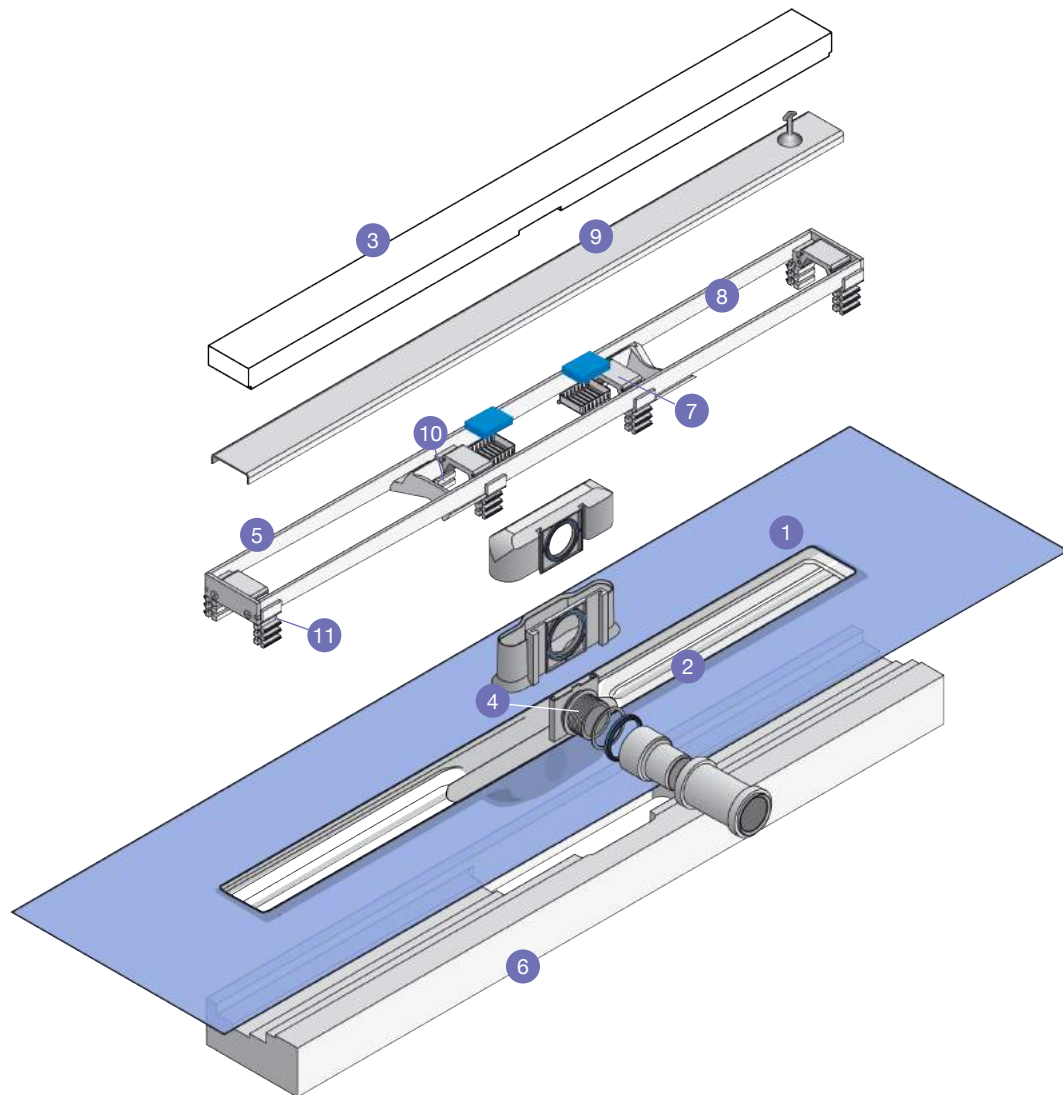


J-DRAIN

How to install in solid floors

In conjunction with Jackoboard single fall Sloping Boards and Jackoboard Plano Wall and Floor Boards to create minimalist level entry showers



System Components

- | | |
|---|---|
| 1 ABS drain with pre-bonded waterproof membrane | 7 Grate lifter |
| 2 Water Trap/Siphon | 8 Grate frame |
| 3 Tile Guide/debris protector | 9 Grate (reversible for tiling if required) |
| 4 Threaded drainage pipe connector (40mm/1.5") | 10 16 x riser blocks 5mm |
| 5 2 x PVC corner seals | 11 8 x riser blocks 2.5mm |
| 6 2 x polystyrene support blocks | |
-

Planning and Preparation

Prior to purchasing your J-Drain you should have carefully thought about your desired shower room layout and decided the best route for your waste pipe from the J-Drain body. If you haven't then now is the time to do so!

Jackoboard Sloping Boards

Jackoboard Sloping Boards are single fall boards specially designed to work with J-Drains. They are available in three sizes: 1000mm x 1000mm sloping from 20mm to 7mm, 1200mm x 900mm sloping from 20mm to 8mm and 1600mm x 1000mm sloping from 25mm to 7mm. They avoid the time-consuming and messy process of setting a screed to a fall and are easily trimmed to size.

Waterproofing the walls and floors

Before installing the J-Drain and the Jackoboard Sloping Board we strongly recommend lining the walls in the immediate shower area with Jackoboard Plano Wall Boards and sealing all joints with Jackoboard Waterproof Sealing Tape.

This will give you a totally waterproof showering area with the complete peace of mind this brings. Separate installation guides for this are available from Jackson UK on request.

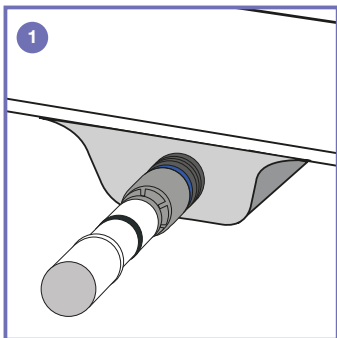
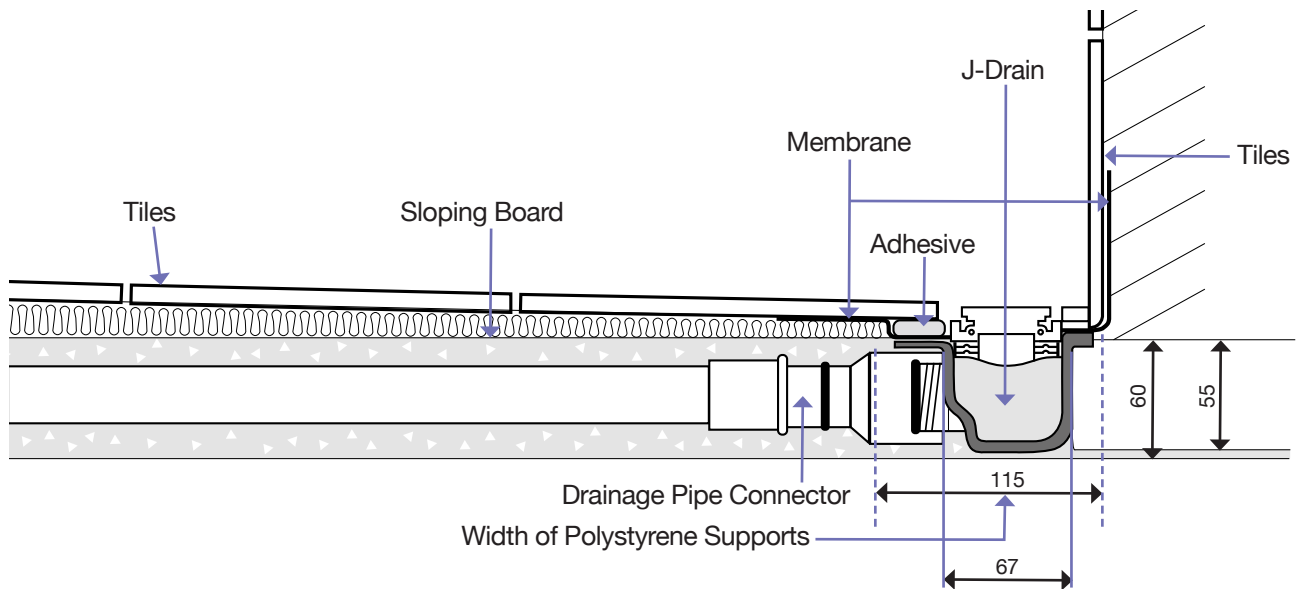
Heights and levels

If you decide to create the fall on the solid floor with Jackoboard Sloping Boards you might wish to overlay the rest of the floor with Jackoboard Plano Boards to create a level access.

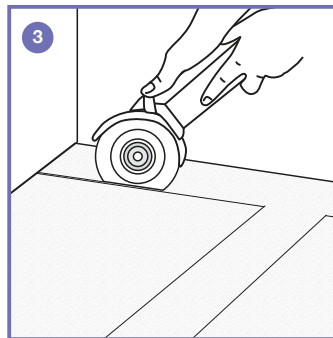
You can achieve this by laying either 20mm board or a combination of 20mm and 4mm Plano Board around the Sloping Board.

Alternatively, the Sloping Board can be recessed into the solid floor, but care must be taken to avoid any obstructions such as underfloor heating pipes etc.

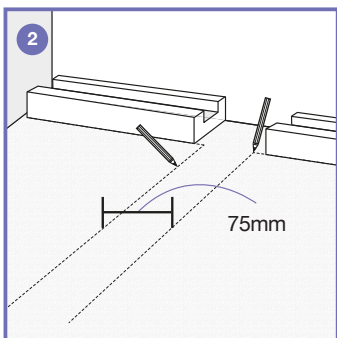
Installing the J-Drain



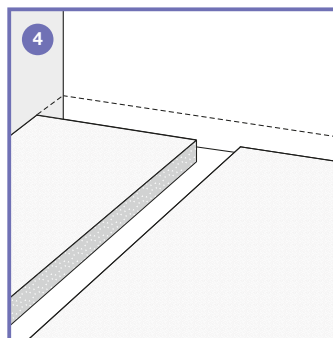
1. Screw the threaded drainage pipe connector to the protruding inner spigot.



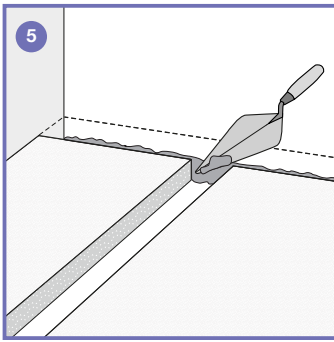
3. Remove the installation supports and following the lines drawn cut a channel for the drain to a depth of 60mm.



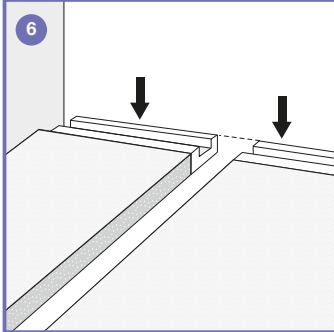
2. Position the Polystyrene installation supports against the wall and draw around them. Also, indicate the drain position.



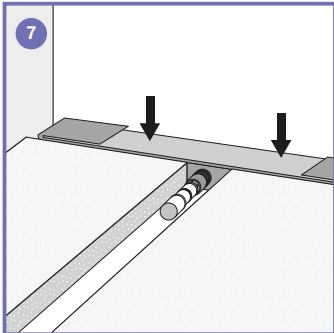
4. Now cut a channel from the drain position indicated deep enough to take a 1.1/2" BSP waste pipe to a suitable exit point. Make sure you allow for a suitable fall in this pipe (3%).



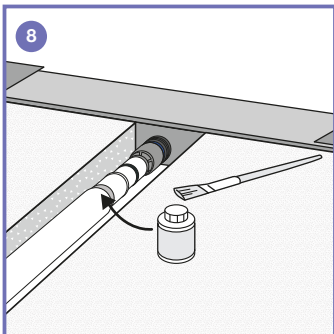
5. Lay a bed of cement-based flexible tile adhesive in the recess cut for the drain body.



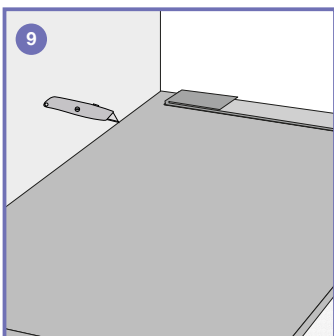
6. Press the Polystyrene installation supports into this recess. Use a spirit level to check the supports are level – and remember that the drain body when installed must be flush with the surrounding solid floor. Allow the adhesive to cure.



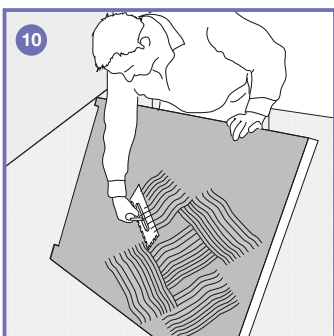
7. Carefully place the drain body into the Polystyrene installation supports.



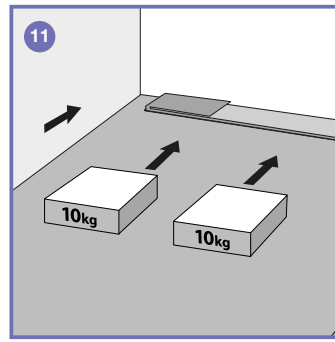
8. Bond the drainage pipe connector to the waste pipe using a suitable solvent weld.



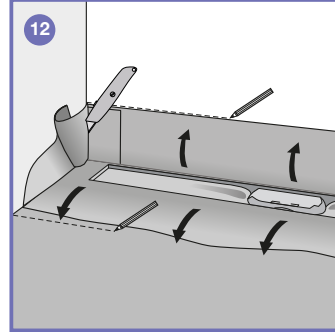
9. Now trim the **Jackoboard** Sloping Board to the correct size and shape and as snug to the membrane as possible.



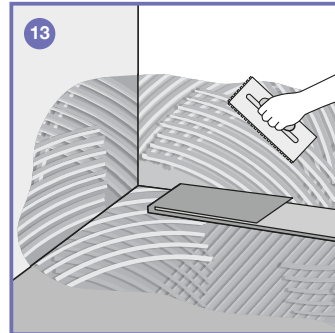
10. Make sure the solid floor is dry, clean and free of any surface contamination. Comb out a continuous layer of cement-based flexible tile adhesive to the underside of the Sloping Board using a 5mm notched spreader.



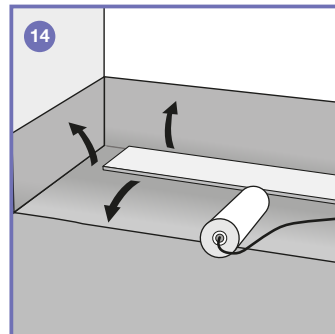
11. Carefully position the Sloping Board up to and around the drain flange and below the waterproof membrane and press firmly down. Place 10-20kg of weight evenly over the Board and allow the adhesive to cure.



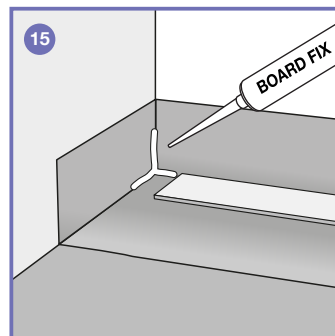
12. Fully unfold the waterproof membrane and draw around it against the walls and Sloping Board. Cut out the corners of the membrane.



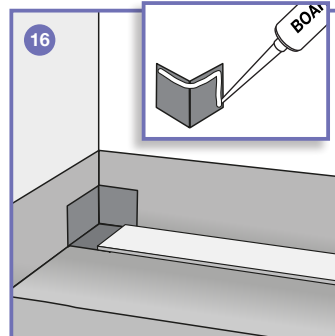
13. Comb out a layer of cement-based flexible tile adhesive to the limits of the waterproof membrane as drawn, filling any voids and maintaining the slope between the Sloping Board and the drain flange.



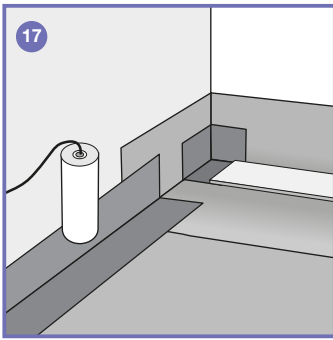
14. Press the waterproof membrane onto this adhesive bed, insert the tile guide, and roll it on for a firm adhesion.



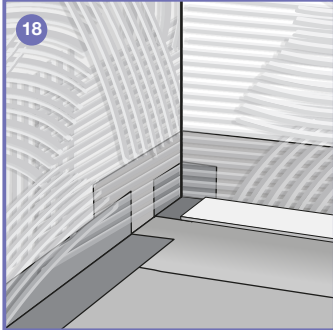
15. Apply **Jackoboard** Board Fix Adhesive and Sealing Agent to the corners of the Waterproof Membrane.



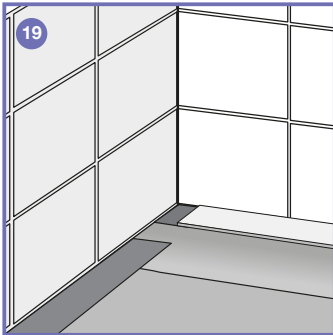
16. Apply Board Fix Adhesive to the backs of the PVC Corner Seals and bond them into position.



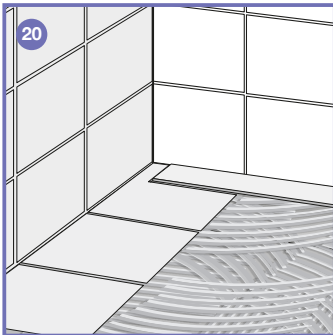
17. Now seal the joint between the Sloping Board and the previously applied **Jackoboard** Plano Wall Boards with an appropriate sealing system. This could be the Jackoboard Waterproofing and Sealing Set for example.



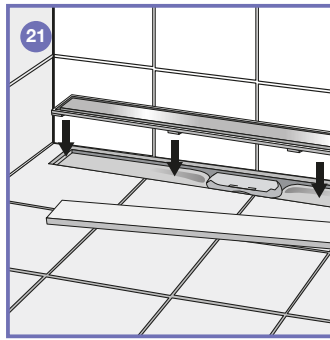
18. Protect the Sloping Board with a sheet of plywood (for example) and comb out a layer of cement-based flexible tile adhesive onto the wall boards with a 5mm notched spreader



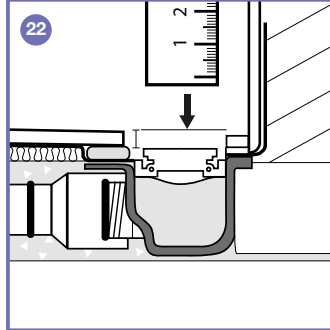
19. Tile the walls down to the Sloping Board and to the drain. Grout the tiles when the adhesive is cured



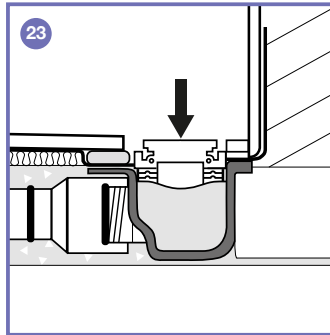
20. Comb out a layer of cement-based flexible tile adhesive onto the Sloping Board and fix the floor tiles up to, around and against the Polystyrene Tile Guide. Grout when the adhesive has cured.



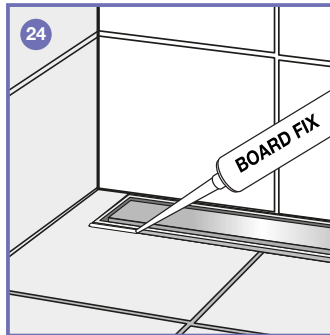
21. Once the grout has cured remove the Tile Guide and drop the frame and grate into position.



22. Measure the difference in height between the tile grate and the finished tile surface and then calculate the required quantity of riser blocks.



23. Remove the grate and install the riser blocks to bring the grate level with the tiles. Position the grate within the frame.



24. Apply a bead of mould resistant silicone sealant to the gap between the grate frame and tiles.

PLEASE NOTE

- Jackoboard Sloping Boards are in principle suitable for all kinds of ceramic and stone tiles. However, for mosaic tiles less than 25mm square we strongly advise the application of an epoxy resin grout for the floor tile joints.
- Tiles must be fixed using cement-based single part flexible tile adhesive. Ready mixed 'tub' adhesives must not be used.
- The J-Drain grate may be reversed and tiled to match (or indeed contrast with) the rest of the floor tiling. Again, cement-based single part flexible tile adhesive must be used.
- The grout line around the grate frame should be sealed with a mould resistant flexible sanitary sealant (silicone) and not a cement-based grout.
- The tapering stainless steel Aqua Line Profile is available for the Sloping Board to cover the edge where the Sloping Board meets the surrounding construction board floor.
- If showers are to be wheelchair accessible tiles should be a minimum 50mm square.