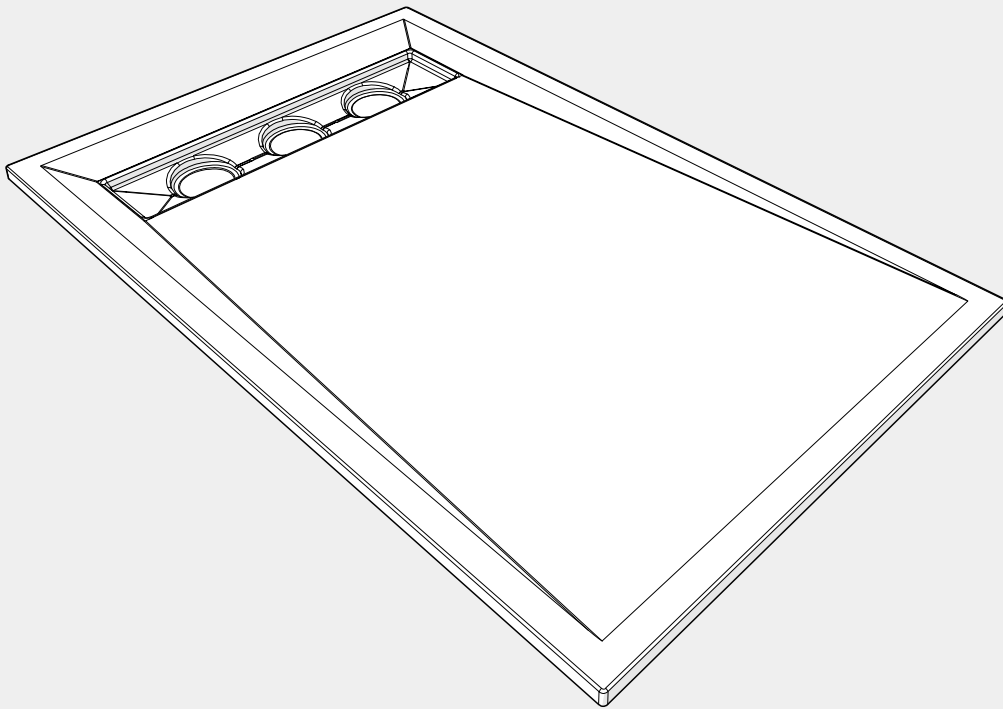




TriForm Wet Room Former

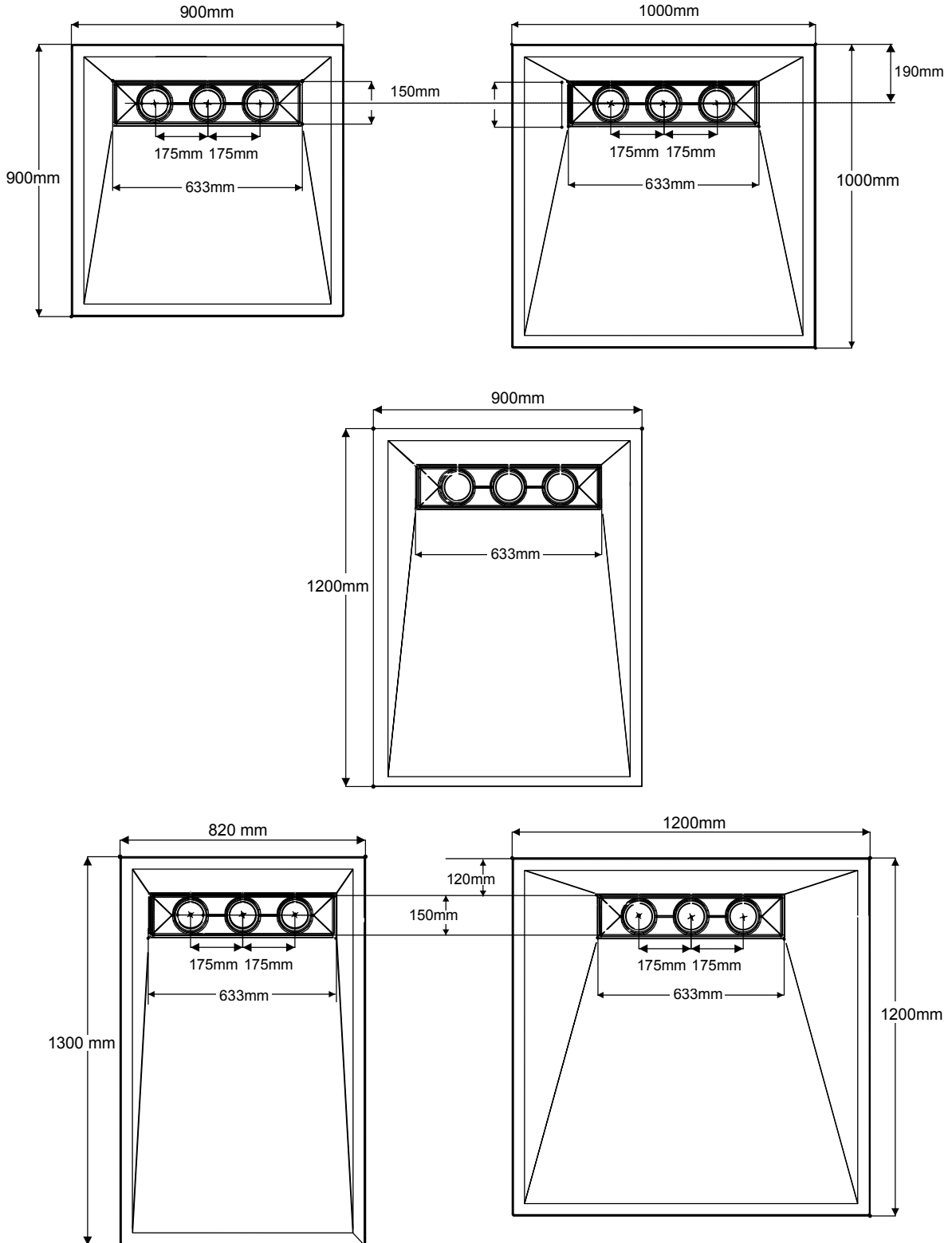
INSTALLATION INSTRUCTIONS



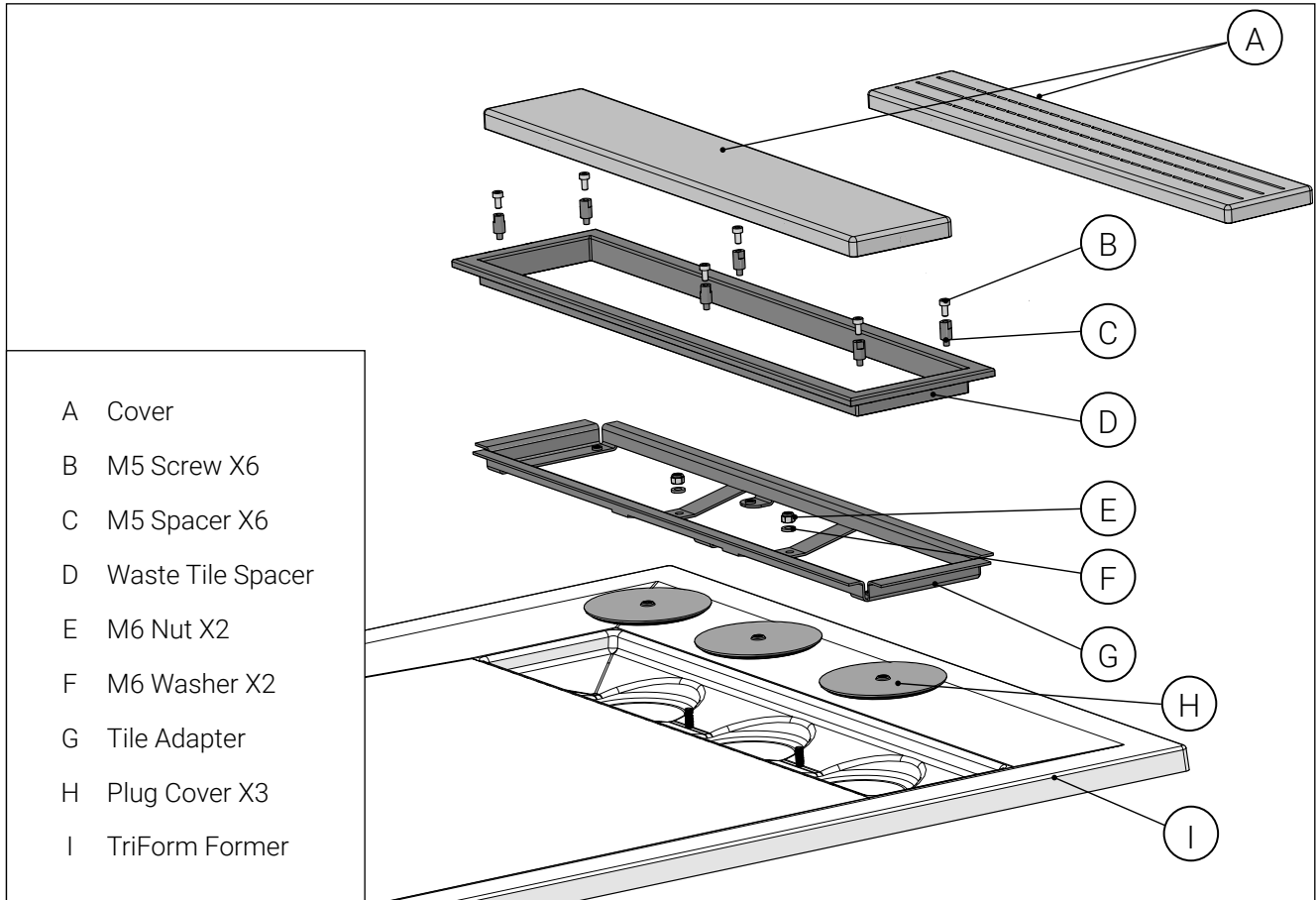
Please read all instructions before installation and leave this document with the end user for future reference as it contains important warranty information

Dimensions

Available sizes



TriForm Former & Gully Part List

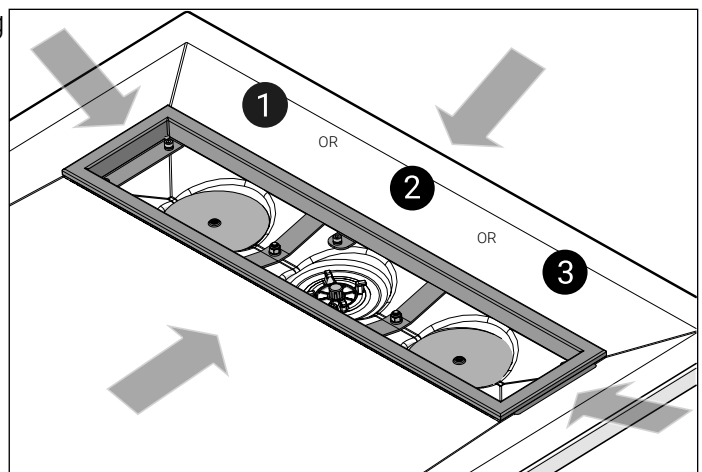


TriForm has 4 fall planes effectively directing the water into the waste giving a high flow rate and complete level access.

Up to 3 standard AKW wastes can be fitted, delivering maximum flow capacity and a choice of positions to avoid joists.

TriForm has an integral trough waste providing excellent water integrity without silicone. The waste accommodates tiles up to 2.5cm / 1" thick.

If not all waste holes are needed, plugs are supplied to fill in the recess to prevent water collecting. Plug guides – the plugs have drill guides in the centre to help installers drill the waste hole centrally.



Wooden Floor Installation

Wooden Floor Installation

Position the TriForm upside down over the desired location for the shower and mark around the edge.

Cut out the flooring area within the marked area taking care not to cut through supporting joists/noggings or any electrical wiring which may be below.

Place noggings 75mm x 50mm to all the edges of the cut-out area to provide support for both the TriForm former and the existing floor edge. Noggings must also be fitted within 100mm each side of the waste trough. The 50mm wide supporting joists/noggings must be on 350-400mm centres maximum. Joists/noggings top surfaces do not require profiling for this flat-bottomed former.

IMPORTANT

Before completing the installation, water test the flow from tray into waste for correct installation and drainage efficiency.

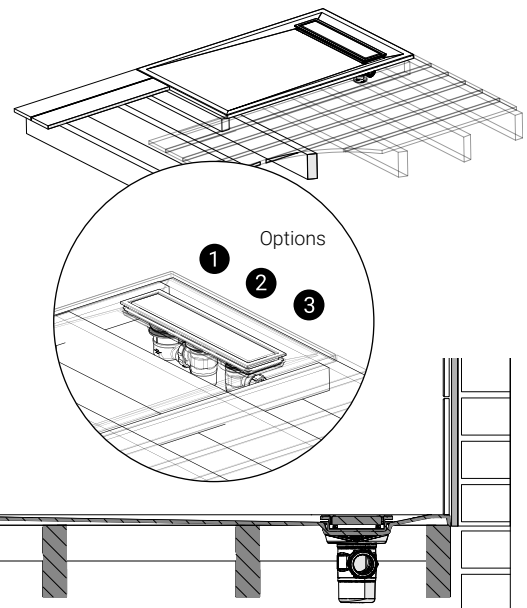
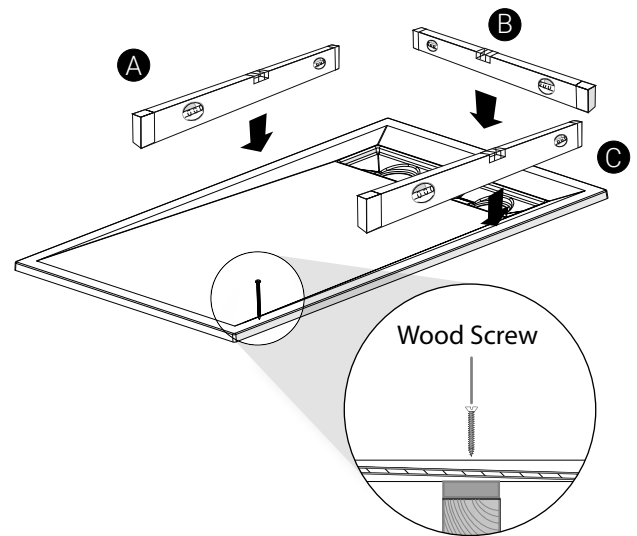
It is important to ensure that the TriForm is level in all directions before securing the Former into place. If water puddles away from the waste, this is a clear indication that the levels are not correct - the water is acting as a 'spirit level'.

The sides on the tray **A** and **B** may well show level on testing, but if point **C** is low, then water will puddle in the area of point **C** and the only remedy is to level the floor and refit the Former. The tray has 'lands' on all four sides.

Use a spirit level front to back and side to side - all flat edges must be level (**ABC**) - the fall is moulded into the tray.

Set levels - ensure the top of the TriForm is flush with the surrounding floor surface.

If the surrounding floor is lower than the TriForm, use ply to bring the surrounding floor levels up to the TriForm. If the surrounding floor is higher than the TriForm, use ply on all exposed joists/noggings to bring the Former level to the surrounding floor levels. Floor surface to TriForm mounting surface is 22mm.



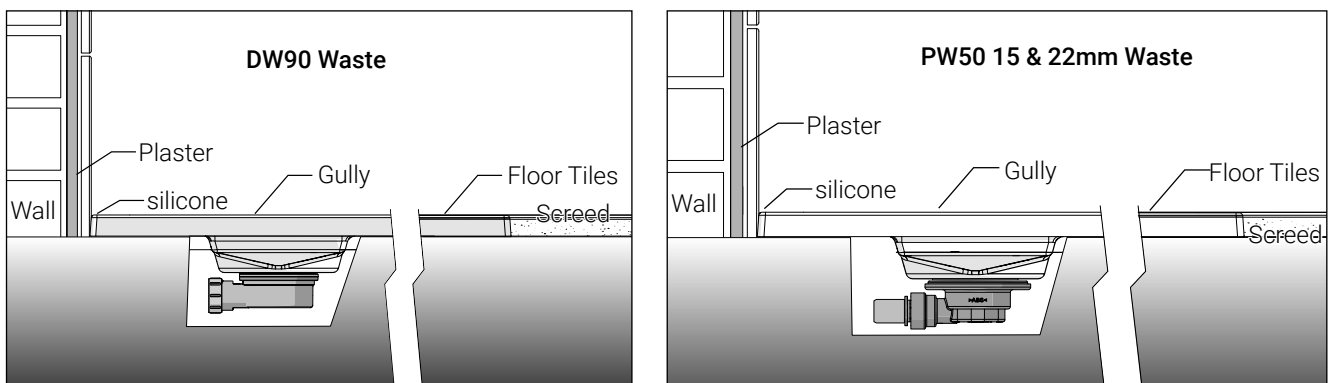
Fix down – when the Former is fully supported and level with the surrounding floor, apply an adhesive or mastic to all supporting surfaces in conjunction with wood-screws on the former edge to fix the tray down onto the joists and noggins. **Foam should not be used** as a load bearing support as it will break down under repeated product use. The screw-holes must be drilled out (5mm dia) before fitting screws. Use a minimum of 1 or 2 screws per side.

Do not overtighten screws – On the top face of the former. Ensure all screw heads are flush with top face of the Former.

Additional screws can be added in any part of the former to remove any flexing should it occur.

The TriForm Former is supplied with the top surface lightly abraded. This will allow the floor covering tanking system to achieve the best bond to the former.

The Gully waste assembly can now be added, see page 6.



Screeded Floor Installation

Position the TriForm upside down over the desired location for the shower and mark around the edge. Dig out screed to suit former area.

The TriForm must be fully supported on all four edges and evenly over at least 50% of the underside. The screed should support the TriForm within 100mm of each side of the waste. Sand and cement may be used to create a subscreed at least 22mm (3/4") lower than the finished floor height. Allow this mix to set. Flexible sand & cement mix may then be applied liberally to the subscreed to hold the former firmly in position at installation. Foam should not be used as a load bearing support as it will break down under repeated product use. If necessary screw the former down around the edge in at least 4 positions, (at least one on each side or near a corner - do not overtighten screws).

When installing the TriForm into concrete floors there must be enough room for the waste and the concrete needs to be removed to allow waste pipe to reach an outside gully. The edges of the TriForm must finish flush and level with the top of the finished screed top surface.

Installation

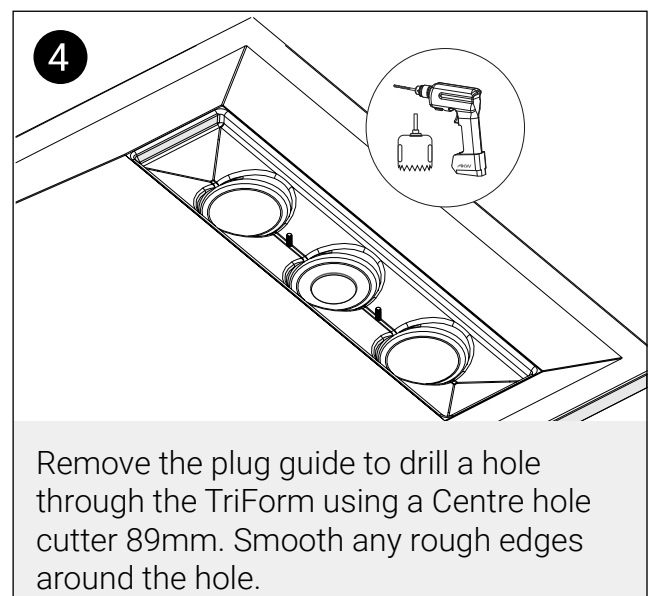
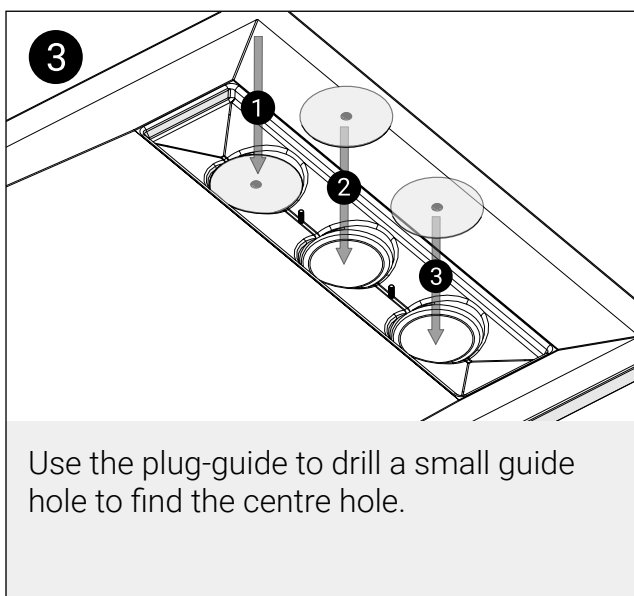
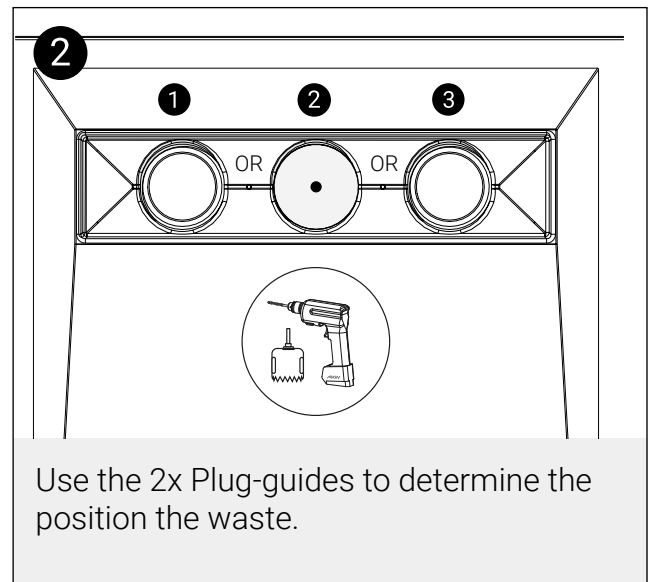
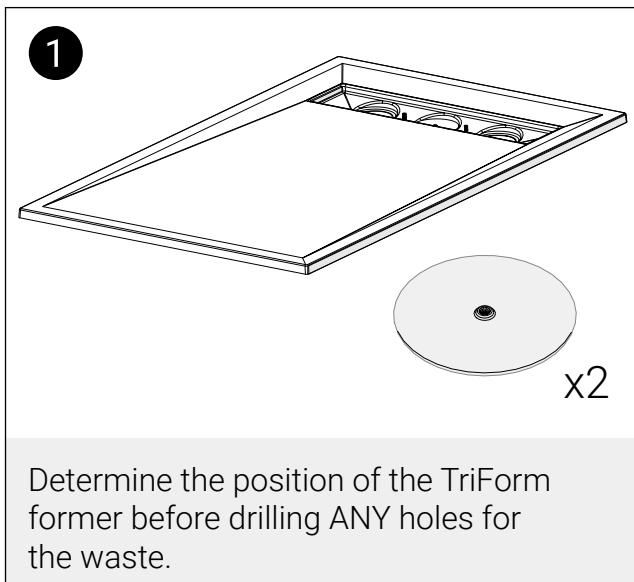
If installing the TriForm to a ground floor it is possible to use the DW90, GW90, GW50, GW19 or PW50 and PW90 shower waste. GW50 can still be installed in a screeded floor but to fit this large waste, concrete needs to be removed to allow waste pipe to reach an outside gully. The edges of the TriForm must finish flush and level with the top of the finished screed top surface.

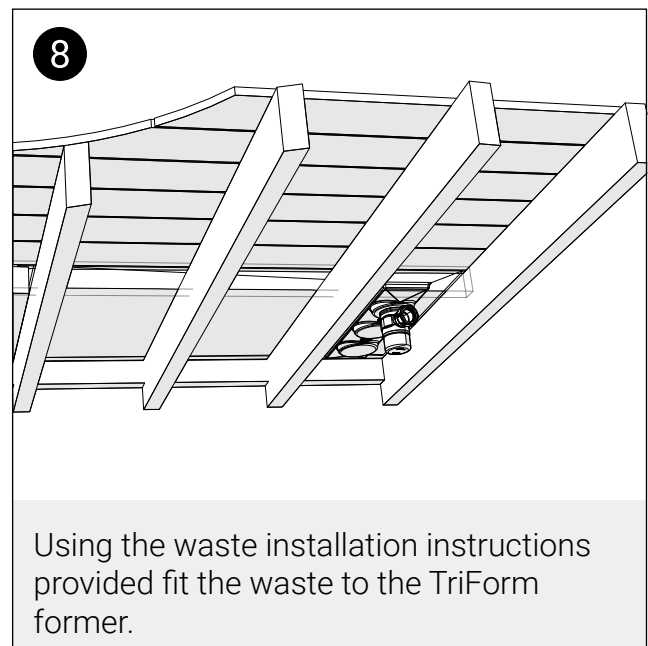
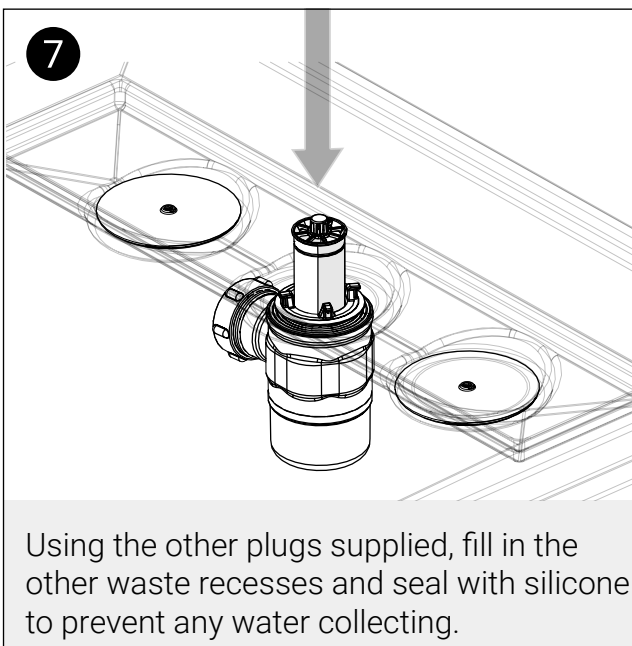
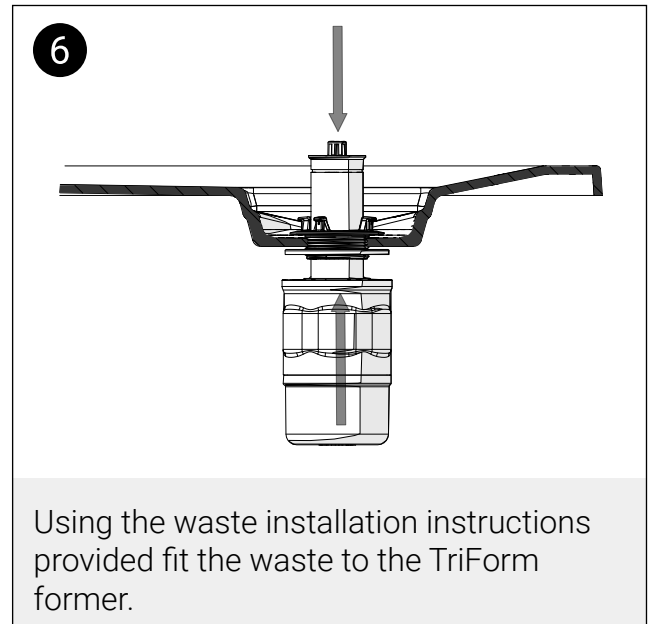
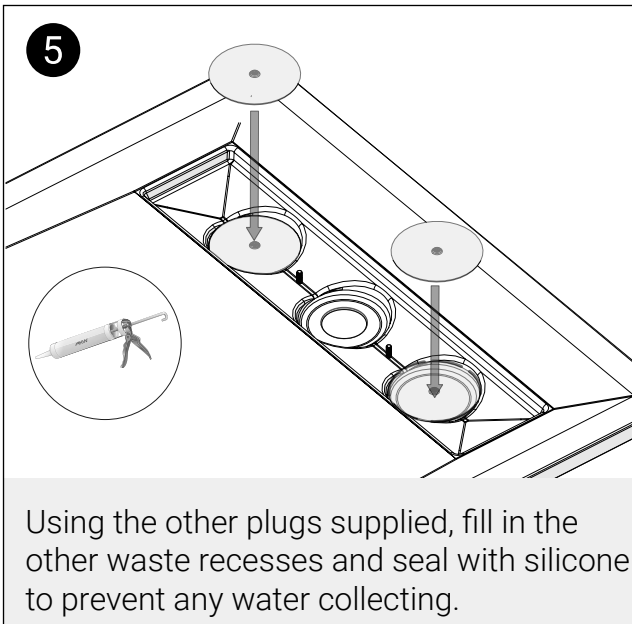
The TriForm Former is supplied with the top surface lightly abraded.

This will allow the floor covering glue or tanking system to achieve the best bond to the former.

The Gully waste assembly can now be added.

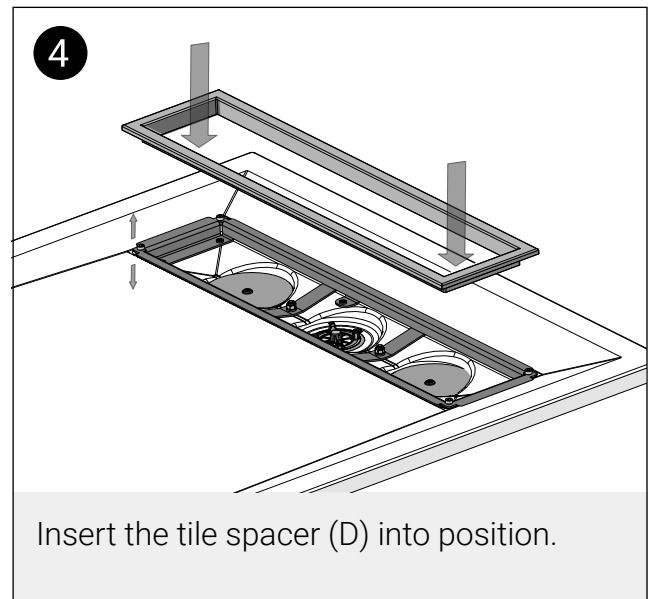
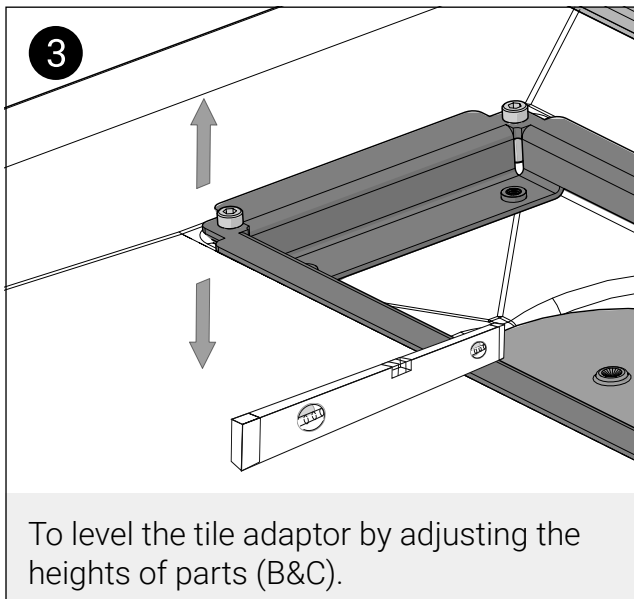
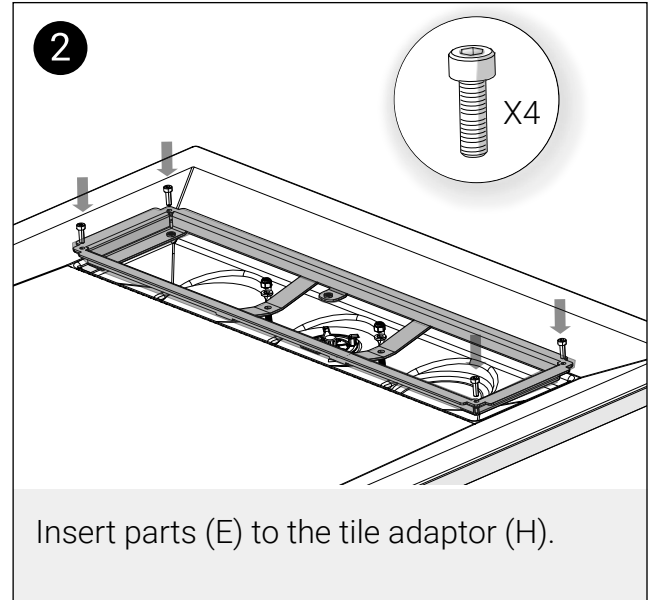
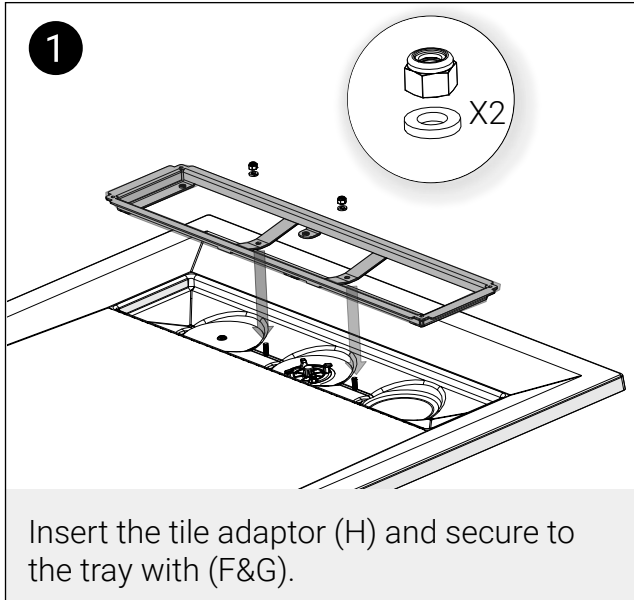
Step 1 - Install waste into the TriForm gully





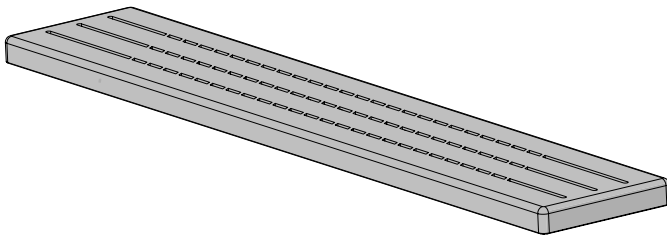
Installation

Step 2 - Install the gully into the TriForm

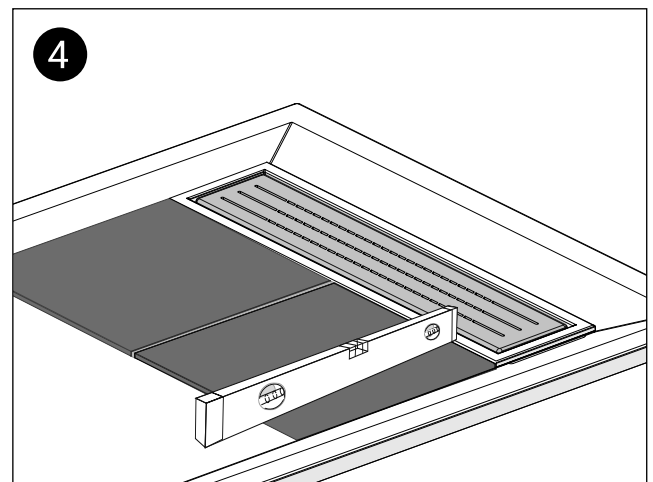
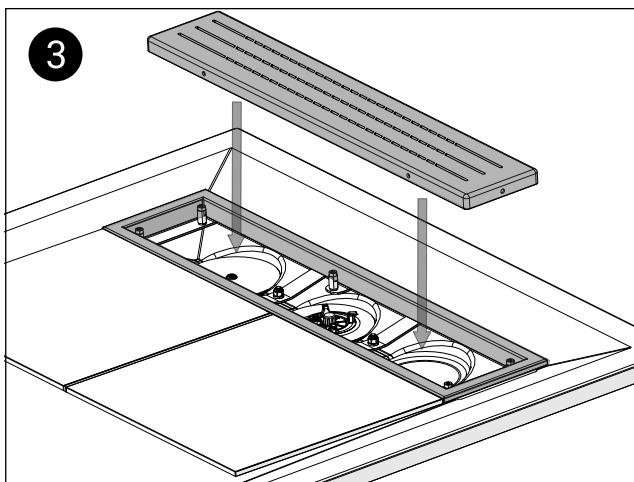
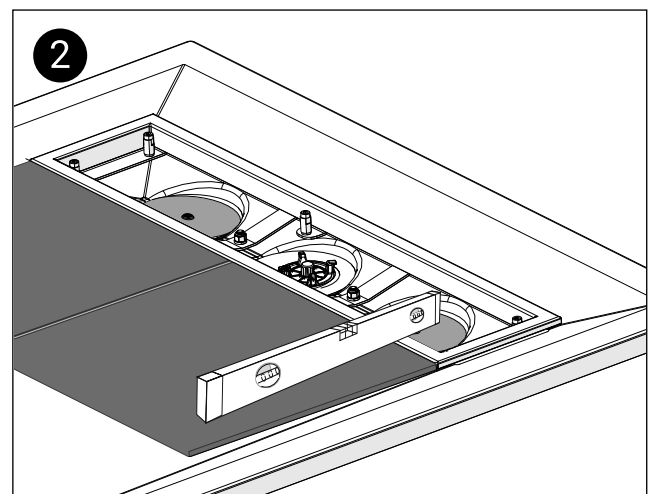
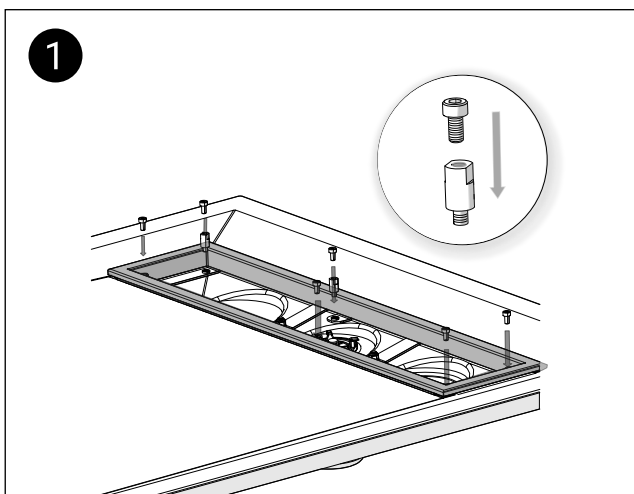
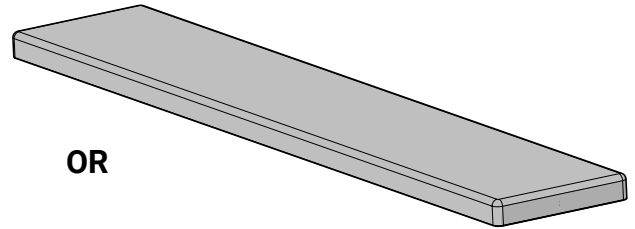


Note: Prior to fitting the floor tiling the area must be water proofed.
 Use a Tanking Kit to seal any joints.
 The water proofing system must extend at least 100mm up the wall above the tray.
 Tiles should only be used with this installation.

Step 3 - Install waste cover



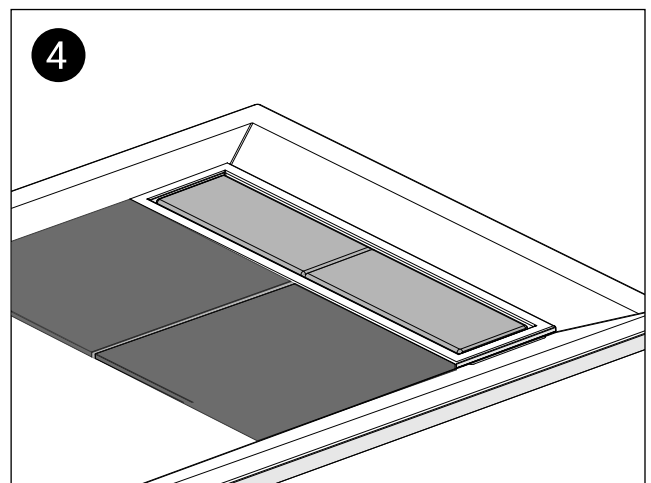
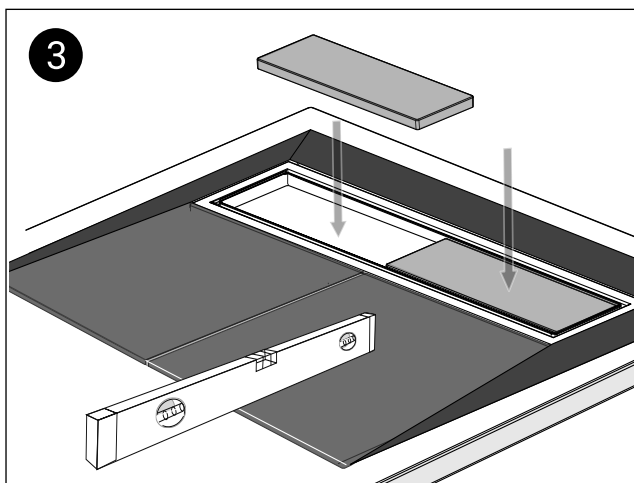
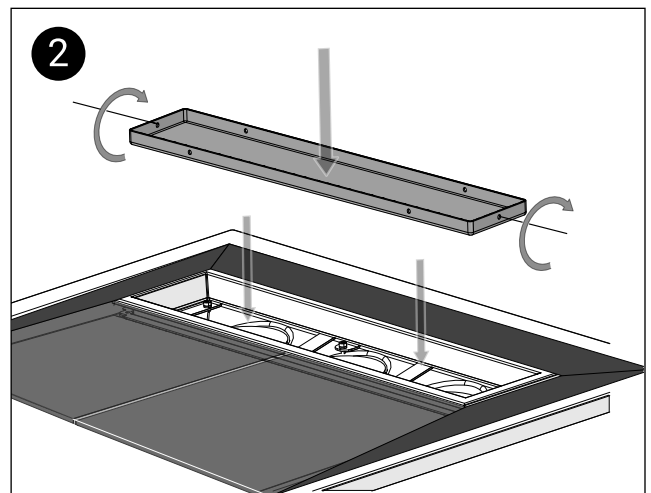
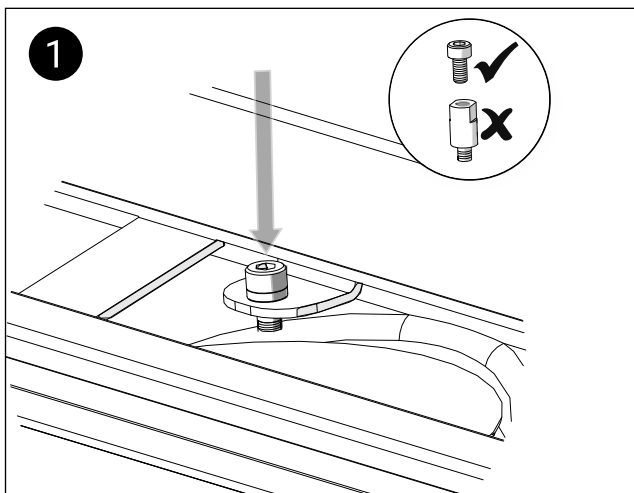
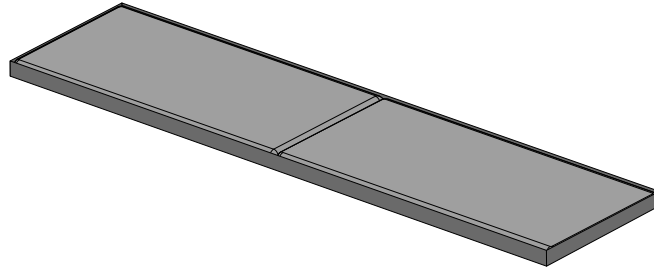
OR



Note: Tiles should only be used to cover the former. Measure all angles and distances for tiles around the gully and ensure there is a slope of between 2% and 4% to the trough outlet.

For shower units that are suitable for wheelchairs the size of tiles have to be 2"x 2" (50 x 50mm).

NOTE * Tiles must be checked to provide a slope between 2% and 4%.

Step 4 - Tiling waste cover (optional)

Note: Tiles should only be used to cover the former. Measure all angles and distances for tiles around the gully and ensure there is a slope of between 2% and 4% to the trough outlet.

For shower units that are suitable for wheelchairs the size of tiles have to be 2" x 2" (50 x 50mm).

NOTE * Tiles must be checked to provide a slope between 2% and 4%.

Final checks and tests

- Ensure the shower gully is tested for water-tightness by filling with water to the level in the trough. The waste hole plugs should be sealed to the gully drain and should be placed both sides the subpan.
- Test water-tightness and check for any leaks at this stage before covering the former with any floor covering.
- Check Floor covering is sealed and at least 100mm up the wall above the tray.
- Check for sharp edges on all tiles surfaces.
- Check Floor covering has not been damaged.
- Check Drain cover is securely positioned.

After Care

Provided that the shower tray has been correctly installed, difficulties should not be encountered. If any maintenance is required, it must be carried out by a competent installer.

It is advised that the waste is cleaned regularly as part of a routine maintenance regime.

To remove the central Stainless Steel grid insert the grid removal tool into one of the corners. Then gently lever the gully waste cover up and out vertically.
Lift the grid cover out and put to one side.
Lift the trap up vertically by gripping the centre peg.

Contact Us

AKW[®]
Life Made Better

Orders & Quotes

01905 823 299
orders@akw-ltd.co.uk

General Enquiries

01905 823 298
sales@akw-ltd.co.uk

Technical Enquiries

01905 560 219
tech@akw-ltd.co.uk

Kitchen Enquiries

01905 823 262
kitchens@akw-ltd.co.uk

Fax

01905 823 297

AKW

Pointon Way, Hampton Lovett
Droitwich Spa, WR9 0LR

www.akw-ltd.co.uk
orders.akw-ltd.co.uk

Follow us on Social:



Warranty

Warranty applies only to manufacturing or material defects, conditional on the one-time correct installation of the product. It does not apply to:

- Inappropriate use or accidental damage.
- Damage or defects that result from incorrect installation.
- Lack of maintenance including the build up of grime or damage resulting from inappropriate cleaning.
- Damage or defects that result from repairs or modifications undertaken by unauthorised persons.
- General wear and tear through usage and does not apply to surface finishes.

Warranty period starts from the date of installation. See the T&Cs on our website for further information.

Select 1 of 2 ways to activate your warranty



1. Scan using your Smart Device



2. Visit Online

akw-ltd.co.uk/warranty-information

What to do if something goes wrong?

In the event that you encounter a problem with this product, follow the trouble shooting guide if applicable, then contact your local installer. If the issue is still unresolved, contact AKW Technical Enquiries who will provide further advice and arrange for a maintenance engineer to visit if necessary. None of the foregoing affects your statutory rights.