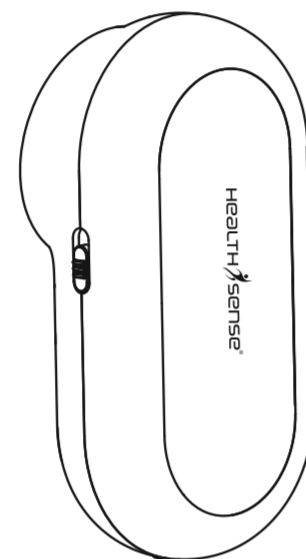


USER MANUAL

New-Feel

Rechargeable Lint Remover

LR-350



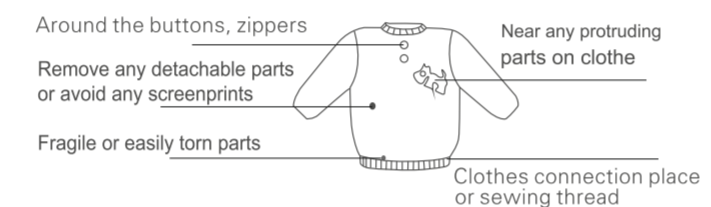
Sensing Health Everywhere

SAFETY PRECAUTIONS

1. Make sure the clothing is well unfolded and evenly smooth before usage to prevent any damage.
2. Avoid pressing the lint remover hard on the clothing and only glide it gently on the surface for best results
3. It is prohibited to use the lint remover on the clothes you are wearing. This may damage the cloth, device & may also harm the body.
4. Do not use the appliance if it has obvious damage or if blade components or outside mesh has been damaged. Switch OFF the device immediately. Do not attempt to disassemble without authorization.
5. Ensure to keep power OFF while cleaning & maintaining the device

TIPS BEFORE USAGE

Please pay special attention while operating the appliance near the following parts :

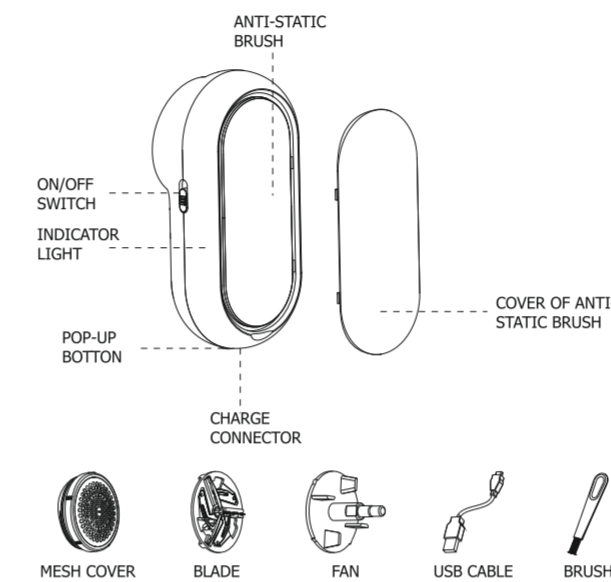


(If delicate fabric, then suggested to keep maximum height to proper distance between blade & fabric, also keep minimum speed.)

Note :

- Test the appliance on a hidden part of clothing before use
- Never use the device on a creased garment or areas where a fibre is pointing out

PRODUCT OVERVIEW

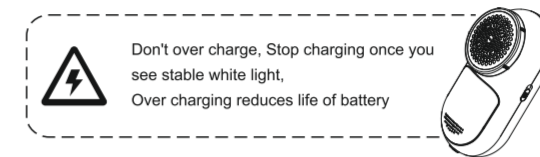


CHARGING METHOD

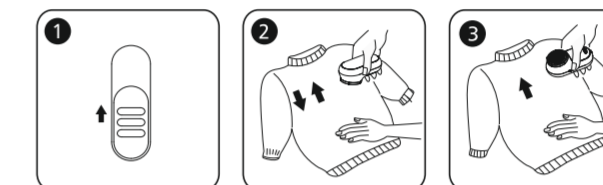
1. Before charging, please make sure the output of the power adapter is 5 v, 1-2A.
2. During charging, the appliance will not work.
3. Pull the Power switch down to switch OFF the appliance
4. Insert the DC interface of the cable into the charging point and plug the USB to a power source
5. The normal charging time of the appliance is about 6 hours, with a usage time of about 50 min.
6. After 6 hours of charging, remove the USB plug.

Note : Charging Indicator

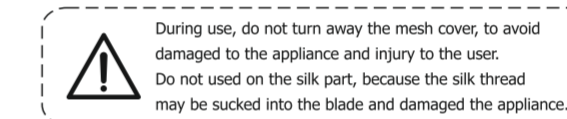
- A. White light blinks while low charge
- B. Stable white light once fully charged



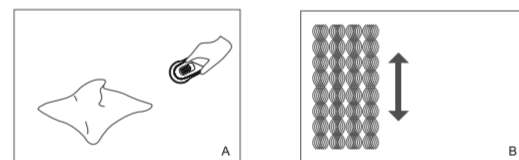
HOW TO USE



1. Turn on the switch
2. Put the appliance on the flat cloth surface, then sliding back and forth

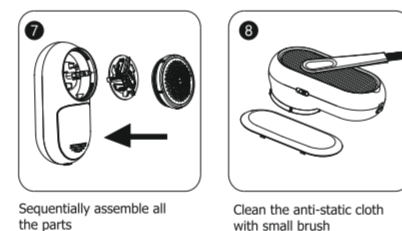
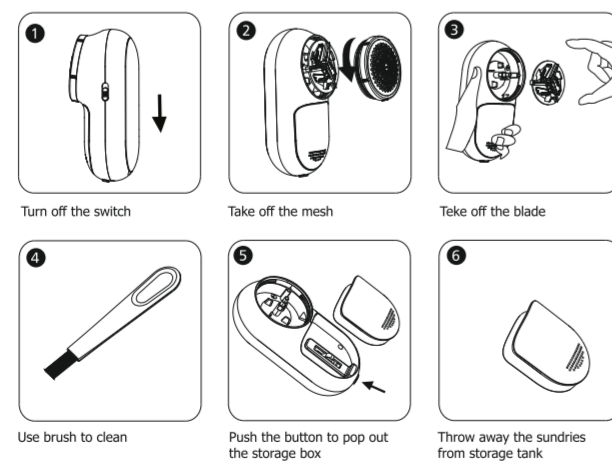


SPECIAL INSTRUCTIONS



- A. Thin Fabrics: Fold in two layers and spread it on a flat surface or iron board before usage.
- B. Woven or knit fabric: Move the appliance in the direction of the weave or pattern.

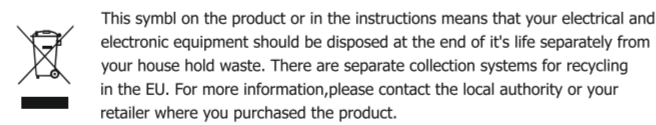
CLEANING



PRODUCT SPECIFICATIONS

- Power : 2W, input 5V, output 2.4V
- Battery Specification : Rechargeable 600mA NI-MH battery
- USB Cord : 0.4 mtr
- Charging Time : 6 hrs
- Usage Time : 50 min

Environmental protection : the battery may pollute the environment, you must remove the battery before discarding the appliance, or send the appliance to a designated recycling collection point.



USAGE INDICATIONS

This appliance is useful in removing fluff, fuzz, bobbles, pills and burr from all types of garments & clothing. Use it to revive your Cotton & linen clothing, woollen garments, knit fabrics, plush toys, socks, fabric on furniture, cushions, carpets, bedding sets, curtains etc.

WARRANTY & SUPPORT

Entitle yourself for the 1 year HealthSense warranty by registering your purchase and easily reach us to submit your product related issues & queries, when you follow these hassle free ways.

At HealthSense our top priority has always been our valued customers. We very well know your HealthSense product is a part and parcel of your everyday life, which is why we are more easily accessible than earlier.

SCAN - For Warranty Registration



(Must register within 30 days from date of purchase)

SCAN - To File Complaint



(Fill & submit form if you are facing any product related issues)

* For detailed warranty terms please visit the link : www.healthsense.in/warranty-terms

* For additional support :
Mail us at : support@healthsense.in or
Call us on : 080-41262836

www.healthsense.in



Healthsense is a proud Indian brand creating quality products idealized and conceptualized for India and manufactured by exclusive overseas partners.