

English

Product Introduction

1. Specification

Product name: Wearable Breast Pump Model: YD-1193
Rated Voltage: DC 5V Rated Power: 5W
Charging time: about 2 hours Working time: about 120 minutes

Product Features

BPA-FREE Compatible Material

Pump and accessories are made by food-grade material.

Anti-back flow protection design

Closed system to prevent breast milk from backing up to the pump, prevent infection, and keep the milk fresh.

Smart Touch Screen Technology

Digital display features a memory function, timer and backlight for easy tracking and recording pump sessions.

Portable and Easy to Clean

Compact design, only 5 parts, easy to carry.

Meet Different Needs

9 levels Stimulation Mode & 9 levels Expression Mode & 9 levels Mixed Mode.

Quiet and Lightweight

The quiet breast pump allows for discreet pumping anywhere. Light weight, portable pump designed for moms on the go who pump several times a day.

Large Capacity Battery

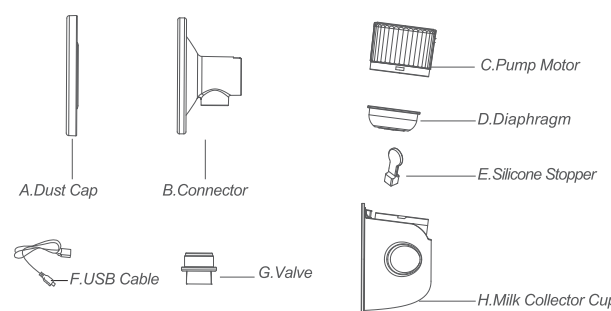
Using large capacity rechargeable lithium battery, fully charged can be used for 2 hours, no need to connect to AC power. Moms can enjoy pumping anywhere at anytime.

Wearable & Pump Everywhere

No tube, No wire. It is so convenient that you can wear inside your nursing bra, you can use it on the go and let your hands-free when you have to pump.

-1-

Accessory List



	Desc.	Material	Temp.	1PK Qty	2PK Qty
A	Dust Cap	PP	-20°C~120°C	1	2
B	Connector	liquid silicone	-20°C~200°C	1	2
C	Pump Motor	/	/	1	2
D	Diaphragm	liquid silicone	-20°C~200°C	1	2
E	Silicone Stopper	silicone	-20°C~200°C	2	4
F	Charging Cable	/	/	1	2
G	Valve	liquid silicone	-20°C~200°C	2	4
H	Milk Collector Cup	PP	-20°C~120°C	1	2
I	Manual	/	/	1	1

Power in: 110-240V 50-60Hz Power Out: 5V 1A
Size: 120*80*148mm Motor Weight: 302g
Milk Cup Capacity: 150ml
Battery Capacity and Type: 3.7V 1100mAh Li-ion

-2-

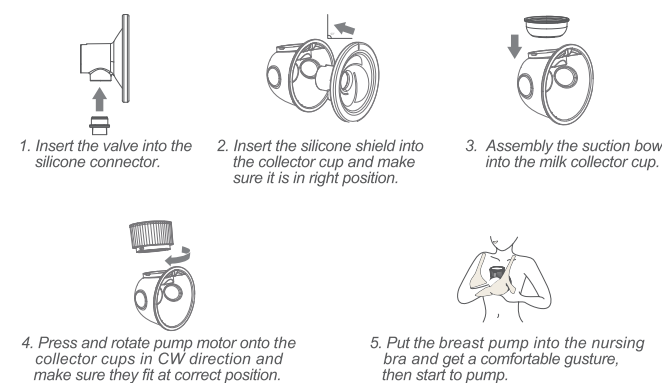
Cleaning Overview

Washing and sanitizing are two different activities. They must be done separately to protect you, your baby and the performance of your breast pump.

- Wash – To clean the surfaces of the parts by physically removing contamination.
- Sanitize – To kill living organisms, such as bacteria or viruses, that may be present on the surfaces of the parts.

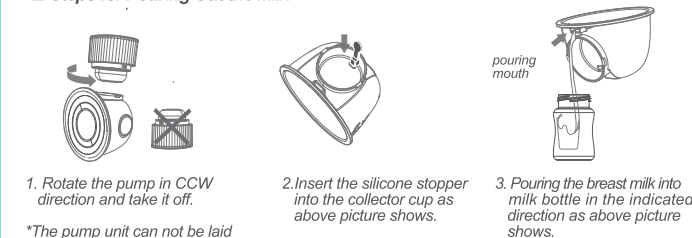
When to Wash	Breast Shield	Breast Pump Kit	Milk Collector Cup
Before 1st use	☺ wash ☺ sanitize	☺ wash ☺ sanitize	☺ wash ☺ sanitize
After each use	☺ wash	☺ wash	☺ wash
Once per day	☺ sanitize	☺ sanitize	☺ sanitize

* Dry all the parts after wash or sanitize, Wash your hands and assemble the complete breast pump according to below pictures.



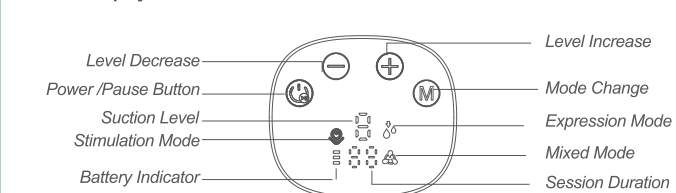
-3-

Steps for Pouring Out the Milk



*The pump unit can not be laid flat to avoid breast milk backflow.

Icon Display



Operation Instruction

- Power Button/Pause Button: Press 2 seconds to turn on or to turn off the breast pump. Tap the power button to pause the pumping when need.
- Mode Change: Tap the mode change button to change mode.
- Initial set-up: The initial stimulation mode will automatically change to expression mode after 2 minutes of use. Digital display features a memory function and timer for easy tracking and recording pumping sessions. When switched on, the pump's memory will automatically use the suction settings from the previous pumping session.
- Suction Level: + suction increase - suction decrease (Stimulation Mode: L1-L9 Expression Mode: L1-L9 Mixed Mode: L1-L9)
- Battery Percent: Indicates remaining battery life. Please charge breast pump when low in battery.
- Session Duration: Indicates the length of your pumping session. The pump will automatically switch off after 30 minutes use.

-4-

Operation Instruction



1. Hold the breast shield and connector onto your breast with your thumb and index finger. Support your breast with palm of your hand.
2. Turn on the breast pump by tapping the power button and choose the mode you prefer.
3. Collecting the milk after expression. Or you can keep in in the refrigerator.

Tips

- Your breast pump will begin in Stimulation Mode. Adjust the pumping level by using the controls to find a comfortable level.
- Stimulation Mode: a fast pumping rhythm that mimics the baby's natural sucking pattern to stimulate milk flow. After 2 minutes, your pump will automatically switch to expression mode. If your milk begins to flow before 2 minutes, press the mode change button to manually switch to expression mode.
- Expression Mode: a slower pumping rhythm for gentle and efficient milk collection after milk has started flowing. Once you are pumping in the Expression Mode, increase the speed/vacuum until pumping feels slightly uncomfortable(not painful), then decrease slightly.
- Mixed Mode: a mixed pumping rhythm of stimulation mode and expression mode, which can stimulate the breast to produce more milk. Adjust the pumping level using the controls to find the maximum level of comfortable vacuum for you.

Long Storage

Your breast pump contains a rechargeable battery. To preserve your breast pump, when not in use for an extended amount of time, it will automatically transition into storage mode. To remove from storage mode, plug your breast pump into an external power source and fully charge the battery for up to 2 hours.

-5-

Before storing your breast pump for an extended amount of time remember to:



Trouble Shooting

Unable to start

1. Make sure the power button be tapped for at least one second.
2. Make sure the pump machine be fully charged.

Suction is insufficient

1. Make sure all the parts are correctly screwed and assembled.
2. Please check whether the valve is installed in place or not, ensure the silicone breast shield fits the breast closely and no air leakage.
3. Adjust the "+" button of the control panel to increase the suction.

Breast milk can't be pumped out.

1. Ensure all parts are installed in place and the suction is good, then release your body and try it again.
2. Please use the hot towel to apply hot compress on your breast and do some massage, extruding breast by your hands and check if the milk flow fluently, so as to ensure the mammary gland is opening.

Feeling pain when pumping the milk

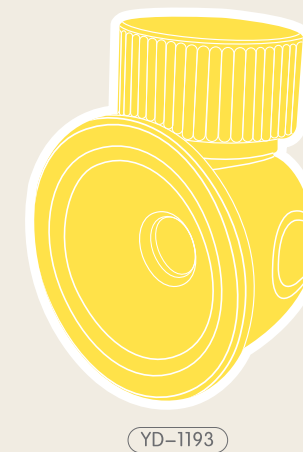
1. Please adjust the "-" button on the control panel to reduce the pumping level to be comfortable.
2. Please use the hot towel to apply hot compress on breast and do massage with a little bit downward gesture, then do the pumping again.

Thanks for your using our products. Sincerely hope our products and services will bring you and your family convenience and happiness.

-6-

WEARABLE BREAST PUMP

MODEL: YD-1193



User Manual

Thank you for buying our product. Please read this manual carefully before using and keep it for easily checking in the future. Wish you have a pleasant using experience with our smart electric breast pump.

封底

封面