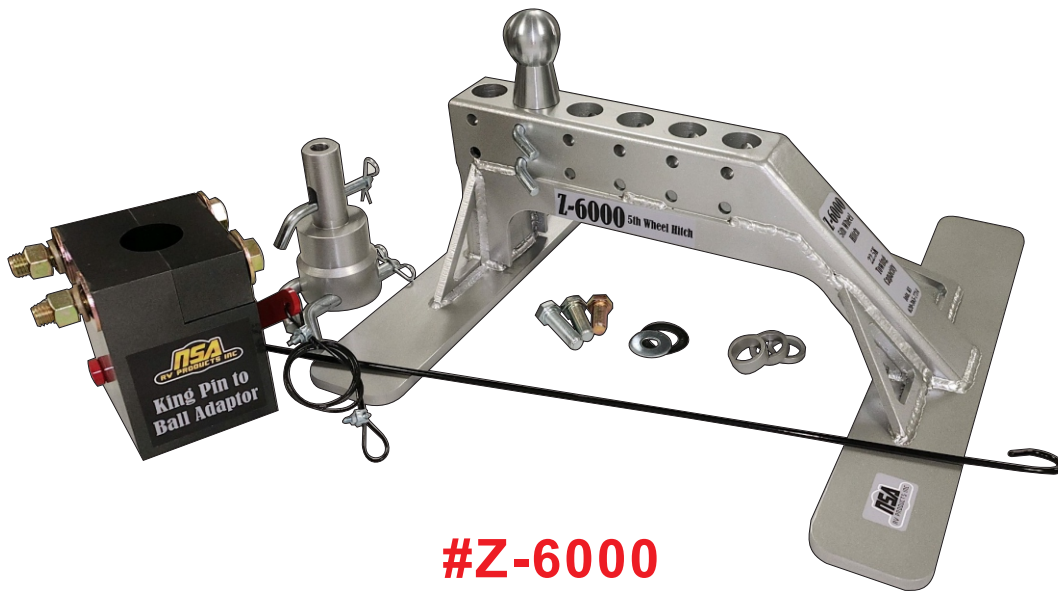




# The Z-6000 Fifth Wheel Hitch



**#Z-6000**

**22,500 lb towing capacity  
6,000 lb tongue weight**

**Limited Lifetime Guarantee**





To all dealers/installers, Make sure all customers receive these instructions for installation and safety tips.

\*After receiving The Z-6000 fifth wheel hitch, compare it with your parts list on Page 3. If there are any pieces missing or damaged contact NSA RV Products.

Contact NSA RV Products for replacement parts and warranty work at [www.nsarvproducts.com](http://www.nsarvproducts.com) and [sales@nsarvproducts.com](mailto:sales@nsarvproducts.com) or (620)-365-7714.

## Important safety information

Read this manual to completion before towing any fifth wheel camper/trailer with this product to fully understand the product and all safety precautions.

Before each trip check all bolts, nuts and pins on the product for the safety of the passengers and those in the surrounding area.

Make sure there is enough clearance for the trailer to not come into contact with the cab or windows of the tow vehicle.

### Warning

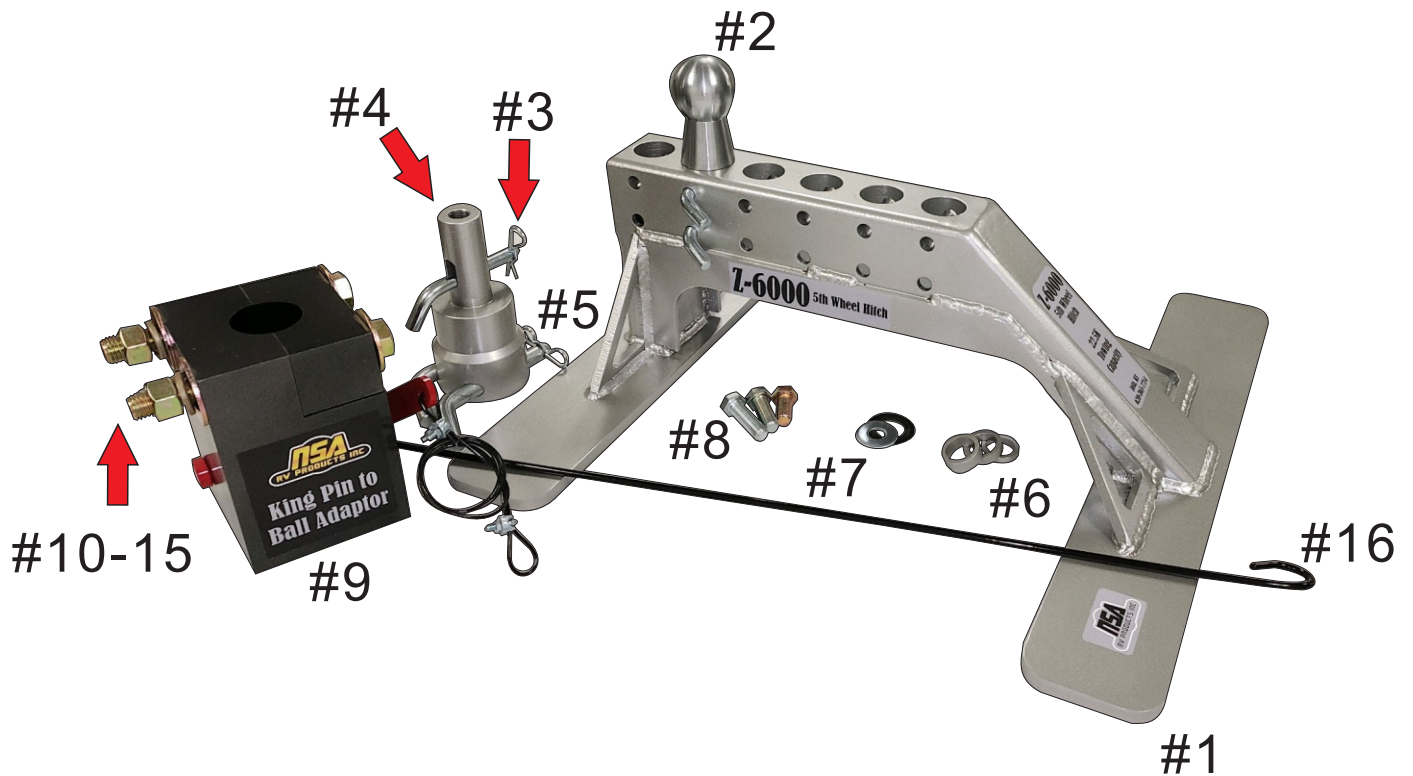
**Failure to follow safety warnings could result in severe injury or death.**

Read and understand the manufacturer's instructions for your trailer, tow vehicle and towing equipment. Follow all safety warnings, setup instructions and recommended maintenance before installing your hitch.

Before towing, check all safety chains and test that all electrical hookups are working, make sure the king pin adaptor is properly affixed to the king pin and that the king pin adaptor is properly attached to the Z-6000 ball.

**Customer Service**  
for any questions or concerns, contact us at

[www.nsarvproducts.com](http://www.nsarvproducts.com)  
Phone: (620)-365-7714  
[sales@nsarvproducts.com](mailto:sales@nsarvproducts.com)



## Parts List

- #1 Fifth wheel hitch
- #2 2-5/16" Steel chromed ball
- #3 3 1/2" bent pins
- #4 2 5/16" ball coupler
- #5 2 5/8" bent pins
- #6 3 steel spacers
- #7 1 rubber 1 steel washer
- #8 3/4" Grade 8 bolts 1 1.5" 1 2" 1 2.5"
- #9 King pin adaptor
- #10 3/4" locking washers x2
- #11 3/4" grade 8 Nuts x2
- #12 3/4" flat washers x4
- #13 3/4" Bolts x2
- #14 3/4" Bolt 4 1/2" long
- #15 3/4" Bolt 5" long
- #16 Release Cable pull rod

## Tools Required

- 1- 1-1/8" Drive Torque Wrench
- 1- 1-1/8" Socket
- 1- 3/4" wrench

# The Z-6000 5th Wheel Hitch installation

Before installing the Z-6000 hitch there needs to be a turn-over ball installed into your truck bed. **(Ref. 1)**

Flip the 2 5/16" ball facing up and make sure it is securely fastened to the bed.

Next you need to determine where you want the Z-6000 to mount to the ball. The ball coupler that attaches to the turn over ball can be secured into 4 different location from the bottom of the hitch. **#1 #2 #3 #4**

This hitch is very versatile and can be mounted forward or backwards depending on whether you have a short bed or long bed truck. Always keep In mind when towing how your truck will tow with the ball forward or backwards of your axle.

How to mount the ball coupler to the turn over ball.

Step #1 Insert both 5/8" bent pins to hold the coupler onto the turn over ball. **#5 #6**

Step #3 Next place your hitch onto the top of the ball coupler now insert the 1/2" bent pin into the bottom hole of the hitch to secure the coupler. **#7**

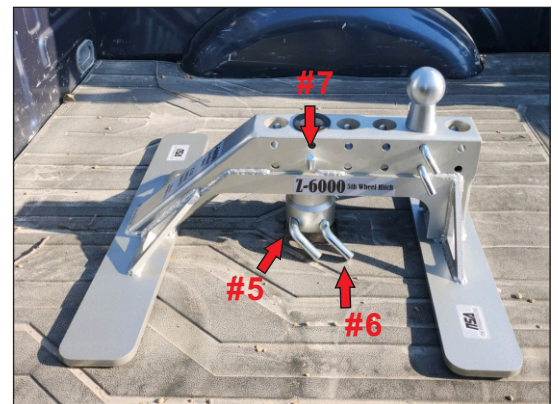
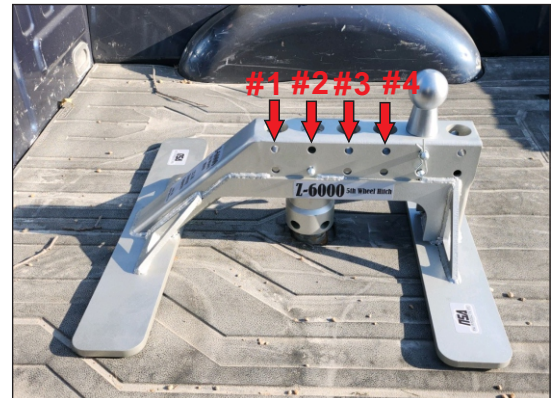
## Adjusting your hitch for different spacer and bolt requirements.

Next we need to determine if you need to use the 3/8" 1/2" or 3/4" steel spacer.

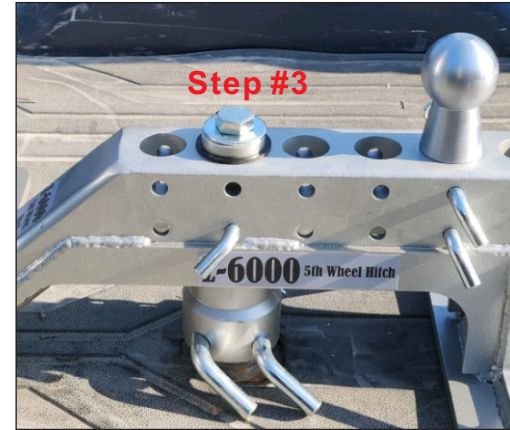
**Ref. #2** shows a ball coupler down inside the hitch sitting on a turn over ball. Now with the 2 5/8" bent pins already inserted into the turn over ball you might be able to pull up on the ball coupler and that is ok.

Pull up if the coupler if it does not breach the top of the hitch then only use the 3/8" steel spacer. If it does breach the top or sticks up quite a bit you might need to use the 1/2" or 3/4" spacer. This process is trying to figure out when you tighten the 3/4" bolt down that everything fastens securely to the turn over ball.

**Ref. 1**



**Ref. #2**



**Step #1** Place the rubber washer on the top to keep from rubbing off paint.

**Step #2** Place one of the three steel washers on top.

**Step #3** Next place the 3/4" steel washer on top

**Step #4** Now you need to determine which 3/4" bolt you need. To determine this keep in mind when towing you always want to pull on as many threads as possible. So thread in the 2.5" long bolt if it bottoms out before everything is secure then you either need to add a thicker spacer or go a shorter bolt.

Your end game here is when you are done you have used the longest bolt possible and everything is good and tight.

Once you have figured out which bolt to use now tighten the bolt down to **85 ft. lbs of torque**. Use a torque wrench in this process.

**Always remember this process is very important to get right. The first time! If you do not understand go to our web site watch video's or call in to NSA RV Products and ask a tech.**

### **Now to determine where to mount your ball.**

There are 6 positions for the ball to mount into the hitch. The hitch also has the ability to be flipped 180° Making it the most versatile fifth wheel hitch on the market.

Having all these positions to set up for towing allows the truck to tow level and be as efficient as possible. Therefore while towing the camper you will be able to turn a full 90° without hitting the cab of the truck.

**To stop the ball from sticking in the kingpin adaptor, grease the ball slightly.**

#### **Standard & Long Bed Trucks**

For standard and long bed trucks, the hitch will typically need to be installed with the ball closer to the cab of the truck. However, if more clearance is needed, install the base with the ball closer to the tailgate.

#### **Short Bed Trucks**

For short bed trucks, install the ball closest to the tailgate.

Test the tow configuration before going on a trip. These are not rules, but guidelines to assist in towing.

# The King Pin Adaptor Installation

Ref. 3



Ref. 3

Remove both 3/4" bolts and all hardware from the king pin adaptor.

Mount the adaptor directly on the king pin. **(Ref. 3)**

The king pin adaptor should be installed with the red lever on the drivers side of the truck. **(Ref.4)**

Once the King pin adaptor is on, place the 3/4" bolts into the King pin adaptor with flat washers under the bolt heads.

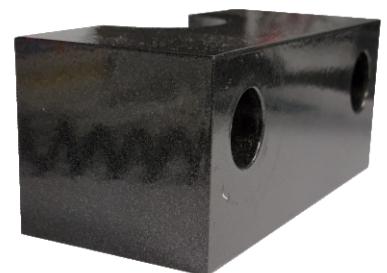
Next place the small black aluminum king pin clamp **(Ref.5)** onto the king pin adaptor bolts, place the flat washers and lock washers on the outside of the king pin aluminum clamp, tighten down the nuts onto the king pin adaptor with a torque wrench to 85 lbs. of pressure.

This is important to keep the king pin adaptor from moving around.



Ref. 4

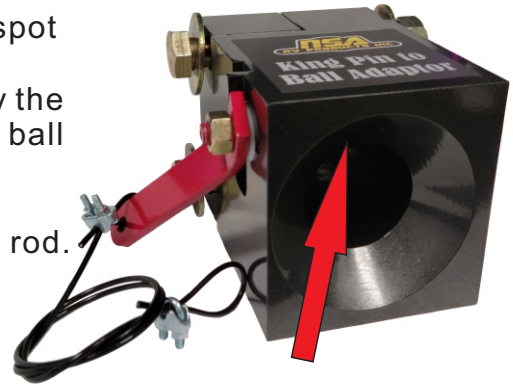
Ref. 5



Once the adaptor is fully installed it is important to know how it works.

The adaptor has a red internal cross pin that has a flat spot machined on it. When the King Pin Adaptor is lowered onto the ball, this pin rotates allowing the pin to pass by the edge of the ball. When the adaptor is fully sitting on the ball the pin rotates back locking onto the ball.

Once this is done the ball cannot come out of the adaptor unless it is released with the release cable pull rod.



To remove the king pin adaptor from the fifth wheel ball, pull the release cable with the black pull rod. **(Ref. 6)** Pull the cable back and raise the camper. After the ball is past the king pin adaptor lock, it is safe to let go of the release cable.





## Accessories

### Kingpin adapter



#TW1009

For extra trailer/campers, additional king pin adaptors may be purchased.

### Safety chains



#TW2002

For Towing safely, Safety chains are a must! Our 3 ft. 23,000 lb. rated Safety chains(pair) are the ideal length for your towing setup.

### 5th Wheel Hitch Ball



#TW1013

For the times when you need a spare. This 2-5/16" ball is designed from the ground up with our superior quality 5th wheel hitch's in mind

### Release cable pull rod



#TW2001

In case you need a spare release cable pull rod.