



User Manual



Driving Scrubber



SM860

SANITMAX.COM



Precautions

- This manual provides the necessary instructions for operating and maintaining the machine.
- Before operating or using the machine, read and understand this manual thoroughly and operate the machine carefully.
- Follow the maintenance instructions provided in the operator's manual for regular maintenance of the machine.
- Use original manufactured or equivalent parts for maintenance.
- Do not use flammable liquids; do not operate the machine near or in areas where flammable liquids, gases, or combustible dust are present.
- This machine is not equipped with an explosion-proof motor. If the machine is used in a location with flammable gases, liquids or combustible dust, the electric motor will generate sparks during startup and operation, which may cause a flash fire or explosion.
- Do not pick up flammable materials or reactive metals.
- Hydrogen gas is released from the battery. Keep away from sparks or open sources of ignition. Keep the battery compartment open while charging.
- **WARNING:** Electric shock hazard. Disconnect the battery wiring before servicing the machine.
- **WARNING:** Rotating brushes operate. Keep hands away. Turn off the power before servicing the machine.

 	<p>Protecting the environment</p> <p>Please dispose of packaging materials, used machine components such as batteries, and toxic liquids such as antifreeze and oil, in accordance with your local waste disposal laws and regulations, and maintains environmental safety.</p> <p>Please be sure to do your part in recycling.</p>
---	---

Warning!

- ◆ Before using the scrubber, please read and familiarize yourself with the manual.
- ◆ This scrubber is only used as a hard floor cleaning equipment, if it is used for other purposes than those described in this manual, we will not be responsible for any loss or liability caused by it.
- ◆ The scrubber should be operated in such a way as to avoid getting involved in long-fiber materials such as ropes and wires, corrosive chemicals, and high-temperature sundries, etc., otherwise the brushes may be damaged or other safety accidents may be triggered.
- ◆ The scrubber is designed to work on hard surfaces with various kinds of dirt and other dirty areas.
- ◆ Any kind of modification may affect its performance, life span, and even the safety of use and may violate the law. Damage caused by modification does not fall within the scope of the "three guarantees".
- ◆ When the scrubber is turned on, do not put any part of your body into the rotating parts to avoid the machine rotating and causing injury to your body.
- ◆ The machine must be parked on a level ground, avoid parking on the slope, otherwise it will cause other safety accidents.
- ◆ The power supply of the scrubber must be disconnected when opening the cover, installing the accessories, or maintenance or overhauling.
- ◆ The battery should be in a well ventilated place when charging, and should be charged in time when the power is insufficient.
- ◆ When you finish the work, you should pull out the key in time and keep it properly to avoid unauthorized personnel operation.
- ◆ When stopping the machine, this machine should lift all the brushes and suction picks, which can prolong the service life of consumable parts and maintain the machine.
- ◆ Do not flush the machine directly with a water gun or high-pressure water gun.
- ◆ Do not use the machine in dusty places.
- ◆ The machine must be stored and operated at a temperature of 32 °F to 104 °F (0 °C to +40 °C).

Content

Precautions	1
1. Technical Instructions	4
2. Machine construction (self-propelled)	5
3. Control system	6
4. Machine commissioning and pre-operational checks	7
5. Machine operation	8
6. During machine operation	8
7. After machine operation is complete	9
8. Cleaning system	10
9. Suction system	12
10. Waterway System	14
11. Inspection and Maintenance	15
12. Troubleshooting	17
13. Explanation of machine fault codes	19
14. Battery Maintenance Guide	20

1. Technical Instructions

Outside Diameter of Brush Tray	17 inch x 2
Width of Suction Scraper	41.7 inch
Solution Tank	34.3 gal
Recycling Tank	37 gal
Work Efficiency	80000 saft
Pressure of Brush Tray	90 LBS
Maximum Forward Speed	5km / h
Maximum Inclination of Full Load	≤30°
Radius of Turning Circle	51 inch
Voltage System	24 V
Driving Motor	1000 W
Brush Motor	380 W x 2
Vacuum Cleaner Motor	550 W
Charging Time	6 h
Charging Model	24 V 24 A
Working Time	≥4h
Battery Capacity	150 Ah
Size of Production	59x34x47.5 inch
Size of Packing	61x34.6x49.2 inch
Net Weight of Production	725 LBS
Gross Weight of Production	925 LBS

2. Machine construction (self-propelled)



3. Control system



1. Power Key Switch. Twisting the key to the right will turn the power on to the vehicle, twisting to the left will turn the power off.

2. Brush panel switch: When the switch is pulled forward, the brush panel motor drives the brush panel to start. When the switch is pulled forward, the brush disk motor drives the brush disk to start, and when the switch is pulled backward, the motor turns off.

3. Power display:

Display the current battery power, as long as the machine is in the boot state this light must be on, the power meter is from right to left for power display, that is, the most right for the highest voltage.

4. Suction switch: When the switch is pulled forward, the suction motor starts, and when the switch is pulled backward, the motor shuts down.

5. Overload protector:

Divided into disk brush overload protector and suction overload protector, mainly to protect the corresponding motor safety; When the corresponding motor is overcurrent or short-circuit, the corresponding overload protector will pop up.

Warning!

Elevate the brush disk after finishing the work to prevent deformation and wear of the brushes.

The suction pickup parts should be lifted after completing the work to prevent deformation of the suction rubber strip.

Do not park the scrubber on a slope.

Do not store more than 50% of the water capacity in the Clean water or sewage tank when climbing a slope of more than 5%.

4. Machine commissioning and pre-operational checks.

4.1 Pre-operation checks

1. Check that the exterior is clean. CAUTION: Do not use the machine in a flammable or explosive environment.
2. . Check whether the battery wiring contact is good, to prevent short-circuit failure.
3. Turn on the machine with the key, and check whether the power is sufficient, if the power is too low, please do not continue to use the machine, should immediately turn off the power, and charge the battery, before use must ensure that the battery is fully charged.
4. Check whether the disk brush or needle seat is correctly installed.
5. Check whether the suction pick assembly is correctly installed (the rubber strip has been installed).
6. Ensure that the sewage tank is free of dirt.

4.2 Machine commissioning

4.2.1 Disc brush installation

1. Make sure that the machine is stationary and that the brush motor is switched off.
2. Step down the brush lifting lever (see machine construction diagram) and lift the brush assembly off the ground. Take out the randomly assigned brush and align the brush snap with the flange buckle under the brush motor, and rotate the brush to the left by hand, and install the brush until both hands leave the brush and it does not fall.
4. Step down the brush lifting lever and put the brush assembly on the ground.
5. If you need to use a pin tray, first place the pad on the pin tray and then install the brush in the same way as for the disk brush.

Recommended!

When working with this scrubber, it is optimal to clean at a speed of 55-65 meters per minute.

4.2.2 Installation of the water pickup assembly

1. Raise the water picket mounting plate assembly off the ground.
2. Unscrew the two center handles on the water pickup assembly and place the water pickup assembly in the slots on the water pickup mounting plate.
3. Insert the suction hose into the corresponding port of the water pickup assembly. (See the corresponding schematic diagram of the whole machine structure)
4. Lock the water picket assembly on the fixed plate, then lift the water picket puller plate, put the locked water picket assembly on the ground, pull the suction button forward, turn on the suction motor, check whether the rubber strip is reasonable, and make appropriate adjustments.

4.2.3 Filling the Clean water tank¹.

1. The front is equipped with a bucket-type water filler, and the tank cover of the Clean water filler has to be removed when filling water.
2. There is a hose filling hole at the rear, and the filling hole at the rear is located above the water volume scale orifice. (See the corresponding schematic diagram of the whole machine)

Tip!

When using a bucket to fill water, make sure the bucket is clean. To add cleaning agent, contact your local dealer.

5. Machine operation

Once the inspection is completed, you can start to carry out the work.

1. Check the amount of water in the water measuring tube. If the amount of water is insufficient, add an appropriate amount of water before operation.
2. Cover the water tank cover, make sure the water tank cover is correctly covered, and form a preliminary seal.
3. Cap the sewer hose and place it in the sewer hose clamp.
4. Step on the foot pedal as instructed and lower the pan brush to the ground.
5. Lower the water skimmer puller plate and lower the skimmer assembly to the ground.
6. Turn on the water valve switch and adjust to the appropriate water volume. (See the structure of the machine corresponding to the schematic diagram of the water volume scale tube)
7. Press the disk brush motor switch to start the disk brush motor, pay attention to whether there are abnormalities and strange sounds, if there are abnormalities or strange sounds, you should immediately turn off the power.
8. Press the suction motor switch, start the suction motor, pay attention to whether there are abnormalities and strange sounds, if there are abnormalities or strange sounds, you should immediately turn off the power.
9. Push the machine forward, that is, start using the automatic scrubber for ground cleaning. (**Self-propelled**)

To stop the cleaning work, please turn off the water valve switch, and successively lift up the disk brush and water pickup.

6. During machine operation

1. When working on slopes or slippery floors, please operate at low speed and do not work on slopes exceeding 3 degrees.
2. After the machine is started, keep walking to avoid damaging the ground.
3. If the water scraper unit absorbs water and leaves drag marks on the floor, wipe the scraper with a rag to remove debris. (Please clean the area to be cleaned beforehand for cleaning operation to avoid drag marks.)
4. If there is too much foam in the sewage tank, please use anti-foaming solution to pour into the sewage tank in time to defoam.

(Please contact your local agent for the purchase of anti-foaming solution)

5. In the process of use, we should always observe the power display meter, when the red indicator light is flashing, the battery is about to enter the state of over-discharge, you should stop to continue the operation, please replenish the electricity in a timely manner. **(Self-propelled)**

6. In the process of using, observe the power meter at any time, when the voltage is as low as 20.4V, the last frame of the power meter will keep flashing, and when the voltage is as low as 20V, the driver will stop working.

It is recommended to consider charging the battery when the power meter is in the second frame on the left side.

7. When the Clean water in the tank is used up, turn off the brush motor and the water valve switch, and lift the brush to keep working until all the sewage on the ground has been sucked up, then turn off the suction motor and lift the water grill assembly.

7. After machine operation is complete

7.1 Sump Drainage

1. Drain and clean the sump tank after each cleaning job or before refilling the Clean water tank.
2. Remove drain hose, unplug hose cap, and place in drain bucket or drain.
3. Open the lid of the sump tank and flush the inside of the sump tank with clean water.
4. Clean the float screen inside the tank.
5. Clean the fullness protector located inside the sump tank. **(Self-propelled)**

Warning!

If the sump tank is not drained when the Clean water tank is filled again, foam or water may get inside the float unit and damage the suction motor.

7.2 Drainage of the Clean water tank

The Clean water tank should be drained and cleaned after each cleaning operation.

1. Open the ball valve switch located next to the left rear wheel of the Clean water tank and allow all Clean water to drain from the tank.
2. Unscrew the transparent cover of the filter assembly to drain the water tank. Clean the filter screen in the filter unit.

Tip!

If the sump tank is not drained when the Clean water tank is refilled, foam or water may get inside the float and damage the suction motor.

7.3 Charging the battery

1. Place the charger and the machine in a well-ventilated area.
2. Turn off the machine.
3. Plug the DC output of the charger into the charging port of the machine.
4. Plug the AC power cord of the charger into a well-grounded electrical outlet.
5. The charger will automatically start charging, and if the battery is fully charged, the charger will automatically turn off.
6. At the end of charging, unplug the charger from the AC power source and then unplug the charger output from the machine.

Warning!

The original charger supplied with the vehicle must be used when charging this machine.

8. Cleaning system

The cleaning system consists of a motor, scrubber brushes, and a spray system to complete the cleaning system.

Warning!

When starting the cleaning work, do not stay in the same place to rotate, long time to stay in the same place, will be the ground, scrubbing damage.

8.1 Schematic diagram



1. Brush plate motor: mainly used for brush plate ground cleaning rotary driving action.
2. Brush: Mainly used for all kinds of conventional ground cleaning, decontamination.
3. Brush connectors: Mainly used to support and guide the whole cleaning system up and down, at the same time in the process of rising, with the role of guiding the inclination.
4. Anti-collision Wheel: Protect the cover of the brush disk, and at the same time play a guiding role in the walking process.
5. Waterproof skirt: Mainly used to prevent the scrubber brush from dumping water in the process of floor washing.

8.2 Operation method

The brush plate lifting mechanism of this scrubber is operated in automatic lifting mode.

After pressing the button down and pulling it slightly to the right and releasing the foot, the brush disk part is placed on the ground.

At this time, then open the panel on the brush plate button, start the brush plate began to rotate work, the brush plate rotation start work, the water tank water is also automatically out of the water tank.

To stop the brusher, simply lift up the brusher and turn off the brusher switch.

Problems	Causes	Treatment
The brush disk is swinging from side to side	Loose fixing screw of rotating rod	Tighten the fixing screws.
Heavy lifting of the brush disk	Rotary bar fixing screw is too tight	Loosen the fixing screws appropriately

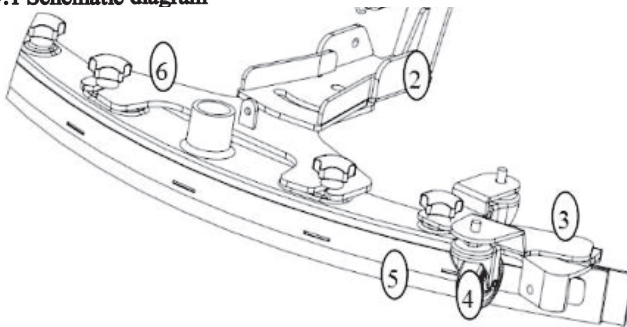
8.3 Inspection and Maintenance

8.4 Maintenance methods

1. When the scrubber is stationary for a long time, the scrubber brush should be lifted up to avoid deformation of the bristles, which will affect the next cleaning effect.
2. When cleaning work is in progress, the metal tangles on the bristles should be removed in time to reduce the load of the brush disk motor, and at the same time to avoid damaging the consistency of the ground, and to improve the overall working efficiency.
3. Avoid cleaning lime, cement, sulfuric acid and other easily solidified, flammable objects.

9. Suction system

9.1 Schematic diagram



1. Pressurized tension spring: Directly connected to the frame chassis and the water pick-up rotating arm, the water pick-up assembly is pressurized.
2. Suction skid connecting bracket: Directly connected to the water skid assembly and the water skid rotating arm, so that the water skid assembly can be swung to the left and right.
3. water pickpocket components: important parts for sewage collection components.
4. water pickpocket universal wheel: used for water pickpocket rubber strip height adjustment, factory has been debugged to the best value. 5. After the water-absorbing rubber strip: is a consumable part, please replace and maintain according to requirements.
6. Water skid fixed plate: an important part of the water skid assembly when walking, lifting and rotating.

9.2 Operation method

The water pickup component lifting mechanism of this scrubber is operated in a manual lifting mode.

After lowering the lifting handle on the lower side of the console, i.e., the water pick-up part is placed on the ground, and then the suction motor starts to suction water by turning on the suction button on the panel.

This scrubber requires the suction motor to be turned off and the water pickup assembly to be lifted after the suction motor has stopped.

9.3 Commissioning of the water trap

As the water pick-up is used for a longer period of time and the rubber strips wear out, the water absorption effect will be affected to a certain extent. In order to achieve the effect of completely removing the stains, the following adjustments should be made.

1. Adjust the height of the two supporting universal wheels at the back of the water skimmer to be the same, and when it is in a static state, it should be suspended from the ground at a distance of about 2mm-3mm.
2. Rotate serial number (4) until the rear rubber strip is tightly pressed against the ground.

9.4 Tape replacement

The adhesive tape is rectangular with sharp edges and should be replaced after all four edges have been fully utilized. 1. First, loosen the presses on the front and rear rubber strips.

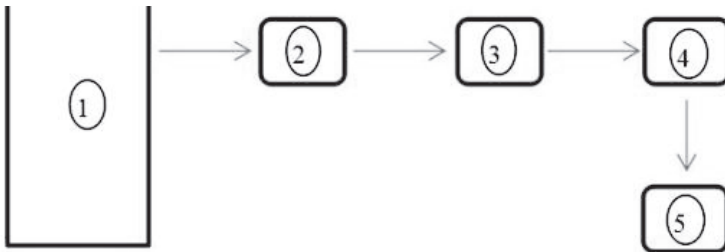
2. Remove the front and rear strips.
3. Remove the new rubber strips needed.
4. Install the new rubber strips in the same order as you just removed them.

Maintenance tips!

After each floor cleaning is completed, the water skimmer assembly needs to be lifted and the rubber strips need to be cleaned.

10. Waterway System

10.1 Schematic diagram



- 1、 Clear water tank: It is one of the core accessories for the whole vehicle to reserve water for cleaning the floor.
- 2、 Ball valve switch: installed on the left side of the front wheel, used to regulate the size of water output.
- 3、 Filter: installed on the right side of the front wheel, filtering impurities in the water system.
- 4、 Solenoid valve: installed in the upper part of the brush disk assembly, used to control the role of the water switch.
- 5、 Water outlet: located in the middle part of the brush plate, supplying water for the brush cleaning process.

10.2 Operation Method

The whole vehicle water system and the cleaning system are designed to work on a synchronized principle. When the brush motor is rotating, the water outlet will be turned on by default; when the brush motor stops working, the water outlet will be turned off automatically. If the water output does not meet the requirements, the water quantity can be adjusted using the ball valve switch.

10.3 Inspection and Maintenance

Problem		Cause	Treatment
1	Water outlet No water coming out	Filter clogged	Clean the filter
2		Solenoid valve does not open	Check circuit and wiring
3		Water outlet clogged	Remove debris from inside outlet
4	Water leakage from outlet	Solenoid valve not closed	Clear foreign matter inside the solenoid valve
5		Damaged connector	Replace connector

6		Leakage at joints	Re-fasten the bandage
7	Low water output	Folded hose	Adjust the folded water pipe
8		Insufficient opening of solenoid valve	Clear the solenoid valve of foreign matter

11. Inspection and Maintenance

11.1 Periodic inspection

Periodic maintenance and inspection		Interval (h)				
		4	20	50	200	500
1	Battery level detection	√				
2	Carbon brush check of motor					√
3	Are the brushes tangled with threads and filaments?	√				
4	Check the water filter		√			
5	Check instrument panel and electronic switches					√
6	Check brushes for wear			√		
7	Clean and wash the upper and lower water tanks in a timely manner	√				
8	Check the wear and tear of the suction rubber		√			
9	Check the use of suction and discharge hoses.	√			√	
10	Checking Clean water discharge	√				
11	Checking the water absorption of the water skimmer	√				

11.2 Battery Maintenance

1. The scrubber system is powered by four 6V maintenance-free batteries in series, with a system voltage of 24V.
2. When the machine operates for a period of time, the battery power will drop, when the last frame of the power display meter is flashing, indicating that the power is insufficient, and must be charged in time.
3. Wear protective gloves when servicing the battery to avoid contact with acidic substances in the battery.
4. The top of the battery and the electrodes should be treated against corrosion by repeatedly wiping them with a brush moistened with soda, but do not pour this solution into the battery.

5. Check the battery cables for wear and tear and contact parts for looseness, and replace them if necessary.
6. The power output terminals on the battery should be kept clean and dry, and there should be no debris and dust on them, which is extremely unfavorable to the battery and will shorten the service life of the battery or even burn the battery.

Tip!

In order to make the battery have a long service life, it should be recharged in time after the machine is finished working, and do not leave the battery in a discharged state for a long time.

WARNING!

Deep discharging of the battery during use will reduce the battery capacity and shorten its life.

Since the battery emits hydrogen gas, the battery case must be kept open and away from sparks or ignition sources during charging to prevent the danger of hydrogen gas emitted from the battery.

12. Troubleshooting

Problem	Cause	Troubleshooting
Brush does not dispense water	Water line is clogged	Check and unclog the water line
	Low water in tank	Tank Filling
	Faulty solenoid valve	Replace solenoid valve
Brush disk motor stops working	Damaged brush motor	Replacement
	Loose or damaged wire harness plugs	Repair or replace
	Faulty panel switch	Replacement
	Motor overcurrent	Overload protection return
	Contactors does not latch	Check line signal or replace contactor
Suction motor stops working	Damaged suction motor	Replacement
	Loose or damaged wire harness plugs	Repair or replace
	Faulty panel switch	Replacement
	Suction microswitch failure	Replacement
	Contactors does not make suction sound	Check line signal or replace contactor
Water marks when suctioning	Foreign matter on the water-absorbing rubber strip	Remove foreign matter
	Absorbent tape not taut or wrinkled	Reinstall the strip
Insufficient suction or can't absorb water	Sewage tank lid not closed	Cover the sewage tank lid
	Lid seal broken	Replace the sealing ring
Insufficient suction power or unable to suction water	Sewage pipe cover is not in place	Cover the drain hose
	Sewage tank is full	Drain the sewage.
	Suction pipe is clogged	Clear the suction pipe
Poor water absorption	Worn suction tape	Replacement of rubber strip
	Gap between the water pickup and the ground	Adjust the universal wheel of the water pickup Height from the ground
	The angle of the rear rubber strip is too big	Adjust the angle of the rear rubber strip
Vehicle cannot be driven(self-propelled)	Battery charge is insufficient	Charging
	Corroded power terminals	Disconnect power, remove nut, clean terminals and reinstall.
	Loose or damaged governor	Repair or replace

	Damaged microswitch	Replacement
	Loose electrical speed plug	Repair or replace
	Vehicle cannot back up	Microswitch signal not connected
Vehicle not energized	Bad key	Replace key
	Loose key cable	Check wiring
	Poor contact of power cord	Check wiring

13.Explanation of machine fault codes

Phenomenon		Cause	Treatment
1	Meter 1 is flashing.	Low voltage	Charge immediately
2	Meter 2 is flashing	Open drive motor connection	Check motor and connecting wires
3	Meter 3 is flashing	Drive motors Long-term overload operation	Stop working. Increase intermittent time
4		Short-circuited connecting wires	Check motor connection wires
5	Meter 4 is flashing	Sump tank full	Empty sewage tank
6	Meter 5 is flashing	Long-term operation overload	Stop working. Increase intermittent time
8	Meter 6 is flashing	Charging port incorrectly plugged in	Plug in correctly
9	Meter 7 is flashing	Gas pedal high end, low end out of range	Replace gas pedal
10		Poor contact with accelerator plug	Plug and connect the wires
11		Incorrect start-up sequence	Turn on the key first, then step on the gas
12	Meter 8 is flashing	Controller malfunction	Replace the controller
13	Meter 10 is flashing	Battery voltage mismatch	Replace battery

14. Battery Maintenance Guide

This product is a lead-acid battery, with maintenance-free, maintenance-free, automatic unloading function; Principle of use: charge as you use, charge after use, don't discharge the electricity often (minimum protection voltage).

1). What is short circuit and how does it affect the battery performance?

It means that the positive and negative terminals of the battery are connected, generating strong current; the positive and negative terminals are connected internally. When charging, the voltage rises very slowly and always stays low; the electrolyte temperature rises very high and fast; the electrolyte density rises very slowly or almost unchanged; the terminal voltage drops rapidly when current is discharged.

2). What is over-discharge and how does it affect the battery performance?

It refers to the phenomenon that the power stored inside the battery continues to be discharged after reaching the minimum working voltage during discharge. After over-discharge, the voltage of the battery will drop dramatically in a short period of time, and the whole internal reaction system of the battery will be disturbed, and if the over-discharge is repeated, the positive electrode will lose its activity, which will affect the service life of the battery. Reduce the use time of the battery and prolong the charging time of the battery.

3). How to save the battery after use?

The battery is a sensitive product, if it is not used for a long time, it is better to take the battery out of the machine and put it in a room temperature and dry place; because the battery is put inside the machine, and the electrical appliances and circuit boards are not disconnected, it will form a continuous micro-discharge of the battery.

4). Why the battery life will be short?

The battery is undercharged for a long time, not charged for a long time after discharging, in the process of using, there are over-discharging phenomena from time to time, when charging, the charger is not selected as standard, resulting in over-charging phenomenon, in the process of using, the voltage between the battery packs generates a difference, and the formation of a long period of time of low-voltage working condition.

Warranty Card

Product <u>Driving Scrubber</u> Name: _____ Product _____ Number: _____ Distributor: _____ Purchase Date: _____	Product <u>SM860</u> Model: _____ Year__month Warranty _____ Period: _____ Invoice No: _____ Channel: _____		
User Unit: _____ Contact Person: _____ Contact Tel: _____ Contact Address: _____			
Maintenance Date	Reason for failure	Opinions	Maintainer

After-sales instructions

Our company has a perfect after-sales service system and customer satisfaction sales commitment.

1. The warranty of the main parts is one year from the date of purchase, except for the wearable and consumable parts and special parts.

2. Users must have the valid purchase invoice and warranty card of the product for repair, and the warranty validity period is calculated from the date of purchase. Users should keep the warranty card and purchase invoice properly, if users lose the purchase invoice and product warranty card, the validity period should be calculated according to the factory date. 3.

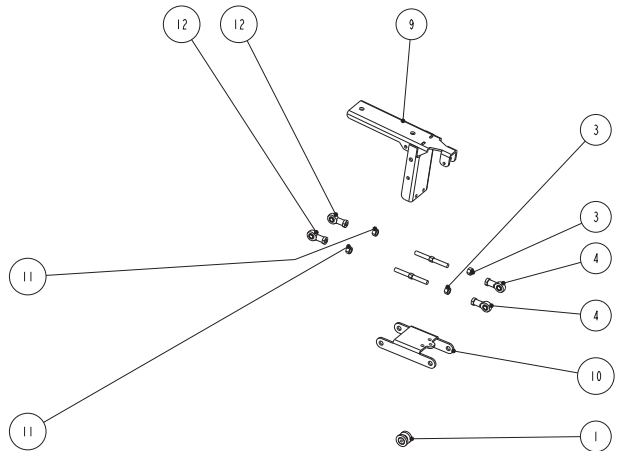
3. According to national regulations, the following items are not covered by the free warranty.

- Damage caused by improper handling, installation, use, maintenance and storage.
- Without warranty certificate and valid purchase invoice.
- The warranty certificate number does not match the physical product code or is altered.
- Damage caused by force majeure.
- If the free warranty period has expired. 4.

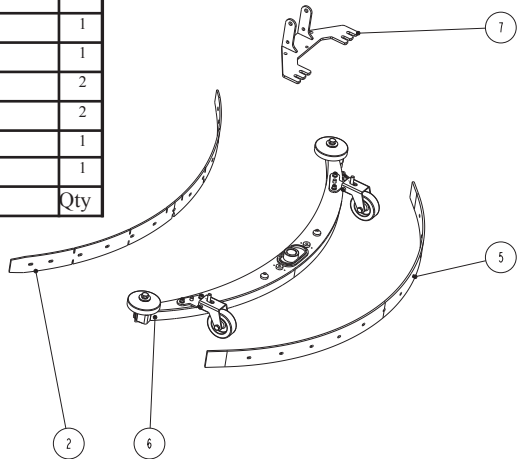
4. Damage to the product caused by accident, abuse, or negligence, or damage to spare parts caused by incorrect use, is not covered by the warranty. We will not be responsible for any direct or indirect damages.

Our company supply cleaning equipment machinery, all through the factory qualified test, good performance, in order to ensure that the transportation does not cause damage, to avoid unnecessary misunderstandings, and then sold by the distributors around the test, please consult the instructions before use.

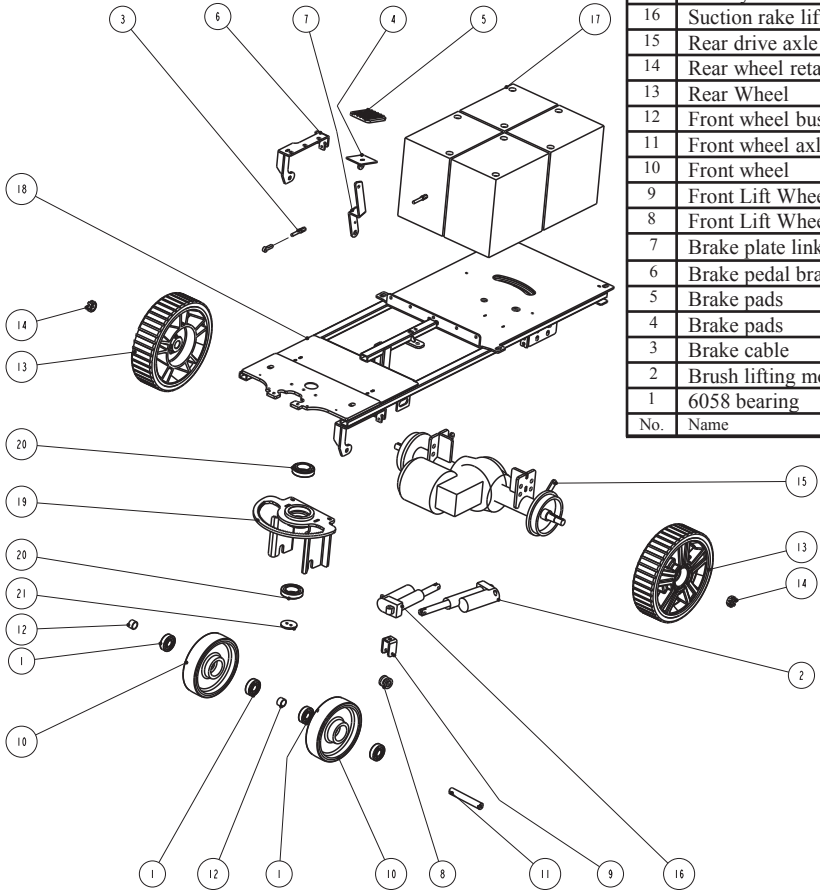
1.Suction pickup assembly



12	Orthodontic adjusting head M10	2
11	Positive nut M10	2
10	Suction rake connecting rod	1
9	Suction rake bracket	1
8	Suction rake fixing nut	2
7	Suction rake fixing plate	1
6	Suction rake	1
5	Rear rubber	1
4	Counterbite Adjustment Head M10	2
3	Counterbite nut M10	2
2	Front rubber	1
1	Front Suspension Wheel	1
No.	Name of wheel	Qty

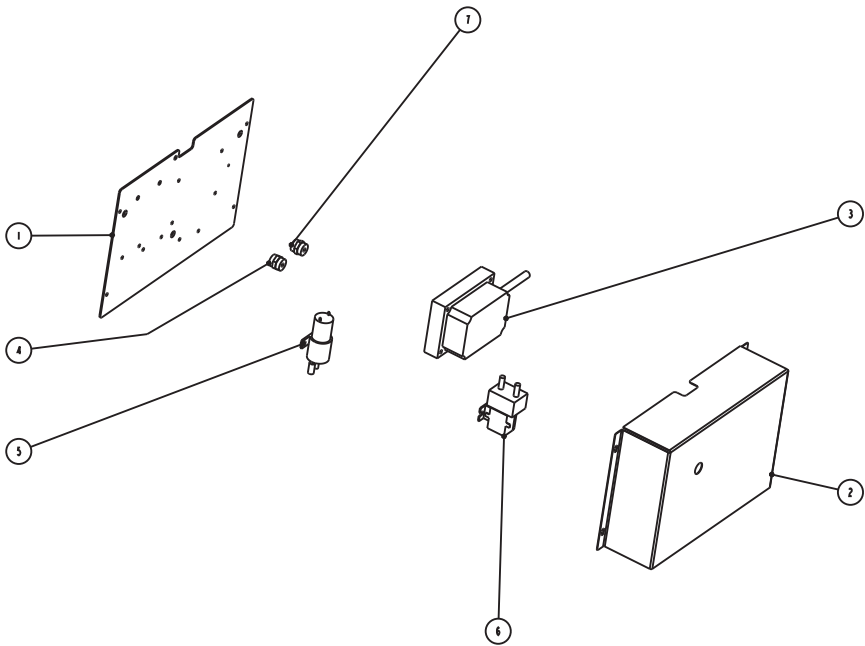


2.Frame assembly



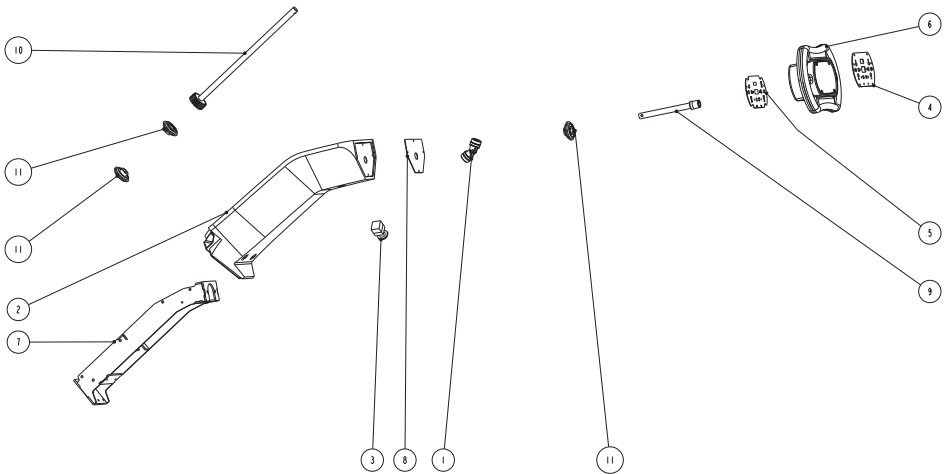
21	Steering Bearing Plate	1
20	Steering bearing	2
19	Steering Dial	1
18	Frame	1
17	Battery	4
16	Suction rake lifting motor	1
15	Rear drive axle	1
14	Rear wheel retaining nut	2
13	Rear Wheel	2
12	Front wheel bushings	2
11	Front wheel axle	1
10	Front wheel	2
9	Front Lift Wheel Bracket	1
8	Front Lift Wheel	1
7	Brake plate linkage	1
6	Brake pedal bracket	1
5	Brake pads	1
4	Brake pads	1
3	Brake cable	2
2	Brush lifting motor	1
1	6058 bearing	4
No.	Name	Qty

3.Junction box



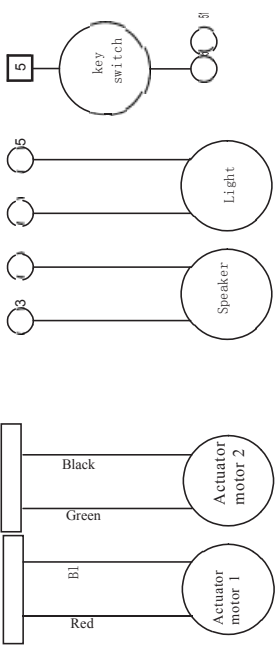
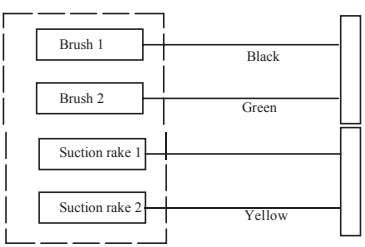
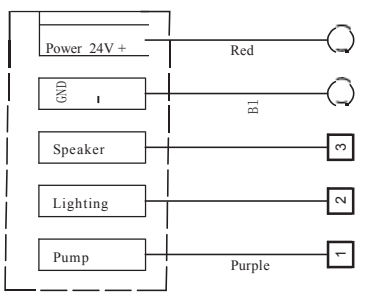
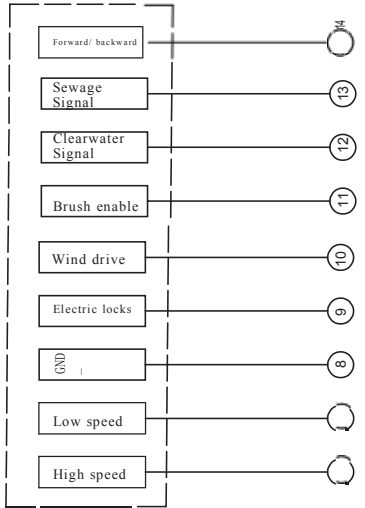
7	Negative insulator	1
6	Relay	1
5	Fresh water pump	1
4	Positive insulators	1
3	Controller	1
2	Protective cover for junction box	1
1	Terminal block mounting plate	1
No.	Name	Qty

5. Steering components



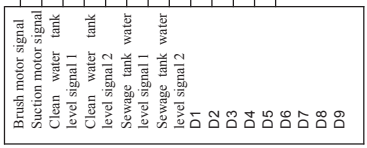
11	Steering Compression Bearing	3
10	Steering lower linkage	1
9	Steering upper linkage	1
8	Steering rack upper plate	1
7	Steering Wheel Bracket	1
6	Steering wheel	1
5	Control PCB	1
4	Pushbutton film	1
3	Emergency stop switch	1
2	Front Bracket	1
1	10,000toSection	1
No.	Name	Qty

steering wheel control pcb



Drive Load

Load side



Docking PCB side

