

STARFISH WIFI SMART INDOOR/ OUTDOOR STRING LIGHTS

Model: S11290, S11291, S11292



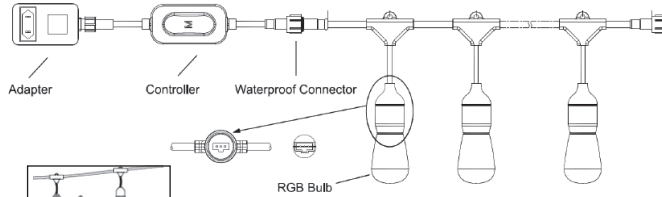
STARFISH™
Live life enlightened

INSTALLATION AND SAFETY INSTRUCTIONS

IMPORTANT: Read before installing fixture. Retain for future reference.

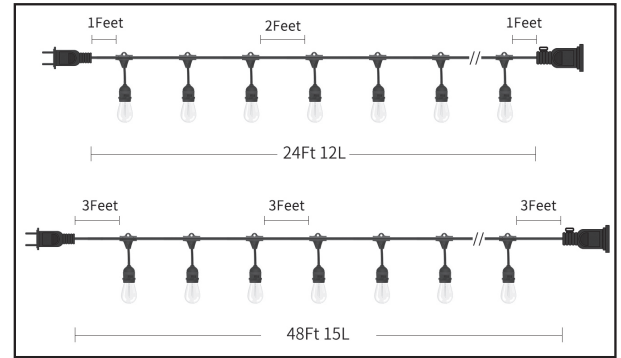
WARNING: Risk of Fire or Electric Shock

- Installation requires knowledge of luminaries electrical systems. If not qualified, do not attempt installation. Contact a qualified electrician.
- To reduce risk of fire and over-heating, secure all connections.
- TURN OFF the electrical power before proceeding.
- The electrical rating of this product is 100-120V/50-60Hz.
- The grounding and banding of the overall system shall be done in accordance with National Electric Code (NEC) Article 600 and local codes.
- **Do not overload.** Each string light set is rated for wattage and number of sets connectable end-to-end. Please see chart for maximum wattage per set and number of sets of the same type that can be connected end-to-end.
- Never use with an extension cord unless the plug can be fully inserted. DO NOT alter the plug.
- To reduce the risk of electric shock, DO NOT use the product if power cord is frayed or broken.
- Always unplug this product before installing or replacing bulbs.
- To avoid risk of fire, burns, personal injury and electric shock, it should not be played with or placed where small children can reach it.



CONTENTS:

- 1 String Light with LED Bulbs
- 1 Adapter
- 1 Controller



NOTE: This device complies with part 15 of the FCC Rules. Operation is subject to the following two conditions: (1) This device may not cause harmful interference; (2) This device must accept any interference received, including interference that may cause undesired operation. Visit www.Satco.com for full warranty details and dimmer compatibility information.

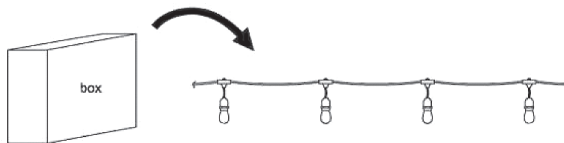
Item	Max Wattage/set	Max Connectable sets
S11290	12W	CONNECT UP TO 72 FEET (3 SETS)
S11291	15W	CONNECT UP TO 144 FEET (3 SETS)
S11292	12W	CONNECT UP TO 72 FEET (3 SETS)

INSTALLATION

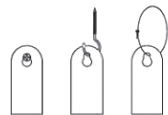
NOTE: DO NOT DRAPE CORD. KEEP AWAY FROM CHILDREN.

Before beginning installation of product, make sure all parts are present. If any part is missing or damaged, do not attempt to install the product. No tools are required for installation.

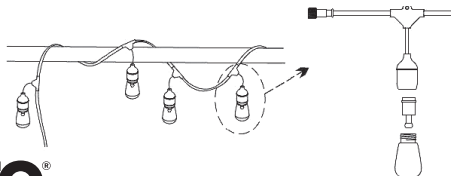
STEP 1: Carefully unpack string lights from box. Straighten string lights, eliminating any kinks before using.



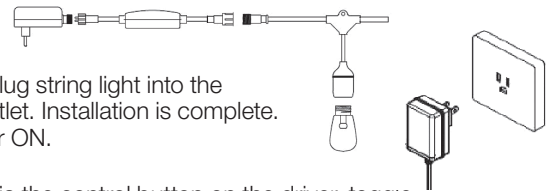
STEP 2: Each string light is designed with a universal keyhole for mounting with lights hanging downward. Hardware options (not included) screws, nails, zip ties, hooks and more.



STEP 3: Before plugging power cord of lights into a wall outlet, make sure each light bulb is securely fastened. Install the bulbs into the sockets.



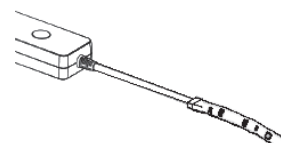
STEP 4: Connect the string light with the controller and adapter.



STEP 5: Plug string light into the nearest outlet. Installation is complete. Turn power ON.

STEP 6: Via the control button on the driver, toggle through the functions:

- Warm White – ON
- Cool White – ON
- Warm and Cool White – ON
- RGB – ON
- OFF
- Press and hold on for 8 seconds to connect APP



STEP 7: App Connection: To connect your device, download the free “Starfish Smart Lighting” App from the app store. Please refer to our Starfish User Guide for detailed instructions on how to pair your device.



Download the
STARFISH App



Satco Products, Inc.
Brentwood, NY 11717