

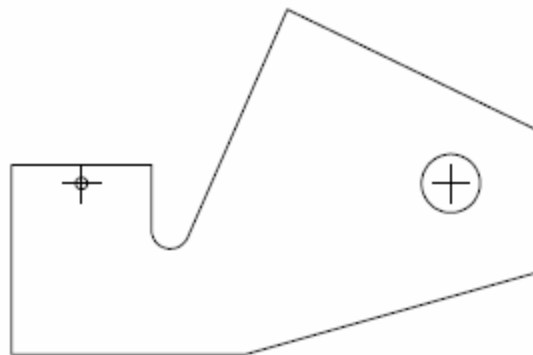


MADE IN AMERICA

# STEEDA

## 2015+ Ford Mustang Hood Strut Kit

555-0687



1. Raise and support the hood with the prop rod.
2. Install the neoprene adhesive padding onto the back of the hood hinge brackets. See figure 1.
3. Install the hood brackets. The bracket with the extra hole installs on the passenger side. The windshield washer reservoir line will need to be removed from the hood, and placed into the hole on the new hood strut bracket. See figure 2. Remove the top nut on the hood hinge, and place the correct bracket over the stud. Replace the nut and tighten to 17 ft-lbs (**10ft-lbs for 2018+ models**). Repeat for the other side.
4. The battery cover has to be modified to work with the new fender brackets. Use the template above as a guide to drill the clearance hole. Remove the front, outside push pin from the battery cover. Place the template onto the battery cover, and insert the push pin back through the battery cover and fender. Line the template up with the rubber edges as shown in figure 3 and 4, and mark the battery cover through the small hole, to be used for a drill point. Remove the remaining push pins in the battery cover. Drill a small pilot hole, and then open it up to 7/8".
5. Install the fender brackets. Locate the hole just inside the fender, near the battery cover. Using the supplied M8 bolt and fender bracket support, install the bolt through the fender bracket, and into the support piece. See figure 5. **Note: Place a small amount of blue loctite onto threads of the bolt, before tightening it down completely. Allow some time for the loctite to cure (curing time depends on brand used, and temperature), before installing the struts.** Screw it a couple threads and then install it into the hole in the fender, and torque to 20 ft-lbs. See figure 6 for correct orientation of the fender bracket. Note: After inserting the threaded support piece, make sure it is turned to where the long end of it is pointing left to right on the car. The piece in the fender will lock into place, to allow you to tighten it with ease. Repeat for the other side.
6. Replace the battery cover.
7. Install the hood struts. Install the cylinder end (thicker end) of the strut onto the hood bracket. Place the socket of the struts onto the ball studs, and push. They will automatically lock into position.
8. Remove factory hood prop if desired.

