

Charting and Graphing Sales

Lunch Survey- Guided Practice

Step 1: Collect Data and Fill in Table

<u>Student Name</u>	<u>Lunch Choice</u>	<u>Lunch Category</u>
Tanya	Ham sandwich	Sandwich
David	Pizza	Hot meal
Joelle	Spaghetti	Hot meal
Tory	Caesar salad	Salad
Pedro	Chicken fingers	Hot meal
Kevin	Strawberry yogurt	Yogurt
Sarah	Chicken noodle soup	Soup
Jackie	Tuna rollup	Sandwich
Carl	Caesar salad	Salad
Mike	Pizza	Hot meal
Joanne	Spaghetti	Hot meal
Garcia	Raspberry yogurt	Yogurt
Emanuel	Banana	Fruit
Tyrone	Pizza	Hot meal
Matt	Chicken fingers	Hot meal
Marco	Garden salad	Salad
Laura	Peanut butter & jelly	Sandwich
Taylor	Melon	Fruit
Tasha	Apple	Fruit
Jamal	Ham sandwich	Sandwich
Eric	Roast beef sandwich	Sandwich
Seth	Pizza	Hot meal

Step 2: Complete Lunch Category Table

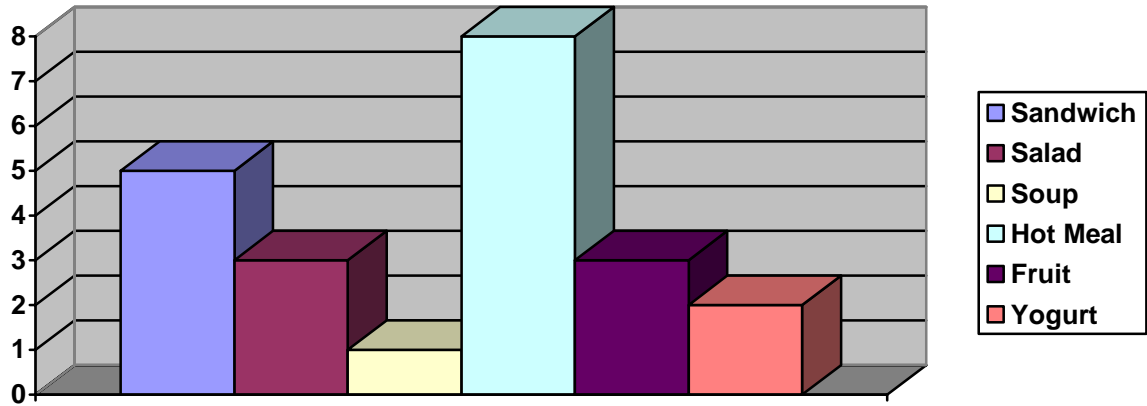
Lunch Category	Number	% of Total Lunches
Sandwich	5	$5/22 = 23\%$
Salad	3	$3/22 = 14\%$
Soup	1	$1/22 = 5\%$
Hot Meal	8	$8/22 = 35\%$
Fruit	3	$3/22 = 14\%$
Yogurt	2	$2/22 = 9\%$
Total Lunches	22	100%

Charting and Graphing Sales

Lunch Survey- Guided Practice

Step 3: Create a Bar Graph

Use data in Step 2 to create a bar graph.



Lunch Choices

Step 4: Create a Pie Chart

Use percentages in Step 2.

