



Edwards nES40ex, 65ex, 100ex

Technical Specifications

		nES40ex	nES65ex	nES100ex
Maximum displacement (50 Hz)	m ³ h ⁻¹ / cfm	44.0 / 25.9	59.0 / 34.8	98.0 / 57.4
Maximum displacement (60 Hz)	m ³ h ⁻¹ / cfm	53.0 / 31.2	71.0 / 41.8	117 / 68.9
Pumping Speed (50 Hz)	m ³ h ⁻¹ / cfm	38.5 / 22.7	54.0 / 31.8	87.5 / 51.5
Pumping Speed (60 Hz)	m ³ h ⁻¹ / cfm	47.0 / 27.7	64.0 / 37.7	105 / 61.8
Ultimate vacuum (total pressure) no gas ballast	mbar / torr	0.5 / 0.4	0.5 / 0.4	0.5 / 0.4
Ultimate vacuum (total pressure) with gas ballast	mbar / torr	1.5 / 1.1	1.5 / 1.1	1.5 / 1.1
Inlet connection	ISO / ANSI	DN40 / ANSI 1"1/2	DN40 / ANSI 1"1/2	DN40 / ANSI 1"1/2
Outlet connection	ISO / ANSI	DN40 / ANSI 1"1/2	DN40 / ANSI 1"1/2	DN40 / ANSI 1"1/2
Max permitted outlet pressure	bar (abs)	1.15	1.15	1.15
Max water vapour pumping rate (50 Hz)	kg h ⁻¹ / lb h ⁻¹	0.76 / 0.80	1.0 / 1.1	1.60 / 1.69
Max water vapour pumping rate (60 Hz)	kg h ⁻¹ / lb h ⁻¹	0.90 / 0.95	1.25 / 1.32	1.70 / 1.80
Dimensions (L, W, H)	mm	686 / 356 / 303	748 / 386 / 349	810 / 434 / 319
Weight	kg / lb	67 / 148	86 / 190	104 / 230
Motor Protection rating		IP55	IP55	IP55
Motor Power (50 Hz)	kW / hp	1.5 / 2.0	2.2 / 3.0	3.0 / 5.0
Motor Power (60 Hz)	kW / hp	1.8 / 3.0	2.6 / 4.0	3.6 / 6.0
Noise level (50 Hz)	dB(A)	58	60	61
Noise level (60 Hz)	dB(A)	60	64	64
Oil Refill Capacity	litre	1	2	2
Recommended oil	Ultragrade Endurance Extend 110			



PROVAC

SALES

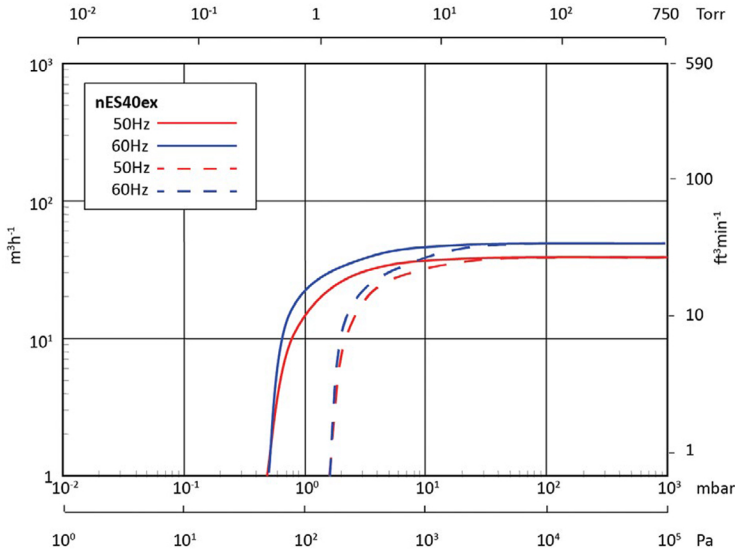
PHONE: 831-462-8900

FAX: 831-462-3536

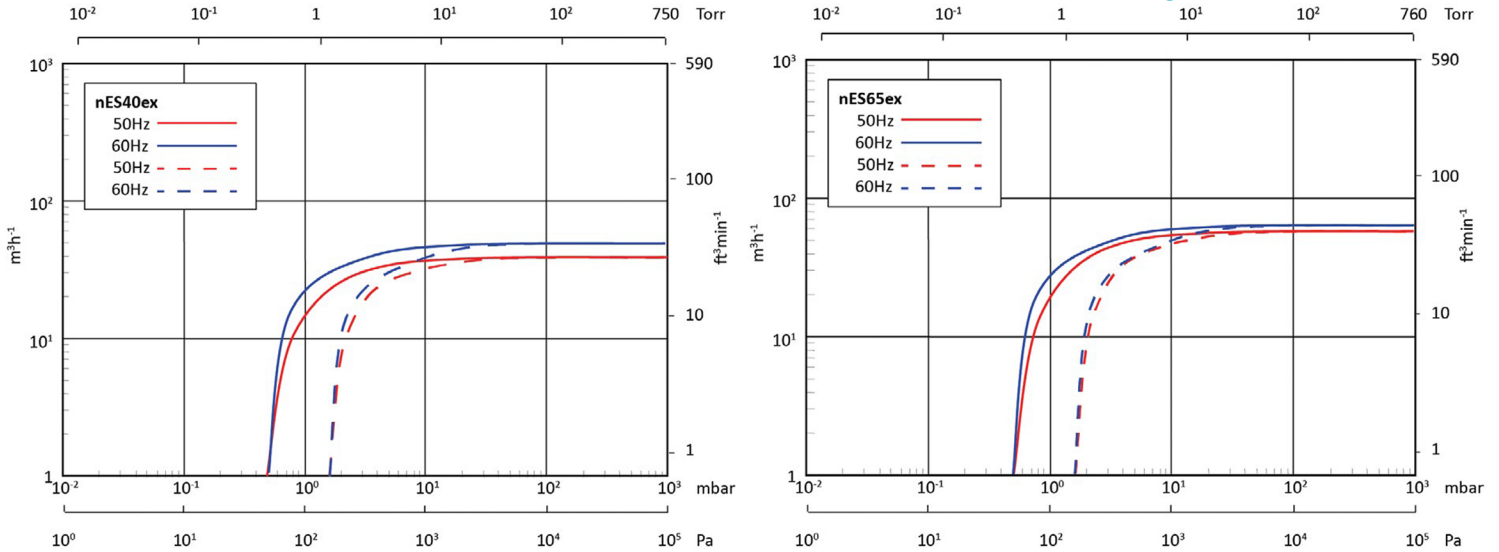
WWW.PROVAC.COM

Edwards nES40ex, 65ex, 100ex Pumping Curves

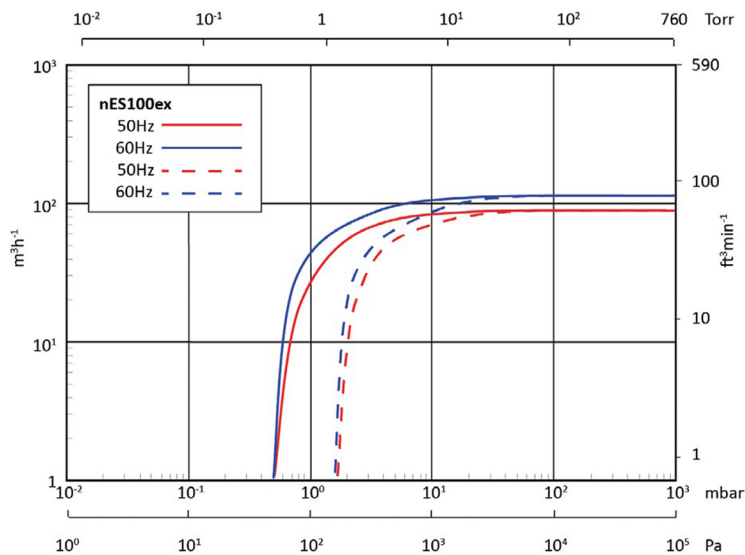
nES40ex



nES65ex



nES100ex



Without gas ballast

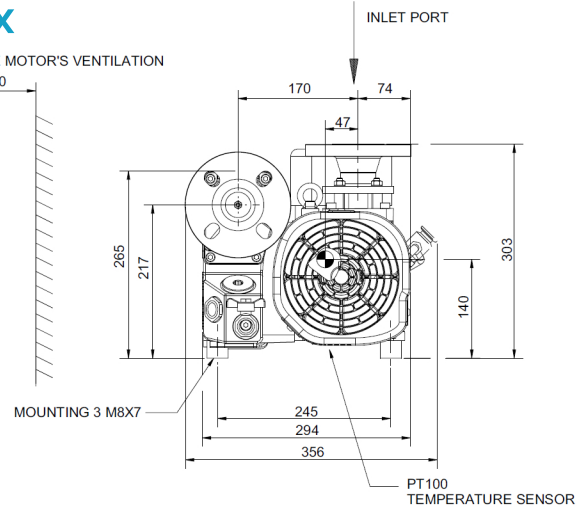
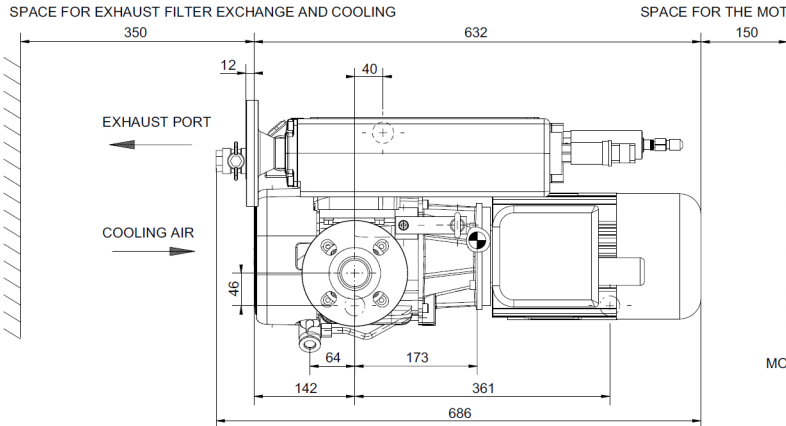


With gas ballast

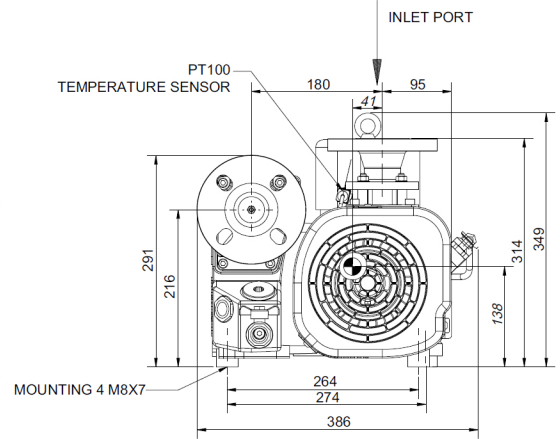
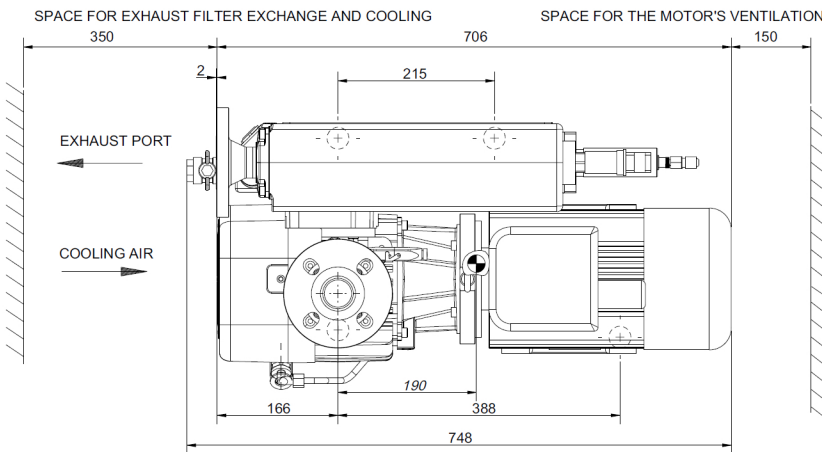


Edwards nES40ex, 65ex, 100ex Dimensions

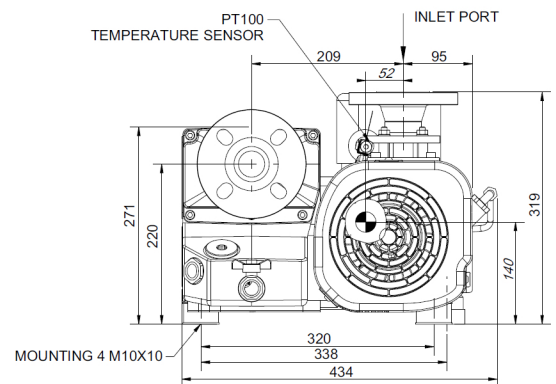
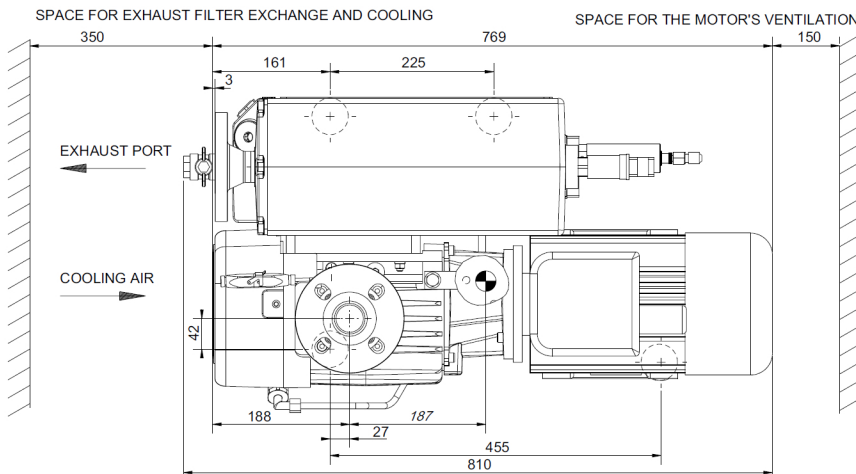
nES40ex



nES65ex



nES100ex





PROVAC

SALES

PHONE: 831-462-8900

FAX: 831-462-3536

WWW.PROVAC.COM

Edwards nES40ex, 65ex, 100ex Features & Benefits

- single stage oil sealed vane pumps for use in explosive environments
- specifically designed to handle gases from an explosive atmosphere
- equipped with sensors for pump temperature, pressure in oil casing, oil level, & PTC motor thermistors
- supplied with exhaust mist filter, FPM seals, oil filter bypass, gas ballast
- designed for minimal hot spots, ensuring lowest possible temperature
- clean operation & low maintenance
- efficient air flow management system
- extended intervals between oil change
- high pumping speeds at low pressures
- space efficient through compact design
- low noise & vibration
- direct drive motor

Applications

- chemical • pharmaceutical • sterilising with ethylene oxide • recovery of air conditioning gases • degassing of power plant alternator oil
- automotive • gas vapour recovery • gas bottle filling