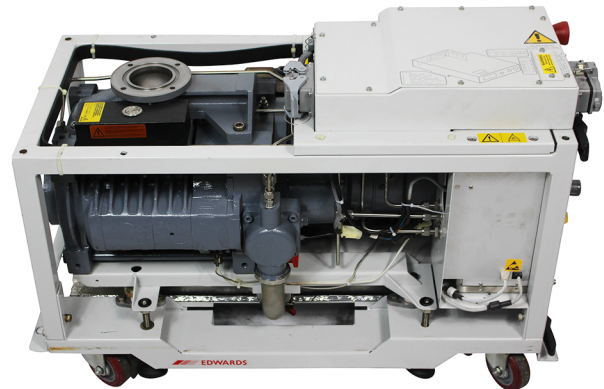




Edwards iQDP-40, iQDP-80

Technical Specifications

iQ system →			iQDP40	iQDP80
Parameter		Units		
Typical peak pumping speed	50 Hz	$\text{m}^3 \text{h}^{-1}$	44	80
	60 Hz	$\text{m}^3 \text{h}^{-1}$	55	96
Displacement (swept volume)	50 Hz	$\text{m}^3 \text{h}^{-1}$	52.0	91.5
	60 Hz	$\text{m}^3 \text{h}^{-1}$	62.4	109.8
Typical ultimate vacuum with shaft-seals purge only	50 Hz	mbar	5×10^{-2}	3×10^{-2}
		Pa	5	3
	60 Hz	mbar	3×10^{-2}	1×10^{-2}
		Pa	3	1
Maximum continuous inlet pressure		mbar	1×10^3	1×10^3
		Pa	1×10^5	1×10^5
Inlet connection		-	ISO40 bolted	ISO63 bolted
Outlet connection		-	NW40	NW40





PROVAC

SALES

PHONE: 831-462-8900

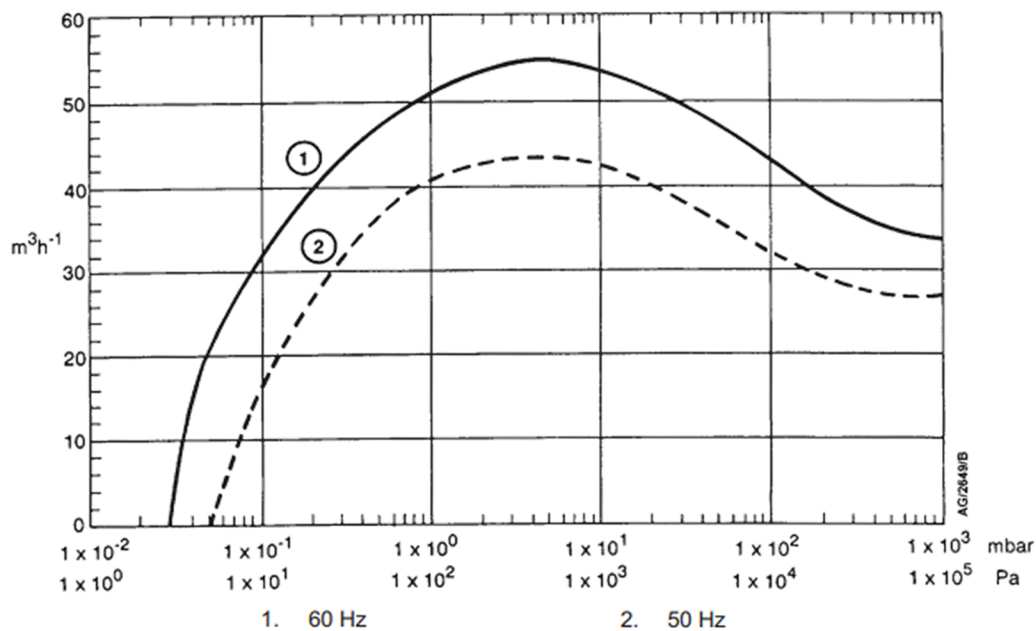
FAX: 831-462-3536

WWW.PROVAC.COM

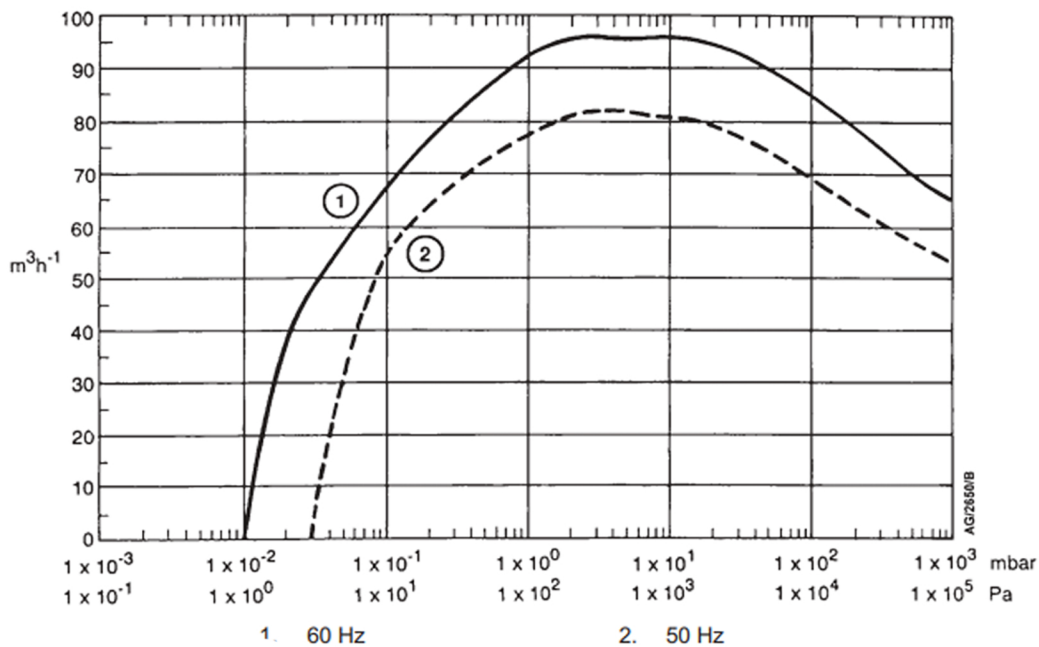
Edwards iQDP-40, iQDP-80

Pumping Speeds

iQDP-40



iQDP-80





PROVAC

SALES

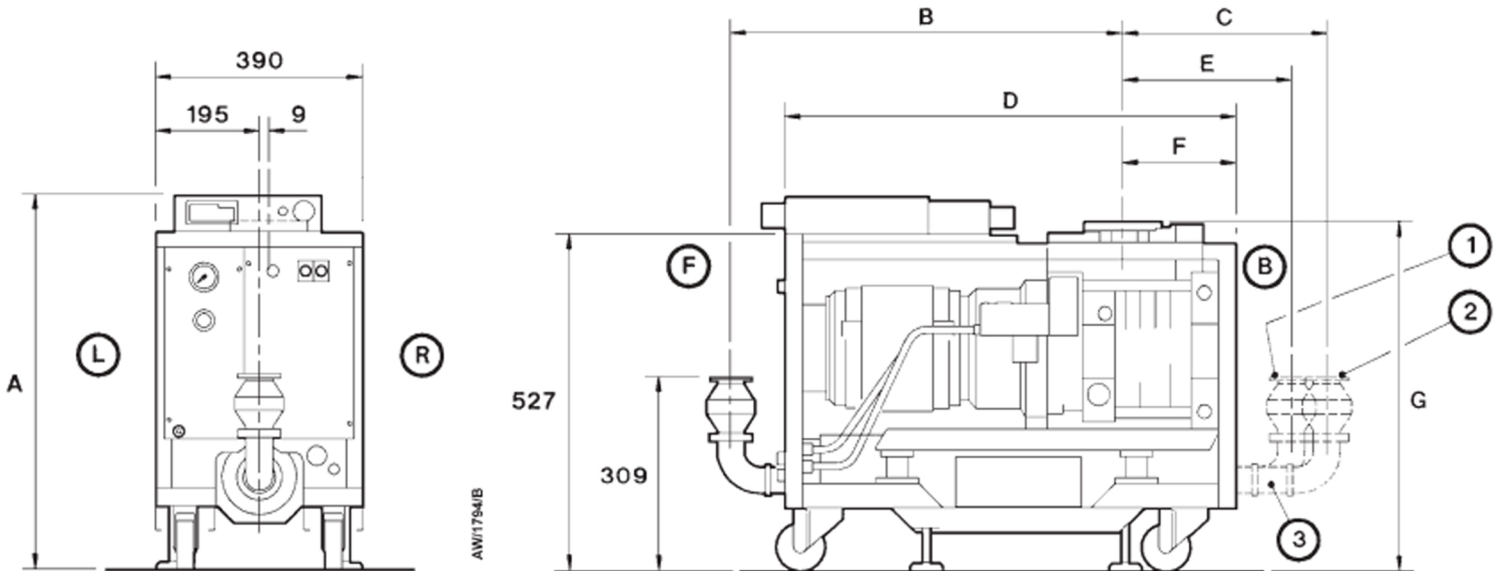
PHONE: 831-462-8900

FAX: 831-462-3536

WWW.PROVAC.COM

Edwards iQDP-40, iQDP-80

Dimensions



- 1. Alternative outlet position (without adaptor)
- 2. Alternative outlet position (with adaptor)
- 3. Adaptor

- L Left-hand side of iQ system
- R Right-hand side of iQ system
- F Front of iQ system
- B Back of iQ system

Pumping system	A	B	C	D	E	F	G
iQDP40	597	581	-	695	371	199	554
iQDP80	597	723	337	830	283	188	528

Dimensions of iQDP40 and iQDP80 systems without acoustic enclosures (mm)