



PROVAC

SALES

PHONE: 831-462-8900

FAX: 831-462-3536

WWW.PROVAC.COM

Pfeiffer TPH-170, TPU-170

Technical Specifications

		TPH 170	TPU 170
Nominal diameter			
Inlet		DN 100 ISO-K	DN 100 CF
Outlet		DN 25 KF	
Volume flow rate for			
Nitrogen N ₂	l/s	170	
Helium He	l/s	130	
Hydrogen H ₂	l/s	110	
Recommended backing pump	m ³ /h	1,5 – 16	
Compression ratio for			
N ₂		8 · 10 ⁸	
He		2 · 10 ⁴	
H ₂		1,1 · 10 ³	
Ultimate op. pressure			
Ultimate pressure			
1 2)	mbar	1 · 10 ⁻¹⁰	
2 2)	mbar	1 · 10 ⁻⁹	
3 2)	mbar	5 · 10 ⁻⁸	
Speed	1/min	43000	
Start-up time	min	1	
Oil filling	cm ³	2 x 6	
Cooling water requirement for watertemperatur 15 °C			
	l/h	15	
Water temperature	°C	5 – 25	
Permissible ambient temperature for air cooling	°C	0 – 35	
Power input of heater	Watt	-	60
Weight	kg	7	9
Permissible magnetic field ³⁾	mT	7	



PROVAC

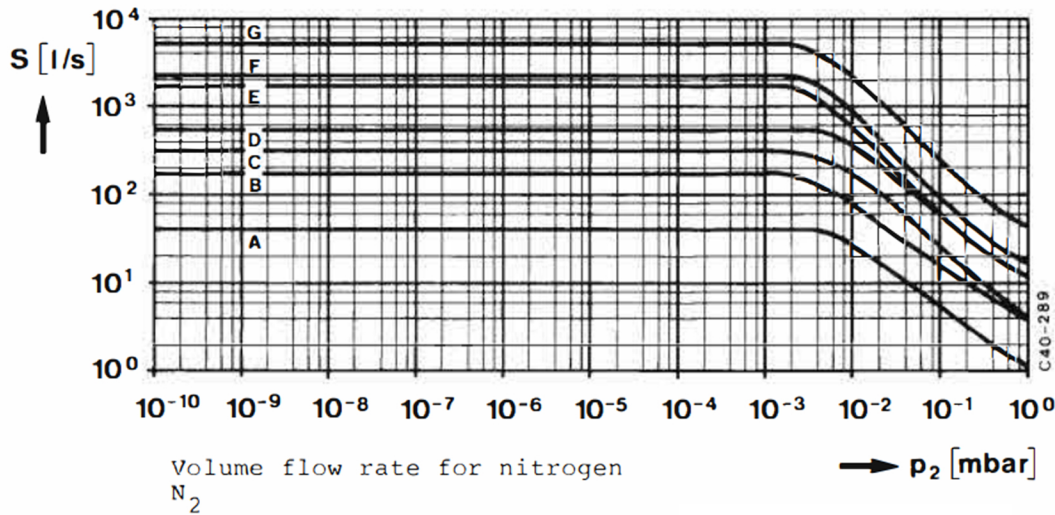
SALES

PHONE: 831-462-8900

FAX: 831-462-3536

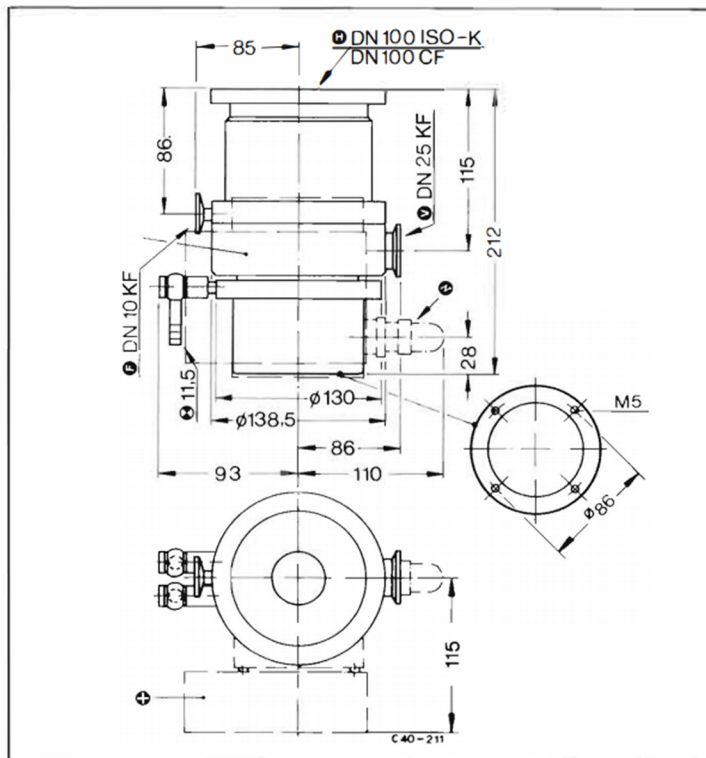
WWW.PROVAC.COM

Pfeiffer TPH-170, TPU-170 Pumping Curves



- A TPH 050 / TPU 050
- B TPH 170 / TPU 170
- C TPH 330 / TPU 330
- D TPH 510 / TPU 510
- E TPH 1500 / TPU 1500
- F TPH 2200 / TPU 2200
- G TPH 5000

Dimensions



- ⊕ High-Vacuum Connection
- ∇ Fore-Vacuum Flange
- ⊕ Venting Connection
- ⊗ Coolant Connection
- ⊕ Connector for Electronic Drive
- ⊕ Air Cooling



PROVAC

SALES

PHONE: 831-462-8900

FAX: 831-462-3536

WWW.PROVAC.COM

Pfeiffer TPH-170, TPU-170

Applications

- freeze drying - packaging industry • degassing, casting, dry vacuum smelting (super-pure metals) • incandescent lamp manufacturing
- electronic tubes • thin film deposition • space simulation • cryogenic research • electron microscopy • nuclear/plasma/high energy physics,
- particle accelerators - storage rings

Recommended controller/backing pump

- controller: TCP-121 • TCP-300 • TCP-310 • TCS-302
- backing pump: DUO/UNO 004B - DUO/UNO 016B

