



PROVAC

S A L E S

PHONE: 831-462-8900

FAX: 831-462-3536

WWW.PROVAC.COM

Pfeiffer TMH-262, TMU-262

Technical Specifications

Pumping speed: for N ₂	210 l/s
Pumping speed: for He	220 l/s
Pumping speed: for H ₂	190 l/s
Compression ratio for N ₂	1·10 ⁹
Compression ratio for He	3·10 ⁵
Compression ratio for H ₂	1.3·10 ⁴
Gas throughput for N ₂	7 mbar l/s
Gas throughput for He	6 mbar l/s
Gas throughput for H ₂	3.5 mbar l/s
Ultimate pressure with rotary vane pump	TMH < 1·10 ⁻⁷ mbar, TMU < 5·10 ⁻¹⁰ mbar
Ultimate pressure with diaphragm pump	TMH < 1·10 ⁻⁷ mbar, TMU < 1·10 ⁻⁸ mbar
Recommended backing pump	MVP 015-2, MVP 035-2, DUO 5
Rotational speed ±2%	60000 1/min
Rotational speed: variable %	20-100
Run-up time	3.5 min
Cooling method	water, air
Cooling water consumption	100 l/h
Weight	TMH 5 kg, TMU 7 kg
Fore Vacuum max. for N ₂	10 mbar



PROVAC

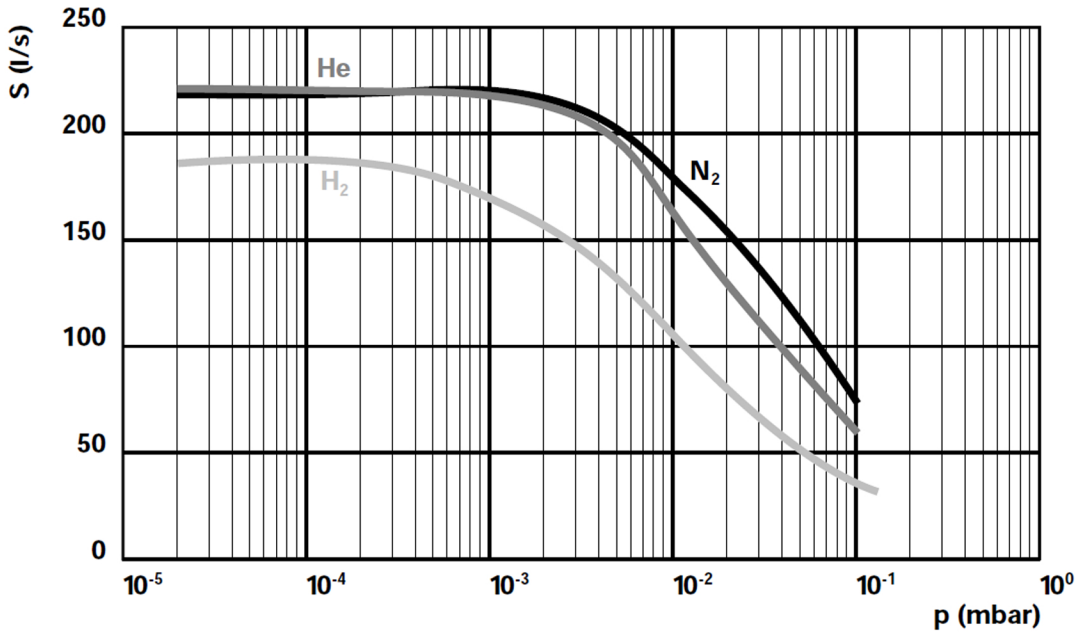
SALES

PHONE: 831-462-8900

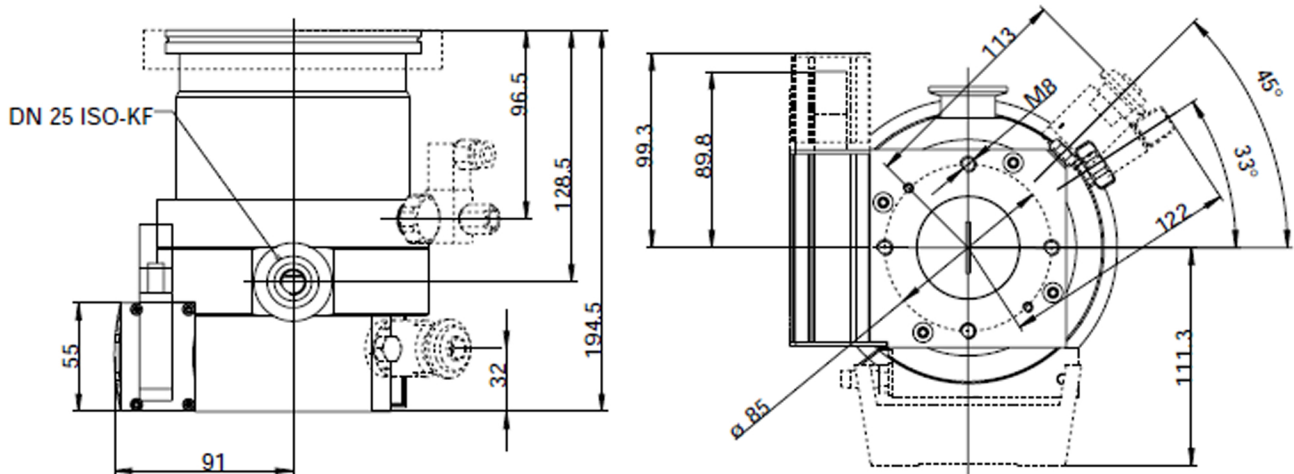
FAX: 831-462-3536

WWW.PROVAC.COM

Pfeiffer TMH-262, TMU-262 Pumping Curves



Dimensions





PROVAC

S A L E S

PHONE: 831-462-8900

FAX: 831-462-3536

WWW.PROVAC.COM

Pfeiffer TMH-262, TMU-262

Features & Benefits

- pump and drive form single unit
- simple and economical system solution
- modular design for maximum flexibility
- all components connects on the plug & play principle
- minimal space requirements for the entire system
- integrated serial interface provides additional versatility

Applications

- semiconductor processes • thin film coatings • mass spectrometry
- process gas monitors • research and development • UHV technology
- HV technology • vacuum processing • accelerators • fusion

Recommended backing pumps

- Diaphragm pumps: MVP 015-2 • MVP 035-2 • MVP 055-3
- Vane pumps; DUO 5