



# Leybold SV-200, SV-300

## Technical Specifications

		SOGEVAC SV 200		SOGEVAC SV 300	
		50 Hz	60 Hz	50 Hz	60 Hz
Nominal speed <sup>1)</sup>	m <sup>3</sup> x h <sup>-1</sup> (cfm)	180 (106.0)	220 (129.5)	280 (164.9)	340 (200.3)
Pumping speed <sup>1)</sup>	m <sup>3</sup> x h <sup>-1</sup> (cfm)	170 (100.1)	200 (117.8)	240 (141.4)	290 (170.0)
Ultimate partial pressure without gas ballast <sup>1)</sup>	mbar (Torr)	≤ 8 x 10 <sup>-2</sup> (≤ 6 x 10 <sup>-2</sup> )	≤ 8 x 10 <sup>-2</sup> (≤ 6 x 10 <sup>-2</sup> )	≤ 8 x 10 <sup>-2</sup> (≤ 6 x 10 <sup>-2</sup> )	≤ 8 x 10 <sup>-2</sup> (≤ 6 x 10 <sup>-2</sup> )
Ultimate total pressure with gas ballast <sup>1)</sup>	mbar (Torr)	≤ 0.7 (≤ 0.5)	≤ 0.7 (≤ 0.5)	≤ 0.7 (≤ 0.5)	≤ 0.7 (≤ 0.5)
Water vapor tolerance with standard gas ballast <sup>1)</sup>	mbar (Torr)	30.0 (22.5)	40.0 (30.0)	30.0 (22.5)	40.0 (30.0)
	with big gas ballast <sup>2)</sup>	mbar (Torr)	50.0 (37.5)	50.0 (37.5)	50.0 (37.5)
Water vapor capacity with standard gas ballast	kg x h <sup>-1</sup> (qt/hr)	3.4 (3.6)	5.4 (5.7)	5.4 (5.7)	7.4 (7.8)
Oil capacity, min. / max.	l (qt)	5.0 (5.3) / 9.0 (9.5)	5.0 (5.3) / 9.0 (9.5)	8.5 (8.9) / 11.5 (12.1)	8.5 (8.9) / 11.5 (12.1)
Noise level <sup>3)</sup>	dB(A)	69	73	70	74
Admissible ambient temperature	°C (°F)	12 to 40 (54 to 104)	12 to 40 (54 to 104)	12 to 40 (54 to 104)	12 to 40 (54 to 104)
Motor power	kW (hp)	4.0 (5.5)	4.6 (6.2)	5.5 (7.5)	6.3 (8.5)
Nominal speed	min <sup>-1</sup> (rpm)	1450 (1450)	1750 (1750)	1450 (1450)	1750 (1750)
Type of protection	IP	55	TEFC/55 <sup>4)</sup>	55	TEFC/55 <sup>4)</sup>
Weight (with oil filling)	kg (lbs)	140 (308.7)	155 (341.8)	180 (396.9)	195 (430.0)
Dimensions (W x H x D)	mm (in.)	940 x 535 x 415 (37.0 x 21.06 x 17.71)	940 x 535 x 415 (37.0 x 21.06 x 17.71)	1080 x 535 x 415 (42.51 x 21.06 x 17.71)	1080 x 535 x 415 (42.51 x 21.06 x 17.71)
Connections <sup>5)</sup>					
Intake, Thread	G or NPT	2"	2"	2"	2"
Exhaust, Thread	G or NPT	2"	2"	2"	2"

<sup>1)</sup> To DIN 28 400 and following numbers

<sup>2)</sup> Ordering Information see Section "Accessories"

<sup>3)</sup> Operated at the ultimate pressure without gas ballast, free-field measurement at a distance of 1 m

<sup>4)</sup> CEI motor (Europe) 50/60 Hz has IP 55, NEMA motor (North and South America) has TEFC

<sup>5)</sup> Pumps with European and Japanese motors have G, pumps with US (NEMA) motors have NPT



# PROVAC

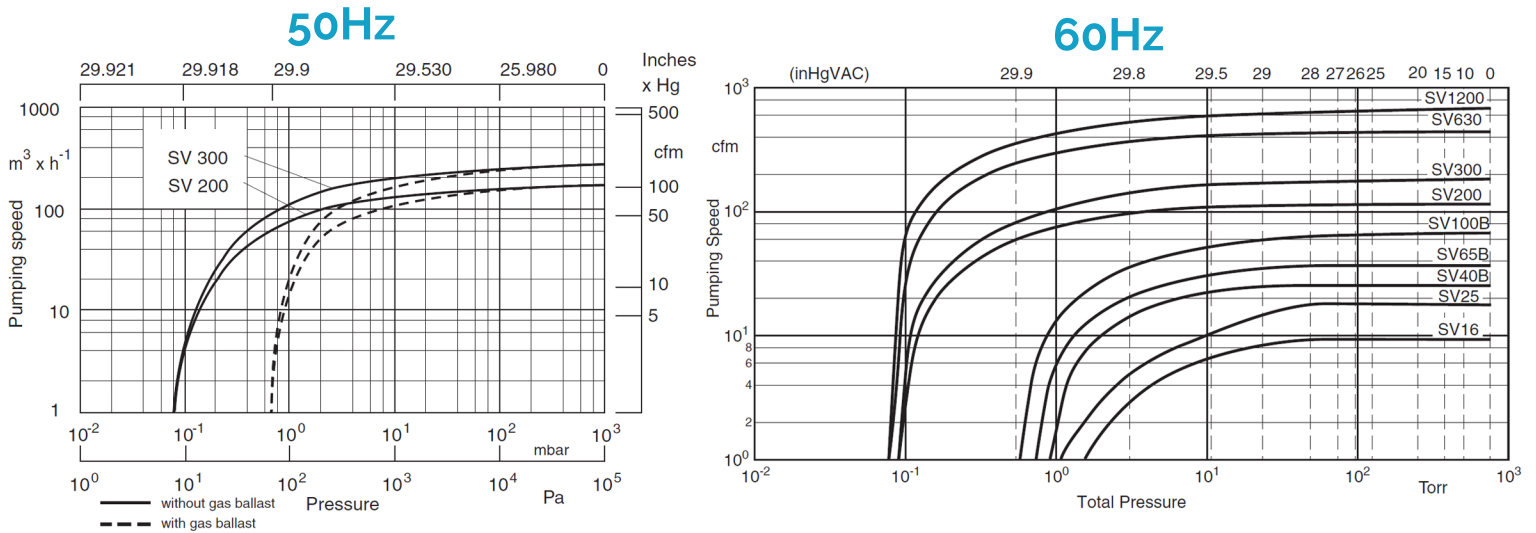
## SALES

PHONE: 831-462-8900

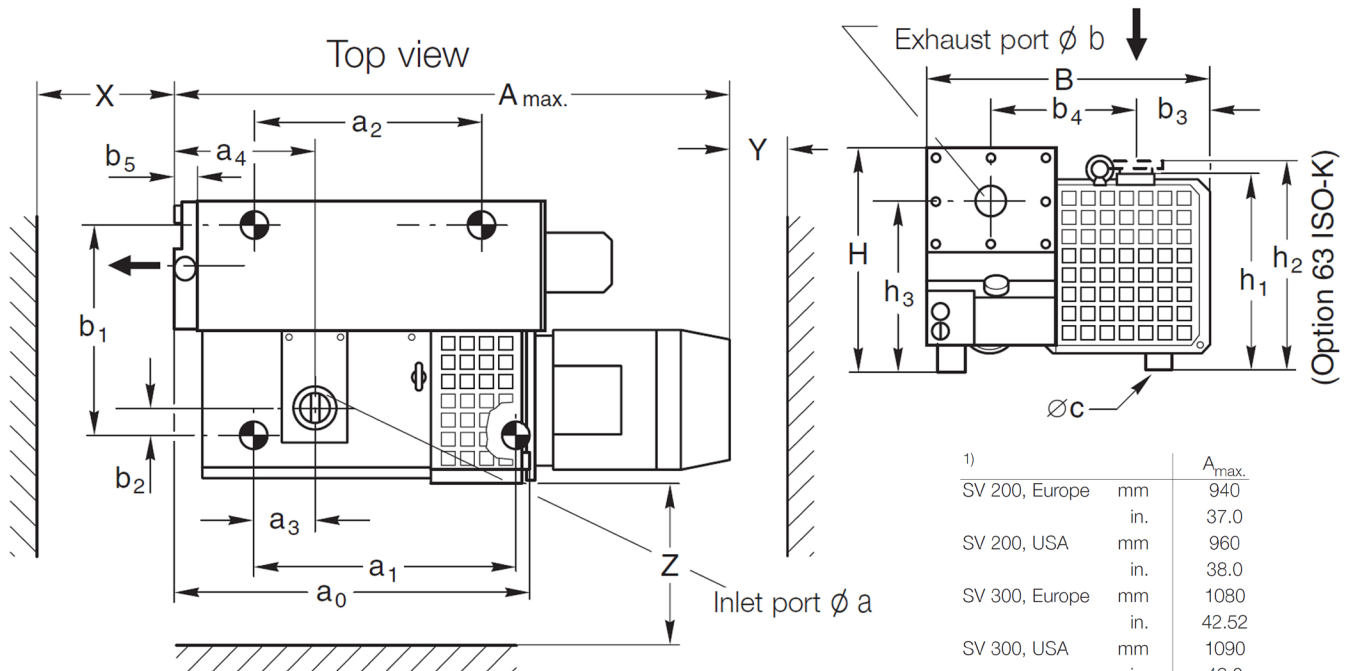
FAX: 831-462-3536

WWW.PROVAC.COM

# Leybold SV-200, SV-300 Pumping Curves



## Dimensions





# PROVAC

## SALES

PHONE: 831-462-8900

FAX: 831-462-3536

WWW.PROVAC.COM

## Leybold SV-200, SV-300 Features & Benefits

- built-in exhaust filters
- gas ballast valve
- high water vapor tolerance
- anti-suckback valve
- automatic oil return system
- direct drive & belt driven motor
- low noise & vibration
- compact & easy to operate
- continuous operation from atmosphere to below 1 Torr
- easy maintenance & replacement of components

## Applications

- vacuum coating • chemistry • pharmaceuticals • metallurgy • furnaces
- automotive • space simulation • environment/electrical/mechanical engineering • medical technology • freeze drying systems • plant engineering • power engineering • district heating • packaging

