



PROVAC

SALES

PHONE: 831-462-8900

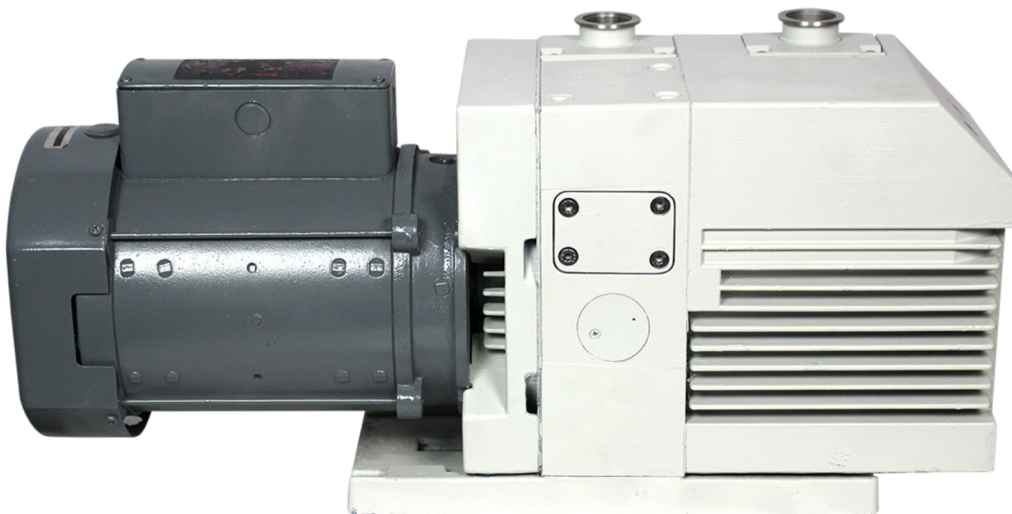
FAX: 831-462-3536

WWW.PROVAC.COM

Leybold S-40B, S-65B Technical Specifications

		S 40 B	S 65 B
Nominal pumping speed*	$\text{m}^3 \cdot \text{h}^{-1}$	46	75
Pumping speed*	$\text{m}^3 \cdot \text{h}^{-1}$	40	65
Ultimate partial pressure without gas ballast*	mbar	$< 2.5 \cdot 10^{-2}$	$< 2.5 \cdot 10^{-2}$
Ultimate total pressure with gas ballast*	mbar	$< 6.5 \cdot 10^{-1}$	$< 6.5 \cdot 10^{-1}$
Water vapour tolerance*	mbar	65	65
Connection ports	DN	40 KF	40 KF
Oil filling min./max.	l	2.3/3.7	2.5/3.3
Type of protection	IP	54	54

* as per DIN 28 400 and following numbers





PROVAC

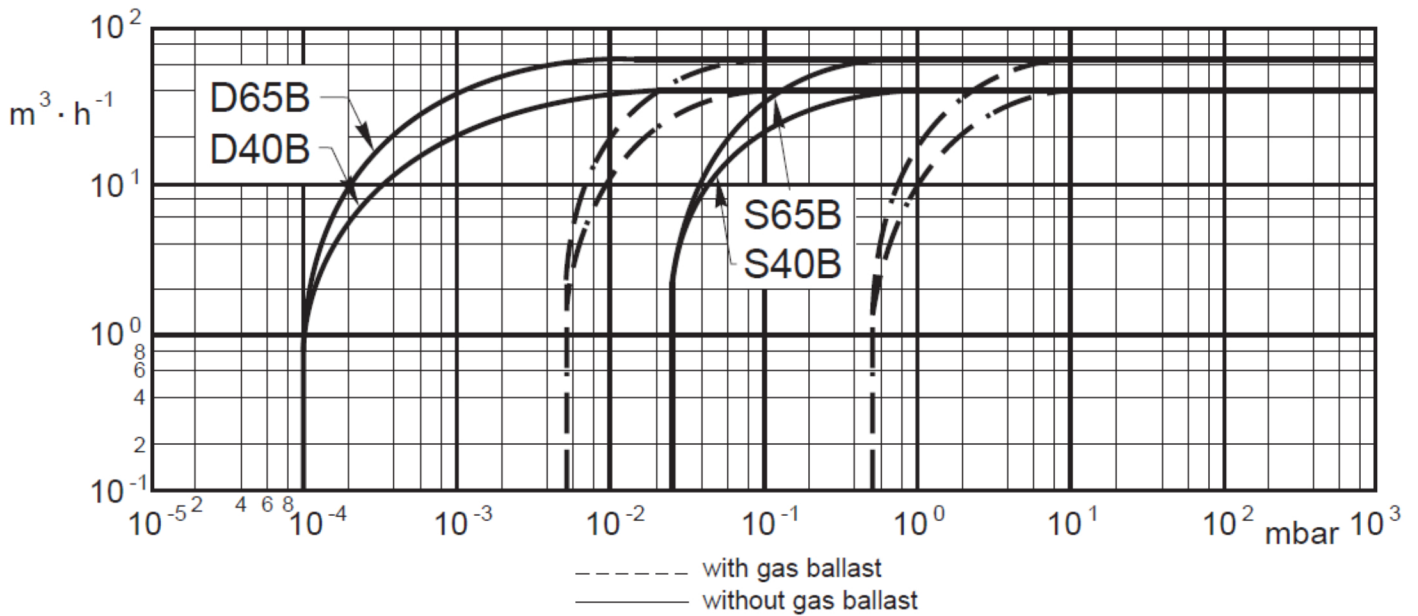
SALES

PHONE: 831-462-8900

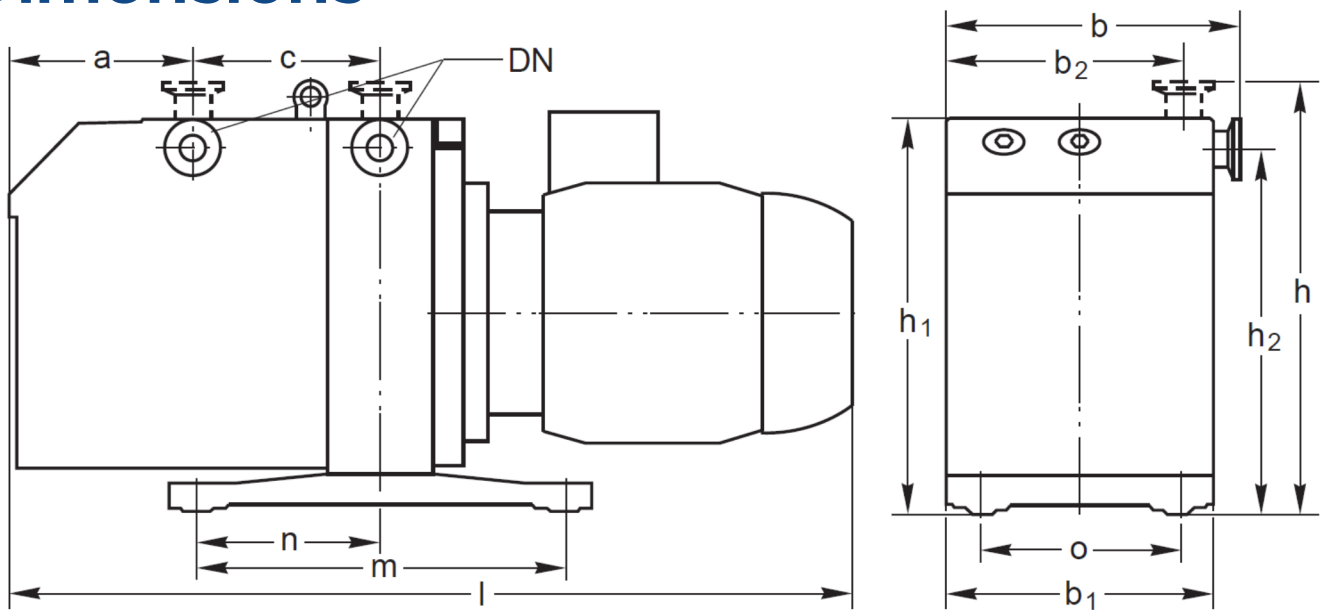
FAX: 831-462-3536

WWW.PROVAC.COM

Leybold S-40B, S-65B Pumping Curves



Dimensions



	DN	a	b	b ₁	b ₂	c	h	h ₁	h ₂	m	n	o
S/D 40 B, S 65 B	40 KF	135	254	234	206	166	355	336	308	382	191	190