



Edwards MF-100

Technical Specifications

Mass

MF30	1.3 kg
MF100/MF100AE	12 kg
MF300/MF300AE	28 kg

Filter material

MF30/MF100/MF300	Epoxy impregnated glass-fibre
MF100AE/MF300AE	Stainless steel mesh

Number of filter elements

MF30	1
MF100/MF100AE	2
MF300/MF300AE	4

Inlet and outlet ports

	Inlet	Outlet
MF30	NW25	NW25
MF100/MF100AE	NW25	1 inch BSP
MF300/MF300AE	ISO40	ISO40

Ambient temperature range (operation) 0 to 40 °C

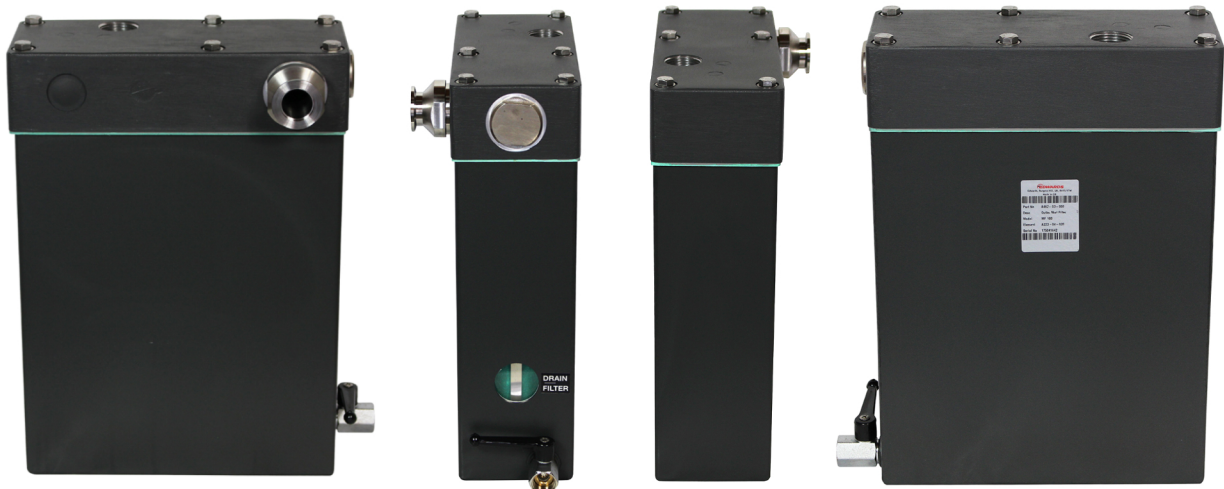
Ambient temperature range (storage) 0 to 40 °C

Relief pressure 0.35 bar, 3.5×10^4 Pa

For use with Edwards rotary pumps

MF30	E2M28
MF100/MF100AE	E1M40, E1M80, E2M40, E2M80 and Superpumps
MF300/MF300AE	E1M175, E1M275, E2M175, E2M275

Leak-tightness (MF100AE/MF300AE) 1×10^{-4} mbar.l.s⁻¹, 1×10^{-2} Pa.l.s⁻¹





PROVAC

SALES

PHONE: 831-462-8900

FAX: 831-462-3536

WWW.PROVAC.COM

Edwards MF-100 Dimensions

