



PROVAC

SALES

PHONE: 831-462-8900

FAX: 831-462-3536

WWW.PROVAC.COM

Leybold Leyvac LV 80, 140, 250

Technical Specifications

| | | LV 80 (C/CC) | LV 140 (C/CC) | LV 250 (C/CC) |
|---|--|---|---|---|
| Nominal pumping speed without gas ballast at 50/60 Hz | | | | |
| | m ³ x h ⁻¹ (cfm) | 80/96 (47.1/56.5) | 125/145 (73.6/85.3) | 250/300 (147.1/176.6) |
| Ultimate pressure with seal and rotor purge | mbar (Torr) | 1 x 10 ⁻² (0.75 x 10 ⁻²) | 1 x 10 ⁻² (0.75 x 10 ⁻²) | 1 x 10 ⁻² (0.75 x 10 ⁻²) |
| Power consumption at ultimate pressure and 50/60 Hz operation | kW (hp) | 2.9/3.2 (3.9/4.3) | 3.9/4.3 (5.2/5.8) | 4.2/4.7 (5.6/6.3) |
| Weight, approx. | | | | |
| LV ... | kg (lbs) | 280 (617) | 300 (661) | 330 (728) |
| LV ... C/CC | kg (lbs) | 300 (661) | 320 (705) | 350 (772) |
| Noise level ¹⁾ | dB(A) | < 65 | < 65 | < 72 |
| Connection flange | | | | |
| Intake | DN | 63 ISO-K | 63 ISO-K | 63 ISO-K |
| Discharge | DN | 40 ISO-KF | 40 ISO-KF | 40 ISO-KF |
| Mains voltage (± 10%) | | | | |
| LV ... | V | 200 - 460 | 200 - 460 | 200 - 460 |
| LV ... C (with housing) | V | 200 - 460 | 200 - 460 | 200 - 460 |
| LV ... CC (with housing and Temperature monitoring) | V | 380 - 460 | 380 - 460 | 380 - 460 |
| Nominal power at 50/60 Hz | kW (hp) | 4.1 (5.5) | 5.5 (7.4) | 8.0 (10.7) |
| Nominal current consumption 50/60 Hz at 400 V | A | 6 | 8 | 16 |
| Cooling | | water/glycol | water/glycol | water/glycol |
| Cooling water temperature | °C (°F) | +15 to +30 (+59 to +86) | +15 to +30 (+59 to +86) | +15 to +30 (+59 to +86) |
| Min. cooling water throughput | l/min | 3 | 3 | 3 |
| Water vapor tolerance (with gas ballast) | | | | |
| 80 slm 50/60 Hz | mbar (Torr) | 20/30 | 125/160 | -/- |
| 150 slm 50/60 Hz ²⁾ | mbar (Torr) | -/- | -/- | 30/37 |
| Water vapor capacity (with gas ballast) | | | | |
| 80 slm 50/60 Hz | kg/h | 1.24/2.3 | 11.5/18.0 | -/- |
| 150 slm 50/60 Hz ²⁾ | kg/h | -/- | -/- | 6.3/6.5 |
| Permissible ambient temperature | °C (°F) | +5 to +45 (+41 to +113) | +5 to +45 (+41 to +113) | +5 to +45 (+41 to +113) |
| Protection class EN 60529 | IP | 54 | 54 | 54 |
| Dimensions (W x H x D) | | | | |
| LV ... and LV ... C | mm | 814 x 375 x 550 | 895 x 400 x 567 | 1051 x 425 x 537 |
| | (in.) | (32.05 x 14.76 x 21.65) | (35.24 x 15.75 x 22.32) | (41.38 x 16.73 x 21.14) |
| LV ... CC | mm | 984 x 375 x 550 | 1065 x 400 x 567 | 1224 x 425 x 537 |
| | (in.) | (38.74 x 14.76 x 21.65) | (41.93 x 15.75 x 22.32) | (48.19 x 16.73 x 21.14) |

¹⁾ At ultimate pressure and with rigid exhaust line DIN EN ISO 2151

²⁾ 2nd case: with 24 V gas ballast kit 115005A13 fitted to port 2, standard purge also opened



PROVAC
SALES

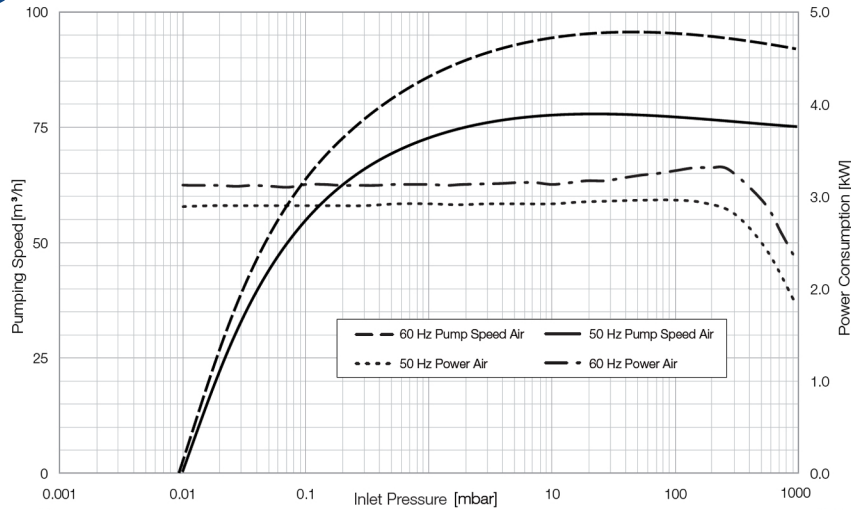
PHONE: 831-462-8900

FAX: 831-462-3536

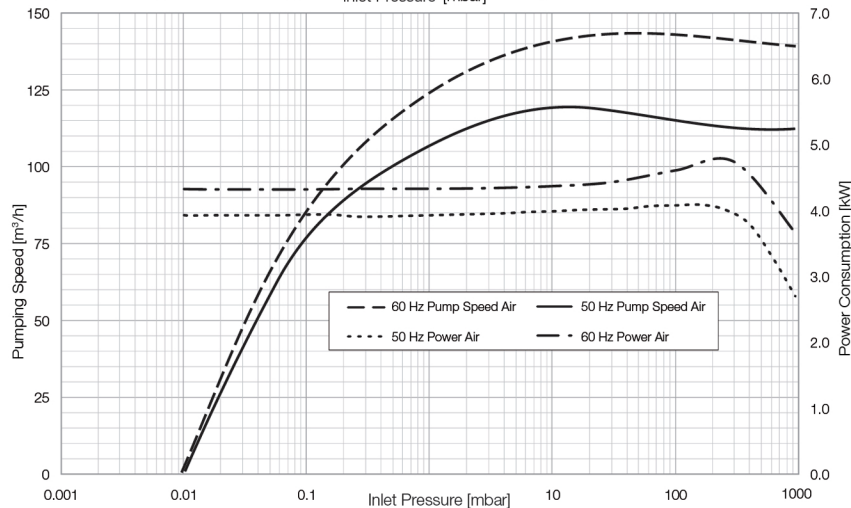
WWW.PROVAC.COM

Leybold Leyvac LV 80, 140, 250 Pumping Curves

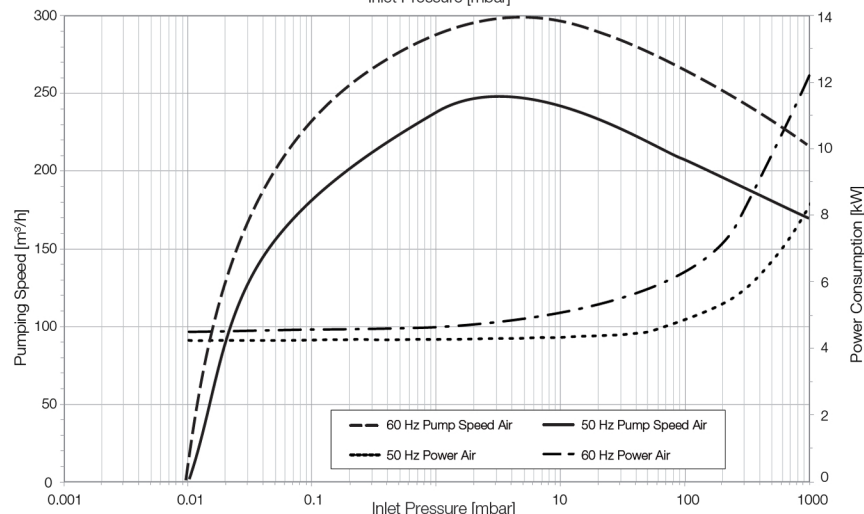
LV 80



LV 140



LV 250





PROVAC
SALES

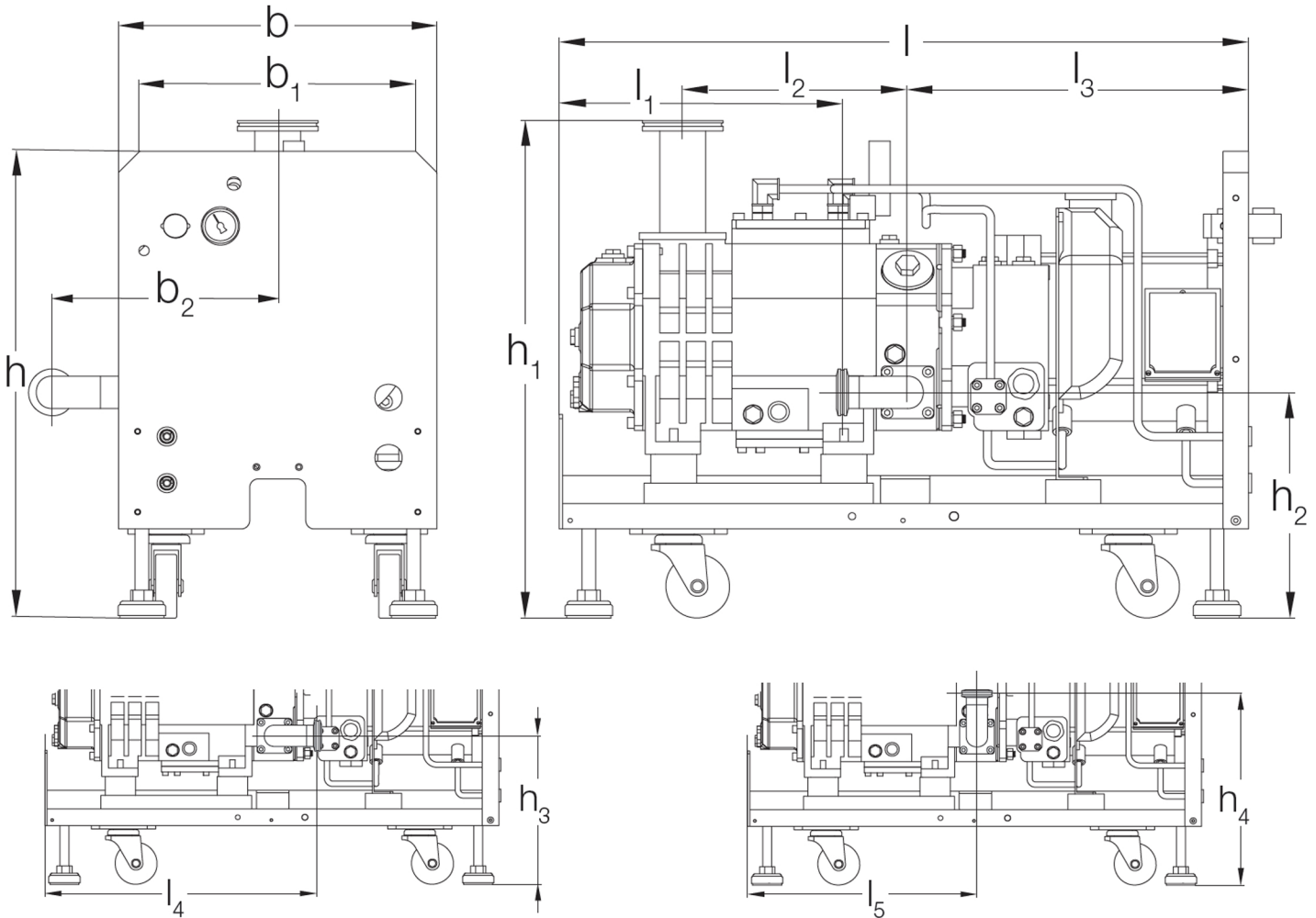
PHONE: 831-462-8900

FAX: 831-462-3536

WWW.PROVAC.COM

Leybold Leyvac LV 80, 140, 250

Dimensions



| Type | | b | b ₁ | b ₂ | h | h ₁ | h ₂ | h ₃ | h ₄ | h ₅ | I (CC version) | l ₁ | l ₂ | l ₃ | l ₄ | l ₅ |
|------------|-----|-------|----------------|----------------|-------|----------------|----------------|----------------|----------------|----------------|----------------|----------------|----------------|----------------|----------------|----------------|
| LV 80 (C) | mm | 375 | 320 | 266 | 550 | 576 | 266 | 266 | 341 | 191 | 814 (984) | 335 | 265 | 402 | 485 | 410 |
| | in. | 14.76 | 12.60 | 10.47 | 21.65 | 22.68 | 10.47 | 10.47 | 13.43 | 7.52 | 32.05 (38.74) | 13.19 | 10.43 | 15.83 | 19.09 | 16.14 |
| LV 140 (C) | mm | 400 | 350 | 285 | 567 | 597 | 257 | 257 | 332 | 182 | 895 (1065) | 364 | 297 | 453 | 514 | 439 |
| | in. | 15.75 | 13.78 | 11.22 | 22.32 | 23.50 | 10.12 | 10.12 | 13.07 | 7.17 | 35.24 (41.93) | 14.33 | 11.69 | 17.84 | 20.24 | 17.28 |
| LV 250 (C) | mm | 425 | 375 | 285 | 537 | 570 | 230 | 230 | 305 | 155 | 1051 (1224) | 512 | 420 | 464 | 662 | 587 |
| | in. | 16.73 | 14.76 | 11.22 | 21.14 | 22.44 | 9.06 | 9.06 | 12.01 | 6.01 | 41.38 (48.19) | 20.16 | 16.54 | 18.27 | 26.06 | 21.93 |



PROVAC

SALES

PHONE: 831-462-8900

FAX: 831-462-3536

WWW.PROVAC.COM

Leybold Leyvac LV 80, 140, 250

Features & Benefits

- high reliability & uptime
- tolerant to pressure shocks
- low noise & heat emission
- no contact of the process gases with oil
- hermetically tight - no shaft seals or oil leakage
- especially suited to meet special requirements of industrial processes & coating applications
- shortest pumpdown times through high pumping speed for air already starting at atmospheric pressure

Applications

- industrial furnaces • degassing • charging • casting • freeze drying
- packaging • CVD coating • plasma coating • glass coating • web coating • CVD/PECVD • crystal pulling & casting • regeneration of cryo pumps • forevacuum pumps for turbo pumps

