



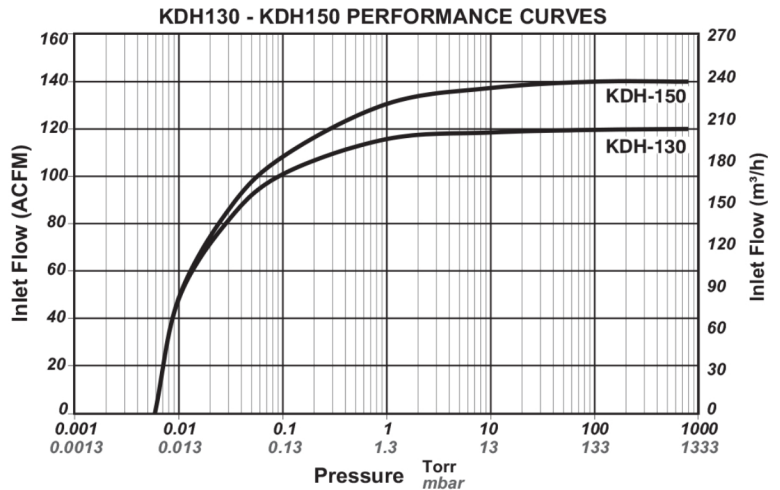
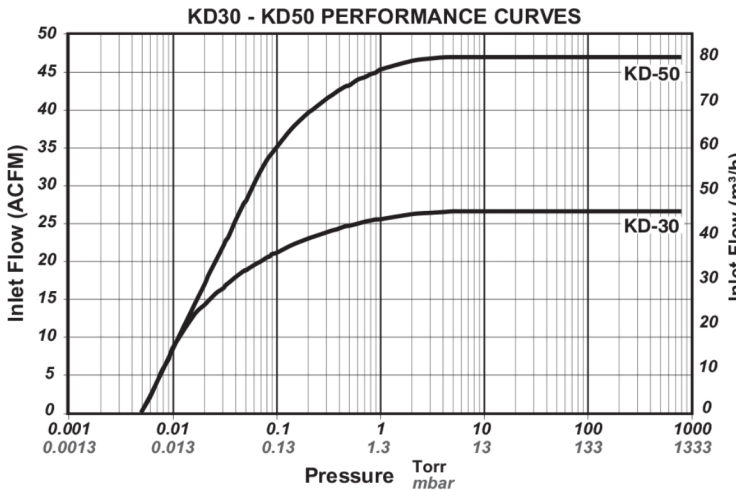
Kinney KD, KDH Series

Technical Specifications

MODEL	CAPACITY ACFM / m ³ /h	HP / kW	RPM	OIL CAPACITY GAL / Liter	WATER (80°F) GPM / L/min	GAS BALLAST FLOW (MAX) %	BLANK-OFF (5% GAS) Torr / mbar	ULTIMATE PRESSURE MICRONS / mbar
KD-30	33 / 56	1.5 / 1.11	571	1 / 3.78	Air-cooled	8%	1.5 / 2	10 / 0.013
KD-50	52 / 88	2 / 1.5	900	3 / 11.34		6%		
KDH-130	134 / 227	5 / 3.7	546	6 / 22.68	.75* / 3	1.0 / 1.3		
KDH-150	165 / 280	7.5 / 5.6	684		.75 / 3		5%	

* Air Cooling Optional

Pumping Curves





PROVAC

SALES

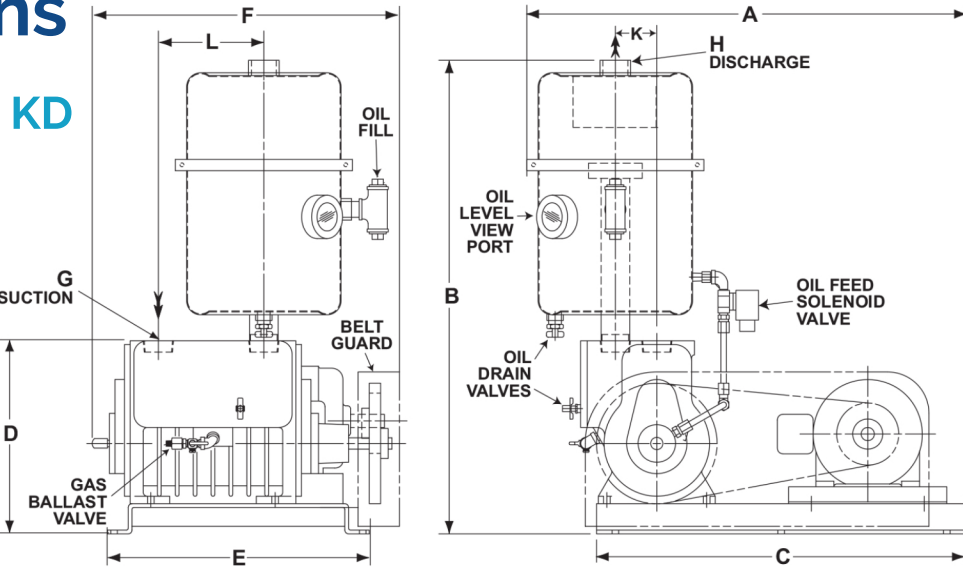
PHONE: 831-462-8900

FAX: 831-462-3536

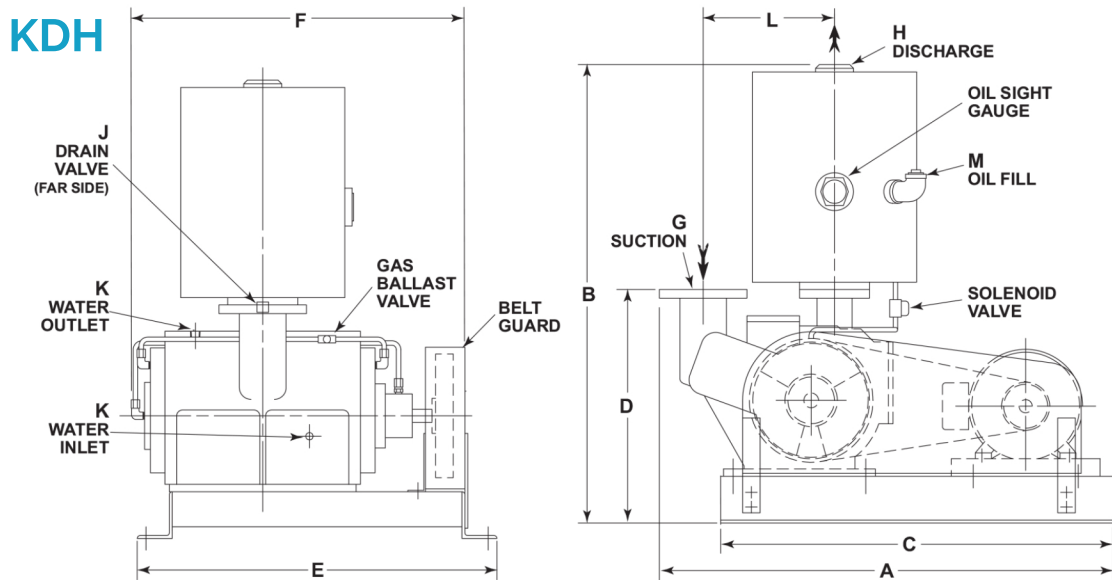
WWW.PROVAC.COM

Kinney KD, KDH Series

Dimensions



MODEL	A	B	C	D	E	F	G	H	K	L	WEIGHT LBS / kg
KD-30	27.75 705	29 737	24.50 622	12.81 325	17.38 441	20 508	1½" NPT	1¼" NPT	2.75 70	7.00 178	200 91
KD-50	29.13 740	31.50 800									230 104



MODEL	A	B	C	D	E	F	G	H	J	K	L	WEIGHT LBS / kg
KDH-130	38.88 987	29.25 997	33.63 854	20 508	30.81 783	28.68 719	3" FLG	2" NPT	½" NPT	¾" NPT	11.25 286	755 331
KDH-150												840 381



PROVAC

SALES

PHONE: 831-462-8900

FAX: 831-462-3536

WWW.PROVAC.COM

Kinney KD, KDH Series Features & Benefits

- absolute pressures down to the low micron range
- belt-driven, low speed rotary piston pump
- no small orifices to plug up
- rugged & reliable design
- no metal-to-metal contact between piston & cylinder
- adjustable gas ballast permits handling of condensable vapors
- KD series are air-cooled
- KDH series are water-cooled

Applications

- drying chambers • filling machinery • evacuation of process chambers
- degasifiers