



Pfeiffer HiPace 80

Technical Specifications

| HiPace® 80 with TC 110, DN 63 ISO-K | |
|--|---|
| Bearing | Hybrid |
| Compression ratio for Ar | $> 1 \cdot 10^{11}$ |
| Compression ratio for H ₂ | $1.4 \cdot 10^5$ |
| Compression ratio for He | $1.3 \cdot 10^7$ |
| Compression ratio for N ₂ | $> 1 \cdot 10^{11}$ |
| Cooling method, optional | Air/Water |
| Cooling method, standard | Convection |
| Cooling water flow | 75 l/h |
| Cooling water flow, max | 75 l/h |
| Cooling water flow, min | 75 l/h |
| Cooling water temperature | 5-25 °C 41-77 °F 278-298 K |
| Current max. | 4,6 A |
| Electronic drive unit | with TC 110 |
| Flange (in) | DN 63 ISO-K |
| Flange (out) | DN 16 ISO-KF/G ¼" |
| Fore-vacuum max. for N ₂ | 22 hPa 16.5 Torr 22 mbar |
| Gas throughput at full rotational speed for Ar | 0.54 hPa·l/s |
| Gas throughput at full rotational speed for H ₂ | 15.3 hPa·l/s |
| Gas throughput at full rotational speed for He | 2.7 hPa·l/s |
| Gas throughput at full rotational speed for N ₂ | 1.3 hPa·l/s |
| I/O interfaces | RS-485, Remote |
| Mounting orientation | Any |
| Operating voltage: V DC | 24 (± 5 %) V DC |
| Permissible radial magnetic field max. | 3.8 mT |
| Power consumption max. | 110 W |
| Protection category | IP54 |
| Pumping speed for Ar | 66 l/s |
| Pumping speed for H ₂ | 48 l/s |
| Pumping speed for He | 58 l/s |
| Pumping speed for N ₂ | 67 l/s |
| Rotation speed ± 2 % | 90,000 rpm 90,000 min ⁻¹ |
| Rotation speed variable | 50 – 100 % |
| Run-up time | 1.7 min |
| Sound pressure level | ≤48 dB(A) |
| Ultimate pressure according to PNEUROP | $< 1 \cdot 10^{-7}$ hPa $< 7.5 \cdot 10^{-8}$ Torr $< 1 \cdot 10^{-7}$ mbar |
| Ultimate pressure without gas ballast | $< 1 \cdot 10^{-7}$ hPa $< 7.5 \cdot 10^{-8}$ Torr $< 1 \cdot 10^{-7}$ mbar |
| Venting connection | G 1/8" |
| Weight | 2.4 kg 5.29 lb |



PROVAC

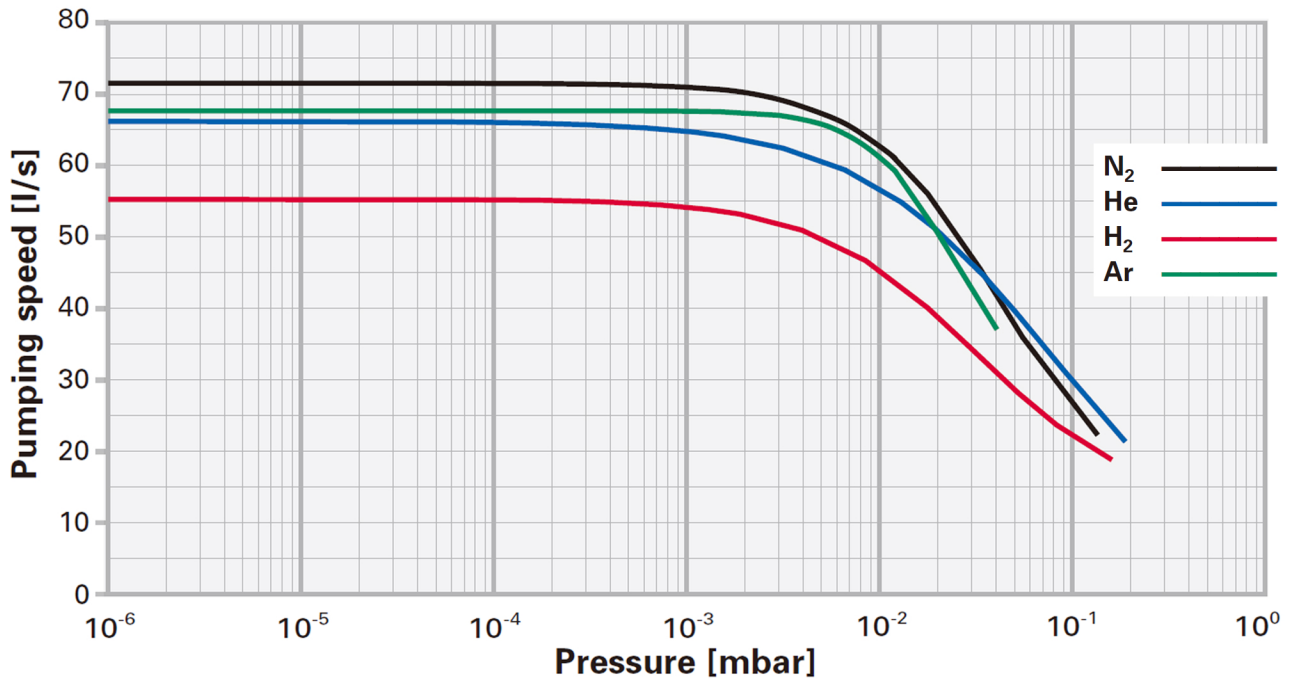
SALES

PHONE: 831-462-8900

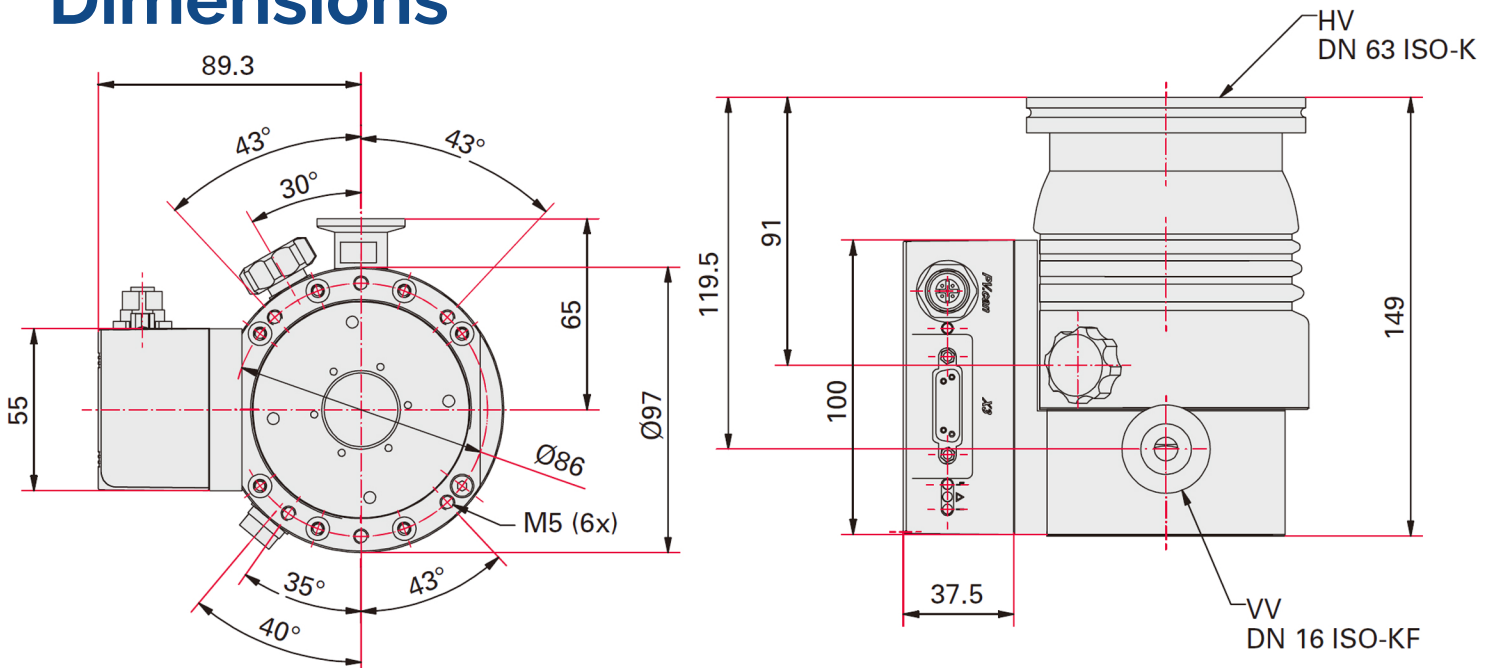
FAX: 831-462-3536

WWW.PROVAC.COM

Pfeiffer HiPace 80 Pumping Curves



Dimensions





PROVAC
SALES

PHONE: 831-462-8900

FAX: 831-462-3536

WWW.PROVAC.COM

Pfeiffer HiPace 80

Features & Benefits

- higher pumping speeds, backing pump capability & gas throughputs
- protected against particulate matter or oxidizing gases
- integrated drive electronics reduce need for cables
- proven bearing system, improved rotor design
- compact design makes for minimum footprint
- expanded remote & sensor functionalities
- installation in any orientation
- reduced run-up time
- on-site bearing changes
- quiet operation



Applications

- electron microscopy • leak detection • mass spectrometry • surface analysis • residual gas analysis • transfer chambers • load locks
- handling systems • medical technology • lamp & tube manufacturing
- nuclear research • plasma research • particle accelerators • cryo technology • nano technology • bio technology