



Edwards ESDP-12, ESDP-30

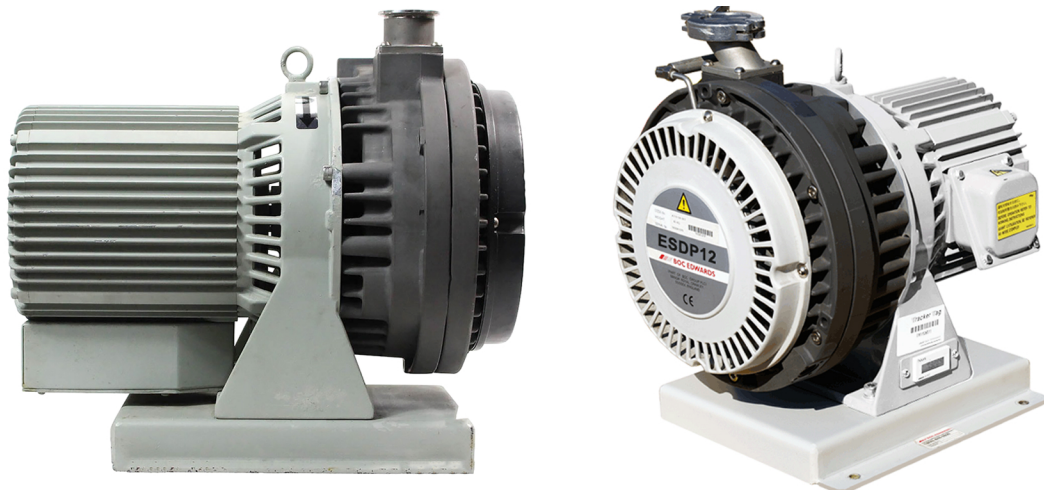
Technical Specifications

	ESDP12	ESDP30
Ambient operating temperature range	5 to 40°C	5 to 40°C
Ambient storage temperature range	-20 to 60°C	-20 to 60°C
Ultimate pressure	$<1.6 \times 10^{-2}$ mbar, 1.6 Pa	1×10^{-2} mbar, 1 Pa
Maximum inlet pressure	1000 mbar, 1×10^5 Pa, 0 psig	1000 mbar, 1×10^5 Pa, 0 psig
Maximum outlet pressure	1150 mbar, 1.15×10^5 Pa, 2 psig	1150 mbar, 1.15×10^5 Pa, 2 psig
Leak tightness	$<1 \times 10^{-4}$ mbar.l s^{-1} , 1×10^{-2} Pa.l s^{-1}	$<1 \times 10^{-4}$ mbar.l s^{-1} , 1×10^{-2} Pa.l s^{-1}
Displacement (swept volume)		
50 Hz	15 m 3 h $^{-1}$ (8.8 cfm)	30 m 3 h $^{-1}$ (17.6 cfm)
60 Hz	18 m 3 h $^{-1}$ (10.6 cfm)	36 m 3 h $^{-1}$ (21.2 cfm)
Pumping speed	See Figures 5 and 6	See Figures 7 and 8
Peak pumping speed		
50 Hz	12.5 m 3 h $^{-1}$ (7.3 cfm)	25 m 3 h $^{-1}$ (14.7 cfm)
60 Hz	15 m 3 h $^{-1}$ (8.8 cfm)	30 m 3 h $^{-1}$ (17.6 cfm)

* 3-phase pump

† 1-phase pump

	ESDP12	ESDP30
Mass	25 kg	40 kg*, 46 kg†
Inlet connection	NW25	NW40
Outlet connection	NW16	NW25





PROVAC

SALES

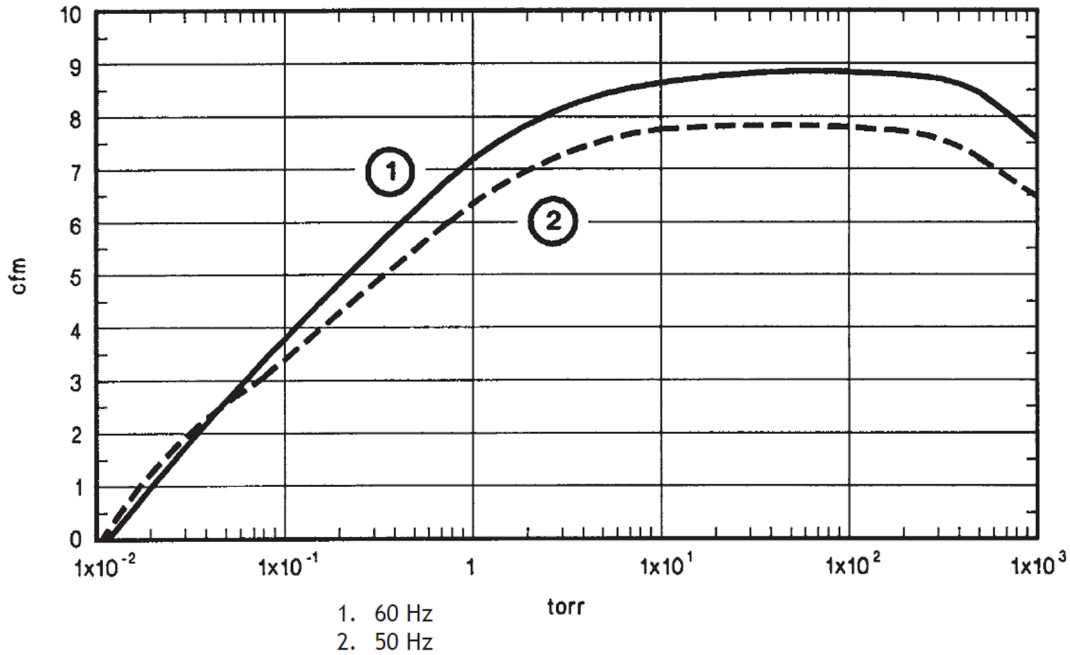
PHONE: 831-462-8900

FAX: 831-462-3536

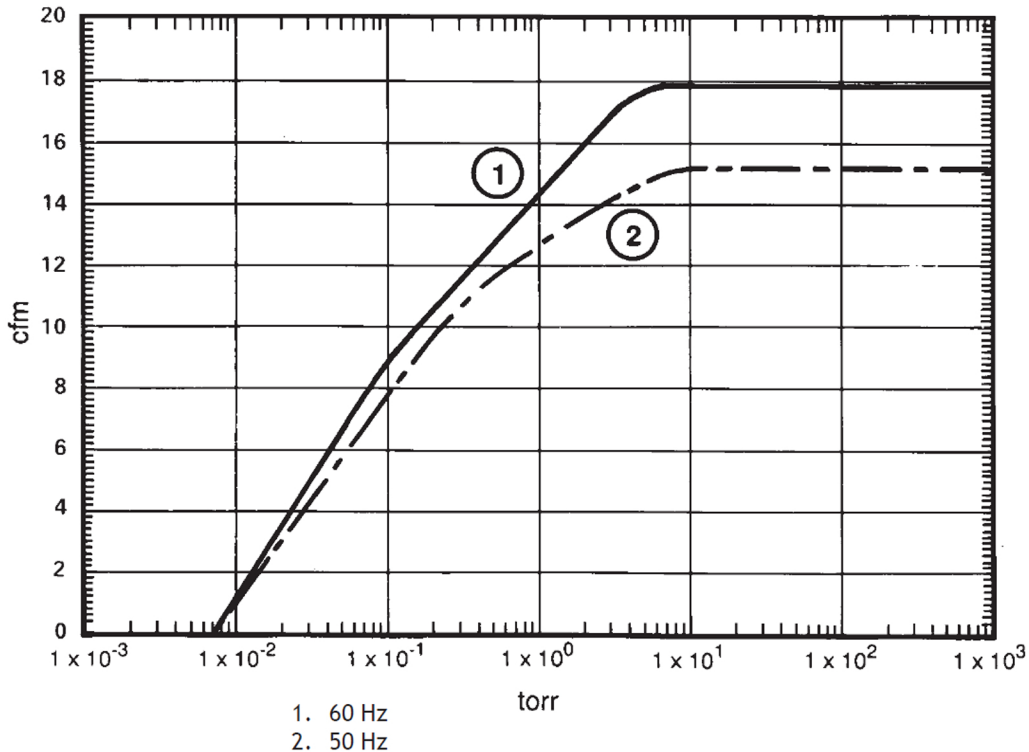
WWW.PROVAC.COM

Edwards ESDP-12, ESDP-30 Pumping Curves

ESDP-12



ESDP-30





PROVAC

SALES

PHONE: 831-462-8900

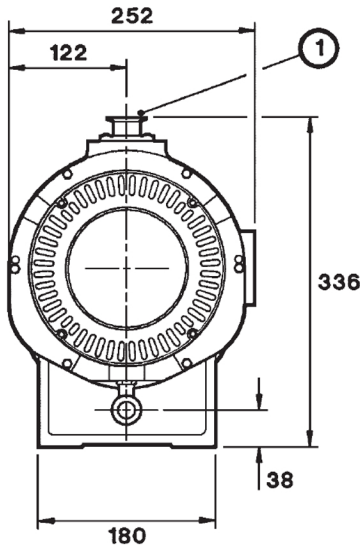
FAX: 831-462-3536

WWW.PROVAC.COM

Edwards ESDP-12, ESDP-30

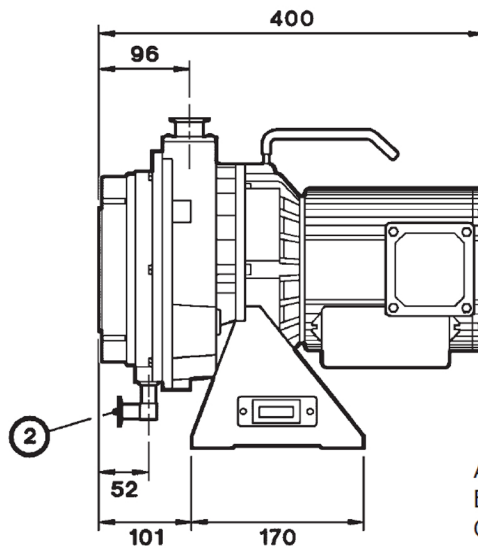
Dimensions

(A)

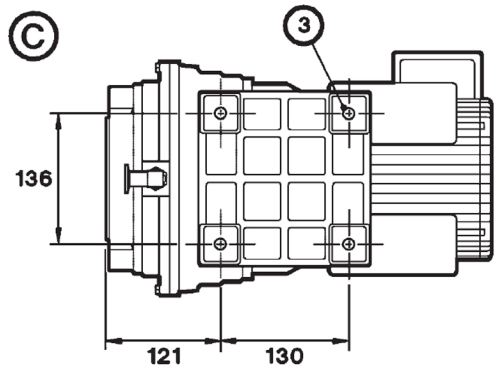


(B)

ESDP-12



(C)



A. Front view

B. Side view

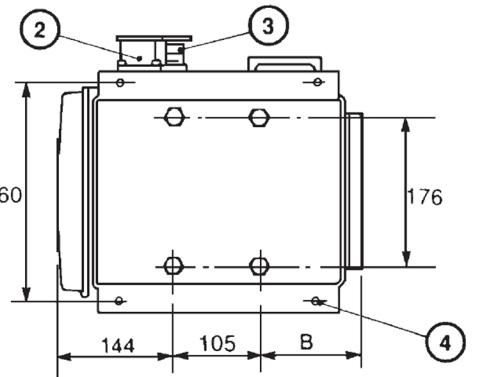
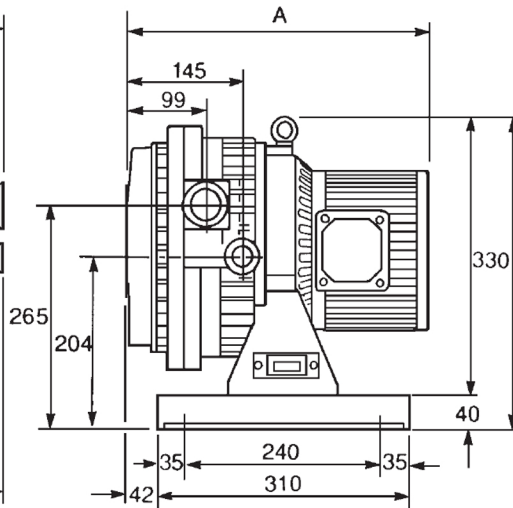
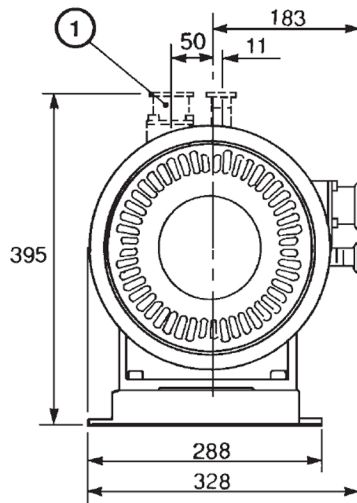
C. View of base

1. Inlet

2. Outlet

3. Mounting-holes: $\varnothing 11$ (4 off)

ESDP-30



1. Alternative inlet and outlet positions

2. Inlet

3. Outlet

4. Mounting-holes for M8 bolts (4 off)

Pump	A	B
1-phase	443	194
3-phase	372	123



PROVAC

SALES

PHONE: 831-462-8900

FAX: 831-462-3536

WWW.PROVAC.COM

Edwards ESDP-12, ESDP-30

Features & Benefits

- economical & inexpensive to operate
- offers high performance
- high pumping speed, low ultimate pressure
- compact design, very light
- little routine maintenance
- no oil changes, filters, or foreline traps to replace
- excellent alternative to oil sealed vane pumps

Applications

- scanning electron microscopes • ion implanters • general clean pump applications • sputtering • turbo pump backing • ideal for chamber roughing • gel drying • rotary evaporation • centrifugal concentration
- vacuum ovens • glove boxes • rare gas recirculation