



PROVAC

SALES

PHONE: 831-462-8900

FAX: 831-462-3536

WWW.PROVAC.COM

Edwards E1M175, E1M275, E2M175, E2M275 Technical Specifications

		E1M175	E2M175	E1M275	E2M275
Maximum Displacement	(m ³ h ⁻¹)				
50 Hz electrical supply		178	178	292	292
60 Hz electrical supply		214	214	350	350
Maximum Speed - Pneurop	(m ³ h ⁻¹)				
50 Hz electrical supply		160	160	255	255
60 Hz electrical supply		196	196	306	306
Motor rotational speed	r.min ⁻¹				
50 Hz electrical supply		1,440	1,440	1,440	1,440
60 Hz electrical supply		1,720	1,720	1,720	1,720
Ultimate vacuum					
without gas-ballast (partial pressure)	mbar (Pa)	5 x 10 ⁻² (5)	10 ⁻⁴ (10 ⁻²)	5 x 10 ⁻² (5)	10 ⁻⁴ (10 ⁻²)
without gas-ballast (total pressure)	mbar (Pa)	5 x 10 ⁻² (5)	1 x 10 ⁻³ (1 x 10 ⁻¹)	5 x 10 ⁻² (5)	1 x 10 ⁻³ (1 x 10 ⁻¹)
with full gas-ballast (partial pressure)	mbar (Pa)	4 x 10 ⁻¹ (4 x 10 ¹)	5 x 10 ⁻³ (5 x 10 ⁻¹)	4 x 10 ⁻¹ (4 x 10 ¹)	5 x 10 ⁻³ (5 x 10 ⁻¹)
Maximum permitted outlet pressure (at full pump throughput)	bar gauge (Pa)	0.5 (1.5 x 10 ⁵)	0.5 (1.5 x 10 ⁵)	0.5 (1.5 x 10 ⁵)	0.5 (1.5 x 10 ⁵)
Maximum water vapour inlet pressure					
without thermostatic water flow valve	mbar (Pa)	50 (5 x 10 ³)	4 (4 x 10 ²)	50 (5 x 10 ³)	2 (2 x 10 ²)
with thermostatic water flow valve	mbar (Pa)		20 (2 x 10 ³)		12 (12 x 10 ²)
Maximum water vapour pumping rate	kg h ⁻¹	5.8	2.4	9.2	2.5
Maximum gas-ballast flow	m ³ h ⁻¹	12	3	18	3



PROVAC

SALES

PHONE: 831-462-8900

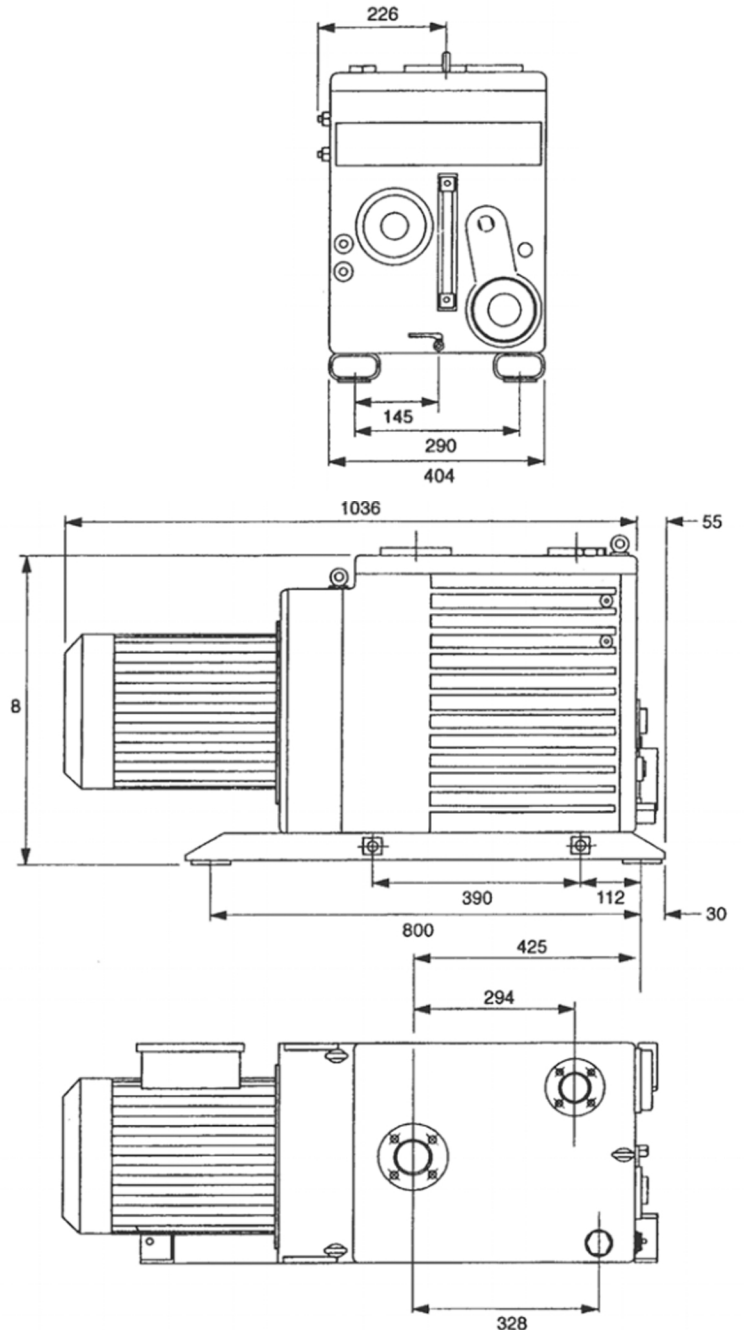
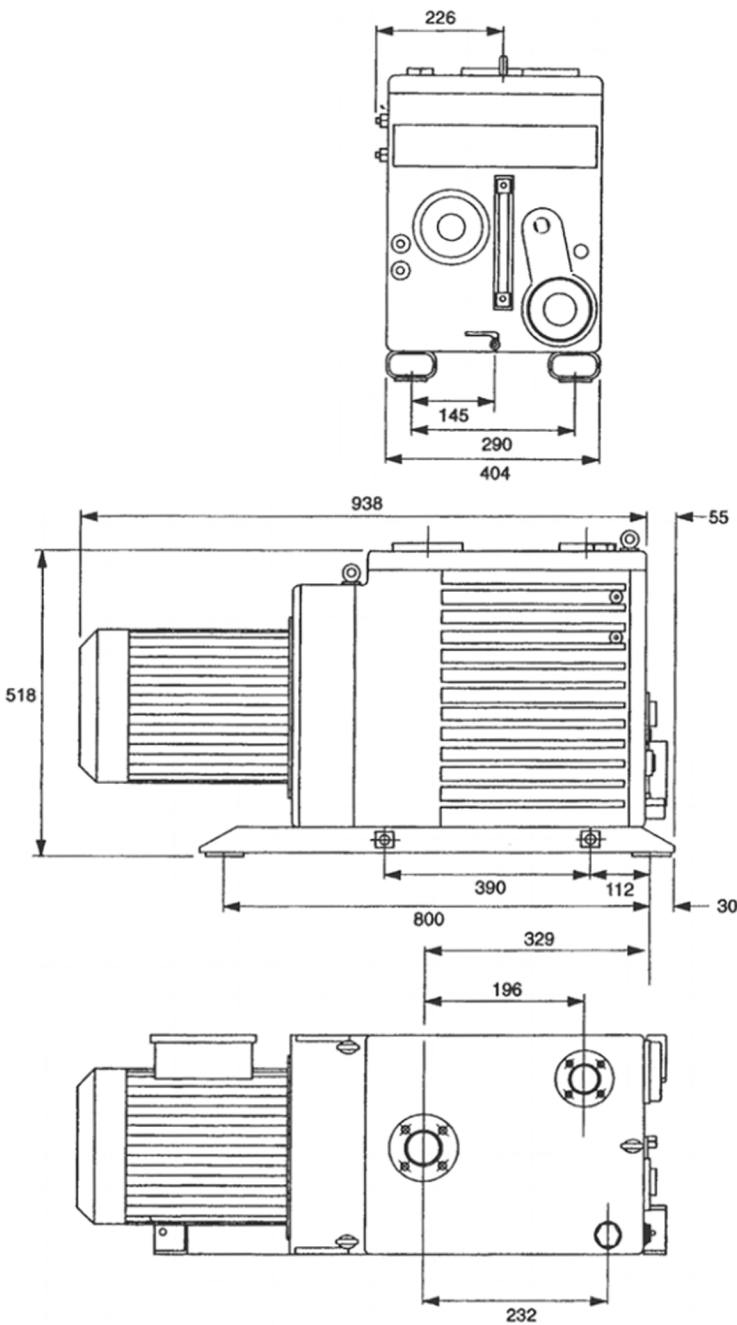
FAX: 831-462-3536

WWW.PROVAC.COM

Edwards E1M175, E1M275, E2M175, E2M275 Dimensions

E1M175, E2M175

E1M275, E2M275





PROVAC

SALES

PHONE: 831-462-8900

FAX: 831-462-3536

WWW.PROVAC.COM

Edwards E1M175, E1M275, E2M175, E2M275

Features & Benefits

- totally enclosed fan-cooled motors
- advanced lubrication circuits
- low noise, vibration free



Applications

- refrigeration dehydration • brake line evacuation • thin film coating
- vacuum distillation • freeze drying • space simulation • chemical

