



PROVAC

SALES

PHONE: 831-462-8900

FAX: 831-462-3536

WWW.PROVAC.COM

Leybold D-2.5E

Technical Specifications

		TRIVAC D 2,5 E	
		50 Hz	60 Hz
Nominal pumping speed ¹⁾	m ³ /h (cfm)	3.2 (1.9)	3.6 (2.1)
Pumping speed ¹⁾	m ³ /h (cfm)	2.7 (1.6)	3.3 (1.9)
Ultimate partial pressure without gas ballast	mbar (Torr)	$\leq 5 \times 10^{-4}$ ($\leq 3.8 \times 10^{-4}$)	$\leq 5 \times 10^{-4}$ ($\leq 3.8 \times 10^{-4}$)
Ultimate total pressure without gas ballast ²⁾	mbar (Torr)	$\leq 2 \times 10^{-3}$ ($\leq 1.5 \times 10^{-3}$)	$\leq 2 \times 10^{-3}$ ($\leq 1.5 \times 10^{-3}$)
Ultimate total pressure with gas ballast Step 2 ²⁾	mbar (Torr)	$\leq 3 \times 10^{-2}$ ($\leq 2.3 \times 10^{-2}$)	$\leq 3 \times 10^{-2}$ ($\leq 2.3 \times 10^{-2}$)
Water vapor tolerance			
Step 1	mbar (Torr)	10 (7.5)	10 (7.5)
Step 2	mbar (Torr)	20 (15)	20 (15)
Step 3	mbar (Torr)	30 (22.5)	30 (22.5)
Water vapor capacity			
Step 1	g/h	20	20
Step 2	g/h	40	40
Step 3	g/h	60	60
Oil filling, max. / min.	l (qt)	0.7 / 0.4 (0.7 / 0.4)	0.7 / 0.4 (0.7 / 0.4)
Noise level	dB(A)	≤ 47	≤ 47
Admissible ambient temperature	°C (°F)	+10 to +50 (+50 to +122) (EURO motor) / +10 to +40 (+50 to +104) (US/Japan motor)	+10 to +50 (+50 to +122) (EURO motor) / +10 to +40 (+50 to +104) (US/Japan motor)
Motor rating 50/60 Hz	W (HP)	250 (0.34)	300 (0.41)
Nominal speed 50/60 Hz	rpm	1400	1600
Type of protection	IP	54	54
Weight (with oil filling)	kg (lbs)	15.3 (33.7)	15.3 (33.7)
Dimensions (W x H x D)	mm (in.)	127 x 225 x 383 (5 x 8.86 x 15)	127 x 225 x 383 (5 x 8.86 x 15)
Connections (Intake and Exhaust)	DN	16 KF	16 KF

¹⁾ To DIN 28 426 T1²⁾ To DIN 28 400 and following numbers



PROVAC

SALES

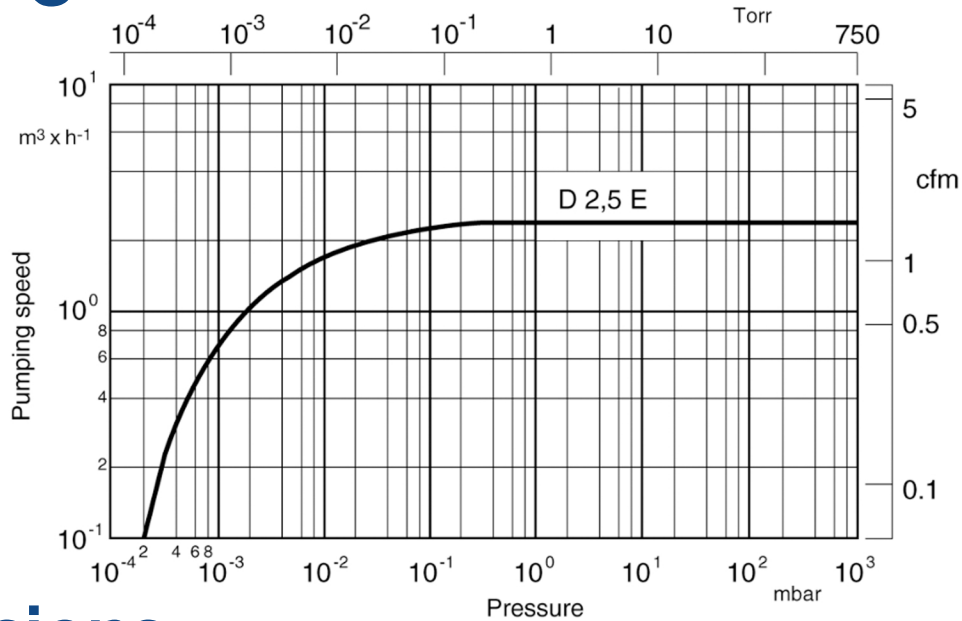
PHONE: 831-462-8900

FAX: 831-462-3536

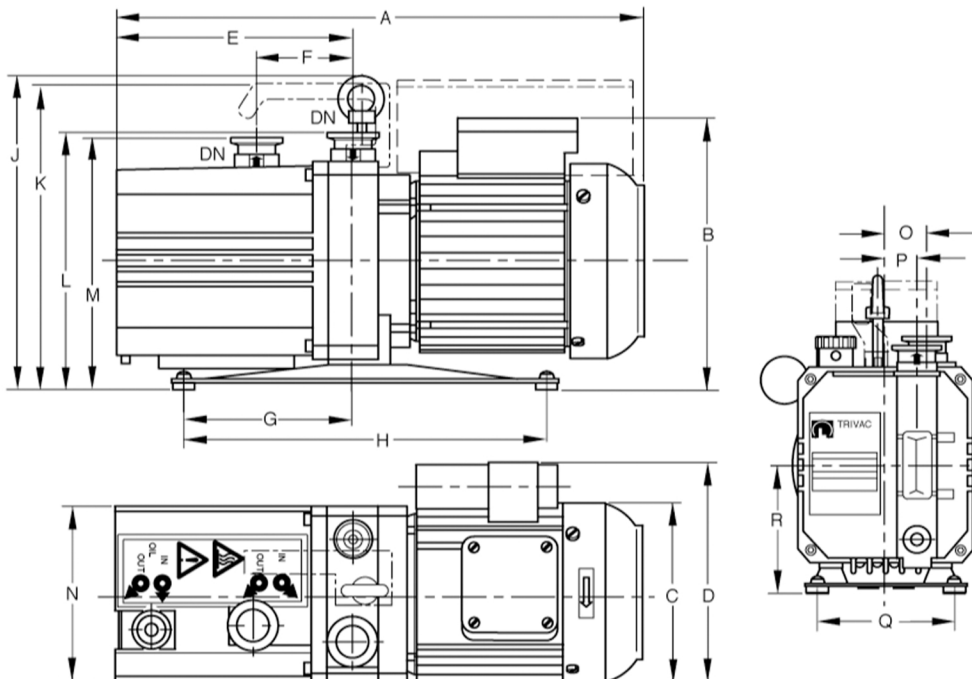
WWW.PROVAC.COM

Leybold D-2.5E

Pumping Curves



Dimensions



	A	B	C	D	E	F	G	H	J	K	L	M	N	O	P	Q	R	DN
mm	388.5	210.5	127	148.5	162.5	75.5	119.5	225	231.5	225	182	177	113	27	15	83	84.5	16 KF
in.	15.3	8.29	5	5.85	6.4	2.97	4.7	8.86	9.9	8.86	7.16	6.97	4.45	1.06	.59	3.27	3.33	16 KF

PROVAC SALES, INC. 3131 SOQUEL DRIVE, SOQUEL CA 95073



PROVAC
SALES

PHONE: 831-462-8900

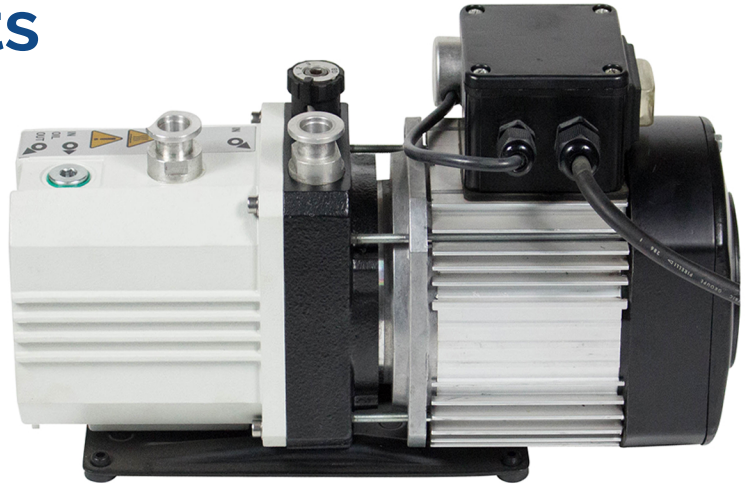
FAX: 831-462-3536

WWW.PROVAC.COM

Leybold D-2.5E

Features & Benefits

- highly reliable
- small & compact
- quiet operation
- free of yellow metals
- low power consumption
- environmentally compatible
- high water vapor tolerance
- simplified customizing ability
- compliance with international standards
- process quality (low backstreaming of oil)
- motors for all standard supply voltages & frequencies
- safe & intelligent vacuum protection (hermetically sealed)
- suitable for continuous operation at 1000 mbar (750 torr)
- better individual performance given by 3 stage gas ballast device



Applications

- mass & x-ray spectrometers • leak detectors • electron beam microscopes • sterilizers • freeze-drying systems • chemical & research labs • general vacuum engineering • backing pump for high vacuum pump systems