



# PROVAC

## SALES

PHONE: 831-462-8900

FAX: 831-462-3536

WWW.PROVAC.COM

# Kinney CB 2415, 4015, 4030

## Technical Specifications

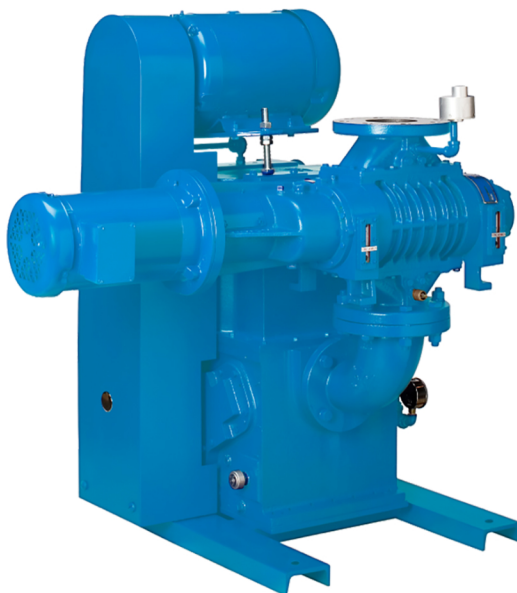
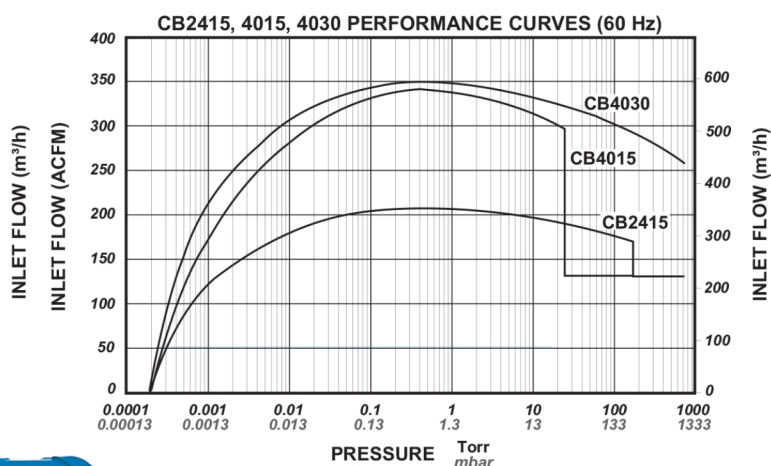
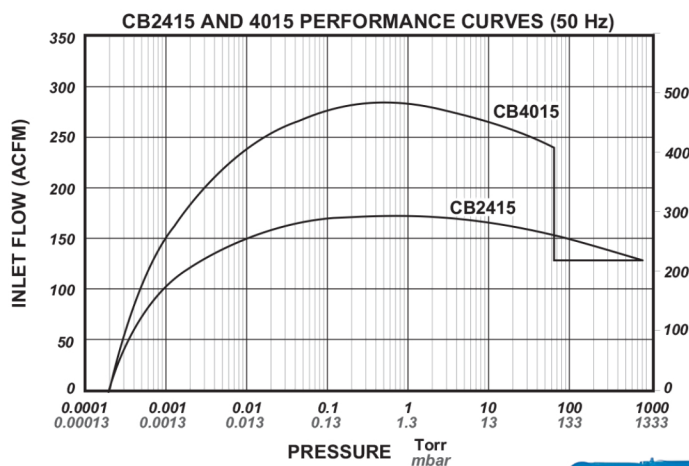
SYSTEM MODEL	Hz	CIP <sup>1</sup> (TORR)	MAXIMUM COP <sup>2</sup> (TORR)	BOOSTER MODEL	DISPLACEMENT CFM / <i>m³/h</i>	HP/ <i>kW</i>	PUMP MODEL	DISPLACEMENT CFM / <i>m³/h</i>	HP/ <i>kW</i>
CB2415	60	180	*	KMBD-240C	240 / <i>400</i>	3 / <i>2.2</i>	KT-150	150 / <i>250</i>	7.5 / <i>5.6</i>
	50	760	*						
CB4015	60	25	25	KMBD-400C	400 / <i>680</i>	3 / <i>2.2</i>	KT-150	150 / <i>250</i>	7.5 / <i>5.6</i>
	50	50	50						
CB4030	60	760	760	KMBD-400C	400 / <i>680</i>	5 / <i>3.7</i>	KT-300	300 / <i>500</i>	15 / <i>11</i>
	50	760	760						

<sup>1</sup> CIP = Cut-in Pressure

<sup>2</sup> COP = Continuous Operating Pressure

\*Limited by motor HP

## Pumping Curves





# PROVAC

## SALES

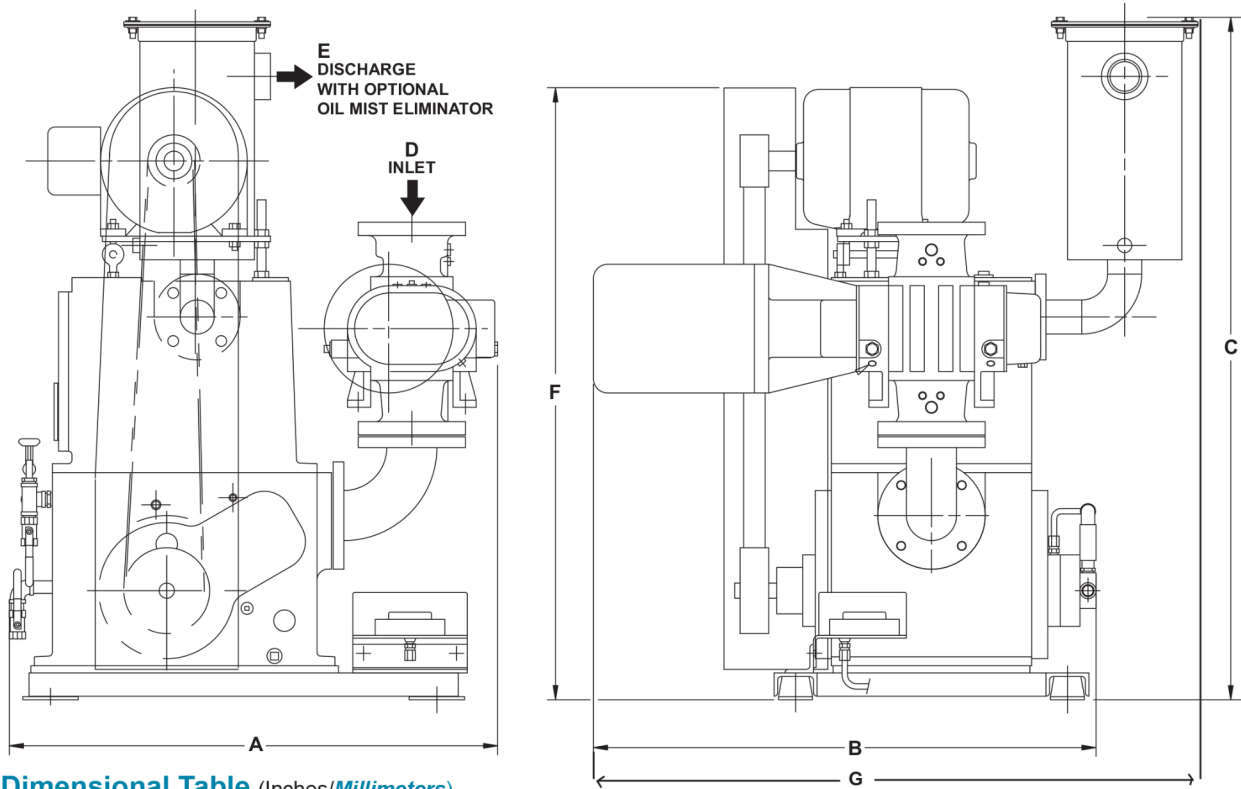
PHONE: 831-462-8900

FAX: 831-462-3536

WWW.PROVAC.COM

# Kinney CB 2415, 4015, 4030

## Dimensions



**Dimensional Table** (Inches/Millimeters)

MODEL	A	B	C	D INLET	E DISCHARGE	F	G
CB2415	36 / <b>914</b>	35 / <b>889</b>	49 / <b>1245</b>	3" FLG	2" NPT	44 / <b>1118</b>	42 / <b>1067</b>
CB4015	36 / <b>914</b>	39 / <b>991</b>	48 / <b>1219</b>	4" FLG	2" NPT	44 / <b>1118</b>	48 / <b>1279</b>
CB4030	39 / <b>991</b>	42 / <b>1067</b>	57 / <b>1448</b>	4" FLG	3" NPT	52 / <b>1321</b>	50 / <b>1270</b>

## Features & Benefits

- high pumping capacity
- quiet, vibration-free operation
- water-cooled for low operating temperatures
- compact, tough, durable

## Applications

- vacuum packaging • vacuum furnaces • vacuum coating • sputtering
- space simulation