



Pfeiffer ADH Series

Technical Specifications

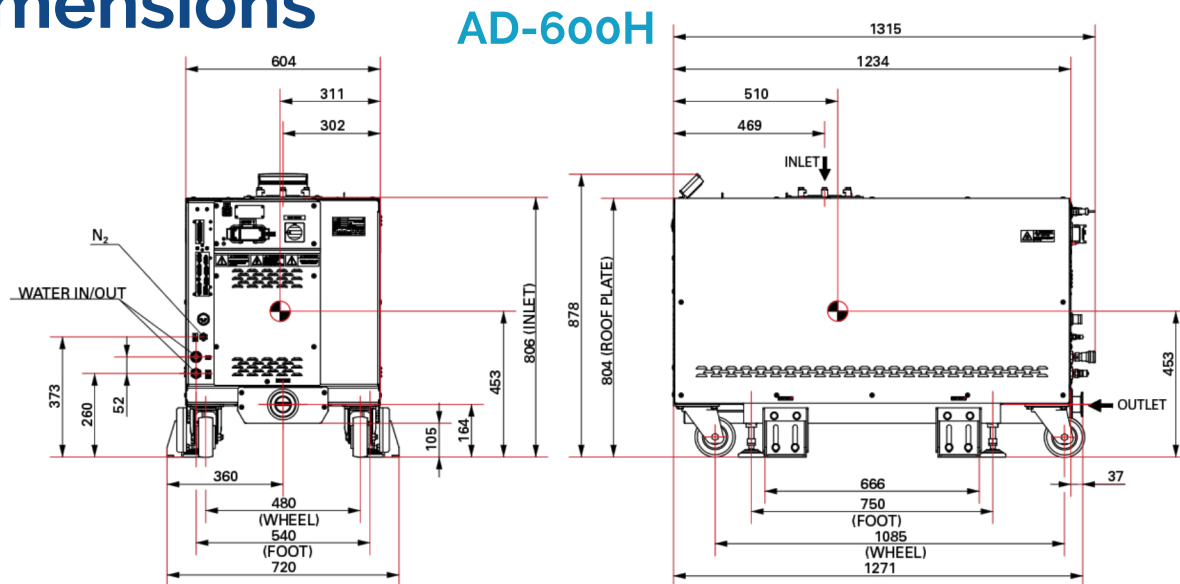
Pump type	AD 600 H	AD 3060 H	AD 4560 H
Peak pumping speed – N ₂	600 m ³ /h	3,300 m ³ /h	4,500 m ³ /h
Peak pumping speed – H ₂	550 m ³ /h	3,200 m ³ /h	4,500 m ³ /h
Maximum continuous inlet flow – N ₂	500 slm	160 slm	110 slm
Maximum continuous inlet flow – H ₂	400 slm	200 slm	120 slm
Maximum volume to be evacuated	50 m ³	45 m ³	40 m ³
Maximum ultimate pressure (50 slm N ₂ purge)	2 · 10 ⁻² hPa	2 · 10 ⁻³ hPa	2 · 10 ⁻³ hPa
Power consumption at ultimate pressure	5.5 kW	6.4 kW	6.5 kW
Max noise level at ultimate pressure and at maximum flow rate	65 dBA	67 dBA	67 dBA
Power supply, 3 phases, 50/60 Hz ¹⁾	200 – 230 V 380 – 480 V	200 – 230 V 380 – 450 V	200 – 230 V 380 – 480 V
Max. exhaust overpressure	1,200 hPa	1,200 hPa	1,200 hPa
Min. cooling water flow rate for max. continuous inlet flow pump specification	8 l/min	9 l/min	9 l/min
Cooling water temperature	10 – 25 °C ²⁾	10 – 25 °C ²⁾	10 – 25 °C ²⁾
N ₂ purge flow range	10 to 120 slm	10 to 120 slm	10 to 120 slm
Oil fluid capacity	2.3 l	3.25 l	3.7 l
Dimensions (L x W x H)	1,234 x 604 x 806 mm	1,234 x 604 x 1,194 mm	1,234 x 604 x 1,194 mm
Weight	830 kg	1,190 kg	1,360 kg
Inlet connection	DN 100 ISO-K	DN 160 ISO-K	DN 200 ISO-K
Exhaust connection	DN 50 ISO-KF	DN 50 ISO-KF	DN 50 ISO-KF

¹⁾ According to CE certification, pumps can handle 10% variations

²⁾ Test done until 35 °C: regulation temperature at high pressure is 70 °C min at flow rate up to 100 slm

All the values are given for 50 and 60 Hz power supply.

Dimensions





PROVAC

SALES

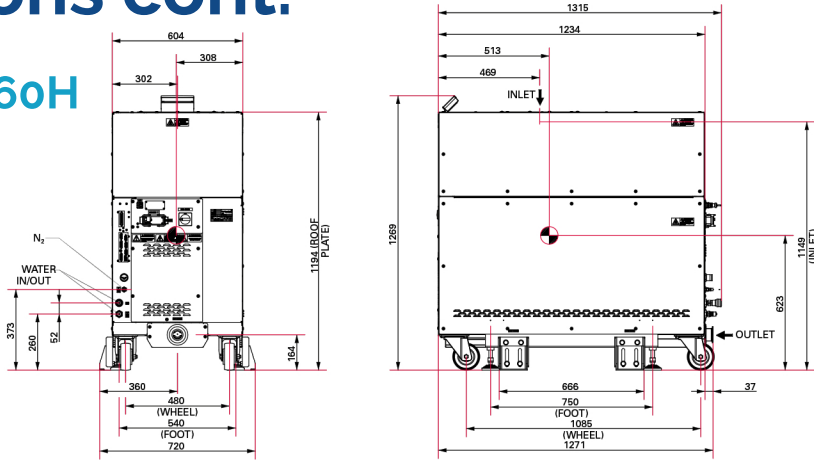
PHONE: 831-462-8900

FAX: 831-462-3536

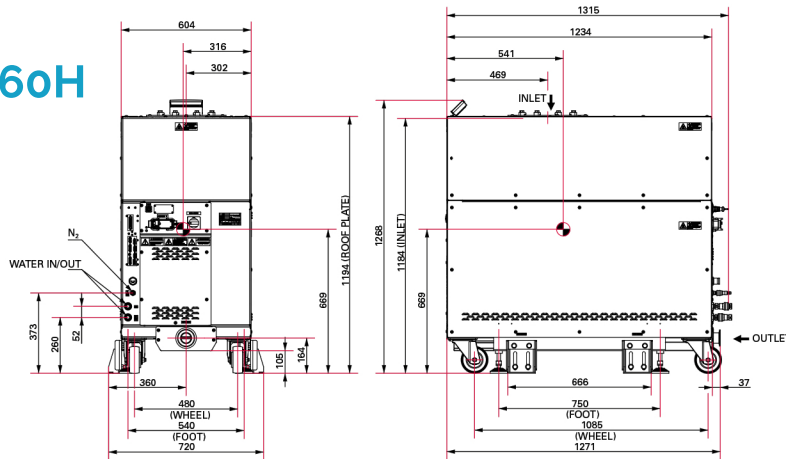
WWW.PROVAC.COM

Pfeiffer ADH Series Dimensions cont.

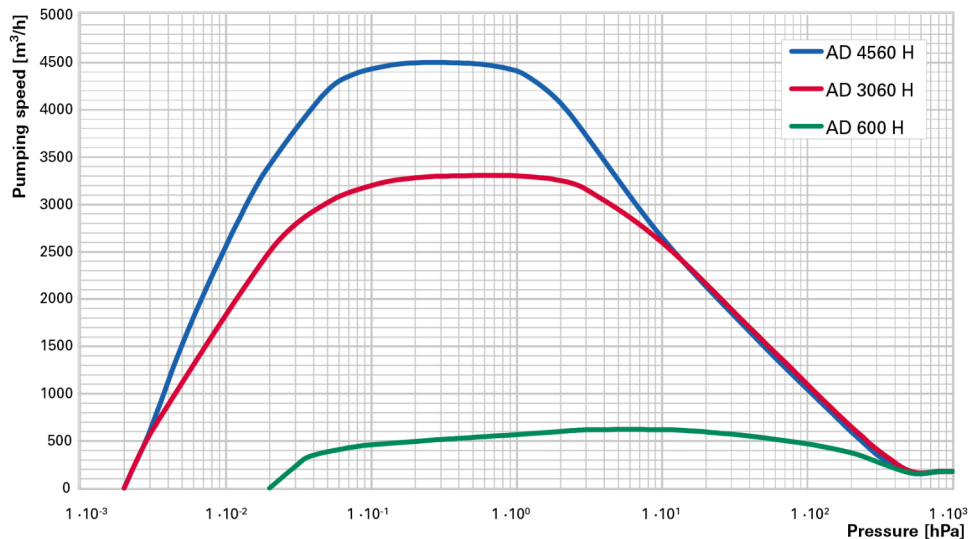
AD-3060H



AD-4560H



Pumping Curves





PROVAC

SALES

PHONE: 831-462-8900

FAX: 831-462-3536

WWW.PROVAC.COM

Pfeiffer ADH Series Features & Benefits

- long maintenance intervals
- lubricated bearings
- high resistance to process by-products
- low operating costs
- large flow rate tolerance
- best power consumption
- high powder transfer capacity
- enhanced safety due to static & dynamic internal stress resistance

Applications

- semiconductor • solar cells • LED • flat panel display

