



Alcatel 5150, 5150CP

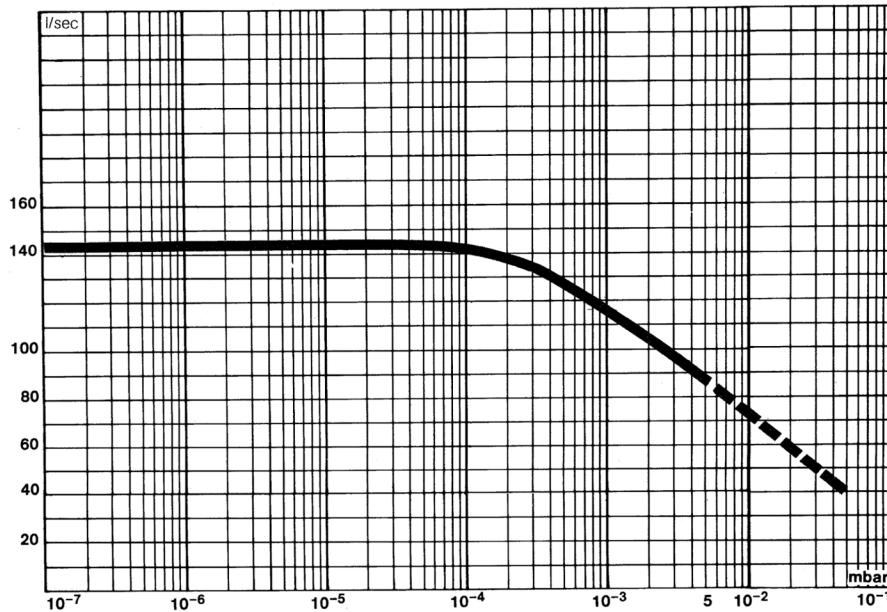
Technical Specifications

			5150 PNEUROP
Pumping speed for $P < 10^{-4}$ mbar	N ₂	l/sec	140
	He		100
	H ₂		80
Ultimate pressure*	water	mbar	5.10^{-9}
	air		5.10^{-8}
Nominal continuous inlet pressure (N ₂)**	water	mbar	3.10^{-2}
	air		3.10^{-3}
Nominal continuous exhaust pressure	water	mbar	1.10^{-1}
	air		1.10^{-2}
Compression ratio	N ₂		7.10^8
	He		12,000
	H ₂		1000
Starting time		min	2
Rotational speed		rpm	27,000
Recommended fore pump			2004 A
Maximum ambient temperature	water	°C	50
	air		35
Cooling water flowrate*** (20 °C, 3 bars)		l/min	0.5 - 0.8
Weight	Water-cooled model		6.4
	Air-cooled model	kg	6.6
	Power supply		6.5
Maximum bake-out temperature (flange)		°C	100
Power requirements	115-220-240 V / 50-60 Hz (single phase)		
Length of power cord		m	2.5
Maximum length of power cord****		m	50
Power consumption		V.A	300
Connecting flanges	Inlet		NW 100
	Exhaust		NW 25

			5150 CP
Pumping speed $P \leq 10^{-4}$ mbar	N ₂	l/s	140
Pumping speed $P = 10^{-2}$ mbar	N ₂	l/s	89
Ultimate pressure	with purge	mbar	1.10^{-7}
	without purge	mbar	1.10^{-8}
Maximum inlet pressure	N ₂	mbar	5.10^{-1}
Maximum exhaust pressure	N ₂	mbar	1
Compression ratio	N ₂		7.10^8
	He		12,000
	H ₂		1000
Starting time		mn	2
Rotational speed		rpm	27,000
Maximum ambient temperature		°C	50
Cooling			water
Cooling water flowrate (20 °C, 3 bars)		l/mn	0.5-0.8
Nitrogen purge flowrate at atm. pressure		SCCM	50
Power requirements	115-220-240 V/50-60 Hz (single phase)		
Power consumption		V.A.	300
Power cord (standard length)		m	2.5
Maximum distance between pump and power supply		m	50
Weight	Pump	kg	6.5
	Power supply	kg	6.5
Connection flanges	Inlet	NW	100
	Exhaust	NW	25
	Nitrogen purge	NW	16
Recommended forepump			2033



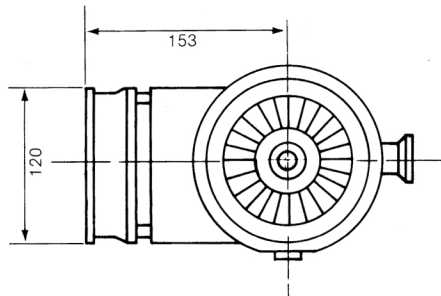
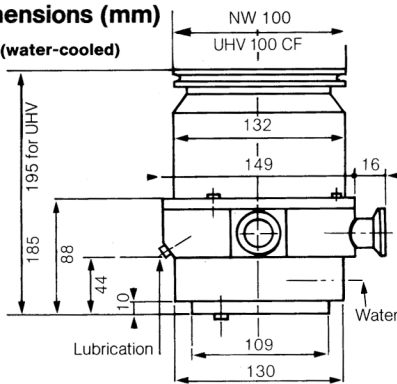
Alcatel 5150, 5150CP Pumping Curves



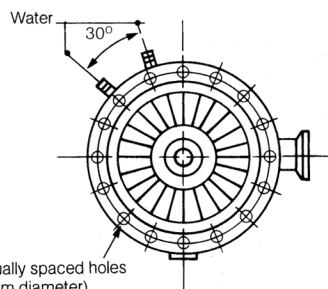
Dimensions

Dimensions (mm)

5150 (water-cooled)

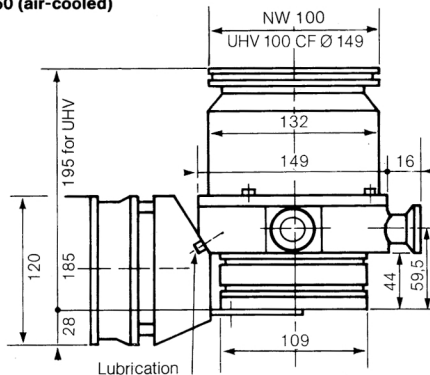


UHV 100 CF



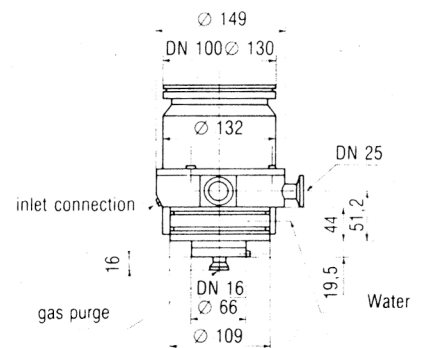
16 equally spaced holes (8.6 mm diameter) on 130 mm diameter circle.

5150 (air-cooled)

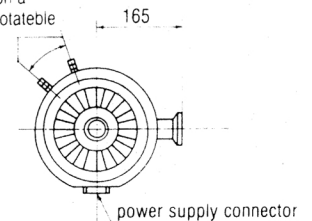


Dimensions (mm)

5150 CP (water-cooled), AIR



Fittings for 6 × 8 mm plastic tubing on a cooling collar rotatable through 360°





PROVAC

SALES

PHONE: 831-462-8900

FAX: 831-462-3536

WWW.PROVAC.COM

Alcatel 5150, 5150CP

Features & Benefits

- compact design - easy installed in restricted spaces
- operates in any position
- air or water cooled
- simplified maintenance
- 2 minute start up time
- low rotational speed improves reliability

Applications

- mass spectrometry • gas analyzers • research & development
- electronic microscope

